

## AREA TABLE:

TAX LOT	EXISTING TRACT SIZE	ADJUSTED TRACT SIZE
1600	1.79 ACRES, ±	2.73 ACRES, ±
1601	2.57 ACRES, ±	1.63 ACRES, ±

\*AREA DOES NOT INCLUDE RIGHT OF WAY

# PROPERTY LINE ADJUSTMENT SURVEY for FAITH BIBLE CHURCH

## LOCATION:

A TRACT OF LAND LOCATED IN THE NORTHWEST QUARTER OF THE SOUTHEAST QUARTER OF SECTION 35, TOWNSHIP 3 NORTH, RANGE 10 EAST, WILLAMETTE MERIDIAN, THE CITY OF HOOD RIVER IN HOOD RIVER COUNTY, OREGON.

HOOD RIVER COUNTY  
SURVEYOR'S OFFICE

CS# 2025 012

DATE FILED: 3/10/2025

BY: BA

OWNER:  
FAITH BIBLE CHURCHSITE ADDRESS:  
1889 BELMONT DRIVE  
HOOD RIVER, OR 97031ZONING:  
CITY OF HOOD RIVER  
R-2  
STANDARD DENSITY  
RESIDENTIAL

BELMONT DRIVE (60' RIGHT OF WAY)

SOUTH LINE OF THE  
JENKINS DLC NO.38NORTHEAST CORNER OF INST  
#691623 PER C.S.2007118.

N 88°34'14" W 459.26' (DEED BOOK L, PAGE 299 = 462')

N 88°34'14" W 287.04' (DEED BOOK 80, PAGE 278 = 287')

BRASS CAP FOUND  
MONUMENTING THE  
SOUTHEAST CORNER  
WILLIAM JENKINS  
DLC No. 38

(C.S.83011=47.17')

(C.S.2008074=20.33')  
(DEED=20.23')

N 87°28'18" W 133.25'

(C.S.2007118=24.00')

N 87°18'47" W 90.27'

(C.S.2007118=25.98')

(C.S.2007118=205.16')

(C.S.2007118=205.16')

(C.S.2007118=205.16')

ORIGINAL LINE FOR PROPERTY LINE  
ADJUSTMENT, C.S.2008074, BEING  
2.5 FEET WEST OF EXISTING  
BOUNDARY.PARCEL 2 PARTITION PLAT  
201608PTAX LOT  
1802

CHURCH

ADJUSTED  
TAX LOT 1601  
PLA INST#2025-00354  
CONTAINS 70,832 SQ.FT.  
1.63 ACRES  
3N-10E-35DBNOTE: RECORD DISTANCES IN ( )  
REPRESENT SOLAR VILLAGE PUD.SOLAR VILLAGE PLANNED UNIT  
DEVELOPMENT

TAX LOT 1500

TAX LOT 1500

TAX LOT 1500

TAX LOT 1500

TAX LOT 1500

TAX LOT 1500

TAX LOT 1500

TAX LOT 1500

TAX LOT 1500

TAX LOT 1500

TAX LOT 1500

TAX LOT 1500

TAX LOT 1500

TAX LOT 1500

TAX LOT 1500

TAX LOT 1500

TAX LOT 1500

TAX LOT 1500

TAX LOT 1500

TAX LOT 1500

TAX LOT 1500

TAX LOT 1500

TAX LOT 1500

TAX LOT 1500

TAX LOT 1500

TAX LOT 1500

TAX LOT 1500

TAX LOT 1500

TAX LOT 1500

TAX LOT 1500

TAX LOT 1500

TAX LOT 1500

TAX LOT 1500

TAX LOT 1500

TAX LOT 1500

TAX LOT 1500

TAX LOT 1500

TAX LOT 1500

TAX LOT 1500

TAX LOT 1500

TAX LOT 1500

TAX LOT 1500

TAX LOT 1500

TAX LOT 1500

TAX LOT 1500

TAX LOT 1500

TAX LOT 1500

TAX LOT 1500

TAX LOT 1500

TAX LOT 1500

TAX LOT 1500

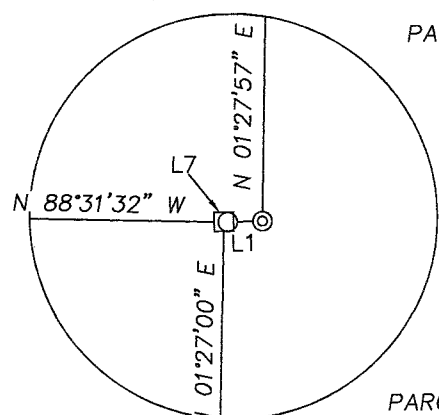
TAX LOT 1500

TAX LOT 1500

TAX LOT 1500



SCALE: 1" = 50'

BASIS OF BEARING:  
OREGON STATE PLANE - NORTH ZONE (3601)  
GRID BEARINGS AND INTERNATIONAL FEETDETAIL B  
NOT TO SCALEPARCEL 1 OF PARTITION  
PLAT NO. 201608PTAX LOT  
1801PARCEL 3 OF PARTITION  
PLAT NO. 201001PTAX LOT  
1803FOUND 5/8" IRON RODS,  
L.S.1815 (C.S.83041)

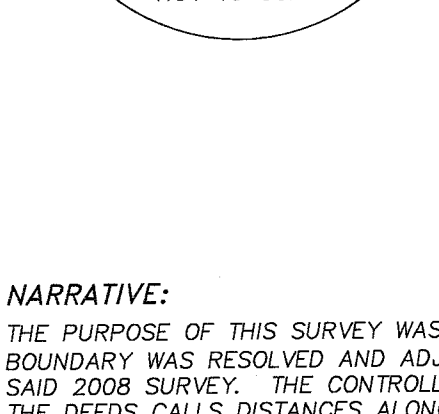
ADJUSTED BOUNDARY LINE

N 88°20'09" W 172.55'

SEE DETAIL B

ORIGINAL BOUNDARY LINE

SEE DETAIL C

DETAIL C  
NOT TO SCALESTORM WATER RETENTION  
TAX LOT 1802

TAX LOT 1802

TAX LOT 1802

TAX LOT 1802

TAX LOT 1802

TAX LOT 1802

TAX LOT 1802

TAX LOT 1802

TAX LOT 1802

TAX LOT 1802

TAX LOT 1802

TAX LOT 1802

TAX LOT 1802

TAX LOT 1802

TAX LOT 1802

TAX LOT 1802

TAX LOT 1802

TAX LOT 1802

TAX LOT 1802

TAX LOT 1802

TAX LOT 1802

TAX LOT 1802

TAX LOT 1802

TAX LOT 1802

TAX LOT 1802

TAX LOT 1802

TAX LOT 1802

TAX LOT 1802

TAX LOT 1802

TAX LOT 1802

## NARRATIVE:

THE PURPOSE OF THIS SURVEY WAS TO ADJUST AND MONUMENT THE BOUNDARY LINES OF TAX LOT 1600 (INST#2024-01809) AND TAX LOT 1601 (INST#2024-1810). THIS BOUNDARY WAS RESOLVED AND ADJUSTED IN 2008 BY CROSS, L.S.60051 (C.S.2008074). WE RECOVERED THE MAJORITY OF THE CONTROLLING MONUMENTS RECOVERED ON SAID 2008 SURVEY. THE CONTROLLING MONUMENTS FOR THE NORTH LINE OF THE SUBJECT ARE BASED ON THE SOUTH LINE OF THE WILLIAM JENKINS DLC NO.28, WHICH THE DEEDS CALLS DISTANCES ALONG SAID DLC LINE TO THE SUBJECT. WE TIED A BRASS CAP MONUMENTING THE SOUTHERLY SOUTHEAST CORNER OF SAID DLC LINE. THE DIRECTION OF THIS LINE WAS CONTROLLED BY A DISTANCE CALL FROM A 5/8" IRON ROD, L.S.60051 AT THE NORTHWEST CORNER OF TAX LOT 1601, THIS LINE WAS VERIFIED BY MONUMENTS WITH DISTANCE CALL-OUTS AT THE NORTHEAST CORNER OF SUBJECT. THE WEST LINE WAS ALSO MONUMENTED BY SAID 2008 SURVEY, WE RECOVERED AND HELD SAID MONUMENTS. THE SOUTH LINE OF TAX LOT 1601 WAS RESOLVED BY HOLDING MONUMENTS RECOVERED, WHICH WE HELD AS THE NORTH LINE OF DEED TO MCCORMICK, BOOK 80, PAGE 278. AT THE SOUTHWEST CORNER OF TAX LOT 1601, WE HELD THE DISTANCE FROM A 5/8" IRON ROD, L.S.1815 TO THE CALCULATED CORNER BASED ON THE REFERENCE DISTANCE CALLED FROM C.S.2008074. THE SOUTHEAST CORNER OF SAID TAX LOT 1601 WE RECOVERED A 1/2" IRON ROD, L.S.1028 (C.S.83011). THE DEED CALLS FROM SAID 1/2" IRON ROD, NORTH 660 FEET TO THE POINT OF BEGINNING, THE NORTH 295.75 FEET ADJOINING THE SOLAR VILLAGE PUD QUITCLAIMED 5 FEET TO THE CHURCH PROPERTY, MONUMENTS SET ON THE WEST LINE OF SAID PUD WERE TIED AS SHOWN. TAX LOT 1600 WAS SURVEYED AND MONUMENTED BY CRON, L.S.1028 (C.S.83011). WE RECOVERED AND HELD 1/2" IRON RODS FROM THAT SURVEY AT THE SOUTHWEST AND NORTHEAST CORNERS, THE NORTHWEST CORNER WAS NOT RECOVERED, THE CALCULATED POSITION LANDED ON A RECENT FENCE CORNER POST, POSITION WAS BASED ON HOLDING A PROJECTION SOUTHERLY FROM MONUMENTS RECOVERED ON THE PUD. THE SOUTHEAST CORNER WAS BY HOLDING SURVEY DISTANCE FROM THE WEST AND NORTH AS SURVEYED BY C.S.83011, MATCHING DEED. WE RECOVERED A 1" IRON PIPE (C.S.789), WHICH WE USED AS REFERENCE MONUMENT TO CORNER. THE EAST LINE OF TAX LOT 1600 IS CONTROLLED BY THE WEST RIGHT OF WAY OF AVALON DRIVE AS DESCRIBED ON INST#60029. THE BASIS OF BEARING IS 5/8" IRON RODS ON THE WEST LINE OF TAX LOT 1601.

## LEGEND:

- SET 5/8" X 30" IRON ROD WITH CAP, L.S. 72306 (2/4/2025)
- FOUND MONUMENT OF RECORD, AS NOTED
- ⊗ FOUND 5/8" IRON ROD, L.S. 60051 (C.S. No. 2010-017)
- ⊗ FOUND 3/4" SURVEY NAIL, L.S. 59002 (C.S. No. 2007-118)
- △ FOUND AND HELD 1/2" IRON ROD, L.S.1028, (C.S. No. 83011)
- ⊗ FOUND 5/8" IRON ROD, L.S. 60051 (C.S. No. 2008-074)
- CALCULATED CORNER
- ( ) REFERENCE DOCUMENT AND DIMENSIONS.

## REFERENCES: FILED WITH THE HOOD RIVER COUNTY SURVEYORS OFFICE.

- C.S. NO. 789, SURVEY FOR MCCORMICK BY FREY P.E.2319, DATED: NOVEMBER 1964.
- C.S. NO. 1145, SURVEY FOR BELL BY TENNESON, L.S.183, FILED: APRIL 29, 1969.
- C.S. NO. 1983009, TOPOGRAPHIC SURVEY FOR BAPTIST CHURCH BY TENNESON L.S.183, FILED: APRIL 29 1983.
- C.S. NO. 1983011, BOUNDARY SURVEY BY CRON, L.S. 1028, FILED: APRIL 29, 1983.
- C.S. NO. 1983013, SURVEY FOR WILCOX BY CRON, L.S. 1028, FILED: APRIL 29, 1983.
- C.S. NO. 1983041, SURVEY FOR HENDERSON BY TERRA, L.S. 1815, FILED: AUGUST 4, 1983.
- C.S. NO. 2002035, PLAT OF HAZELVIEW'S SECOND ADD. BY TERRA, L.S.1815, FILED: JUNE 10, 2002.
- C.S. NO. 2007093, PLAT OF MOUNTAIN VIEW CONDOMINIUM FOR AVALON PROJECT, LLC BY TENNESON, L.S.2786, FILED: SEPT 12, 2007.
- C.S. NO. 2007118, PLAT OF SOLAR VILLAGE PUD FOR SOLAR VILLAGE LLC BY KLEIN AND ASSOC., L.S.59002, FILED: NOV 30, 2007.
- C.S. NO. 2008074, BOUNDARY LINE ADJUSTMENT BY COLUMBIA RIVER SURVEYING AND MAPPING, L.S.60051, FILED: SEPTEMBER 24, 2008.
- C.S. NO. 2010017, PARTITION PLAT NO.201001P FOR BALDWIN BY COLUMBIA RIVER SURVEYING AND MAPPING, L.S.60051, APRIL 21, 2010.
- C.S. NO. 2016022, PARTITION REPLAT NO.201608P FOR BALDWIN BY COLUMBIA RIVER SURVEYING AND MAPPING, L.S.60051, APRIL 7, 2016.

REGISTERED  
PROFESSIONAL  
LAND SURVEYOROREGON  
December 30, 2005  
ERIK M. CARLSON  
72306

Expires: December 31, 2025

TERRA SURVEYING

DATE: MARCH 7, 2025  
SCALE: 1" = 50'  
PROJECT: 24120PLA  
ASSESSORS MAP: 3N-10E-35DB  
TAX LOTS 1600 AND 1601  
HOOD RIVER, OREGON 97031  
PHONE: (541) 386-4531  
P.O. BOX 617  
E-Mail: terra@gorge.net  
www.terralandsurveying.com

CS# 2025012