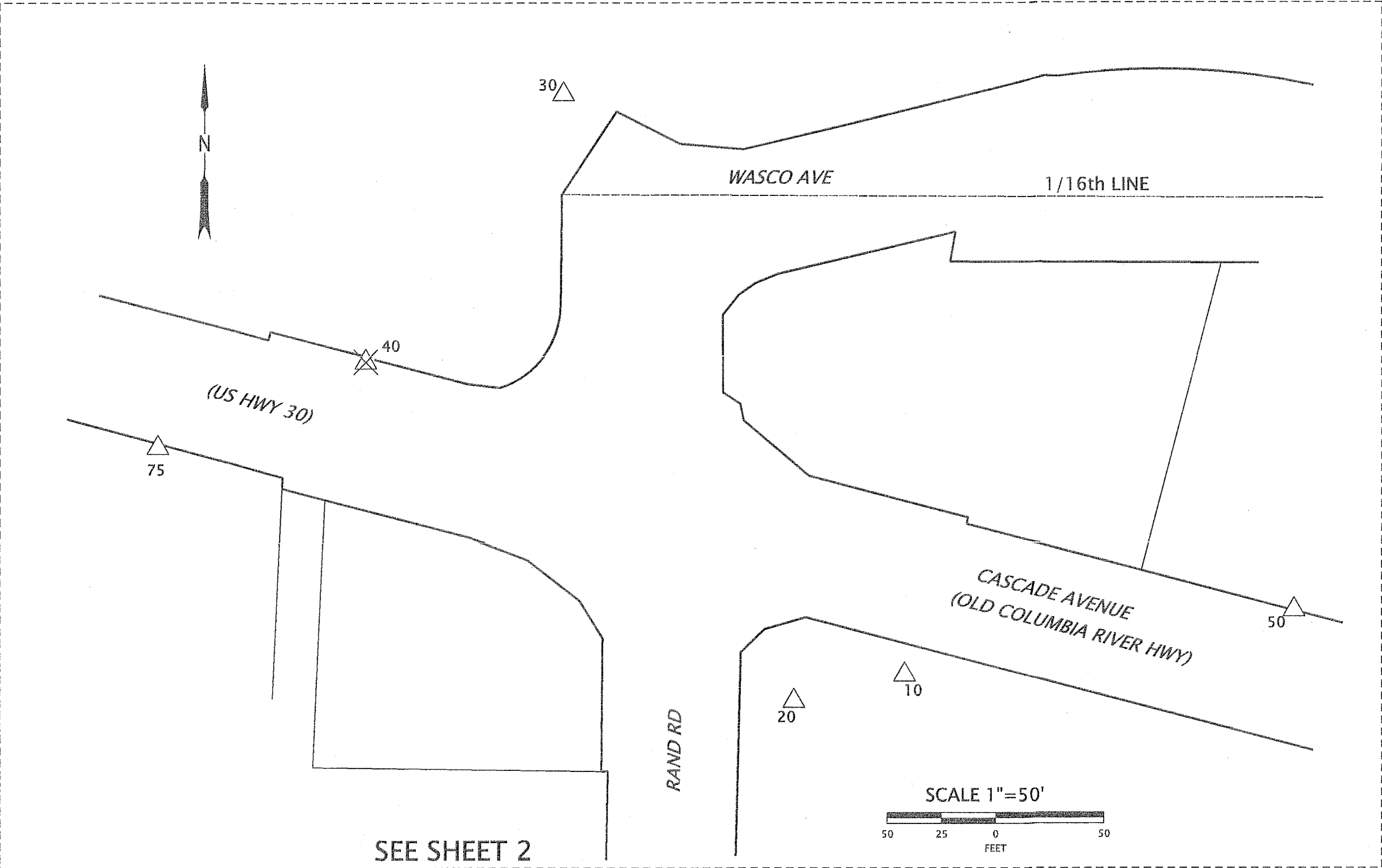


HOOD RIVER COUNTY  
SURVEYOR'S OFFICE

CS# 2025 008

DATE FILED: 2/25/2025

BY: MB



NARRATIVE

THE PURPOSE OF THIS SURVEY IS TO MONUMENT THE RIGHT OF WAY (R/W) ACQUIRED FOR AN OREGON DEPARTMENT OF TRANSPORTATION (ODOT) PROJECT US 30 (CASCADE AVE) AT RAND ROAD IN HOOD RIVER COUNTY, OREGON. THIS SURVEY IS BASED ON HOOD RIVER COUNTY SURVEY CS 2022073. SURVEY CS 2022073 ESTABLISHED THE SURVEY CONTROL, CENTERLINE RESOLUTION AND AND R/W FOR THE PROJECT. THIS SURVEY HELD THE CONTROL AND CENTERLINE ESTABLISHED IN CS 2022073. THE SOUTHWEST CORNER OF THE PROJECT WAS CONSTRUCTED AFTER CS 2023001 SET MONUMENTS AND THEY WERE DESTROYED BY CONSTRUCTION.

MONUMENTS WERE SET AT THE R/W LOCATIONS PER HOOD RIVER COUNTY DEED DOCUMENTS 2022-02068, 2022-02710, 2024-01474, 2024-01470. CALCULATED POINTS WERE ESTABLISHED AT LOCATIONS WITH UTILITY CONFLICTS AND REFERENCE MONUMENTS WERE SET AS SHOWN. POINTS 2027 AND 3009 WERE ESTABLISHED FROM RECORD DATA FROM CS 2023001.

PROPERTY LINES SHOWN ARE FOR GRAPHICAL PURPOSES ONLY AND ARE NOT SURVEYED.

THE HORIZONTAL DATUM IS REFERENCED TO NAD83(2011), EPOCH 2010.00, OREGON COORDINATE REFERENCE SYSTEM (OCRS), COLUMBIA RIVER EAST ZONE, INTERNATIONAL FOOT. THE BASIS OF BEARING IS OCRS, COLUMBIA RIVER EAST ZONE, PER CS 2022073.

CONTROL POINT COORDINATE TABLE

PT. NO.	OCRS NORTHING	OCRS EASTING	STATION	OFFSET	DATE	FOUND CONTROL DESCRIPTION & REFERENCE DOCUMENTS
10	116088.51	226819.96	1161+69.82	43.91 RT	10/28/2024	FOUND 5/8" IR WITH BROKEN OPC, FLUSH, CS 2022073
20	116076.36	226768.83	1161+23.42	68.58 RT	10/28/2024	FOUND 5/8" IR WITH OPC, STAMPED "PACE ENGS CONTROL", FLUSH, CS 2022073
30	116354.30	226662.54	1159+50.35	173.47 LT	10/28/2024	FOUND 5/8" IR WITH OPC, STAMPED "PACE ENGS CONTROL", FLUSH, CS 2022073
50	116118.14	226999.76	1163+36.30	30.19 LT	10/28/2024	FOUND 1-1/4" BRONZE DISC, STAMPED "PACE ENGS", FLUSH, CS 2022073
75	116192.45	226475.16	1158+09.95	30.47 RT	10/28/2024	FOUND MAG NAIL, FLUSH, CS 2022073

REGISTERED  
PROFESSIONAL  
LAND SURVEYOR

Marcus T. Reedy

OREGON  
JULY 21, 1998  
MARCUS T. REEDY  
02871 LS

RENEWALS: 12-31-2026

LEGEND	
	FOUND NETWORK POINT
	NETWORK POINT DESTROYED
CS	HOOD RIVER COUNTY SURVEY REFERENCE
OPC	ORANGE PLASTIC CAP

3 POINT GEOMATICS, LLC.  
8910 SE FULLER ROAD  
HAPPY VALLEY, OR 97086

OREGON DEPARTMENT OF TRANSPORTATION

RIGHT-OF-WAY BOUNDARY MONUMENTATION MAP  
US 30 (CASCADE AVE) AT RAND ROAD  
US HWY. 30 (OLD COLUMBIA RIVER HIGHWAY)  
HOOD RIVER COUNTY

ODOT REGION 1 TECH CENTER  
123 NW FLANDERS ST.  
PORTLAND, OR 97209 KEY NO. 20519

DECEMBER 17, 2024  
SCALE: 1" = 50'  
SHEET 1 OF 2

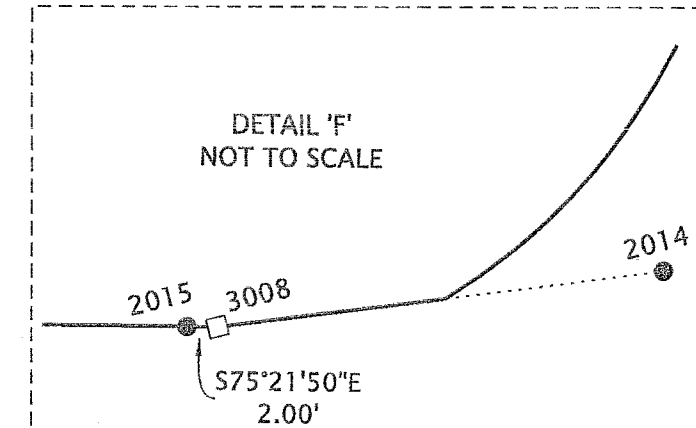
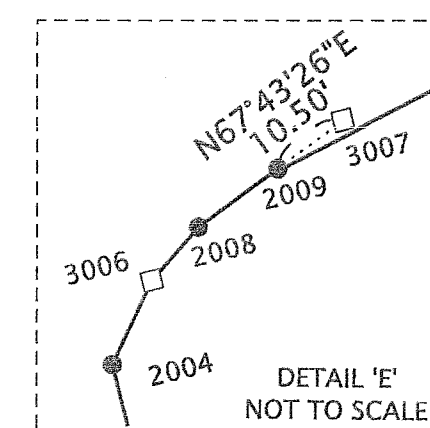
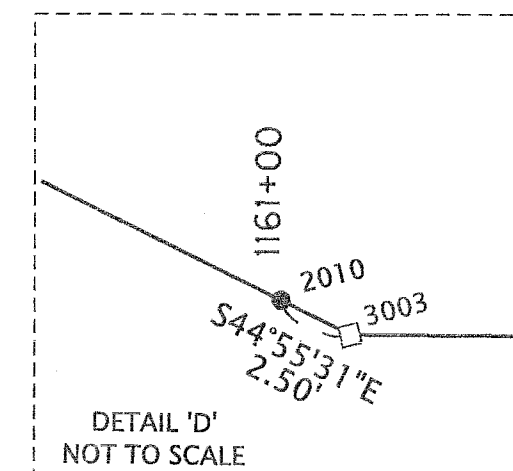
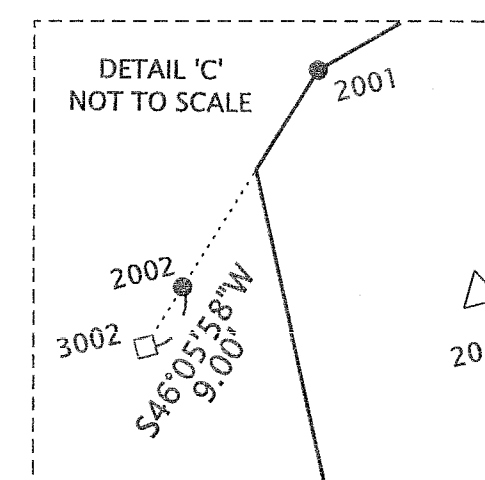
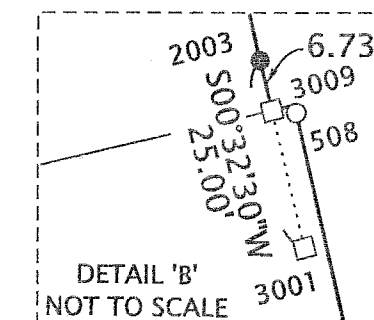
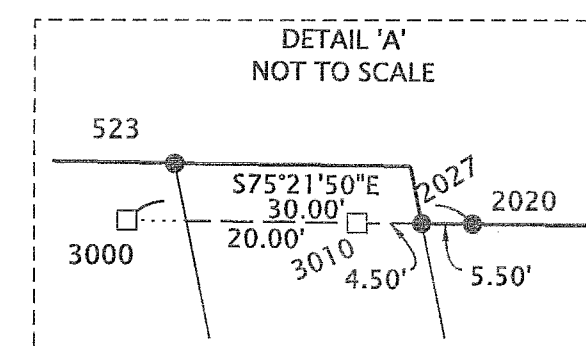
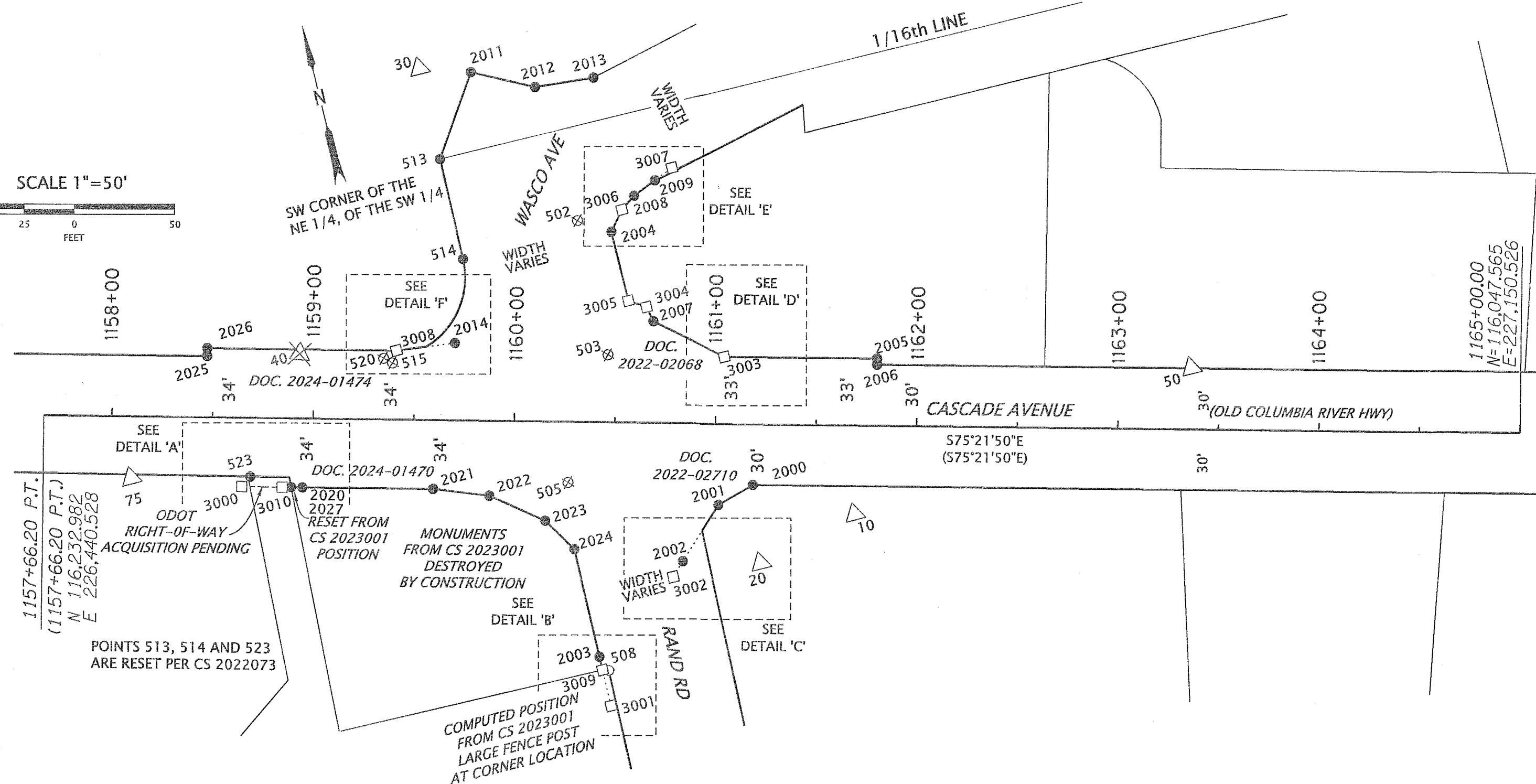
CS# 2025 008

SW 1/4 SECTION 26 T.3N. R. 10 E. W.M.

HOOD RIVER COUNTY  
SURVEYOR'S OFFICE

CS# 2025008  
DATE FILED: 2/25/2025  
BY: *HL*

SCALE 1"=50'  
50 25 0 50  
FEET



MONUMENT COORDINATE TABLE

PT. NO.	OCRS NORTHING	OCRS EASTING	STATION	OFFSET	DATE	SET MONUMENT DESCRIPTION
508	116043.08	226682.89	1160+48.68	122.50 LT	10/28/2024	FOUND 1" IR SLIGHTLY BENT, TIED STRAIGHT PORTION, DOWN 0.50', FOUND IN CS 2022073
513	116308.40	226661.80	1159+61.23	128.88 LT	10/28/2024	SET 5/8" X 30" REBAR WITH YPC STAMPED "3 POINT GEOMATICS"
514	116257.66	226661.20	1159+73.47	79.64 LT	10/28/2024	SET 5/8" X 30" REBAR WITH YPC STAMPED "3 POINT GEOMATICS"
523	116178.89	226532.74	1158+69.08	29.03 RT	10/28/2024	SET 5/8" X 30" REBAR WITH YPC STAMPED "3 POINT GEOMATICS"
2000	116114.81	226774.30	1161+19.00	30.00 RT	10/28/2024	SET 5/8" X 30" REBAR WITH YPC STAMPED "3 POINT GEOMATICS"
2001	116109.43	226755.33	1161+02.00	40.00 RT	10/28/2024	SET 5/8" X 30" REBAR WITH YPC STAMPED "3 POINT GEOMATICS"
2002	116086.41	226731.43	1160+84.70	68.31 RT	10/28/2024	SET 1-1/4" BRASS DISC STAMPED "3 POINT GEOMATICS"
2003	116050.81	226679.98	1160+43.91	115.75 RT	10/28/2024	SET 5/8" X 30" REBAR WITH YPC STAMPED "3 POINT GEOMATICS"
2004	116252.98	226735.97	1160+47.00	94.00 LT	10/28/2024	SET 5/8" X 30" REBAR WITH YPC STAMPED "3 POINT GEOMATICS"
2005	116160.35	226849.24	1161+80.00	33.00 LT	10/28/2024	SET 5/8" X 30" REBAR WITH YPC STAMPED "3 POINT GEOMATICS"
2006	116157.45	226848.49	1161+80.00	30.00 LT	10/28/2024	SET 1-1/4" BRASS DISC STAMPED "3 POINT GEOMATICS"
2007	116204.97	226745.66	1160+68.50	50.00 LT	10/28/2024	SET 5/8" X 30" REBAR WITH YPC STAMPED "3 POINT GEOMATICS"
2008	116267.62	226751.16	1160+58.00	112.00 LT	10/28/2024	SET 1-1/4" BRASS DISC STAMPED "3 POINT GEOMATICS"
2009	116272.47	226763.02	1160+68.25	119.69 LT	10/28/2024	SET 1-1/4" BRASS DISC STAMPED "3 POINT GEOMATICS"
2010	116181.33	226773.94	1161+01.84	34.27 LT	10/28/2024	SET 1-1/4" BRASS DISC STAMPED "3 POINT GEOMATICS"
2011	116346.39	226686.98	1159+76.00	172.00 LT	10/28/2024	SET 5/8" X 30" REBAR WITH YPC STAMPED "3 POINT GEOMATICS"
2012	116331.53	226716.18	1160+08.00	165.00 LT	10/28/2024	SET 5/8" X 30" REBAR WITH YPC STAMPED "3 POINT GEOMATICS"
2013	116329.05	226745.49	1160+37.00	170.00 LT	10/28/2024	SET 5/8" X 30" REBAR WITH YPC STAMPED "3 POINT GEOMATICS"
2014	116218.25	226647.32	1159+70.00	38.00 LT	10/28/2024	SET 1-1/4" BRASS DISC STAMPED "3 POINT GEOMATICS"
2015	116222.22	226616.31	1159+39.00	34.00 LT	10/28/2024	SET 5/8" X 30" REBAR WITH YPC STAMPED "3 POINT GEOMATICS"
2020	116167.54	226556.56	1158+95.00	34.00 RT	10/28/2024	SET 5/8" X 30" REBAR WITH YPC STAMPED "3 POINT GEOMATICS"
2021	116151.12	226619.45	1159+60.00	34.00 RT	10/28/2024	SET 5/8" X 30" REBAR WITH YPC STAMPED "3 POINT GEOMATICS"
2022	116141.14	226645.79	1159+88.00	37.00 RT	10/28/2024	SET 5/8" X 30" REBAR WITH YPC STAMPED "3 POINT GEOMATICS"
2023	116122.45	226669.84	1160+16.00	49.00 RT	10/28/2024	SET 5/8" X 30" REBAR WITH YPC STAMPED "3 POINT GEOMATICS"
2024	116105.20	226680.50	1160+30.67	63.00 RT	10/28/2024	SET 5/8" X 30" REBAR WITH YPC STAMPED "3 POINT GEOMATICS"
2025	116241.71	226526.32	1158+47.00	30.12 LT	10/28/2024	SET 5/8" X 30" REBAR WITH YPC STAMPED "3 POINT GEOMATICS"
2026	116245.46	226527.30	1158+47.00	34.00 LT	10/28/2024	SET 5/8" X 30" REBAR WITH YPC STAMPED "3 POINT GEOMATICS"
2027	116168.93	226551.24	1158+89.50	34.00 RT	12/17/2024	SET 5/8" X 30" REBAR WITH YPC STAMPED "3 POINT GEOMATICS"
3000	116175.12	226527.53	1158+65.00	34.00 RT	N/A	CALCULATED POINT, NO MONUMENT SET
3001	116025.81	226679.75	1160+50.00	140.00 RT	N/A	CALCULATED POINT, NO MONUMENT SET
3002	116080.17	226724.95	1160+80.00	75.98 RT	N/A	CALCULATED POINT, NO MONUMENT SET
3003	116179.56	226775.71	1161+04.00	33.00 LT	N/A	CALCULATED POINT, NO MONUMENT SET
3004	116212.63	226744.04	1160+65.00	57.00 LT	N/A	CALCULATED POINT, NO MONUMENT SET
3005	116217.81	226736.09	1160+56.00	60.00 LT	N/A	CALCULATED POINT, NO MONUMENT SET
3006	116262.36	226743.59	1160+52.00	105.00 LT	N/A	CALCULATED POINT, NO MONUMENT SET
3007	116276.45	226772.73	1160+76.64	126.00 LT	N/A	CALCULATED POINT, NO MONUMENT SET
3008	116221.71	226618.25	1159+41.00	34.00 LT	N/A	CALCULATED POINT, NO MONUMENT SET
3009	116044.08	226679.92	1160+45.55	122.28 RT	N/A	CALCULATED POINT, NO MONUMENT SET
3010	116170.07	226546.88	1158+85.00	34.00 RT	N/A	CALCULATED POINT, NO MONUMENT SET

LEGEND	
( )	RECORD DATA CS 2022073
△	FOUND NETWORK POINT SEE CONTROL TABLE SHEET 1
⊗	NETWORK POINT DESTROYED
●	SET MONUMENT SEE TABLE SHEET 2
○	FOUND MONUMENT SEE TABLE SHEET 2
⊗	MONUMENT DESTROYED SEE CS 2022073
□	CALCULATED POINT SEE TABLE SHEET 2

ABBREVIATIONS	
CS=	HOOD RIVER COUNTY SURVEY RECORD
DOC=	HOOD RIVER COUNTY DEED RECORDS
IR=	IRON ROD
IP=	IRON PIPE
R/W=	RIGHT OF WAY
YPC=	YELLOW PLASTIC CAP
OPC=	ORANGE PLASTIC CAP
ALUM=	ALUMINUM
OPC=	ORANGE PLASTIC CAP

3 POINT GEOMATICS, LLC.  
8910 SE FULLER ROAD  
HAPPY VALLEY, OR 97086

REGISTERED  
PROFESSIONAL  
LAND SURVEYOR

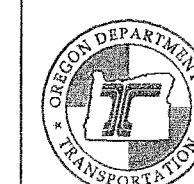
*Marcus T. Reedy*

OREGON  
JULY 21, 1998  
MARCUS T. REEDY  
02871 LS

RENEW: 12-31-2026

OREGON DEPARTMENT OF TRANSPORTATION

RIGHT-OF-WAY BOUNDARY MONUMENTATION MAP  
US 30 (CASCADE AVE) AT RAND ROAD  
US HWY. 30 (OLD COLUMBIA RIVER HIGHWAY)  
HOOD RIVER COUNTY



ODOT REGION 1 TECH CENTER  
123 NW FLANDERS ST.  
PORTLAND, OR 97209 KEY NO. 20519

DECEMBER 17, 2024  
SCALE: 1" = 50'  
SHEET 2 OF 2

CS# 2025008