

S.E. 1/4 SECTION 2, N.E. 1/4 SECTION 11  
T. 2N., R.10E., W.M.  
HOOD RIVER COUNTY, OREGON

HOOD RIVER COUNTY  
SURVEYOR'S OFFICE  
SURVEY NO. 2025003  
FILED: 1/30/2025  
BY: AK

NARRATIVE:

PURPOSE OF THE SURVEY:

THIS SURVEY RESETS MONUMENTS DESTROYED DURING THE CONSTRUCTION OF THE OREGON DEPARTMENT OF TRANSPORTATION (ODOT) PROJECT OR-281 AT ORCHARD ROAD. THIS SURVEY IS LOCATED ON THE HOOD RIVER HIGHWAY OR-281 AT ORCHARD ROAD AND ENCOMPASSES A PORTION OF THE HOOD RIVER HIGHWAY NO. 281 FROM MP 2.33 TO 2.41. MONUMENTS DESTROYED BY CONSTRUCTION HAVE BEEN RESET IN THEIR ORIGINAL POSITION AS SHOWN ON HOOD RIVER COUNTY SURVEY 2023-008. PROPERTY BOUNDARIES HAVE NOT BEEN RESOLVED IN THIS SURVEY BUT ARE SHOWN PER DEED OR OTHER AVAILABLE REFERENCE DATA.

PROJECT CONTROL:

COORDINATES SHOWN ARE OREGON COORDINATE REFERENCE SYSTEM (OCRS) - NORTH CENTRAL ZONE. OCRS ZONE PROJECTION PARAMETERS ARE REFERENCED IN OAR 734-005-0015. HORIZONTAL DATUM IS NAD 83 (2011) EPOCH 2010.00. ALL LINEAR VALUES ARE EXPRESSED IN INTERNATIONAL FEET. GRID DISTANCES CLOSELY MATCH GROUND DISTANCES.

THIS SURVEY UTILIZES CONTROL THAT WAS SET IN HOOD RIVER COUNTY SURVEY 2023-008. NETWORK POINTS 1-5 WERE DESTROYED BY CONSTRUCTION AND THE REMAINING NETWORK POINT 6 AND GPS POINTS TRU, AND DIL WERE UTILIZED. NO ADDITIONAL NETWORK POINTS WERE ESTABLISHED DURING THIS SURVEY.

MONUMENT OBSERVATION NOTES:

A SEARCH FOR ALL SURVEY MONUMENTS WAS MADE WITHIN THE PROJECT LIMITS. HORIZONTAL POSITIONS FOR THE FOUND MONUMENTS WERE OBTAINED USING A COMBINATION OF RTK GPS MEASUREMENTS UTILIZING CORRECTION DATA PRODUCED BY THE ORGN, AND TERRESTRIAL MEASUREMENTS HOLDING THE CONTROL NETWORK ADJUSTED COORDINATES.

THE MONUMENTS WERE SET BY RADIAL COORDINATE STAKEOUT FROM THE CONTROL NETWORK.

ALIGNMENT RECOVERY AND RIGHT OF WAY LINES:

THIS SURVEY USES THE ALIGNMENT OF THE HOOD RIVER HIGHWAY OR281 AND THE RIGHT OF WAY LINES ESTABLISHED IN HOOD RIVER COUNTY SURVEY 2023-008.

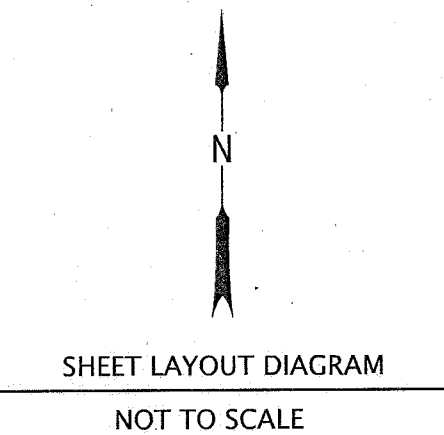
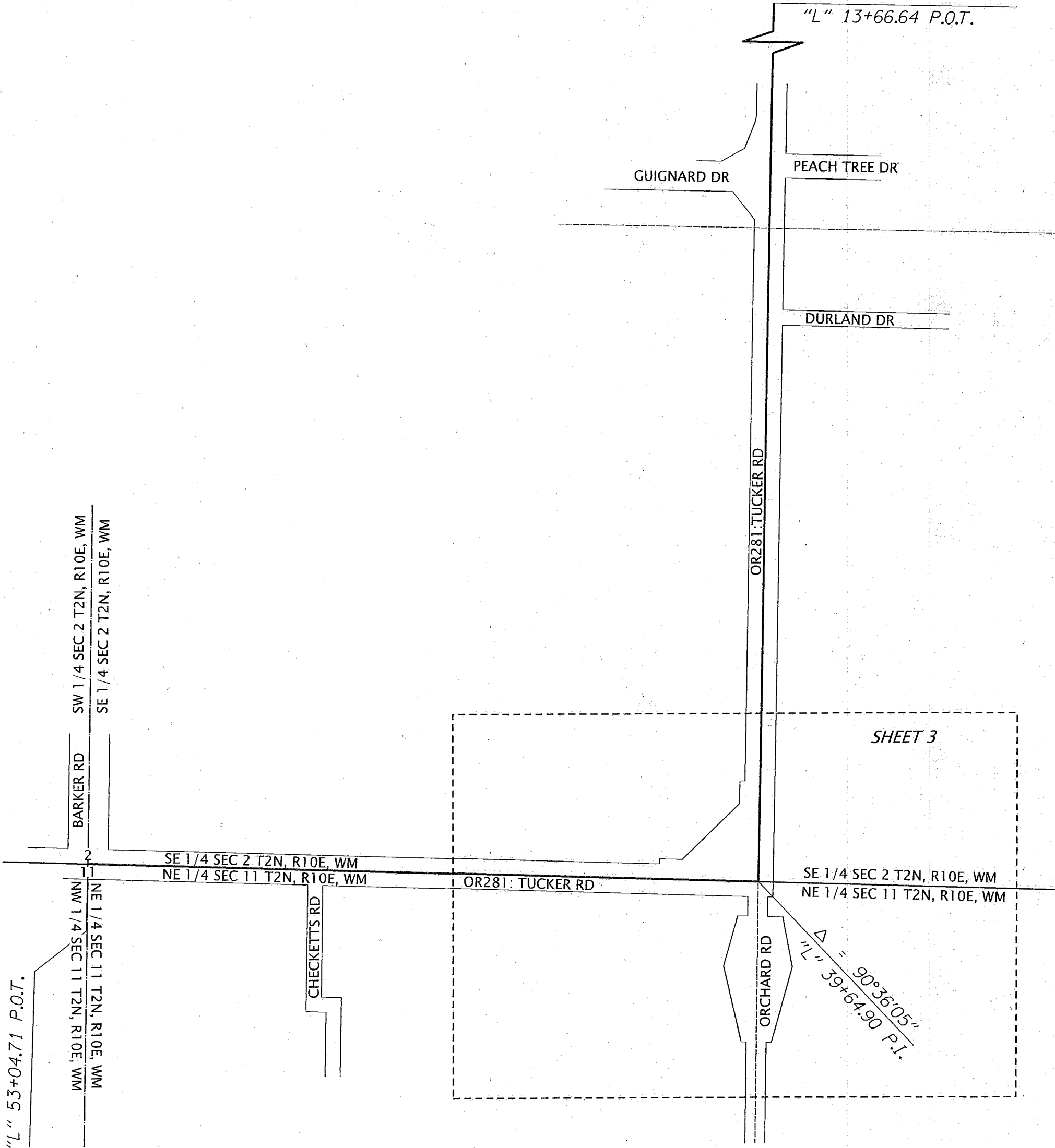
NO NEW RIGHT-OF-WAY OR PERMANENT EASEMENTS WERE ACQUIRED FOR THIS PROJECT.

REFERENCES:

HOOD RIVER COUNTY SURVEYS:  
CS 2023-008

SHEET INDEX:

- 1 NARRATIVE AND SHEET LAYOUT
- 2 BASIS OF BEARING AND PROJECT CONTROL
- 3 MONUMENTATION SHEETS AND TABLE



LEGEND	
	RIGHT OF WAY
	SECTION LINE
	QUATER SECTION LINE
	1/16TH SECTION LINE
	ALIGNMENT CENTERLINE
	APPROXIMATE SHEET BORDER

REGISTERED  
PROFESSIONAL  
LAND SURVEYOR  
  
OREGON  
SEPTEMBER 14, 2021  
JOHN KARL  
90989LS  
RENEWS: 06-30-2025

OREGON DEPARTMENT OF TRANSPORTATION  
RIGHT OF WAY MONUMENTATION SURVEY  
OR281: ORCHARD ROAD (HOOD RIVER)  
HOOD RIVER HWY NO. 281  
HOOD RIVER COUNTY  
  
ODOT REGION 1 TECH CENTER  
123 N.W. FLANDERS STREET  
PORTLAND, OR 97209-4037 KEY NO. 21537  
SEPTEMBER 5, 2024  
SCALE: NONE  
SHEET 1 OF 3

CS# 2025003

S.E. 1/4 SECTION 2, N.E. 1/4 SECTION 11  
T. 2N., R.10E., W.M.  
HOOD RIVER COUNTY, OREGON

HOOD RIVER COUNTY  
SURVEYOR'S OFFICE

SURVEY NO. 2025003

FILED: 1/30/2025

BY: RL

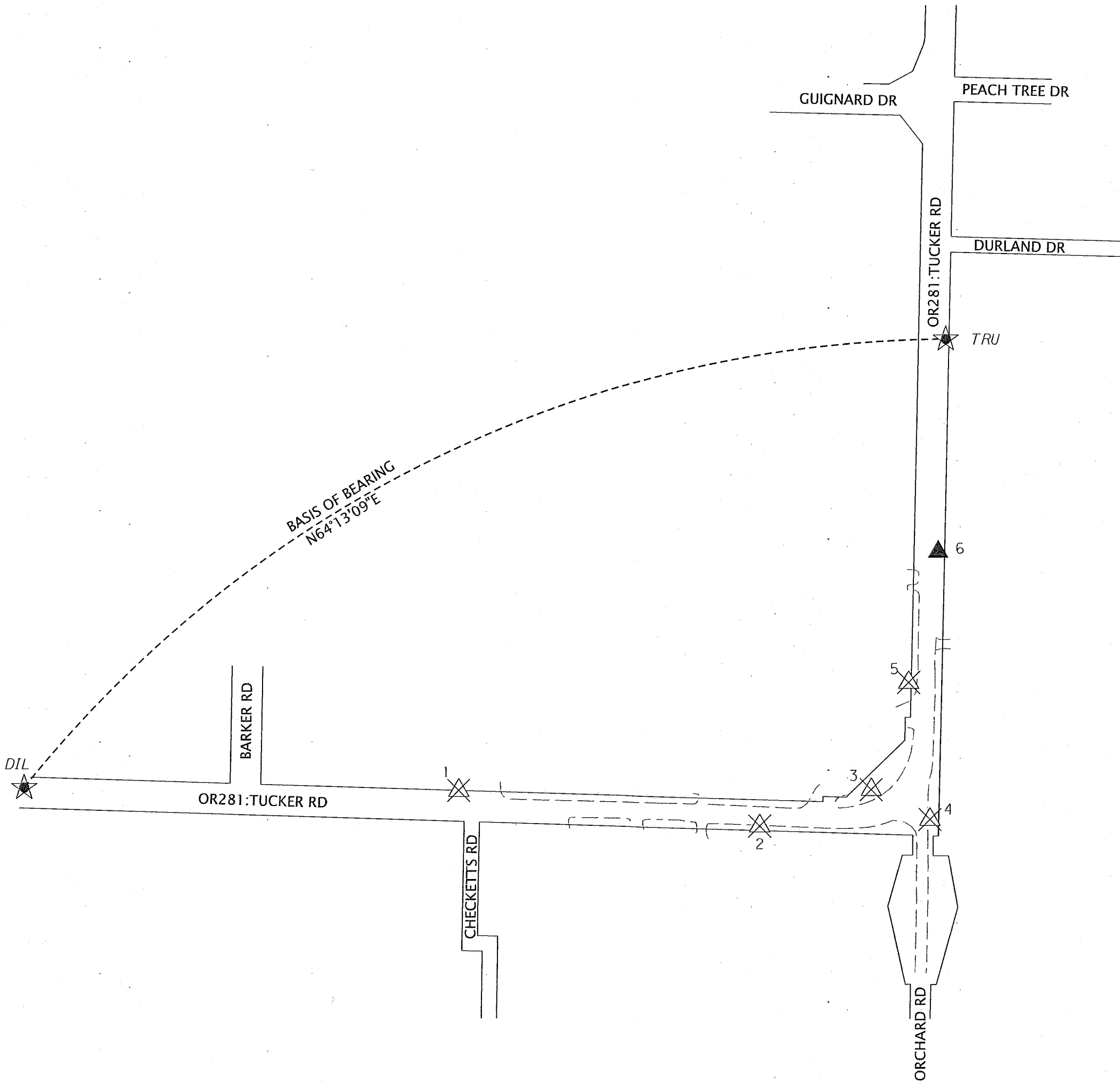
NETWORK DATA:

COORDINATES SHOWN ARE OREGON COORDINATE REFERENCE SYSTEM (OCRS) – NORTH CENTRAL ZONE AND WERE SET IN CS 2023-008  
HORIZONTAL DATUM IS NAD 83 (2011) EPOCH 2010.00  
ALL LINEAR VALUES ARE EXPRESSED IN INTERNATIONAL FEET  
BASIS OF BEARING IS NORTH 64°13'09" EAST FROM HOOD RIVER COUNTY SURVEY 2023-008

NETWORK POINT COORDINATE TABLE

NETWORK LIST, OREGON COORDINATE REFERENCE SYSTEM (OCRS), NORTH CENTRAL ZONE, NAD 83 (2011) EPOCH 2010.00

PT. NO.	OCRS NORTHING	OCRS EASTING	DATE	DESCRIPTION
DIL	283118.550	63308.404	08/13/2024	FOUND 5/8" X 30" IRON ROD WITH 1-1/2" BRASS CAP WITH PUNCH MARK STAMPED "ODOT CONTROL DIL" FLUSH IN GROUND
TRU	283990.434	65113.514	08/13/2024	FOUND 5/8" X 30" IRON ROD WITH 1-1/2" BRASS CAP WITH PUNCH MARK STAMPED "ODOT CONTROL TRU" FLUSH IN GROUND
1	283112.290	64159.800	08/13/2024	DESTROYED
2	283042.830	64749.780	08/13/2024	DESTROYED
3	283113.410	64968.170	08/13/2024	DESTROYED
4	283054.950	65083.600	08/13/2024	DESTROYED
5	283321.700	65041.150	08/13/2024	DESTROYED
6	283576.320	65098.340	08/13/2024	FOUND 5/8" X 30" IRON ROD WITH 1-1/2" BRASS CAP WITH PUNCH MARK STAMPED "ODOT CONTROL 6" DOWN 0.3 IN GRAVEL



N  
BASIS OF BEARING AND  
CONTROL NETWORK SCHEMATIC  
NOT TO SCALE

LEGEND	
	DESTROYED NETWORK POINT
	FOUND GPS STATION
	FOUND NETWORK POINT
	RIGHT OF WAY
	EDGE OF ASPHALT

REGISTERED  
PROFESSIONAL  
LAND SURVEYOR  
  
OREGON  
SEPTEMBER 14, 2021  
JOHN KARL  
90989LS  
RENEWS: 06-30-2025

OREGON DEPARTMENT OF TRANSPORTATION  
RIGHT OF WAY MONUMENTATION SURVEY  
OR281: ORCHARD ROAD (HOOD RIVER)  
HOOD RIVER HWY NO. 281  
HOOD RIVER COUNTY  
  
ODOT REGION 1 TECH CENTER  
123 N.W. FLANDERS STREET  
PORTLAND, OR 97209-4037 KEY NO. 21537  
SEPTEMBER 5, 2024  
SCALE: NONE  
SHEET 2 OF 3

C5# 2025003

