

TERRA SURVEYING  
**RECORD OF SURVEY**  
 for  
**FIR MOUNTAIN, LLC**

HOOD RIVER COUNTY  
 SURVEYOR'S OFFICE

CS# 2024049

DATE FILED: 11/26/2024

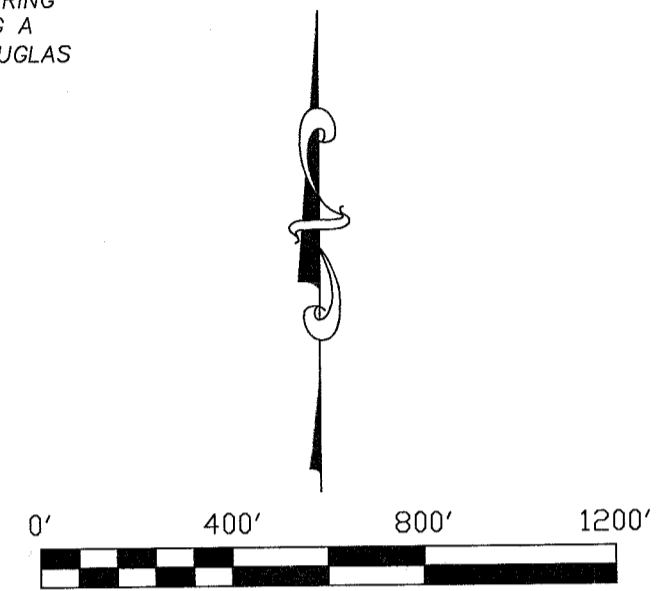
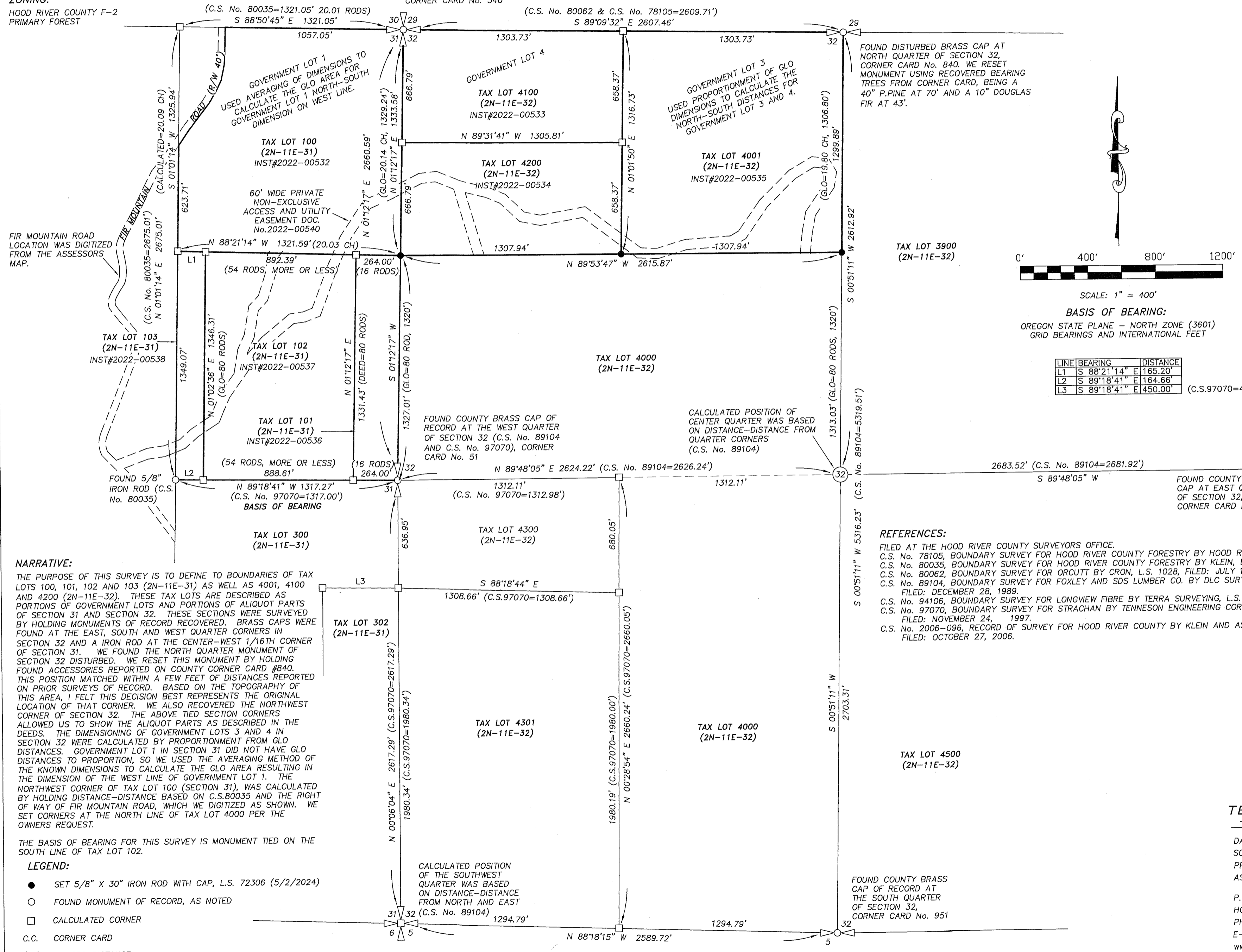
BY: RA

**LOCATION OF SURVEY:**  
 TRACTS OF LAND LOCATED IN THE NORTHEAST QUARTER  
 OF SECTION 31 AND THE NORTHWEST QUARTER OF  
 SECTION 32, TOWNSHIP 2 NORTH, RANGE 11 EAST OF THE  
 WILLAMETTE MERIDIAN IN THE COUNTY OF HOOD RIVER  
 AND STATE OF OREGON.

**ZONING:**  
 HOOD RIVER COUNTY F-2  
 PRIMARY FOREST

FOUND COUNTY BRASS  
 CAP OF RECORD AT THE  
 CORNER COMMON TO  
 SECTIONS 29,30,31,32.  
 CORNER CARD No. 340

FOUND DISTURBED BRASS CAP AT  
 NORTH QUARTER OF SECTION 32,  
 CORNER CARD No. 840. WE RESET  
 MONUMENT USING RECOVERED BEARING  
 TREES FROM CORNER CARD, BEING A  
 40" P.PINE AT 70' AND A 10" DOUGLAS  
 FIR AT 43'.



SCALE: 1" = 400'  
**BASIS OF BEARING:**  
 OREGON STATE PLANE - NORTH ZONE (3601)  
 GRID BEARINGS AND INTERNATIONAL FEET

LINE	BEARING	DISTANCE
L1	S 88°21'14" E	165.20'
L2	S 89°18'41" E	164.66'
L3	S 89°18'41" E	450.00'

(C.S.97070=450.00')

**NARRATIVE:**  
 THE PURPOSE OF THIS SURVEY IS TO DEFINE TO BOUNDARIES OF TAX  
 LOTS 100, 101, 102 AND 103 (2N-11E-31) AS WELL AS 4001, 4100  
 AND 4200 (2N-11E-32). THESE TAX LOTS ARE DESCRIBED AS  
 PORTIONS OF GOVERNMENT LOTS AND PORTIONS OF ALIQUOT PARTS  
 OF SECTION 31 AND SECTION 32. THESE SECTIONS WERE SURVEYED  
 BY HOLDING MONUMENTS OF RECORD RECOVERED. BRASS CAPS WERE  
 FOUND AT THE EAST, SOUTH AND WEST QUARTER CORNERS IN  
 SECTION 32 AND AN IRON ROD AT THE CENTER-WEST 1/16TH CORNER  
 OF SECTION 31. WE FOUND THE NORTH QUARTER MONUMENT OF  
 SECTION 32 DISTURBED. WE RESET THIS MONUMENT BY HOLDING  
 FOUND ACCESSORIES REPORTED ON COUNTY CORNER CARD #840.  
 THIS POSITION MATCHED WITHIN A FEW FEET OF DISTANCES REPORTED  
 ON PRIOR SURVEYS OF RECORD. BASED ON THE TOPOGRAPHY OF  
 THIS AREA, I FELT THIS DECISION BEST REPRESENTS THE ORIGINAL  
 LOCATION OF THAT CORNER. WE ALSO RECOVERED THE NORTHWEST  
 CORNER OF SECTION 32. THE ABOVE TIED SECTION CORNERS  
 ALLOWED US TO SHOW THE ALIQUOT PARTS AS DESCRIBED IN THE  
 DEEDS. THE DIMENSIONING OF GOVERNMENT LOTS 3 AND 4 IN  
 SECTION 32 WERE CALCULATED BY PROPORTIONMENT FROM GLO  
 DISTANCES. GOVERNMENT LOT 1 IN SECTION 31 DID NOT HAVE GLO  
 DISTANCES TO PROPORTION, SO WE USED THE AVERAGING METHOD OF  
 THE KNOWN DIMENSIONS TO CALCULATE THE GLO AREA RESULTING IN  
 THE DIMENSION OF THE WEST LINE OF GOVERNMENT LOT 1. THE  
 NORTHWEST CORNER OF TAX LOT 100 (SECTION 31), WAS CALCULATED  
 BY HOLDING DISTANCE-DISTANCE BASED ON C.S.80035 AND THE RIGHT  
 OF WAY OF FIR MOUNTAIN ROAD, WHICH WE DIGITIZED AS SHOWN. WE  
 SET CORNERS AT THE NORTH LINE OF TAX LOT 4000 PER THE  
 OWNERS REQUEST.

THE BASIS OF BEARING FOR THIS SURVEY IS MONUMENT TIED ON THE  
 SOUTH LINE OF TAX LOT 102.

- LEGEND:**
- SET 5/8" X 30" IRON ROD WITH CAP, L.S. 72306 (5/2/2024)
  - FOUND MONUMENT OF RECORD, AS NOTED
  - CALCULATED CORNER
  - C.C. CORNER CARD
  - ( ) RECORD DISTANCE

**REFERENCES:**  
 FILED AT THE HOOD RIVER COUNTY SURVEYORS OFFICE.  
 C.S. No. 78105, BOUNDARY SURVEY FOR HOOD RIVER COUNTY FORESTRY BY KLEIN, L.S. 932, FILED: APRIL 21, 1980.  
 C.S. No. 80035, BOUNDARY SURVEY FOR HOOD RIVER COUNTY FORESTRY BY KLEIN, L.S. 932, FILED: APRIL 21, 1980.  
 C.S. No. 80062, BOUNDARY SURVEY FOR ORCUTT BY CRON, L.S. 1028, FILED: JULY 1, 1980.  
 C.S. No. 89104, BOUNDARY SURVEY FOR FOXLEY AND SDS LUMBER CO. BY DLC SURVEYING, L.S. 1028,  
 FILED: DECEMBER 28, 1989.  
 C.S. No. 94106, BOUNDARY SURVEY FOR LONGVIEW FIBRE BY TERRA SURVEYING, L.S. 1815, FILED: OCTOBER 21, 1994.  
 C.S. No. 97070, BOUNDARY SURVEY FOR STRACHAN BY TENNESON ENGINEERING CORP., L.S. 385,  
 FILED: NOVEMBER 24, 1997.  
 C.S. No. 2006-096, RECORD OF SURVEY FOR HOOD RIVER COUNTY BY KLEIN AND ASSOC., L.S. 59002,  
 FILED: OCTOBER 27, 2006.

REGISTERED  
 PROFESSIONAL  
 LAND SURVEYOR  
  
 OREGON  
 December 30, 2005  
 ERIK M. CARLSON  
 72306  
 Expires: December 31, 2025

**TERRA SURVEYING**  
 DATE: MAY 2, 2024  
 SCALE: 1" = 400'  
 PROJECT: 20167BOUND  
 ASSESSORS MAP: 2N-11E-31 AND 32  
 P.O. BOX 617  
 HOOD RIVER, OREGON 97031  
 PHONE: (541) 386-4531  
 E-Mail: terra@gorge.net  
 www.terrandsurveying.com

CS# 2024049