

N.E. 1/4 SECTION 35 N.W. 1/4 SECTION 36
 NATHANIEL COE D.L.C. NO. 37 WILLIAM JENKINS D.L.C. NO. 38
 T. 3 N., R. 10 E., W.M.
 CITY OF HOOD RIVER, HOOD RIVER COUNTY, OREGON

HOOD RIVER COUNTY
 SURVEYOR'S OFFICE
 SURVEY NO. 2023009
 FILED: 3/22/2023
 BY: AS

NARRATIVE:

PURPOSE OF THE SURVEY:

THE PURPOSE OF THIS SURVEY IS TO ESTABLISH PERMANENT HORIZONTAL CONTROL, RECOVER AND IDENTIFY MONUMENTS WHICH MAY BE DISTURBED BY FUTURE CONSTRUCTION AND LOCATE THE EXISTING CENTERLINE AND RIGHT OF WAY (R/W) LINES BASED ON RECOVERED MONUMENTS, FOR A PROPOSED OREGON DEPARTMENT OF TRANSPORTATION (ODOT) CONSTRUCTION PROJECT: MAY STREET ELEVATED SIDEWALK REPLACEMENT, KEY NUMBER 20331. THIS PROJECT ENCOMPASSES A PORTION OF HOOD RIVER HIGHWAY NO. 281, FROM MP 0.30 TO 0.35. THIS SURVEY MEETS THE REQUIREMENTS OF ORS 209.155. PROPERTY BOUNDARIES HAVE NOT BEEN RESOLVED IN THIS SURVEY BUT ARE SHOWN PER DEED OR OTHER AVAILABLE REFERENCE DATA.

PROJECT CONTROL:

COORDINATES SHOWN ARE OREGON COORDINATE REFERENCE SYSTEM (OCRS) - NORTH CENTRAL ZONE. OCRS ZONE PROJECTION PARAMETERS ARE REFERENCED IN OAR 734-005-0015. HORIZONTAL DATUM IS NAD 83 (2011) EPOCH 2010.00. ALL LINEAR VALUES ARE EXPRESSED IN INTERNATIONAL FEET.

A PRIMARY HORIZONTAL CONTROL NETWORK WAS ESTABLISHED DURING JANUARY, 2020, USING RAPID STATIC GPS MEASUREMENTS. GPS MEASUREMENTS WERE MADE USING LEICA GS14 DUAL FREQUENCY RECEIVERS. EACH OF THE STATIONS IN THE GPS NETWORK WERE OCCUPIED TWO OR MORE TIMES.

FOR PRIMARY NETWORK CONTROL STATIONS "HRMS" AND "JJB", THE GPS DATA WAS ADJUSTED USING LEICA INFINITY VERSION 3.0 LEAST SQUARES ADJUSTMENT SOFTWARE. THE NETWORK WAS HORIZONTALLY CONSTRAINED TO THE NAD 83 (2011) EPOCH 2010.00 POSITIONS OF OREGON REAL-TIME GPS NETWORK (ORGN) STATIONS "P429", "TDLS" AND "WAMC" AS PUBLISHED BY THE ODOT GEOMETRONICS UNIT. THE RESULTING ERROR ELLIPSE SEMI-MAJOR AXIS LENGTHS AT THE 95% CONFIDENCE LEVEL FOR THE PRIMARY CONTROL STATIONS WERE LESS THAN 0.04 FEET, RELATIVE TO EACH OTHER AND THE POSITION OF HELD CONTROL. FINAL PROJECT CONTROL COORDINATES WERE ESTABLISHED BY PROJECTING THE ADJUSTED NETWORK POSITIONS TO THE OCRS - NORTH CENTRAL ZONE, REPRESENTING APPROXIMATE GROUND DISTANCES.

A SECONDARY HORIZONTAL CONTROL NETWORK WAS ESTABLISHED DURING JANUARY, 2020, USING TERRESTRIAL MEASUREMENTS. TERRESTRIAL MEASUREMENTS WERE MADE USING A LEICA TS16 1" ANGULAR PRECISION TOTAL STATION INSTRUMENT.

FOR SECONDARY NETWORK CONTROL POINTS 1-5, THE TERRESTRIAL DATA WAS ADJUSTED USING LEICA INFINITY VERSION 3.0 LEAST SQUARES ADJUSTMENT SOFTWARE. THE NETWORK WAS HORIZONTALLY CONSTRAINED TO PRIMARY NETWORK CONTROL STATIONS "HRMS" AND "JJB". THE RESULTING ERROR ELLIPSE SEMI-MAJOR AXIS LENGTHS AT THE 95% CONFIDENCE LEVEL FOR THE SECONDARY CONTROL STATIONS WERE LESS THAN 0.02 FEET, RELATIVE TO EACH OTHER AND THE POSITION OF HELD CONTROL.

MONUMENT OBSERVATION NOTES:

A SEARCH FOR SURVEY MONUMENTS WAS MADE WITHIN THE PROJECT LIMITS. HORIZONTAL POSITIONS FOR THE FOUND MONUMENTS WERE OBTAINED USING A COMBINATION OF RTK GPS MEASUREMENTS UTILIZING CORRECTION DATA PRODUCED BY THE ORGN, AND TERRESTRIAL MEASUREMENTS HOLDING THE CONTROL NETWORK ADJUSTED COORDINATES.

ALIGNMENT RECOVERY:

"L" (HOOD RIVER HWY/OR 281/13TH STREET)
 ALIGNMENT PER PLAT OF ADAM'S ADDITION TO THE CITY OF HOOD RIVER, CITY OF HOOD RIVER SURVEY CS 1978034 AND CITY OF HOOD RIVER DEED DOCUMENT F-820503. HELD RECORD GEOMETRY. HELD RADIUS AND CENTRAL ANGLE FOR CURVE DATA. HELD MONUMENTS #1013 (CITY MONUMENT #28) AND #1014 (SW CORNER NATHANIEL COE DLC NO. 37/CITY MONUMENT #27) FOR WEST LINE OF NATHANIEL COE DLC NO. 37/DIRECTION OF BEGINNING TANGENT, PER CS 1978034. ASSUMED STATION OF "L" 100+00.00 P.O.T. AT MONUMENT #1014. EXTENDED BEGINNING TANGENT 70 FT SOUTHERLY OF MONUMENT #1014, PER DEED DOCUMENT F-820503.

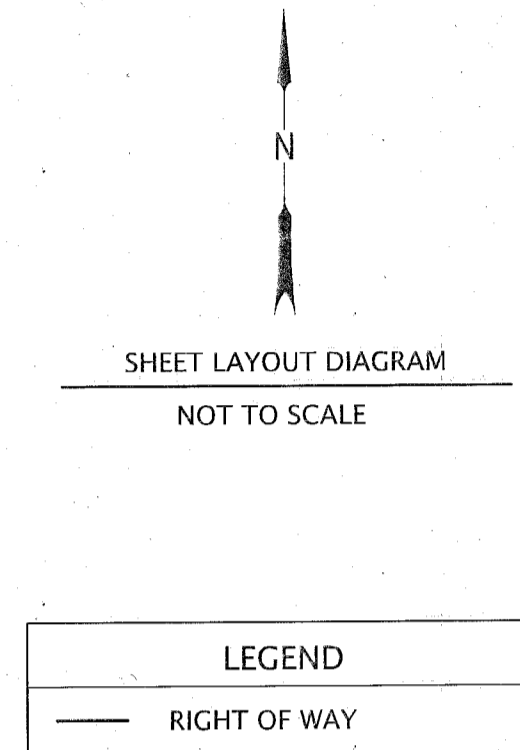
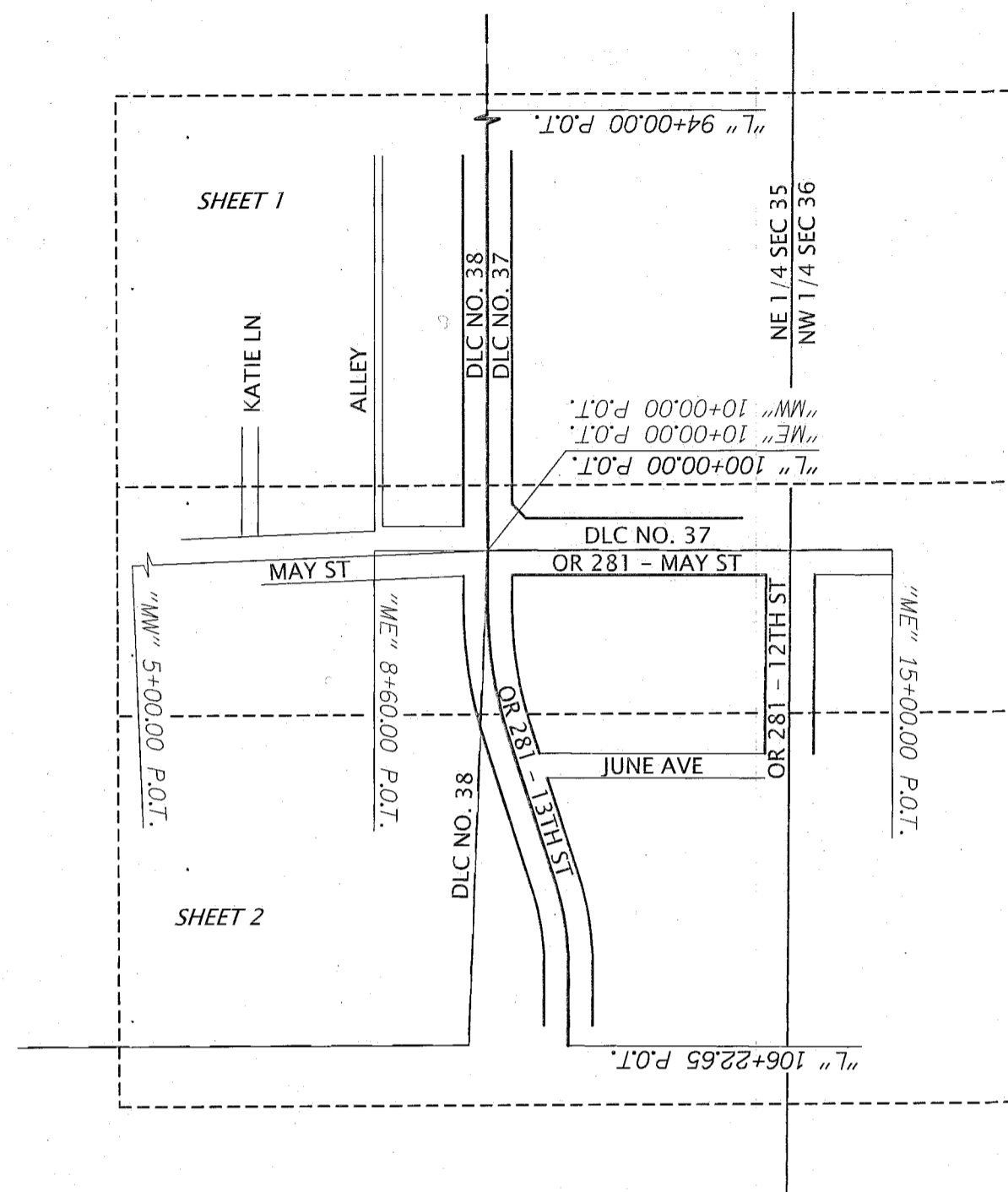
"ME" (HOOD RIVER HWY/OR 281/MAY STREET)
 ALIGNMENT PER PLAT OF ADAM'S ADDITION TO THE CITY OF HOOD RIVER, PLAT OF BALDWIN'S ADDITION TO HOOD RIVER, CS 1979019, CS 1984067, CS 1990053 AND CS 2007032. HELD MONUMENTS #1014 (SW CORNER NATHANIEL COE DLC NO. 37/CITY MONUMENT #27) AND #1015 (CITY MONUMENT #15) FOR SOUTH LINE OF NATHANIEL COE DLC NO. 37/DIRECTION OF TANGENT. ASSUMED STATION OF "ME" 10+00.00 P.O.T. AT MONUMENT #1014. EXTENDED TANGENT 140 FT WESTERLY OF MONUMENT #1014, PER CS 1979019.

"MW" (MAY STREET)
 ALIGNMENT PER PLAT OF ADAM'S PARADISE ACREAGE, CS 1080, CS 1979019, CS 2000093 AND CS 2004021. HELD MONUMENT #1014 (SW CORNER NATHANIEL COE DLC NO. 37/CITY MONUMENT #27) FOR POSITION AND 30 FT OFFSET FROM MONUMENT #1003 (CS 2004021) FOR DIRECTION OF TANGENT. ASSUMED STATION OF "MW" 10+00.00 P.O.T. AT MONUMENT #1014.

RIGHT OF WAY LINES:

HOOD RIVER HWY/OR 281/13TH STREET
 HELD 60 FT WIDTH (30 FT WIDTH FROM "L" ALIGNMENT) NORTH OF MAY STREET, PER PLAT OF ADAM'S ADDITION TO THE CITY OF HOOD RIVER. HELD 60 FT WIDTH (30 FT WIDTH FROM "L" ALIGNMENT) SOUTH OF MAY STREET, PER CITY OF HOOD RIVER DEED DOCUMENT F-820503.

HOOD RIVER HWY/OR 281/MAY STREET, EAST OF 13TH STREET
 HELD 30 FT WIDTH FROM "ME" ALIGNMENT FOR SOUTHERLY RIGHT OF WAY, PER PLAT OF BALDWIN'S ADDITION TO HOOD RIVER, AND AS SHOWN IN CS 1984067 AND CS 1990053. HELD VARIABLE WIDTH FROM "ME" ALIGNMENT FOR NORTHERLY RIGHT OF WAY, PER PLAT OF BALDWIN'S ADDITION TO HOOD RIVER AND CITY OF HOOD RIVER DEED DOCUMENTS BOOK 57, PAGE 223 AND F-841922, AND AS SHOWN IN CS 2007032.



SHEET INDEX:

- 1 NARRATIVE AND SHEET LAYOUT
- 2 BASIS OF BEARING AND PROJECT CONTROL
- 3-4 RECOVERY SURVEY
- 5 MONUMENT TABLE

MAY STREET, WEST OF 13TH STREET
 HELD 60 FT WIDTH (30 FT WIDTH FROM "ME" ALIGNMENT) PER PLAT OF ADAM'S ADDITION TO THE CITY OF HOOD RIVER. IN ADDITION, HELD A TOTAL WIDTH OF 60 FT (30 FT WIDTH FROM "MW" ALIGNMENT) PER PLAT OF ADAM'S PARADISE ACREAGE AND CITY OF HOOD RIVER DEED DOCUMENT BOOK 20, PAGE 112. THIS LEAVES A JOG IN THE NORTHERLY RIGHT OF WAY BETWEEN THE PLAT OF ADAM'S ADDITION TO THE CITY OF HOOD RIVER AND THE PLAT OF ADAM'S PARADISE ACREAGE, AS SHOWN IN CS 1979019, CS 1979108 AND CS 1995038.

OTHER ROADS WERE NOT FULLY RESOLVED IN THIS SURVEY, BUT ARE SHOWN PER DEED OR OTHER AVAILABLE REFERENCE DATA.

REFERENCES:

HOOD RIVER COUNTY SURVEYS:
 CS 0759, CS 1080, CS 1162, CS 1521, CS 1975027, CS 1976009, CS 1978034, CS 1979019, CS 1979028, CS 1979108, CS 1984027, CS 1984062, CS 1984067, CS 1986003, CS 1990053, CS 1993045, CS 1995038, CS 1998061, CS 2000093, CS 2004021, CS 2004085, CS 2006102, CS 2007032, CS 2007063, CS 2007064, CS 2016019

HOOD RIVER COUNTY PARTITION PLATS:
 PP 2001-20P, PP 2006-17P, PP 2007-24P, PP 2012-04P

HOOD RIVER COUNTY SUBDIVISION PLATS:
 ADAMS PARADISE ACREAGE, ADAM'S ADDITION TO THE CITY OF HOOD RIVER, BALDWIN'S ADDITION TO HOOD RIVER, BALDWIN'S SECOND ADDITION TO HOOD RIVER, BLOWERS SECOND ADDITION TO HOOD RIVER, KATIE LANE SUBDIVISION PHASE IV, KATIE LANE SUBDIVISION PHASE V

HOOD RIVER COUNTY CORNER REPORTS:
 CC 0992

HOOD RIVER COUNTY DEED DOCUMENTS BY BOOK AND PAGE:
 BOOK 19, PAGE 318, BOOK 20, PAGE 112, BOOK 57, PAGE 85, BOOK 57, PAGE 223

HOOD RIVER COUNTY DEED DOCUMENTS BY FILM NUMBER:
 F-50712, F-67752, F-841922, F-820503, F-850144, F-901825, F-950464, F-992008, F-994005

HOOD RIVER COUNTY DEED DOCUMENTS BY INSTRUMENT NUMBER:
 2009-00643, 2015-03917, 2018-04203

ODOT DRAWINGS:
 1R-4-859, APRIL, 1985
 6B-32-2, MARCH, 1949

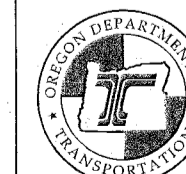
REGISTERED
 PROFESSIONAL
 LAND SURVEYOR

OREGON
 JANUARY 20, 1998
 FESTUS I. OBJIIOFOR
 02852

RENEWS: 12-31-2024

OREGON DEPARTMENT OF TRANSPORTATION

HORIZONTAL CONTROL, RECOVERY AND RETRACEMENT SURVEY
 MAY STREET ELEVATED SIDEWALK REPLACEMENT
 HOOD RIVER HWY NO. 281
 HOOD RIVER COUNTY



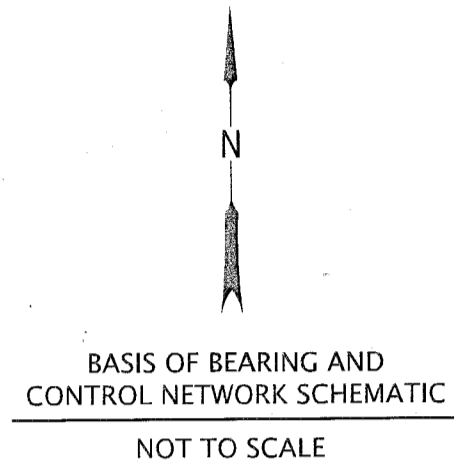
ODOT REGION 1 TECH CENTER
 123 N.W. FLANDERS STREET
 PORTLAND, OR 97209-4037 KEY NO. 20331

MARCH 1, 2020
 SCALE: NONE
 SHEET 1 OF 5

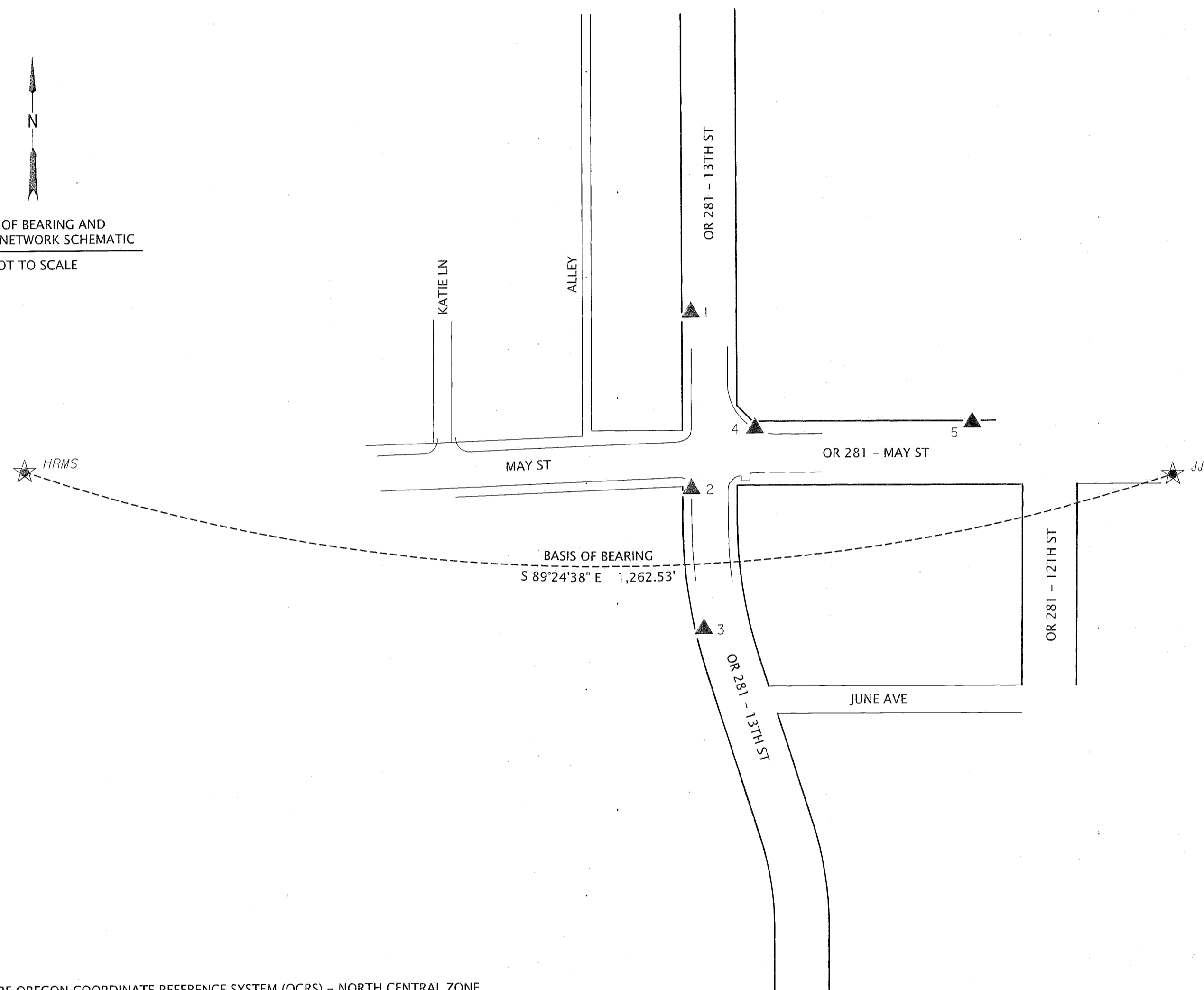
CS# 2023009

N.E. 1/4 SECTION 35 N.W. 1/4 SECTION 36
 NATHANIEL COE D.L.C. NO. 37 WILLIAM JENKINS D.L.C. NO. 38
 T. 3 N., R. 10 E., W.M.
 CITY OF HOOD RIVER, HOOD RIVER COUNTY, OREGON

HOOD RIVER COUNTY
 SURVEYOR'S OFFICE
 SURVEY NO. 2023009
 FILED: 3/22/2023
 BY: *MS*



LEGEND	
	SET GPS STATION
	SET NETWORK POINT
	RIGHT OF WAY
	GUTTER LINE
	EDGE OF PAVEMENT



NETWORK DATA:

COORDINATES SHOWN ARE OREGON COORDINATE REFERENCE SYSTEM (OCRS) - NORTH CENTRAL ZONE
 HORIZONTAL DATUM IS NAD 83 (2011) EPOCH 2010.00
 ALL LINEAR VALUES ARE EXPRESSED IN INTERNATIONAL FEET

NETWORK POINT COORDINATE TABLE

POINT NO.	OCRS NORTHING	OCRS EASTING	DATE	DESCRIPTION
1	292492.019	66146.954	01/29/20	SET 1-5/32" COPPER ALLOY DISK WITH PUNCH MARK, STAMPED "ODOT CONTROL 1", FLUSH IN CONCRETE CURB
2	292298.611	66146.343	01/29/20	SET 1-5/32" COPPER ALLOY DISK WITH PUNCH MARK, STAMPED "ODOT CONTROL 2", FLUSH IN CONCRETE CURB
3	292145.398	66159.146	01/29/20	SET 1-5/32" COPPER ALLOY DISK WITH PUNCH MARK, STAMPED "ODOT CONTROL 3", FLUSH IN CONCRETE CURB
4	292364.524	66216.756	01/29/20	SET 1-5/32" COPPER ALLOY DISK WITH PUNCH MARK, STAMPED "ODOT CONTROL 4", FLUSH IN CONCRETE CURB
5	292369.034	66455.674	01/29/20	SET 1-5/32" COPPER ALLOY DISK WITH PUNCH MARK, STAMPED "ODOT CONTROL 5", FLUSH IN CONCRETE WALK
HRMS	292323.012	65413.359	01/06/20	SET 1-5/32" COPPER ALLOY DISK WITH PUNCH MARK, STAMPED "ODOT CONTROL HRMS", FLUSH IN CONCRETE CURB
JJB	292310.024	66675.827	01/06/20	SET 1-5/32" COPPER ALLOY DISK WITH PUNCH MARK, STAMPED "ODOT CONTROL JJB", FLUSH IN CONCRETE CURB

REGISTERED
 PROFESSIONAL
 LAND SURVEYOR

 OREGON
 JANUARY 20, 1998
 FESTUS I. OBJIOFOR
 02852
 RENEWS: 12-31-2024

OREGON DEPARTMENT OF TRANSPORTATION
 HORIZONTAL CONTROL, RECOVERY AND RETRACEMENT SURVEY
 MAY STREET ELEVATED SIDEWALK REPLACEMENT
 HOOD RIVER HWY NO. 281
 HOOD RIVER COUNTY

 ODOT REGION 1 TECH CENTER
 123 N.W. FLANDERS STREET
 PORTLAND, OR 97209-4037 KEY NO. 20331
 MARCH 1, 2020
 SCALE: NONE
 SHEET 2 OF 5

CS# 2023009

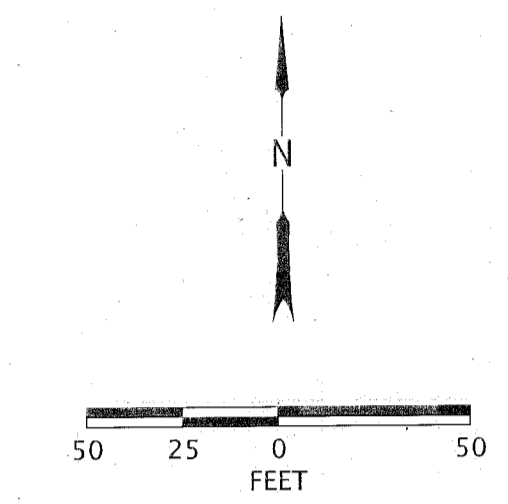
N.E. 1/4 SECTION 35 N.W. 1/4 SECTION 36
 NATHANIEL COE D.L.C. NO. 37 WILLIAM JENKINS D.L.C. NO. 38
 T. 3 N., R. 10 E., W.M.
 CITY OF HOOD RIVER, HOOD RIVER COUNTY, OREGON

HOOD RIVER COUNTY
 SURVEYOR'S OFFICE
 SURVEY NO. 2023009
 FILED: 3/22/2023
 BY: *AB*

PP 2012 04P
 PLAT OF ADAM'S
 PARADISE ACREAGE
 2-A

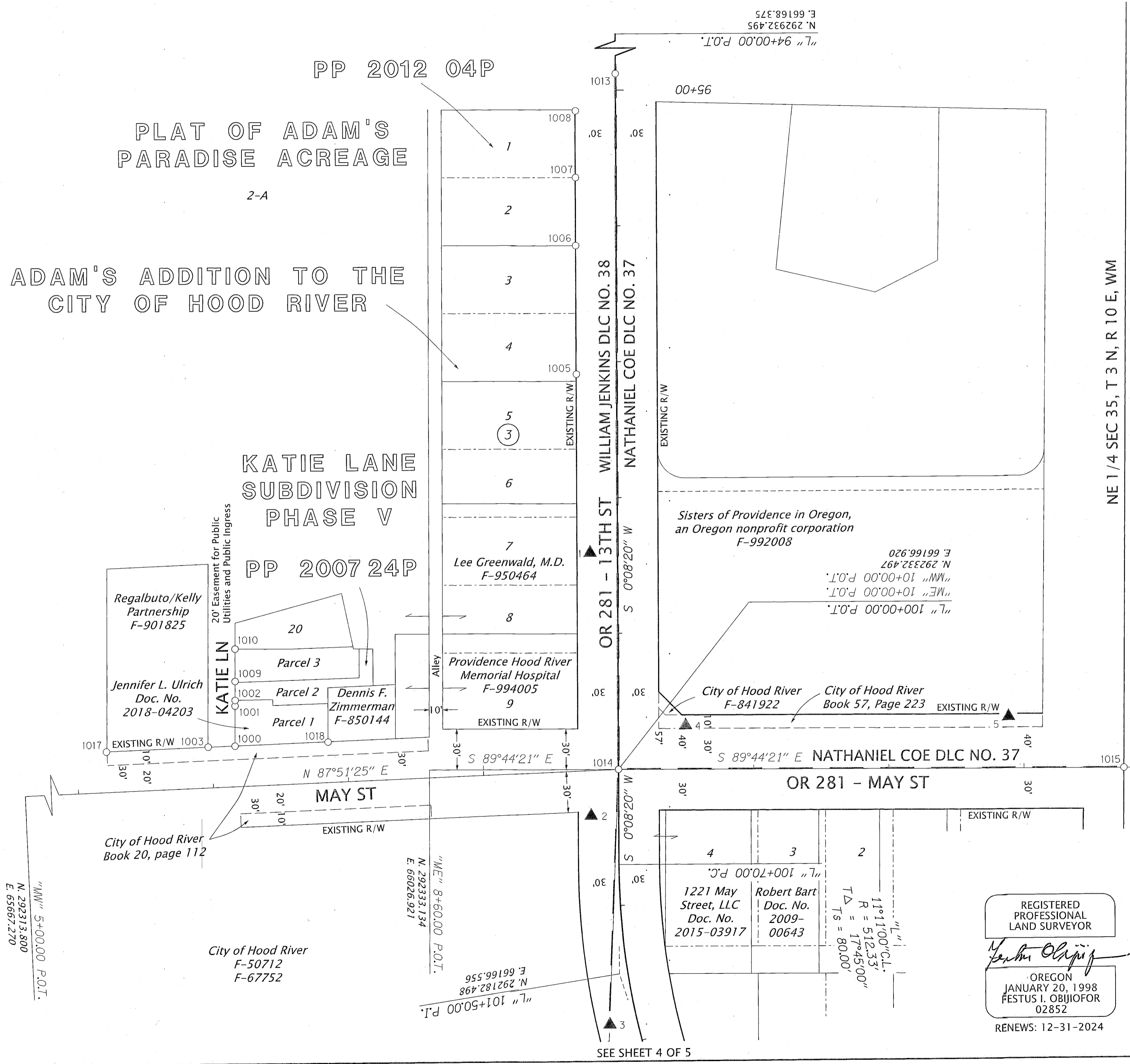
ADAM'S ADDITION TO THE
 CITY OF HOOD RIVER

KATIE LANE
 SUBDIVISION
 PHASE V
 PP 2007 24P



LEGEND

- FOUND MONUMENT
- ★ SET GPS STATION
- ▲ SET NETWORK POINT
- RIGHT OF WAY



NE 1/4 SEC 35, T 3 N., R 10 E, WM
 NW 1/4 SEC 36, T 3 N., R 10 E, WM

OREGON DEPARTMENT OF TRANSPORTATION
 HORIZONTAL CONTROL, RECOVERY AND RETRACEMENT SURVEY
 MAY STREET ELEVATED SIDEWALK REPLACEMENT
 HOOD RIVER HWY NO. 281
 HOOD RIVER COUNTY

ODOT REGION 1 TECH CENTER
 123 N.W. FLANDERS STREET
 PORTLAND, OR 97209-4037 KEY NO. 20331

MARCH 1, 2020
 SCALE: 1" = 50'
 SHEET 3 OF 5

REGISTERED
 PROFESSIONAL
 LAND SURVEYOR

Festus I. Obijiofor

OREGON
 JANUARY 20, 1998
 FESTUS I. OBJIOFOR
 02852

RENEWS: 12-31-2024

"MW" 5+00.00 P.O.T.
 N. 292313.800
 E. 65667.270

City of Hood River
 F-50712
 F-67752

"WE" 8+60.00 P.O.T.
 N. 292333.134
 E. 66026.921

"L" 101+50.00 P.O.T.
 N. 292182.498
 E. 66166.556

"L" 100+00.00 P.O.T.
 "ME" 10+00.00 P.O.T.
 "MW" 10+00.00 P.O.T.
 N. 292332.497
 E. 66166.920

"ME" 15+00.00 P.O.T.
 N. 292330.221
 E. 66666.915

SEE SHEET 4 OF 5


CS# 2023009

N.E. 1/4 SECTION 35 N.W. 1/4 SECTION 36
 NATHANIEL COE D.L.C. NO. 37 WILLIAM JENKINS D.L.C. NO. 38
 T. 3 N., R. 10 E., W.M.
 CITY OF HOOD RIVER, HOOD RIVER COUNTY, OREGON

HOOD RIVER COUNTY
 SURVEYOR'S OFFICE
 SURVEY NO. 2023009
 FILED: 3/22/2023
 BY: BL

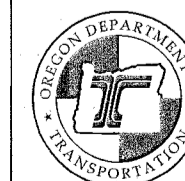
RECOVERED MONUMENT LIST

POINT NO.	OCRS NORTHING	OCRS EASTING	STATION	OFFSET	DATE	DESCRIPTION AND REFERENCE DOCUMENTS
1000	292351.70	65883.26	"MW" 7+17.26	29.80 LT	12/18/19	FOUND 5/8" IRON ROD WITH YELLOW PLASTIC CAP, UNREADABLE, FLUSH IN ASPHALT, KATIE LANE SUBDIVISION PHASE IV
1001	292381.23	65883.48	N/A	N/A	12/18/19	FOUND 5/8" IRON ROD WITH 2" ALUMINUM CAP, PARTIALLY READABLE, STAMPED "KLEIN & AS...", FLUSH IN ASPHALT, ORIGIN UNKNOWN
1002	292385.36	65883.51	N/A	N/A	12/18/19	FOUND 5/8" IRON ROD WITH 2" ALUMINUM CAP, PARTIALLY READABLE, STAMPED "KLEIN & ASSOC...OR LS...", FLUSH IN ASPHALT, CS 2007073/PP 200724P
1003	292351.16	65863.39	"MW" 6+97.38	30.00 LT	12/18/19	FOUND 5/8" IRON ROD WITH YELLOW PLASTIC CAP STAMPED "PLS OR932, PLS WA 22098", DOWN 0.1', CS 2004021
1005	292623.54	66137.91	"L" 97+09.03	29.71 RT	12/18/19	FOUND 1/2" IRON PIPE, DOWN 0.9', ORIGIN UNKNOWN
1006	292718.26	66138.01	"L" 96+14.30	29.84 RT	12/18/19	FOUND 5/8" IRON ROD WITH YELLOW PLASTIC CAP STAMPED "WYEAST SURVEY, PLS 2393", DOWN 0.3', CS 1993045
1007	292768.25	66138.22	"L" 95+64.32	29.75 RT	12/18/19	FOUND 5/8" IRON ROD WITH RED PLASTIC CAP STAMPED "BDC, WA 41954, OR 77685 LS", DOWN 0.3', CS 2012029/PP 201204P
1008	292817.39	66138.42	"L" 95+15.17	29.68 RT	12/18/19	FOUND RED PLASTIC CAP WITH PK NAIL IN EPOXY, FLUSH IN CONCRETE WALK, CS 2012029/PP 201204P
1009	292399.32	65883.63	N/A	N/A	12/18/19	FOUND 5/8" IRON ROD WITH 2" ALUMINUM CAP STAMPED "KLEIN & ASSOC, WA LS 4268, OR LS 39002", FLUSH IN ASPHALT, CS 2007073/PP 200724P
1010	292423.08	65883.77	N/A	N/A	12/18/19	FOUND 5/8" IRON ROD WITH YELLOW PLASTIC CAP, PARTIALLY READABLE, STAMPED "KLEIN & ASSOC LS...", FLUSH IN ASPHALT, CS 2006051/PP 200617P
1012	292300.68	66570.59	"ME" 14+03.81	29.98 RT	01/22/20	FOUND SURVEY NAIL, FLUSH IN ASPHALT, CS 2004085
1013	292844.60	66168.16	"L" 94+87.90	0.00 RT	01/22/20	FOUND STONE WITH BRASS TACK, DOWN 1.2' IN MONUMENT BOX, ORIGIN UNKNOWN, REFERENCED AS CITY MONUMENT NO. 28 (H-2) IN CS 1978034 AND CS 2007032
1014	292332.49	66166.92	"L" 100+00.00	0.00 RT	01/22/20	FOUND STONE WITH MARK, DOWN 1.0' IN MONUMENT BOX, ORIGIN UNKNOWN, REFERENCED AS SW CORNER OF COE DLC NO. 37 AND CITY MONUMENT NO. 27 (E-6) IN ADAM'S ADDITION TO THE CITY OF HOOD RIVER, PLAT OF ADAM'S PARADISE ACREAGE, CS 1978034, CS 1979019, CS 1984067, CS 1990053, CS 2000093 AND CS 2007032
1015	292330.80	66540.86	"ME" 13+73.94	0.00 RT	01/22/20	FOUND STONE WITH MARK, DOWN 0.9' IN MONUMENT BOX, ORIGIN UNKNOWN, REFERENCED AS CITY MONUMENT NO. 15 IN CS 1978034, CS 1984067, CS 1990053, CS 2004085 AND CS 2007032
1016	291723.34	66141.21	N/A	N/A	01/28/20	FOUND 1" IRON PIPE, DOWN 1.2' IN MONUMENT BOX, ORIGIN UNKNOWN, REFERENCED AS EASTERLY SE CORNER OF JENKINS DLC NO. 38 AND CITY MONUMENT K-1 IN CS 1978034, CS 1984062 AND CS 2001057/PP 200120P
1017	292348.17	65788.04	"MW" 6+21.97	29.83 LT	02/04/20	FOUND 1-1/2" AXLE, DOWN 0.2', ORIGIN UNKNOWN, REFERENCED IN CS 1979019, CS 2000093 AND CS 2004021
1018	292354.17	65952.12	"MW" 7+86.16	29.69 LT	02/04/20	FOUND 1/2" IRON ROD WITH YELLOW PLASTIC CAP, STAMPED "KLEIN & ASSOC, PLS 59002", UP 0.6', ORIGIN UNKNOWN, REFERENCED IN CS 1979019, CS 2004021 AND CS 2007073/PP 200724P

REGISTERED
 PROFESSIONAL
 LAND SURVEYOR

 OREGON
 JANUARY 20, 1998
 FESTUS I. OBJIOFOR
 02852
 RENEWS: 12-31-2024

OREGON DEPARTMENT OF TRANSPORTATION

HORIZONTAL CONTROL, RECOVERY AND RETRACEMENT SURVEY
 MAY STREET ELEVATED SIDEWALK REPLACEMENT
 HOOD RIVER HWY NO. 281
 HOOD RIVER COUNTY



ODOT REGION 1 TECH CENTER
 123 N.W. FLANDERS STREET
 PORTLAND, OR 97209-4037 KEY NO. 20331

MARCH 1, 2020
 SCALE: NONE
 SHEET 5 OF 5

CS# 2023009