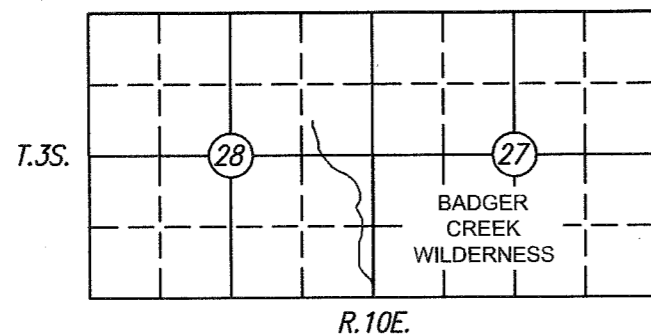


RECORD OF SURVEY

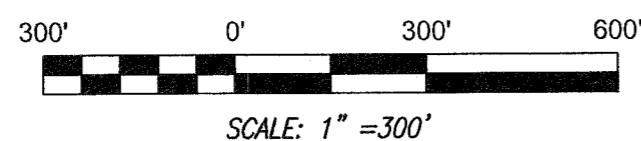
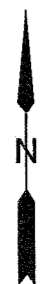
LOCATED IN THE MOUNT HOOD NATIONAL FOREST
 BADGER CREEK WILDERNESS AREA
 WITHIN THE SW 1/4 OF SECTION 27
 AND THE NE 1/4 AND THE SE 1/4 OF SECTION 28,
 T.3 S., R.10 E., W.M.
 HOOD RIVER COUNTY, STATE OF OREGON
 AUGUST 2022



BASIS OF BEARING

BEARINGS SHOWN HEREON ARE OREGON STATE PLANE GRID, NORTH ZONE BEING N.20°06'48"W. BETWEEN AP 279 AND AP 297.

DISTANCES SHOWN HEREON ARE GRID DISTANCES, INTERNATIONAL FEET. TO OBTAIN GROUND DISTANCES, DIVIDE GRID DISTANCES BY THE COMBINED SCALE FACTOR. COMBINED SCALE FACTOR AT AP 297 IS 0.999743936914 AND THE CONVERGENCE ANGLE IS -0°44'35".



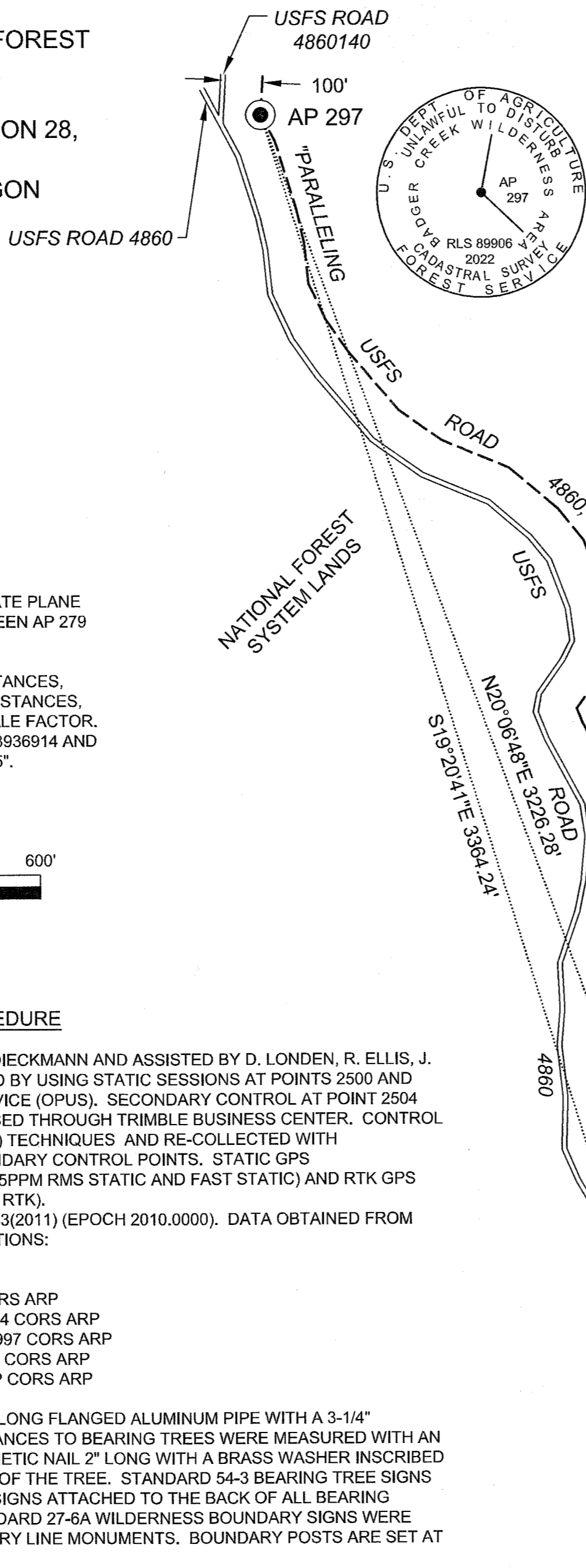
SCALE: 1" = 300'

METHOD AND PROCEDURE

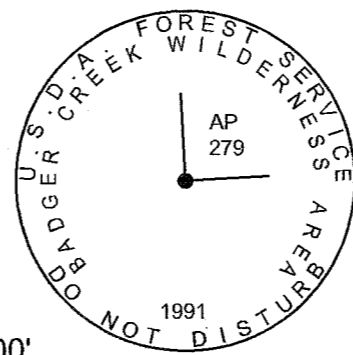
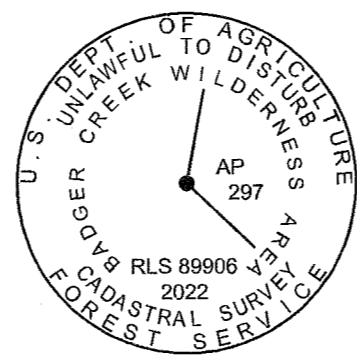
CONTROL FOR THIS PROJECT WAS SET IN AUGUST 2022 BY R. J. DIECKMANN AND ASSISTED BY D. LONDEN, R. ELLIS, J. BALDWIN, C. CLARK AND H. LEE. PRIMARY CONTROL WAS ESTABLISHED BY USING STATIC SESSIONS AT POINTS 2500 AND 2503 AND PROCESSED THROUGH THE ONLINE POSITIONING USER SERVICE (OPUS). SECONDARY CONTROL AT POINT 2504 WAS ESTABLISHED USING FAST STATIC SESSIONS AND POST-PROCESSED THROUGH TRIMBLE BUSINESS CENTER. CONTROL MEASUREMENTS WERE COLLECTED USING REAL TIME KINEMATIC (RTK) TECHNIQUES AND RE-COLLECTED WITH INDEPENDENT INITIALIZATIONS FROM DIFFERENT PRIMARY AND SECONDARY CONTROL POINTS. STATIC GPS MEASUREMENTS WERE PERFORMED WITH TRIMBLE R8S BASE (3MM+0.5PPM RMS STATIC AND FAST STATIC) AND RTK GPS WORK WAS PERFORMED WITH A TRIMBLE R10 ROVER (8MM+1PPM RMS RTK).
 COORDINATES SHOWN ARE OREGON STATE PLANE NORTH, NAD83(2011) (EPOCH 2010.0000). DATA OBTAINED FROM NGS OPUS DERIVED SOLUTIONS UTILIZING THE FOLLOWING CORS STATIONS:

PID	DESIGNATION
DG9893	NWBG ADEPAZ COOP CORS ARP
DH4129	P698 MSH_SESLPEWA2004 CORS ARP
AF9664	GOBS GOBS_PNGA_WA1997 CORS ARP
DP8352	P063 SHANIKO_OR2005 CORS ARP
DE6433	WDBN WOODBURN COOP CORS ARP

THE MONUMENT SET IN THIS SURVEY CONSISTS OF A 2-1/2" x 28" LONG FLANGED ALUMINUM PIPE WITH A 3-1/4" ALUMINUM CAP WITH A MAGNET IN THE CENTER. BEARINGS AND DISTANCES TO BEARING TREES WERE MEASURED WITH AN ELECTRONIC TOTAL STATION, WITH DISTANCES MEASURED TO A MAGNETIC NAIL 2" LONG WITH A BRASS WASHER INSCRIBED "OR PLS 89906" "WA PLS 20100531", AT THE SIDE-CENTER OF THE BASE OF THE TREE. STANDARD 54-3 BEARING TREE SIGNS WERE ATTACHED TO THE FRONT AND 54-9 LAND SURVEY MONUMENT SIGNS ATTACHED TO THE BACK OF ALL BEARING TREES UNLESS LOCATED WITHIN THE WILDERNESS BOUNDARY. STANDARD 27-6A WILDERNESS BOUNDARY SIGNS WERE PLACED ON ALUMINUM POSTS WITHIN 5' OF THE WILDERNESS BOUNDARY LINE MONUMENTS. BOUNDARY POSTS ARE SET AT APPROXIMATE 150' INTERVALS ALONG THE INDICATED LINE.



AP 297
 "A POINT WHICH IS 100 FEET EASTERLY OF AND PERPENDICULAR TO THE CENTERLINE OF USFS ROAD 4860140 AT ITS INTERSECTION WITH USFS ROAD 4860"
 8/24/22
 SET A 2-1/2" x 28" ALUMINUM PIPE MONUMENT WITH A 3-1/4" ALUMINUM CAP, 27" IN THE GROUND, IN A COLLAR OF STONE
 MARKED THE FOLLOWING BEARING TREES:
 • 11" HEMLOCK BEARS N33-3/4"E, 20.6'
 SCRIBED "AP297BCWABT"
 • 12" HEMLOCK BEARS S58"E, 34.8' SCRIBED "X" IN BARK AT BREAST HEIGHT AND "BT" IN A BLAZE AT THE BASE
 DEPOSIT A MAGNET IN A WHITE PLASTIC CASE AND A "GOLDEEN #118" POKÉMON CARD AT THE BASE OF THE MONUMENT



AP 279
 "A POINT WHICH IS 100 FEET EASTERLY AND PERPENDICULAR TO THE CENTERLINE OF USFS ROAD 4860 AND 10 FEET NORTHERLY OF AND PERPENDICULAR TO CENTERLINE OF THREE MILE TRAIL #466"
 FOUND 2-1/2" ALUMINUM PIPE MONUMENT WITH A 3-1/4" ALUMINUM CAP, PROJECTING 3" ABOVE A MOUND OF STONE
 FOUND THE FOLLOWING BEARING TREES:
 • 22" HEMLOCK BEARS N1"E, 26.8' WITH PARTIALLY HEALED BLAZE AND VISIBLE SCRIBE MARKS
 • 23" HEMLOCK BEARS S34"E, 3.4' WITH A PARTIALLY HEALED BLAZE AND VISIBLE SCRIBE MARKS

CORNER OF SECTIONS 27, 28, 33 & 34
 FOUND 2" IRON POST MONUMENT PROJECTING 6" ABOVE GROUND WITH A 2 1/2" BRASS CAP MARKED IN 1938 AS PER THE MANUAL OF INSTRUCTIONS
 FOUND THE FOLLOWING ACCESSORIES:
 • 21" HEMLOCK BEARS N64"E, 22.7' (GLO, NS2"E, 23.8') WITH A HEALED BLAZE
 • 22" NOBLE FIR SNAG BEARS S66"E, 29.0' WITH A HEALED BLAZE
 • 18" HEMLOCK BEARS S30"W, 17.2' WITH A HEALED BLAZE
 • 24" HEMLOCK BEARS N5-1/2"W, 56.1' WITH A HEALED BLAZE
 • A MOUND OF STONE, 2 1/2" DIAMETER, 1 1/2' HIGH, SOUTH 1 1/2'
 MARKED A NEW BEARING TREE:
 • 18" PACIFIC SILVER FIR BEARS S45-1/2"E, 38.4', SCRIBED "T3N R10E S34 BT"

SURVEY REFERENCES

- 1938-39 THE SUBDIVISIONAL LINES OF THE TOWNSHIP WERE SURVEYED BY THE GLO UNDER LEONARD CARTER, PUBLIC LAND SURVEYOR.
- 1991 AP 279 WAS ESTABLISHED BY THE USFS, ADMINISTRATIVELY; INFORMATION ON THIS POSITION IS ON FILE AT THE GIFFORD PINCHOT NATIONAL FOREST HEADQUARTERS.

PURPOSE

THE PURPOSE OF THIS SURVEY IS TO POST AND MONUMENT A PORTION OF AN ADMINISTRATIVE BOUNDARY BETWEEN NATIONAL FOREST SYSTEM LANDS AND A CONGRESSIONALLY DESIGNATED AREA (CDA) KNOWN AS THE "BADGER CREEK WILDERNESS" AS CREATED IN PUBLIC LAW 98-328. THE PORTION OF THE CDA BOUNDARY MARKED HEREIN IS DESCRIBED IN THE OFFICIAL DESCRIPTION (SIGNED 11/20/1987 AND IS ALSO SHOWN ON THE OFFICIAL MAP (DATED SEPTEMBER 1986) AS BEING FROM ANGLE POINT 279 TO ANGLE POINT 297.

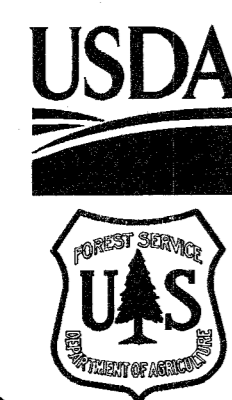
SURVEYOR'S REPORT

THIS PORTION OF THE WILDERNESS BOUNDARY IS DEFINED IN THE BADGER CREEK WILDERNESS AS ANGLE POINTS 279 THROUGH 297, PARALLELING USFS ROAD 4860, 100 FEET EASTERLY OF CENTERLINE. POINT 279 HAD BEEN PREVIOUSLY SET (REF 2) AT THE INTERSECTION OF A LINE BEING 10 FEET NORTHERLY OF AND PERPENDICULAR TO CENTERLINE OF THREE MILE TRAIL #466 AND 100 FEET EASTERLY OF AND PERPENDICULAR TO USFS ROAD 4860. AT ANGLE POINT 297, THE FIRST COURSE FROM THE INTERSECTION OF USFS ROAD 4860 ALONG THE CENTERLINE OF USFS ROAD 4860140 WAS MEASURED AND USED TO CALCULATE THE INTERSECTION OF THE 100 FOOT OFFSET EASTERLY OF SAID ROAD WITH THE 100 FOOT OFFSET EASTERLY OF USFS ROAD 4860. THE CENTERLINE OF USFS ROAD 4860 WAS USED AS THE CONTROLLING BOUNDARY FEATURE, REGARDLESS OF NUMBERED INTERMEDIATE ANGLE POINTS BETWEEN ROAD CALLS AND WAS MARKED USING STANDARD 27-6A SIGNS AFFIXED TO ALUMINUM DELINEATOR POSTS OR TREES AND TREES ON THE BOUNDARY WERE DOUBLE BLAZED.

CONTROL POINTS		
PT #	NORTHING	EASTING
2500	590185.266	7948237.621
2503	581627.021	7935346.972
2504	593031.389	7933735.947
AP 279	587234.047	7933542.717
AP 297	590272.961	7932429.830
SEC. COR.	587098.660	7933544.239

LEGEND

- SET 3-1/2" ALUMINUM CAP ON 2-1/2" x 28" LONG FLANGED ALUMINUM PIPE
- FOUND MONUMENT AS NOTED
- WILDERNESS BOUNDARY SURVEYED AND MARKED
- TIE LINES



UNITED STATES DEPARTMENT OF AGRICULTURE
 FOREST SERVICE- REGION 6
 COLUMBIA LANDS ZONE
 987 McCLELLAN ROAD
 VANCOUVER, WA 98661

REVIEWED BY
Richard DeLeon 12/06/22
 SIGNATURE DATE
 I CERTIFY THAT THIS SURVEY WAS PERFORMED AT THE REQUEST OF THE MOUNT HOOD NATIONAL FOREST SUPERVISOR
Meta J. Gaarden 12/7/22
 SIGNATURE DATE

REGISTERED PROFESSIONAL LAND SURVEYOR
Erielle Lamb
 OREGON
 MAY 16, 2015
 ERIELLE F. LAMB
 89906
 EXPIRES: 12/31/2022

DRAWN BY: RJD
 CALC BY: RJD
 CHECKED BY: EFL

SHEET 1 OF 1

CS# 2022068