

**DEED REFERENCES:**

- 1) GRANTOR: MERDITH LOCKE GALLIGAN  
GRANTEE: PHYLLIS LOUISE GALLIGAN  
DOC NO: 883037  
DATE: 12/29/1988
- 2) GRANTOR: IRWIN SCHLEGEL  
GRANTEE: UNITED STATES OF AMERICA  
DOC NO: 890299  
DATE: 2/6/1989
- 3) GRANTOR: JEFFREY LANCE  
GRANTEE: CAROL LANCE  
DOC NO: 890340  
DATE: 2/13/1989
- 4) GRANTOR: TED F. ARONSON  
GRANTEE: LAURA JEAN ARONSON  
DOC NO: 891758  
DATE: 6/27/1989
- 5) GRANTOR: RAYMOND M. GALLIGAN  
GRANTEE: PATRICIA J. GALLIGAN  
DOC NO: 910926  
DATE: 4/24/1991

**G.L.O. REFERENCES (G.L.O.#):**

- 1) (1860) GENERAL LAND OFFICE PLAT AND NOTES FOR T. 3 N., R. 10 E., W.M.
- 2) (1878) GENERAL LAND OFFICE PLAT AND NOTES FOR T. 2 N., R. 10 E., W.M.
- 3) (1880) GENERAL LAND OFFICE PLAT AND NOTES FOR T. 3 N., R. 9 E., W.M.
- 4) (1880) GENERAL LAND OFFICE PLAT AND NOTES FOR T. 2 N., R. 9 E., W.M.

**SURVEY REFERENCES (S#):**

- 1) (1977) CS1977109, HOOD RIVER COUNTY SURVEY OFFICE, KLEIN SURVEY FOR FORESTRY DEPARTMENT
- 2) (1978) CS1978035, BISHOP SURVEYING, BISHOP SURVEY FOR HAROLD HOOVER
- 3) (1980) CS1980064, HOOD RIVER COUNTY PUBLIC WORKS, KLEIN SURVEY FOR U.S.F.S.
- 4) (1984) CS1984060, D.L.C. SURVEYING, CRON SURVEY FOR PALLADEAN LAND COMPANY/JAMES & BARBAR LAGO
- 5) (1985) CS1985058, HOOD RIVER COUNTY, RICHARD ARNOLD SURVEY
- 6) (1990) CS1990057, HOOD RIVER COUNTY, RICHARD ARNOLD SURVEY FOR HOOD RIVER COUNTY FORESTRY
- 7) (1999) CS1999099, HOOD RIVER COUNTY SURVEY OFFICE, RICHARD ARNOLD CADASTRAL SURVEY
- 8) (2012) CS2012017, KLEIN AND ASSOCIATES, INC., KLEIN SURVEY FOR HOOD RIVER COUNTY FORESTRY

**EQUIPMENT LIST:**

2018 GMC SIERRA 2500HD SURVEY TRUCK  
 2 TRIMBLE R8S GNSS RECEIVER'S  
 2 TRIMBLE R12 GNSS RECEIVER'S  
 2 TRIMBLE S7 3" TOTAL STATIONS  
 WARREN KNIGHT STAFF COMPASS WITH JACOB STAFF (MAGNETIC DECLINATION=15° EAST)  
 2 TRIMBLE TDL 450HX 35-WATT RADIOS  
 2 TRIMBLE TSC3 DATA COLLECTORS WITH TRIMBLE ACCESS SOFTWARE  
 AUTODESK CIVIL 3D 2020  
 TRIMBLE BUSINESS CENTER  
 STAR-NET LEAST SQUARES ADJUSTMENT SOFTWARE

**CONTROL PROCEDURE:**

A TRIMBLE R8S GNSS BASE RECEIVER WAS USED TO COLLECT OVER 8 HOURS OF STATIC DATA ON THE PRIMARY CONTROL POINTS 121, 122, 123 AND 159. THE STATIC DATA WAS THEN POST PROCESSED USING THE NATIONAL GEODETIC SURVEY ONLINE POSITIONING USER SERVICE (OPUS) AND THE FOLLOWING PID NUMBERS WERE PUBLISHED FOR THE PRIMARY CONTROL:  
 -BBHC25: MITCHELL-3  
 -BBHC26: MITCHELL-4  
 -BBHC28: MITCHELL-5  
 -BBHF28: MITCHELL-6  
 THE SECONDARY CONTROL WAS ESTABLISHED BY USING A TRIMBLE R8S GNSS BASE RECEIVER OPERATING IN A REAL TIME KINEMATIC (RTK) MODE AND SET ON THE PRIMARY OPUS CONTROL WHILE TRANSMITTING REAL TIME CORRECTIONS TO A TRIMBLE R12 GNSS RECEIVER ALSO OPERATING IN A REAL TIME KINEMATIC (RTK) MODE. IN AREAS OF MINIMAL TREE CANOPY THE MONUMENTS WERE TIED DIRECTLY USING THE TRIMBLE R12 GNSS RECEIVER WHILE RECEIVING CORRECTIONS FROM PRIMARY CONTROL POINTS. IN AREAS WHERE THE TREE CANOPY WAS TOO DENSE FOR USING THE TRIMBLE R12 GNSS RECEIVER (RTK), A CLOSED LOOP TRAVERSE WAS RAN OFF OF THE SECONDARY CONTROL USING A TRIMBLE S7 3" TOTAL STATION. EACH CONTROL TRAVERSE WAS BALANCED USING STAR-NET LEAST SQUARES ADJUSTMENT SOFTWARE.

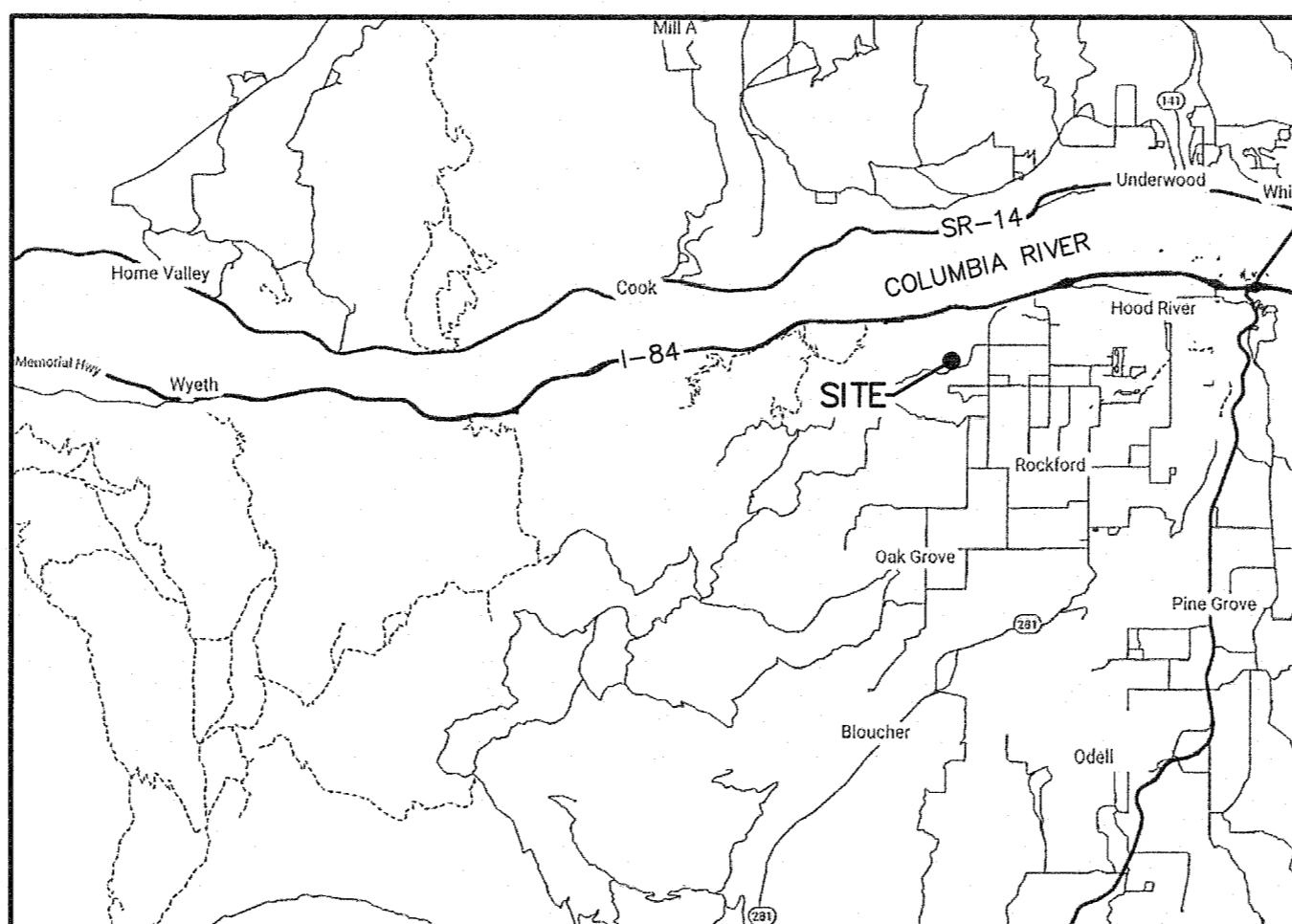
**FOREST SERVICE APPROVAL**

EXAMINED AND ACCEPTED FOR THE U.S. FOREST SERVICE THIS 29<sup>th</sup> DAY OF MARCH, 2022.  
*Eileen Duro* 3/29/2022  
 CONTRACTING OFFICER REPRESENTATIVE DATE

I CERTIFY THAT THIS WORK WAS PERFORMED AT THE REQUEST OF THE COLUMBIA RIVER GORGE NATIONAL SCENIC AREA:

*Dennis W. Wang* 4-8-2022  
 FOREST SUPERVISOR/AREA MANAGER DATE

**VICINITY MAP  
NOT TO SCALE**



**LEGEND:**

- ( ) INDICATES RECORD DATA
- PIN INDICATES PARCEL IDENTIFICATION NUMBER
- YPC INDICATES YELLOW PLASTIC CAP
- BT BEARING TREE
- LSM INDICATES "LAND SURVEY MONUMENT" SIGN 54-9
- CH INDICATES CHAIN
- H.R.C. INDICATES HOOD RIVER COUNTY
- G.L.O. INDICATES GENERAL LAND OFFICE
- BPA INDICATES BONNEVILLE POWER ADMINISTRATION
- USACE INDICATES US ARMY CORPS. OF ENGINEERS
- NFSL INDICATES NATIONAL FOREST SYSTEM LANDS
- INDICATES MONUMENT FOUND AS DESCRIBED ON SHEETS 13-15
- INDICATES CALCULATED POSITION
- ⊗ INDICATES 3-1/4" STANDARD USDA FOREST SERVICE ALUMINUM MONUMENT, SET (SEE COORDINATE TABLE AND DETAIL ON SHEET 15)
- △ INDICATES PROJECT CONTROL POINT
- //— INDICATES POSTED AND MAINTAINED BOUNDARY LINES
- x-x- INDICATES FENCE LINE
- CRK— INDICATES CENTERLINE OF CREEK
- - - - - INDICATES EDGE OF GRAVEL ROAD

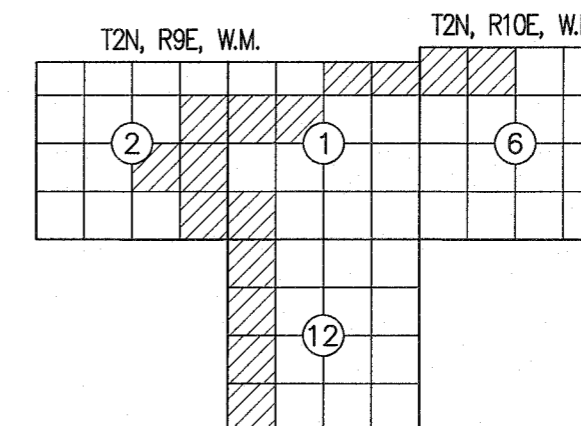


REGISTERED PROFESSIONAL LAND SURVEYOR  
*Daniel A. Renton*  
 OREGON  
 JUNE 30, 1997  
 DANIEL A. RENTON  
 2830  
 Expires 12-31-2022

**RECORD OF SURVEY**

MARK O HATFIELD WILDERNESS AND GORGE FACE ADDITION BOUNDARY CADASTRAL SURVEY IN THE COLUMBIA RIVER GORGE NATIONAL SCENIC AREA LOCATED IN A PORTION OF GOVT. LOTS 3 & 4 OF SECTION 6, T. 2 N., R. 10 E., W.M. AND IN PORTIONS OF GOVT. LOTS 1, 2, 3 & 4, THE SW 1/4 OF THE SW 1/4 AND THE NW 1/4 OF SECTION 1, THE SE 1/4 OF THE NE 1/4 AND THE SE 1/4 OF SECTION 2 AND THE NW 1/4 AND THE SW 1/4 OF SECTION 12 T. 2 N., R. 9 E., W.M., HOOD RIVER COUNTY, OREGON TASK ORDER NO. 1204T020F0039

HOOD RIVER COUNTY SURVEYORS OFFICE  
 SURVEY NO. 2022-022  
 FILED DATE: 4/20/2022  
 BY: RA



**SHEET INDEX**

SHEET 1	VICINITY MAP, REFERENCES, EQUIPMENT LIST, CONTROL PROCEDURE AND CERTIFICATES
SHEETS 2	SHEET INDEX
SHEETS 3	CONTROL DIAGRAM AND TABLE
SHEETS 4-12	SITE DETAILS
SHEETS 13-14	CORNER HISTORY
SHEET 15	CORNER HISTORY AND MONUMENT TABLES
SHEET 16	FOUND AND SET MONUMENT DETAILS
SHEET 17	NARRATIVE

THE GPS CONTROL POINTS SHOWN HEREIN WERE ESTABLISHED BY COLLECTING RAW DATA AND POST PROCESSING USING ONLINE POSITIONING USER SERVICE (OPUS). THE PUBLISHED GPS CONTROL DATA SHEETS CAN BE FOUND AT: WWW.NGS.NOAA.GOV/OPUS/VIEW.JSP (SHARED SOLUTIONS INTERACTIVE MAP) A FIELD TRAVERSE WAS PERFORMED USING A THREE SECOND TOTAL STATION. ALL CORNERS NOTED AS FOUND WERE VISITED BETWEEN OCTOBER 2020 AND APRIL 2021.

**BASIS OF BEARING:** N 02°23'17" E ALONG THE CONTROL LINE BETWEEN OPUS SHARED SOLUTIONS PID BBHC26 (MITCHELL 4) AND PID BBHF28 (MITCHELL 6) NAD 83(2011)(EPOCH 2010.0000), OREGON STATE PLANE COORDINATE SYSTEM, NORTH ZONE, INTERNATIONAL FEET.  
 MEAN CONVERGENCE ANGLE -00°47'57"  
 MEAN COMBINED SCALE FACTOR 0.99985773  
 THE DISTANCES SHOWN HEREIN ARE GRID, TO OBTAIN GROUND DISTANCES DIVIDE THE GRID DISTANCES BY THE COMBINED SCALE FACTOR OF 0.99985773 (0.751' PER MILE/0.014' PER 100')

**SURVEYOR'S CERTIFICATE**

THIS MAP CORRECTLY REPRESENTS A SURVEY MADE BY ME OR UNDER MY DIRECTION IN CONFORMANCE WITH THE REQUIREMENTS OF THE SURVEY RECORDING ACT AT THE REQUEST OF USDA FOREST SERVICE, IN JUNE 2020.

*Daniel A. Renton* 3/29/2022  
 DANIEL ADOLPH RENTON, PROFESSIONAL LAND SURVEYOR, LS# 2830

MINISTER AND GLAESER SURVEYING, INC. MAKES NO WARRANTIES AS TO MATTERS OF UNWRITTEN TITLE SUCH AS ADVERSE POSSESSION, ACQUIESCENCE, ESTOPPEL, ETC.

MINISTER-GLAESER SURVEYING INC.  
 2200 E. EVERGREEN BLVD.  
 VANCOUVER, WA 98661  
 (360) 694-3313

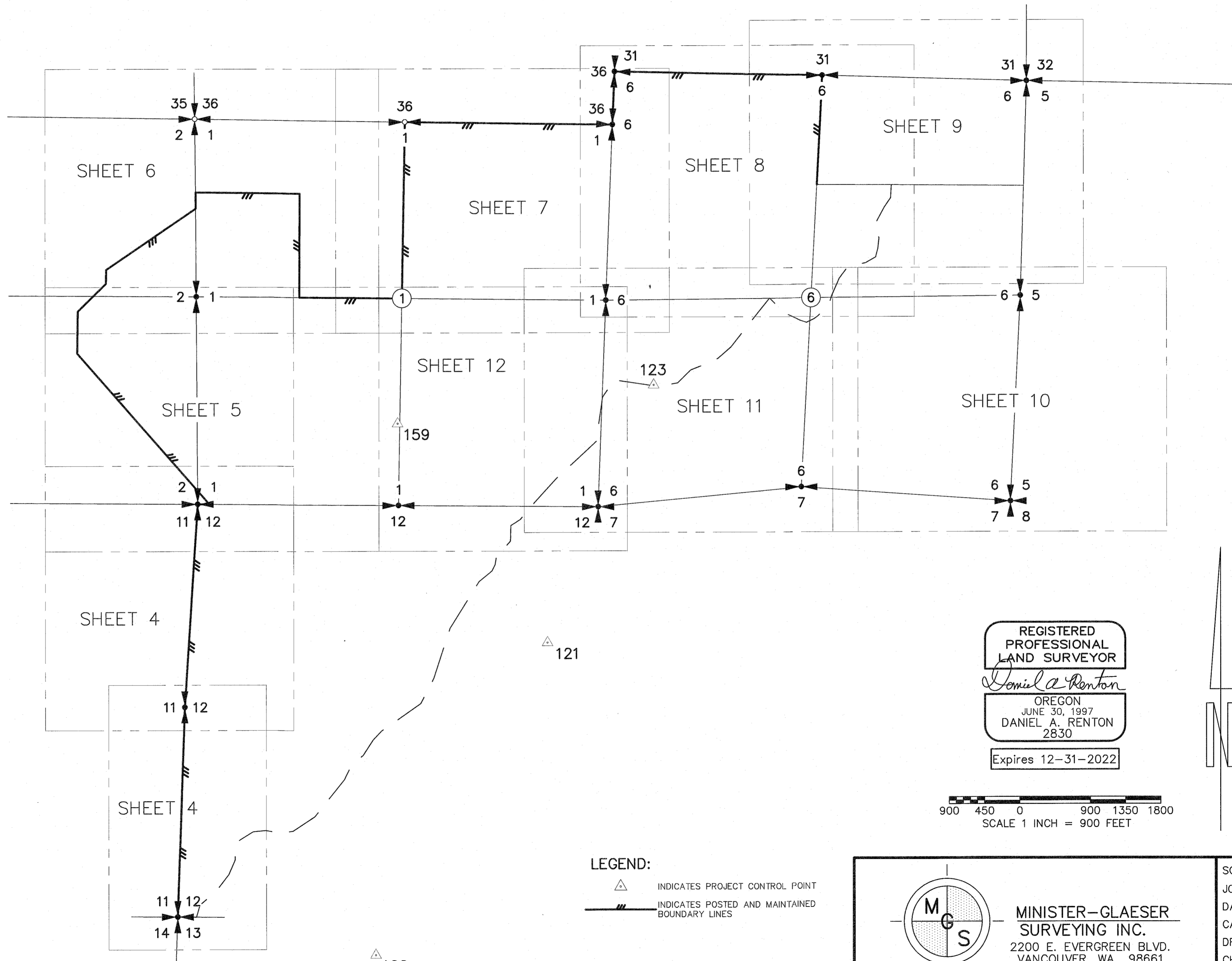
SCALE: N/A  
 JOB NO. 20-178  
 DATE: 3/29/2022  
 CALC BY: DAR  
 DRAWN BY: RDH  
 CHECKED BY: DAR  
 SHEET 1 OF 17

CS# 2022022

# RECORD OF SURVEY

HOOD RIVER COUNTY  
SURVEYORS OFFICE  
SURVEY NO. 2022 022  
FILED DATE: 4/20/2022  
BY: ml

MARK O HATFIELD WILDERNESS AND GORGE FACE ADDITION  
BOUNDARY CADASTRAL SURVEY IN THE  
COLUMBIA RIVER GORGE NATIONAL SCENIC AREA  
LOCATED IN A PORTION OF GOVT. LOTS 3 & 4 OF  
SECTION 6, T. 2 N., R. 10 E., W.M. AND IN PORTIONS  
OF GOVT. LOTS 1, 2, 3 & 4, THE SW 1/4 OF THE SW 1/4  
AND THE NW 1/4 OF SECTION 1, THE SE 1/4 OF  
THE NE 1/4 AND THE SE 1/4 OF SECTION 2  
AND THE NW 1/4 AND THE SW 1/4 OF SECTION 12  
T. 2 N., R. 9 E., W.M., HOOD RIVER COUNTY, OREGON  
TASK ORDER NO. 1204T020F0039



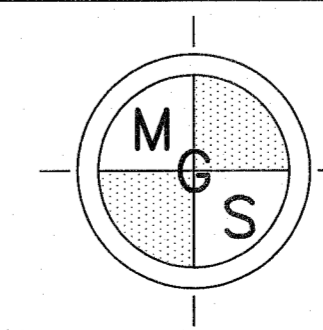
REGISTERED  
PROFESSIONAL  
LAND SURVEYOR

*Daniel A. Renton*  
OREGON  
JUNE 30, 1997  
DANIEL A. RENTON  
2830

Expires 12-31-2022

900 450 0 900 1350 1800  
SCALE 1 INCH = 900 FEET

LEGEND:  
△ INDICATES PROJECT CONTROL POINT  
--- INDICATES POSTED AND MAINTAINED BOUNDARY LINES



MINISTER-GLAESER  
SURVEYING INC.  
2200 E. EVERGREEN BLVD.  
VANCOUVER, WA 98661  
(360) 694-3313

SCALE: 1"=900'  
JOB NO. 20-178  
DATE: 3/29/2022  
CALC BY: DAR  
DRAWN BY: RDH  
CHECKED BY: DAR  
SHEET 2 OF 17

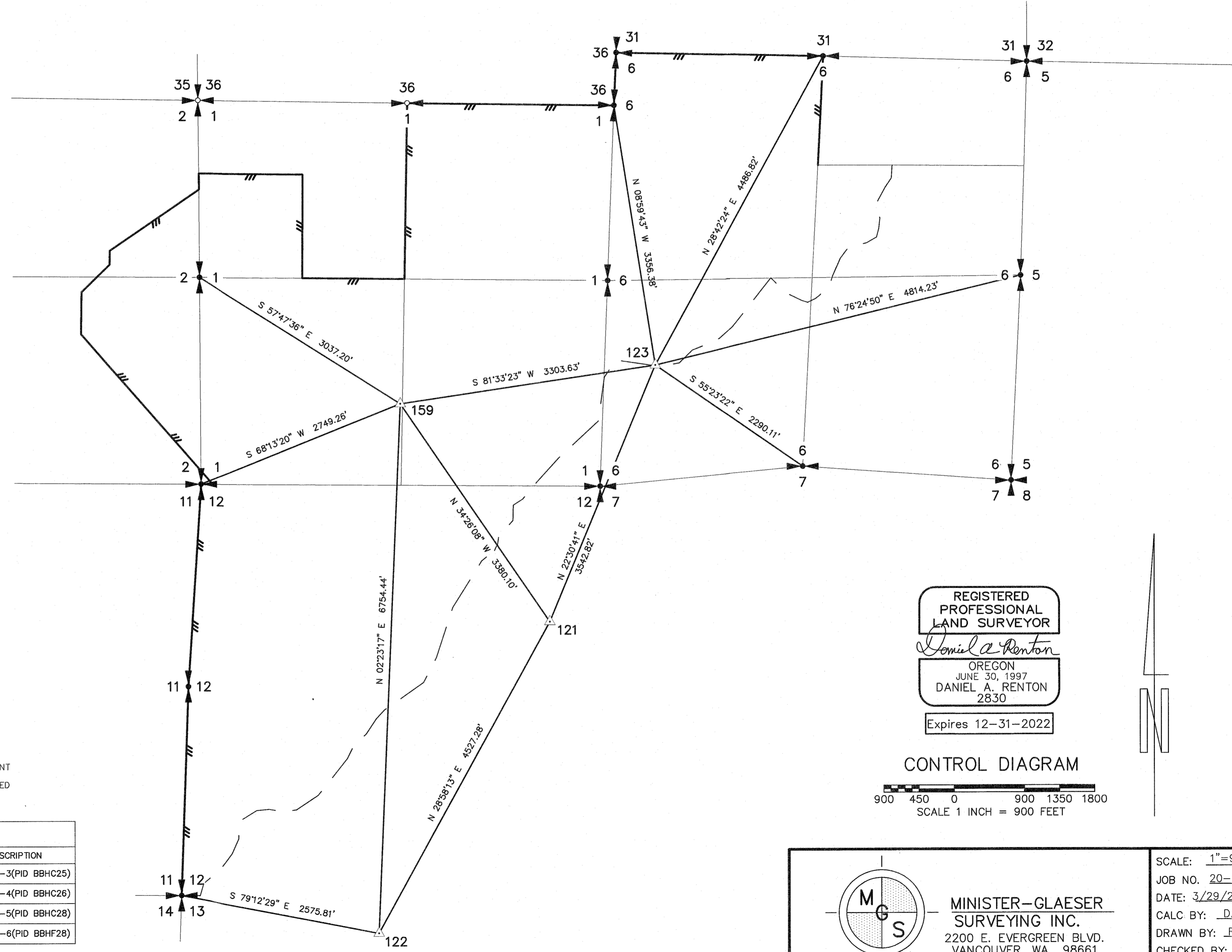
DWG FILE: 20178S-WILDERNESS.DWG

CS# 2022 022

# RECORD OF SURVEY

MARK O HATFIELD WILDERNESS AND GORGE FACE ADDITION  
 BOUNDARY CADASTRAL SURVEY IN THE  
 COLUMBIA RIVER GORGE NATIONAL SCENIC AREA  
 LOCATED IN A PORTION OF GOVT. LOTS 3 & 4 OF  
 SECTION 6, T. 2 N., R. 10 E., W.M. AND IN PORTIONS  
 OF GOVT. LOTS 1, 2, 3 & 4, THE SW 1/4 OF THE SW 1/4  
 AND THE NW 1/4 OF SECTION 1, THE SE 1/4 OF  
 THE NE 1/4 AND THE SE 1/4 OF SECTION 2  
 AND THE NW 1/4 AND THE SW 1/4 OF SECTION 12  
 T. 2 N., R. 9 E., W.M., HOOD RIVER COUNTY, OREGON  
 TASK ORDER NO. 1204T020F0039

HOOD RIVER COUNTY  
 SURVEYORS OFFICE  
 SURVEY NO. 2022-022  
 FILED DATE: 4/20/2022  
 BY: MA



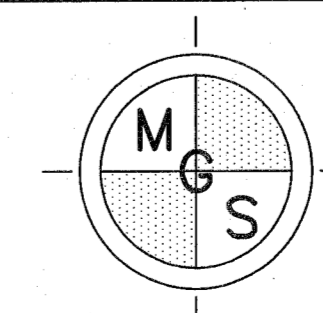
**LEGEND:**

- INDICATES PROJECT CONTROL POINT
- INDICATES POSTED AND MAINTAINED BOUNDARY LINES

CONTROL TABLE			
POINT NO.	NORTHING	EASTING	DESCRIPTION
121	733593.44	7913310.43	MITCHELL-3(PID BBHC25)
122	729632.65	7911117.62	MITCHELL-4(PID BBHC26)
123	736866.31	7914666.87	MITCHELL-5(PID BBHC28)
159	736381.22	7911399.05	MITCHELL-6(PID BBHF28)

REGISTERED  
 PROFESSIONAL  
 LAND SURVEYOR  
*Daniel A. Renton*  
 OREGON  
 JUNE 30, 1997  
 DANIEL A. RENTON  
 2830  
 Expires 12-31-2022

CONTROL DIAGRAM  
 900 450 0 900 1350 1800  
 SCALE 1 INCH = 900 FEET



MINISTER-GLAESER  
 SURVEYING INC.  
 2200 E. EVERGREEN BLVD.  
 VANCOUVER, WA 98661  
 (360) 694-3313

SCALE: 1"=900'  
 JOB NO. 20-178  
 DATE: 3/29/2022  
 CALC BY: DAR  
 DRAWN BY: RDH  
 CHECKED BY: DAR  
 SHEET 3 OF 17

DWG FILE: 20178S-WILDERNESS.DWG

CS# 2022022

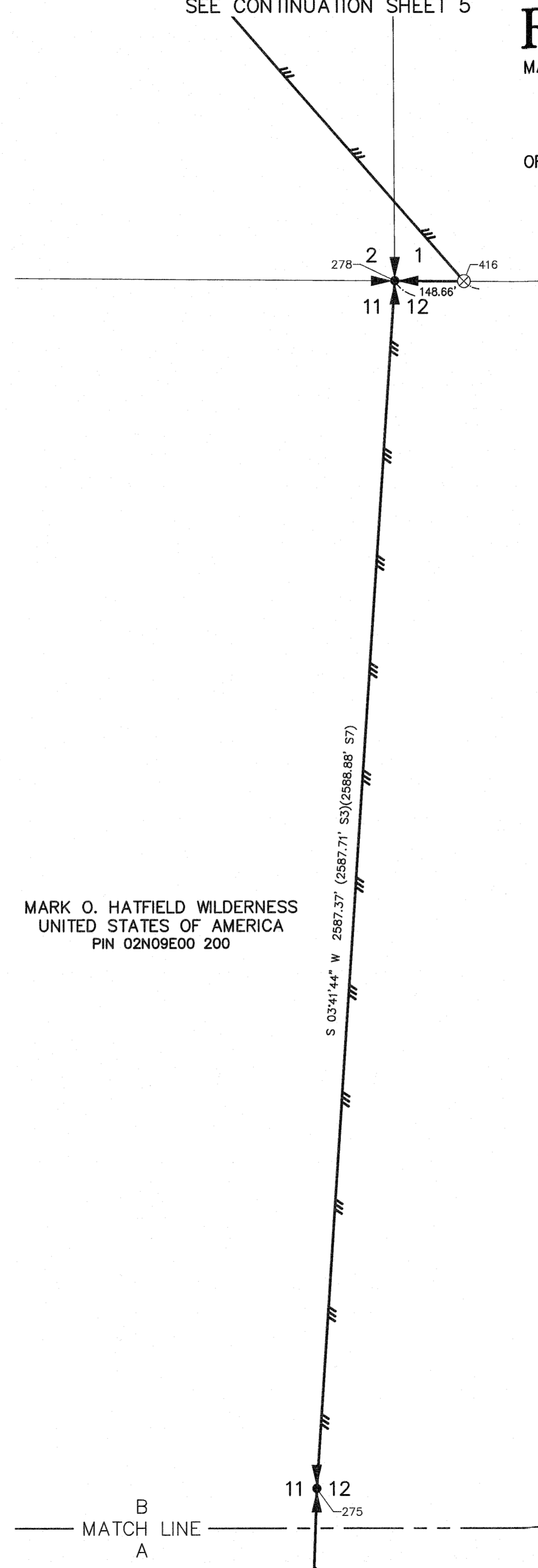
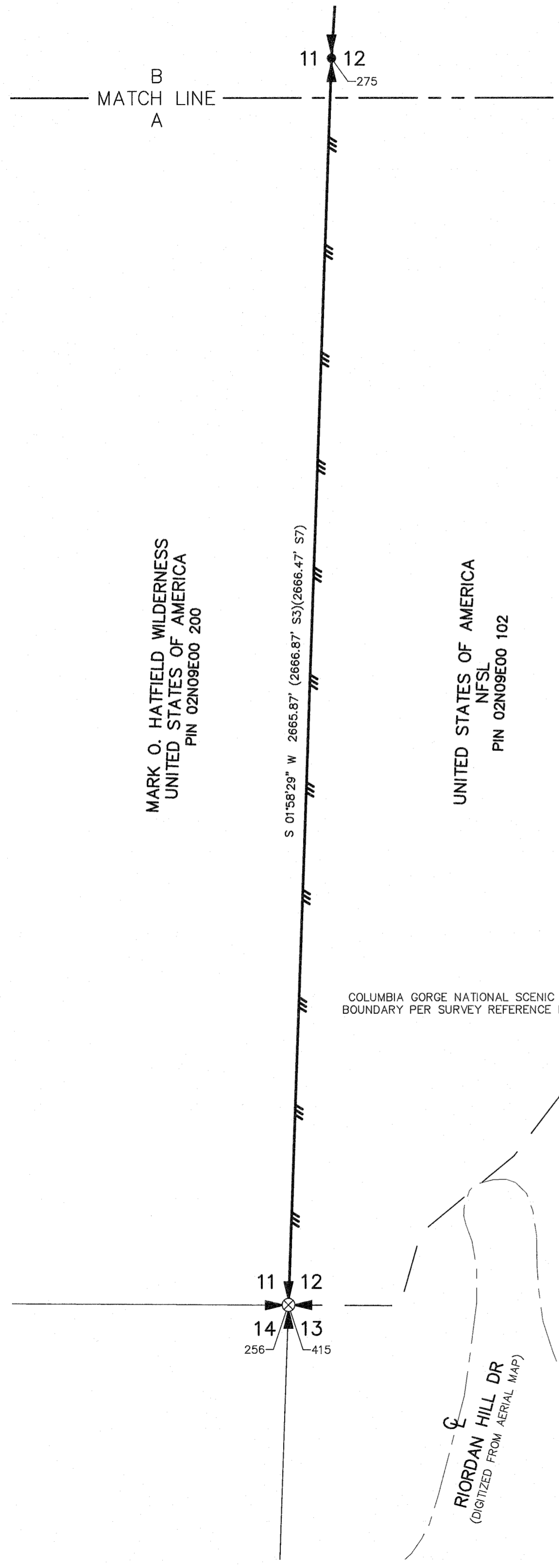
SEE CONTINUATION SHEET 5

# RECORD OF SURVEY

MARK O HATFIELD WILDERNESS AND GORGE FACE ADDITION  
BOUNDARY CADASTRAL SURVEY IN THE  
COLUMBIA RIVER GORGE NATIONAL SCENIC AREA  
LOCATED IN A PORTION OF GOVT. LOTS 3 & 4 OF  
SECTION 6, T. 2 N., R. 10 E., W.M. AND IN PORTIONS  
OF GOVT. LOTS 1, 2, 3 & 4, THE SW 1/4 OF THE SW 1/4  
AND THE NW 1/4 OF SECTION 1, THE SE 1/4 OF  
THE NE 1/4 AND THE SE 1/4 OF SECTION 2  
AND THE NW 1/4 AND THE SW 1/4 OF SECTION 12  
T. 2 N., R. 9 E., W.M., HOOD RIVER COUNTY, OREGON  
TASK ORDER NO. 1204T020F0039

HOOD RIVER COUNTY  
SURVEYORS OFFICE  
SURVEY NO. CS# 2022-022  
FILED DATE: 4/20/2022  
BY: RDH

2414.81'  
N 89°34'47" W 2563.47' (2548.16' S1)(2547.79' S7)



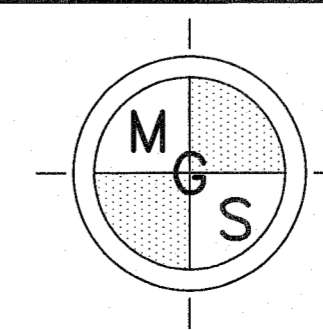
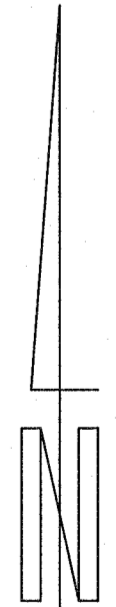
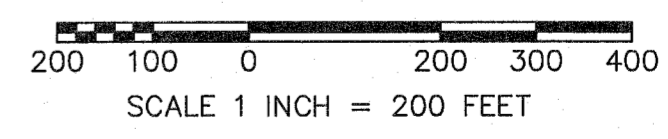
UNITED STATES OF AMERICA  
NFSL  
PIN 02N09E00 102

REGISTERED  
PROFESSIONAL  
LAND SURVEYOR

*Daniel A. Renton*

OREGON  
JUNE 30, 1997  
DANIEL A. RENTON  
2830

Expires 12-31-2022



MINISTER-GLAESER  
SURVEYING INC.  
2200 E. EVERGREEN BLVD.  
VANCOUVER, WA 98661  
(360) 694-3313

SCALE: 1"=200'  
JOB NO. 20-178  
DATE: 3/29/2022  
CALC BY: DAR  
DRAWN BY: RDH  
CHECKED BY: DAR  
SHEET 4 OF 17

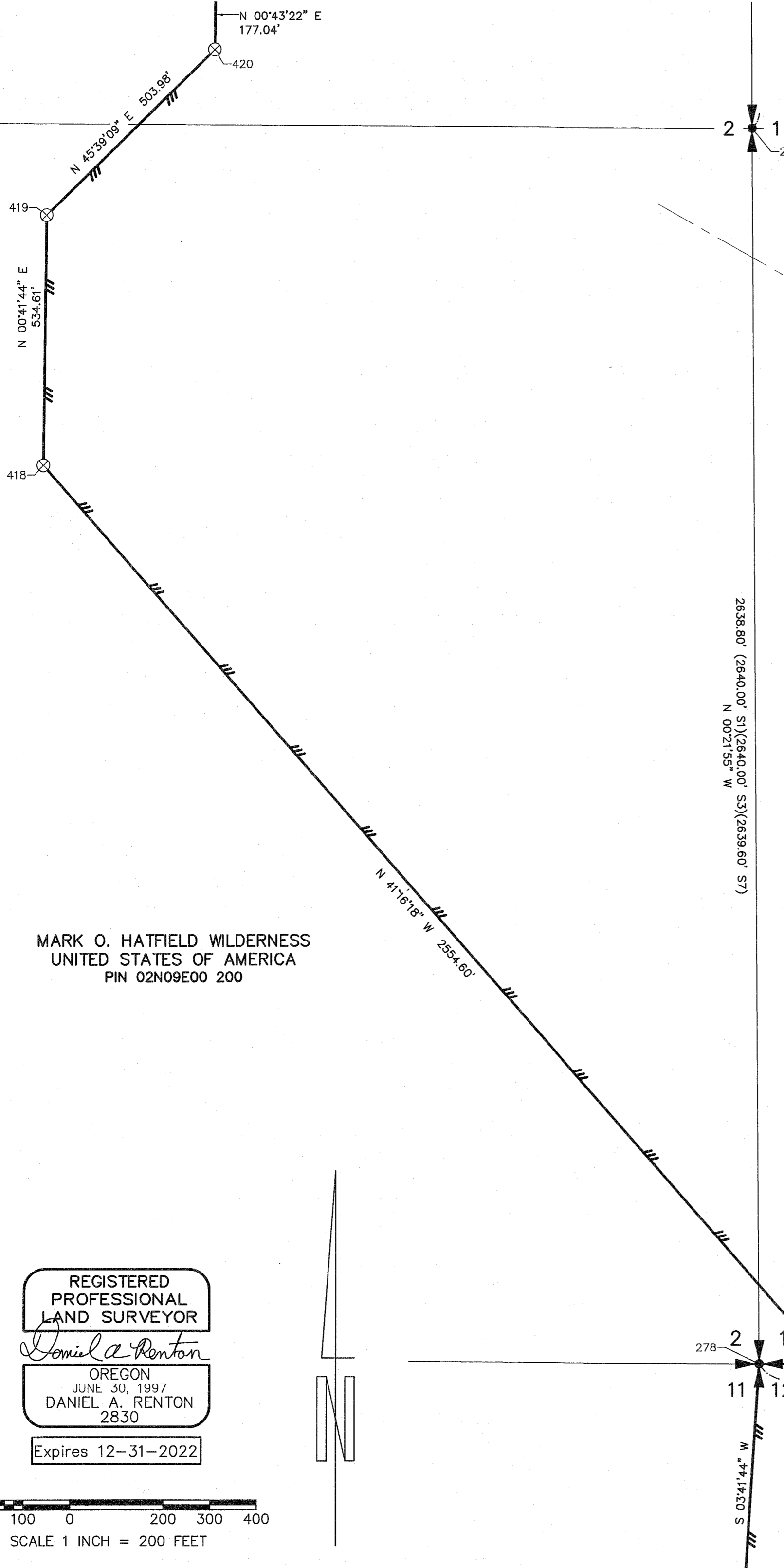
CS# 2022-022

SEE CONTINUATION SHEET 6

# RECORD OF SURVEY

HOOD RIVER COUNTY  
SURVEYORS OFFICE  
SURVEY NO. 2022022  
FILED DATE: 4/20/2022  
BY: BA

MARK O HATFIELD WILDERNESS AND GORGE FACE ADDITION  
BOUNDARY CADASTRAL SURVEY IN THE  
COLUMBIA RIVER GORGE NATIONAL SCENIC AREA  
LOCATED IN A PORTION OF GOVT. LOTS 3 & 4 OF  
SECTION 6, T. 2 N., R. 10 E., W.M. AND IN PORTIONS  
OF GOVT. LOTS 1, 2, 3 & 4, THE SW 1/4 OF THE SW 1/4  
AND THE NW 1/4 OF SECTION 1, THE SE 1/4 OF  
THE NE 1/4 AND THE SE 1/4 OF SECTION 2  
AND THE NW 1/4 AND THE SW 1/4 OF SECTION 12  
T. 2 N., R. 9 E., W.M., HOOD RIVER COUNTY, OREGON  
TASK ORDER NO. 1204T020F0039



UNITED STATES OF AMERICA  
NFSL  
PIN 02N09E00 102

MARK O. HATFIELD WILDERNESS  
UNITED STATES OF AMERICA  
PIN 02N09E00 200

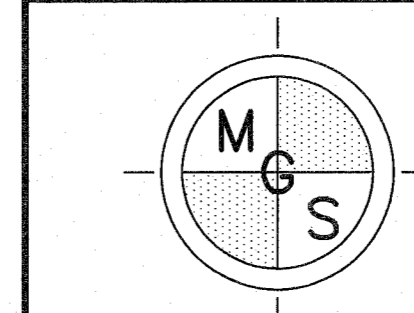
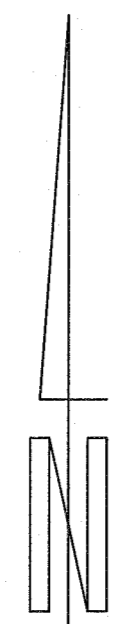
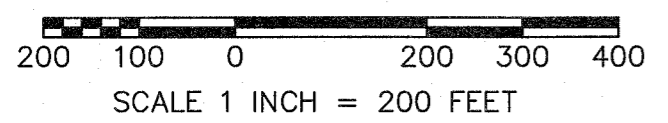
PERHAM CREEK ROAD  
(DIGITIZED FROM AERIAL MAP)

REGISTERED  
PROFESSIONAL  
LAND SURVEYOR

*Daniel A. Renton*

OREGON  
JUNE 30, 1997  
DANIEL A. RENTON  
2830

Expires 12-31-2022



MINISTER-GLAESER  
SURVEYING INC.  
2200 E. EVERGREEN BLVD.  
VANCOUVER, WA 98661  
(360) 694-3313

SCALE: 1"=200'  
JOB NO. 20-178  
DATE: 3/29/2022  
CALC BY: DAR  
DRAWN BY: RDH  
CHECKED BY: DAR  
SHEET 5 OF 17

SEE CONTINUATION SHEET 4

SEE CONTINUATION SHEET 12

DWG FILE: 20178S-WILDERNESS.DWG

CS# 2022 022

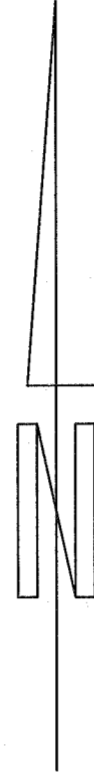
# RECORD OF SURVEY

HOOD RIVER COUNTY  
SURVEYORS OFFICE  
SURVEY NO. 2022 022  
FILED DATE: 4/20/2022  
BY: AS

MARK O HATFIELD WILDERNESS AND GORGE FACE ADDITION  
BOUNDARY CADASTRAL SURVEY IN THE  
COLUMBIA RIVER GORGE NATIONAL SCENIC AREA  
LOCATED IN A PORTION OF GOVT. LOTS 3 & 4 OF  
SECTION 6, T. 2 N., R. 10 E., W.M. AND IN PORTIONS  
OF GOVT. LOTS 1, 2, 3 & 4, THE SW 1/4 OF THE SW 1/4  
AND THE NW 1/4 OF SECTION 1, THE SE 1/4 OF  
THE NE 1/4 AND THE SE 1/4 OF SECTION 2  
AND THE NW 1/4 AND THE SW 1/4 OF SECTION 12  
T. 2 N., R. 9 E., W.M., HOOD RIVER COUNTY, OREGON  
TASK ORDER NO. 1204T020F0039

REGISTERED  
PROFESSIONAL  
LAND SURVEYOR  
*Daniel A. Renton*  
OREGON  
JUNE 30, 1997  
DANIEL A. RENTON  
2830  
Expires 12-31-2022

200 100 0 200 300 400  
SCALE 1 INCH = 200 FEET



35 36  
2 1

T. 3 N. R. 9 E.  
T. 2 N. R 9 E.

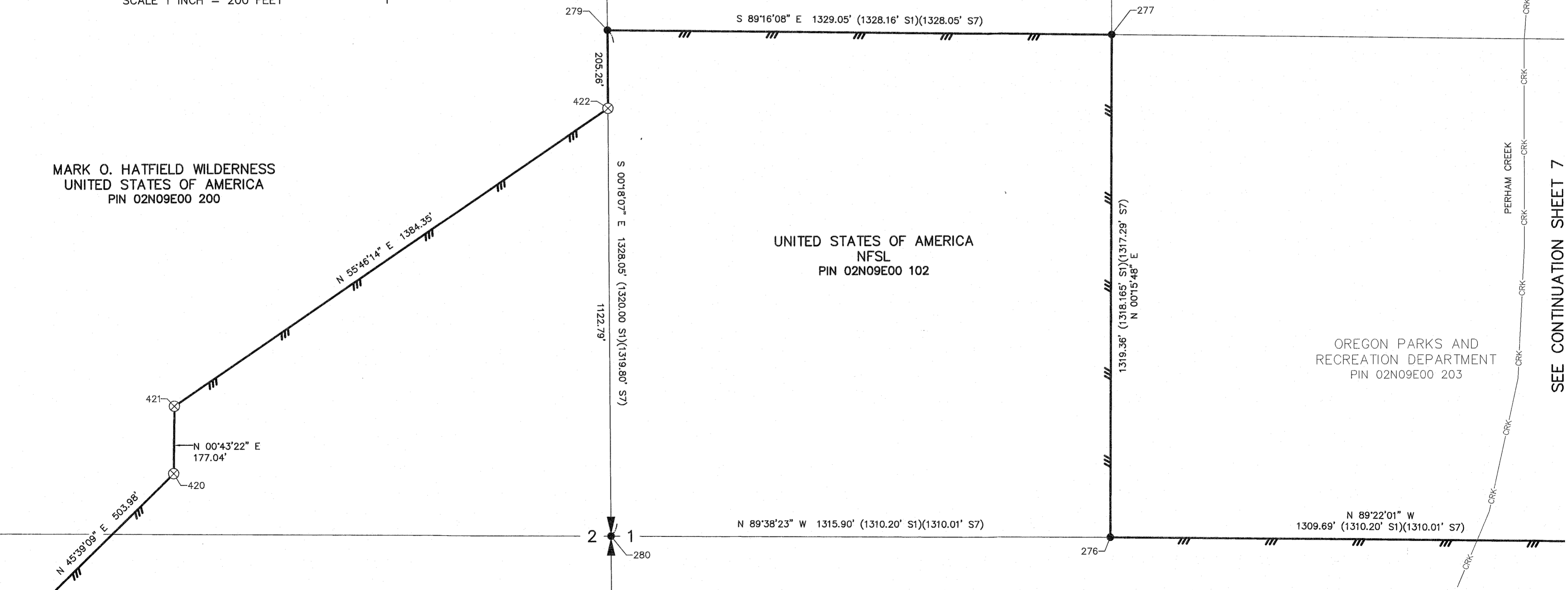
GOVT. LOT 4

GOVT. LOT 3

MARK O. HATFIELD WILDERNESS  
UNITED STATES OF AMERICA  
PIN 02N09E00 200

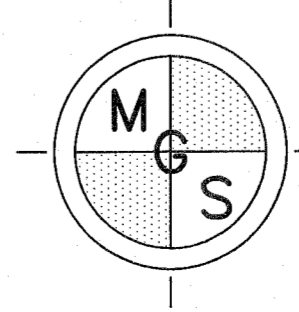
UNITED STATES OF AMERICA  
NFSL  
PIN 02N09E00 102

OREGON PARKS AND  
RECREATION DEPARTMENT  
PIN 02N09E00 203



SEE CONTINUATION SHEET 7

SEE CONTINUATION SHEET 5



MINISTER-GLAESER  
SURVEYING INC.  
2200 E. EVERGREEN BLVD.  
VANCOUVER, WA 98661  
(360) 694-3313

SCALE: 1"=200'  
JOB NO. 20-178  
DATE: 3/29/2022  
CALC BY: DAR  
DRAWN BY: RDH  
CHECKED BY: DAR  
SHEET 6 OF 17

CS# 2022 022

DWG FILE: 20178S-WILDERNESS.DWG

# RECORD OF SURVEY

HOOD RIVER COUNTY  
SURVEYORS OFFICE  
SURVEY NO. 2022-022  
FILED DATE: 4/20/2022  
BY: [Signature]

MARK O HATFIELD WILDERNESS AND GORGE FACE ADDITION  
BOUNDARY CADASTRAL SURVEY IN THE  
COLUMBIA RIVER GORGE NATIONAL SCENIC AREA  
LOCATED IN A PORTION OF GOVT. LOTS 3 & 4 OF  
SECTION 6, T. 2 N., R. 10 E., W.M. AND IN PORTIONS  
OF GOVT. LOTS 1, 2, 3 & 4, THE SW 1/4 OF THE SW 1/4  
AND THE NW 1/4 OF SECTION 1, THE SE 1/4 OF  
THE NE 1/4 AND THE SE 1/4 OF SECTION 2  
AND THE NW 1/4 AND THE SW 1/4 OF SECTION 12  
T. 2 N., R. 9 E., W.M., HOOD RIVER COUNTY, OREGON  
TASK ORDER NO. 1204T020F0039

OREGON PARKS AND  
RECREATION DEPARTMENT  
PIN 03N09E600 100

GOVT. LOT 4

GOVT. LOT 3

GOVT. LOT 2

GOVT. LOT 1

LINE WAS NOT POSTED  
NORTH OF HERE DUE TO  
INACCESSIBILITY

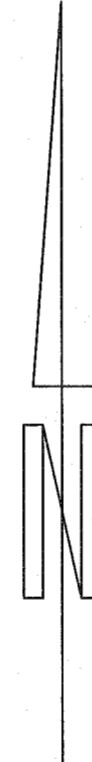
SEE CONTINUATION SHEET 6

SEE CONTINUATION SHEET 8

REGISTERED  
PROFESSIONAL  
LAND SURVEYOR  
*Daniel A. Renton*  
OREGON  
JUNE 30, 1997  
DANIEL A. RENTON  
2830  
Expires 12-31-2022

UNITED STATES OF AMERICA  
NFSL  
PIN 02N09E00 102

200 100 0 200 300 400  
SCALE 1 INCH = 200 FEET



SOUTHEAST CORNER SECTION 1 (MONUMENT 261) TO  
NORTHEAST CORNER SECTION 1 (MONUMENT 272)  
N 02°10'37" E 4863.46'  
2234.56' (2232.34' S7)  
(2244.00' GLO)

PERHAM CREEK ROAD  
(DIGITIZED FROM AERIAL MAP)

OREGON PARKS AND  
RECREATION DEPARTMENT  
PIN 02N09E00 203

N 89°22'01" W  
1309.69' (1310.20' S1)(1310.01' S7)

N 89°22'01" W 2602.71' (2603.54' S7)

425  
1 6

N 00°59'02" E  
2242.31' (2245.26' S1)(2243.56' S7)

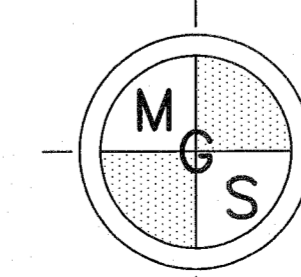
N 89°10'57" W 2649.19' (2652.36' S7)  
2522.47' (2526.06' S1)

T. 3 N. R. 9 E.  
T. 2 N. R. 9 E.

36  
1 6  
272

36

281  
(126.72' S1)



MINISTER-GLAESER  
SURVEYING INC.  
2200 E. EVERGREEN BLVD.  
VANCOUVER, WA 98661  
(360) 694-3313

SCALE: 1"=200'  
JOB NO. 20-178  
DATE: 3/29/2022  
CALC BY: DAR  
DRAWN BY: RDH  
CHECKED BY: DAR  
SHEET 7 OF 17

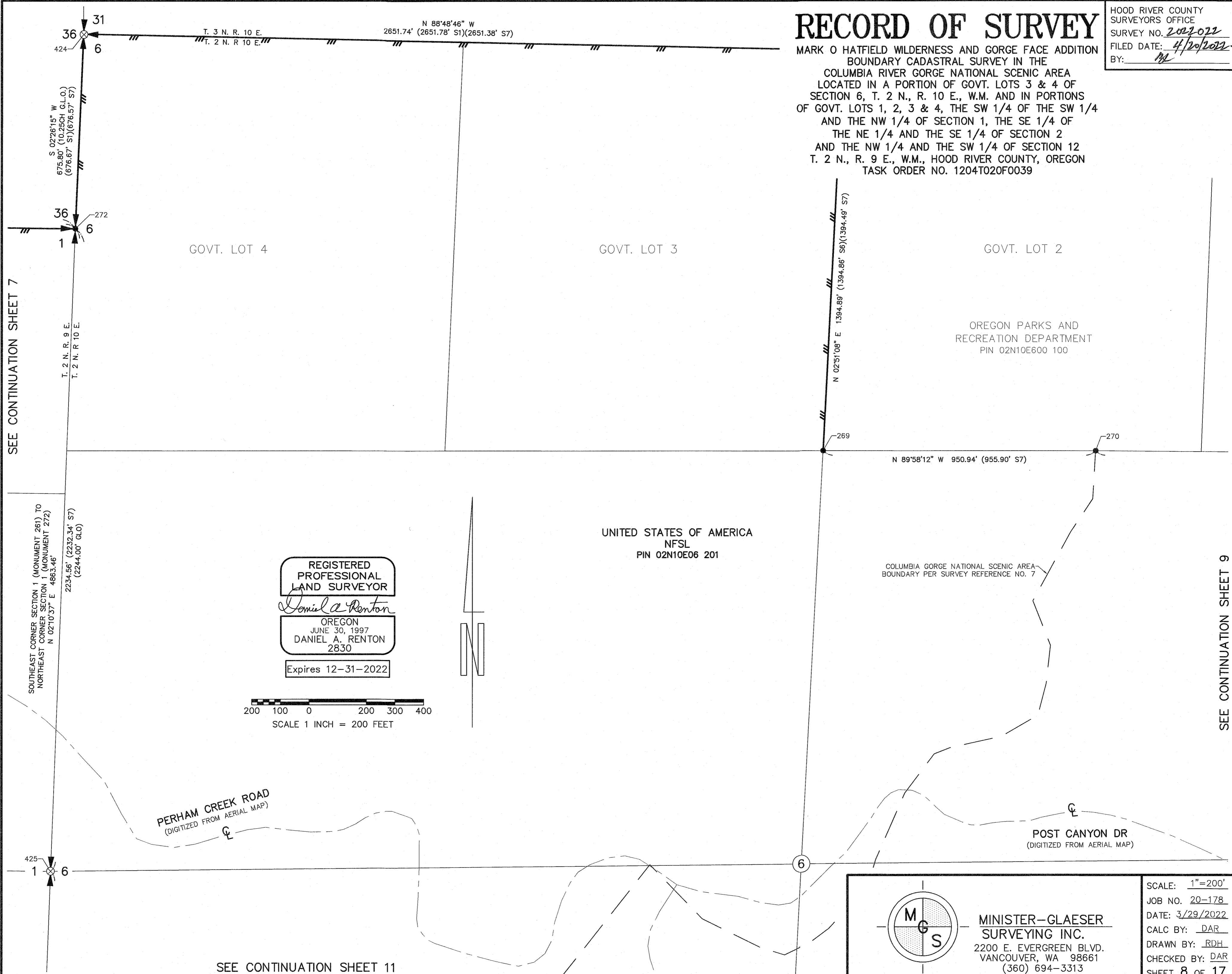
SEE CONTINUATION SHEET 12

CS# 202022

# RECORD OF SURVEY

HOOD RIVER COUNTY  
SURVEYORS OFFICE  
SURVEY NO. 2022022  
FILED DATE: 4/20/2022  
BY: ML

MARK O HATFIELD WILDERNESS AND GORGE FACE ADDITION  
BOUNDARY CADASTRAL SURVEY IN THE  
COLUMBIA RIVER GORGE NATIONAL SCENIC AREA  
LOCATED IN A PORTION OF GOVT. LOTS 3 & 4 OF  
SECTION 6, T. 2 N., R. 10 E., W.M. AND IN PORTIONS  
OF GOVT. LOTS 1, 2, 3 & 4, THE SW 1/4 OF THE SW 1/4  
AND THE NW 1/4 OF SECTION 1, THE SE 1/4 OF  
THE NE 1/4 AND THE SE 1/4 OF SECTION 2  
AND THE NW 1/4 AND THE SW 1/4 OF SECTION 12  
T. 2 N., R. 9 E., W.M., HOOD RIVER COUNTY, OREGON  
TASK ORDER NO. 1204T020F0039



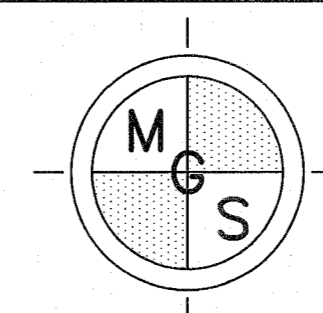
REGISTERED  
PROFESSIONAL  
LAND SURVEYOR  
*Daniel A. Renton*  
OREGON  
JUNE 30, 1997  
DANIEL A. RENTON  
2830  
Expires 12-31-2022

200 100 0 200 300 400  
SCALE 1 INCH = 200 FEET

SEE CONTINUATION SHEET 7

SEE CONTINUATION SHEET 9

SEE CONTINUATION SHEET 11



MINISTER-GLAESER  
SURVEYING INC.  
2200 E. EVERGREEN BLVD.  
VANCOUVER, WA 98661  
(360) 694-3313

SCALE: 1"=200'  
JOB NO. 20-178  
DATE: 3/29/2022  
CALC BY: DAR  
DRAWN BY: RDH  
CHECKED BY: DAR  
SHEET 8 OF 17

DWG FILE: 201785-WILDERNESS.DWG

CS# 2022022



# RECORD OF SURVEY

MARK O HATFIELD WILDERNESS AND GORGE FACE ADDITION  
BOUNDARY CADASTRAL SURVEY IN THE  
COLUMBIA RIVER GORGE NATIONAL SCENIC AREA  
LOCATED IN A PORTION OF GOVT. LOTS 3 & 4 OF  
SECTION 6, T. 2 N., R. 10 E., W.M. AND IN PORTIONS  
OF GOVT. LOTS 1, 2, 3 & 4, THE SW 1/4 OF THE SW 1/4  
AND THE NW 1/4 OF SECTION 1, THE SE 1/4 OF  
THE NE 1/4 AND THE SE 1/4 OF SECTION 2  
AND THE NW 1/4 AND THE SW 1/4 OF SECTION 12  
T. 2 N., R. 9 E., W.M., HOOD RIVER COUNTY, OREGON  
TASK ORDER NO. 1204T020F0039

HOOD RIVER COUNTY  
SURVEYORS OFFICE  
SURVEY NO. 2022 022  
FILED DATE: 4/20/2022  
BY: hsl

OREGON PARKS AND  
RECREATION DEPARTMENT  
PIN 03N10E3100 300

SEE CONTINUATION SHEET 8

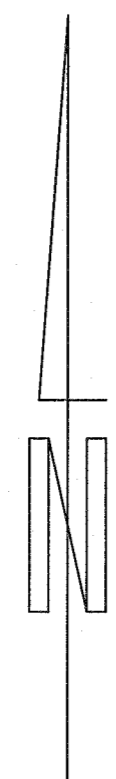
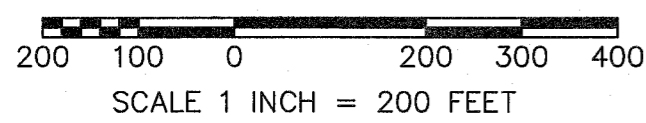


UNITED STATES OF AMERICA  
NFSL  
PIN 02N10E06 201

REGISTERED  
PROFESSIONAL  
LAND SURVEYOR

*Daniel A. Renton*  
OREGON  
JUNE 30, 1997  
DANIEL A. RENTON  
2830

Expires 12-31-2022



SEE CONTINUATION SHEET 10

	<b>MINISTER-GLAESER</b>	SCALE: 1"=200'
	<b>SURVEYING INC.</b>	JOB NO. 20-178
	2200 E. EVERGREEN BLVD.	DATE: 3/29/2022
	VANCOUVER, WA 98661	CALC BY: DAR
	(360) 694-3313	DRAWN BY: RDH
	CHECKED BY: DAR	SHEET 9 OF 17

CS# 2022 022

DWG FILE: 201785-WILDERNESS.DWG

SEE CONTINUATION SHEET 9

POST CANYON DR  
(DIGITIZED FROM AERIAL MAP)

# RECORD OF SURVEY

MARK O HATFIELD WILDERNESS AND GORGE FACE ADDITION  
BOUNDARY CADASTRAL SURVEY IN THE  
COLUMBIA RIVER GORGE NATIONAL SCENIC AREA  
LOCATED IN A PORTION OF GOVT. LOTS 3 & 4 OF  
SECTION 6, T. 2 N., R. 10 E., W.M. AND IN PORTIONS  
OF GOVT. LOTS 1, 2, 3 & 4, THE SW 1/4 OF THE SW 1/4  
AND THE NW 1/4 OF SECTION 1, THE SE 1/4 OF  
THE NE 1/4 AND THE SE 1/4 OF SECTION 2  
AND THE NW 1/4 AND THE SW 1/4 OF SECTION 12  
T. 2 N., R. 9 E., W.M., HOOD RIVER COUNTY, OREGON  
TASK ORDER NO. 1204T020F0039

HOOD RIVER COUNTY  
SURVEYORS OFFICE  
SURVEY NO. 2022 022  
FILED DATE: 4/20/2022  
BY: RD

SEE CONTINUATION SHEET 11

N 02°13'50" E 5349.31' (5348.56' S2)  
SOUTHEAST CORNER SECTION 6 (MONUMENT 258) TO  
NORTHEAST CORNER SECTION 6 (MONUMENT 236)  
2618.57' (2634.39' J.L.H.) (2618.74' S4) (2618.74' S6) (2618.35' S7)  
N 02°45'36" E

2674.92' (2632.34' S1) (2675.28' S5) (2674.86' S7)  
N 86°03'30" W

RIORDAN HILL DR  
(DIGITIZED FROM AERIAL MAP)

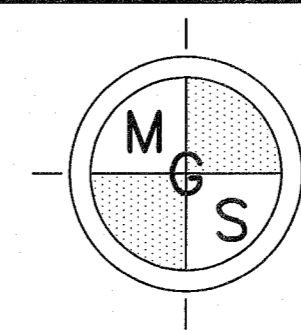
REGISTERED  
PROFESSIONAL  
LAND SURVEYOR

*Daniel A. Renton*

OREGON  
JUNE 30, 1997  
DANIEL A. RENTON  
2830

Expires 12-31-2022

200 100 0 200 300 400  
SCALE 1 INCH = 200 FEET



MINISTER-GLAESER  
SURVEYING INC.  
2200 E. EVERGREEN BLVD.  
VANCOUVER, WA 98661  
(360) 694-3313

SCALE: 1"=200'  
JOB NO. 20-178  
DATE: 3/29/2022  
CALC BY: DAR  
DRAWN BY: RDH  
CHECKED BY: DAR  
SHEET 10 OF 17

DWG FILE: 201785-WILDERNESS.DWG

CS# 2022 022

SEE CONTINUATION SHEET 8

# RECORD OF SURVEY

HOOD RIVER COUNTY  
SURVEYORS OFFICE  
SURVEY NO. 2022 022  
FILED DATE: 4/29/2022  
BY: HL

MARK O HATFIELD WILDERNESS AND GORGE FACE ADDITION  
BOUNDARY CADASTRAL SURVEY IN THE  
COLUMBIA RIVER GORGE NATIONAL SCENIC AREA  
LOCATED IN A PORTION OF GOVT. LOTS 3 & 4 OF  
SECTION 6, T. 2 N., R. 10 E., W.M. AND IN PORTIONS  
OF GOVT. LOTS 1, 2, 3 & 4, THE SW 1/4 OF THE SW 1/4  
AND THE NW 1/4 OF SECTION 1, THE SE 1/4 OF  
THE NE 1/4 AND THE SE 1/4 OF SECTION 2  
AND THE NW 1/4 AND THE SW 1/4 OF SECTION 12  
T. 2 N., R. 9 E., W.M., HOOD RIVER COUNTY, OREGON  
TASK ORDER NO. 1204T020F0039

PERHAM CREEK ROAD  
(DIGITIZED FROM AERIAL MAP)

UNITED STATES OF AMERICA  
NFSL  
PIN 02N10E06 201

SOUTHEAST CORNER SECTION 1 (MONUMENT 261) TO  
NORTHEAST CORNER SECTION 1 (MONUMENT 272)  
N 02°10'37" E 4863.46'

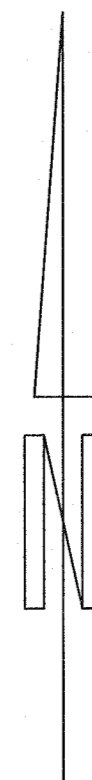
T. 2 N. R. 9 E.  
T. 2 N. R. 10 E.

2628.90' (2630.60' S7)  
(2640.00' GLO)

POST CANYON DR  
(DIGITIZED FROM AERIAL MAP)

REGISTERED  
PROFESSIONAL  
LAND SURVEYOR  
*Daniel A. Renton*  
OREGON  
JUNE 30, 1997  
DANIEL A. RENTON  
2830  
Expires 12-31-2022

200 100 0 200 300 400  
SCALE 1 INCH = 200 FEET



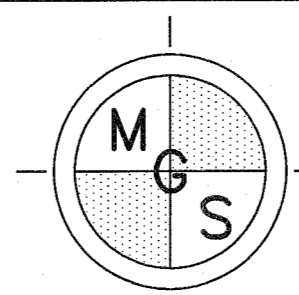
SEE CONTINUATION SHEET 12

SEE CONTINUATION SHEET 10

COLUMBIA GORGE NATIONAL SCENIC AREA  
BOUNDARY PER SURVEY REFERENCE NO. 7

255-  
N 24°51'11" W 31.4' FROM FOUND  
AND HELD MONUMENT NO. 261

2605.80' (2632.35' S1)(2605.74' S7)  
S 84°37'32" W



MINISTER-GLAESER  
SURVEYING INC.  
2200 E. EVERGREEN BLVD.  
VANCOUVER, WA 98661  
(360) 694-3313

SCALE: 1"=200'  
JOB NO. 20-178  
DATE: 3/29/2022  
CALC BY: DAR  
DRAWN BY: RDH  
CHECKED BY: DAR  
SHEET 11 OF 17

CS# 2022 022

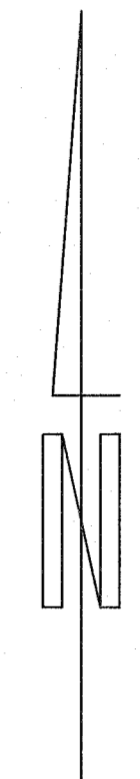
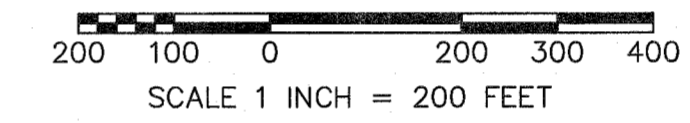
SEE CONTINUATION SHEET 7

# RECORD OF SURVEY

HOOD RIVER COUNTY  
SURVEYORS OFFICE  
SURVEY NO. 2022 022  
FILED DATE: 4/20/2022  
BY: [Signature]

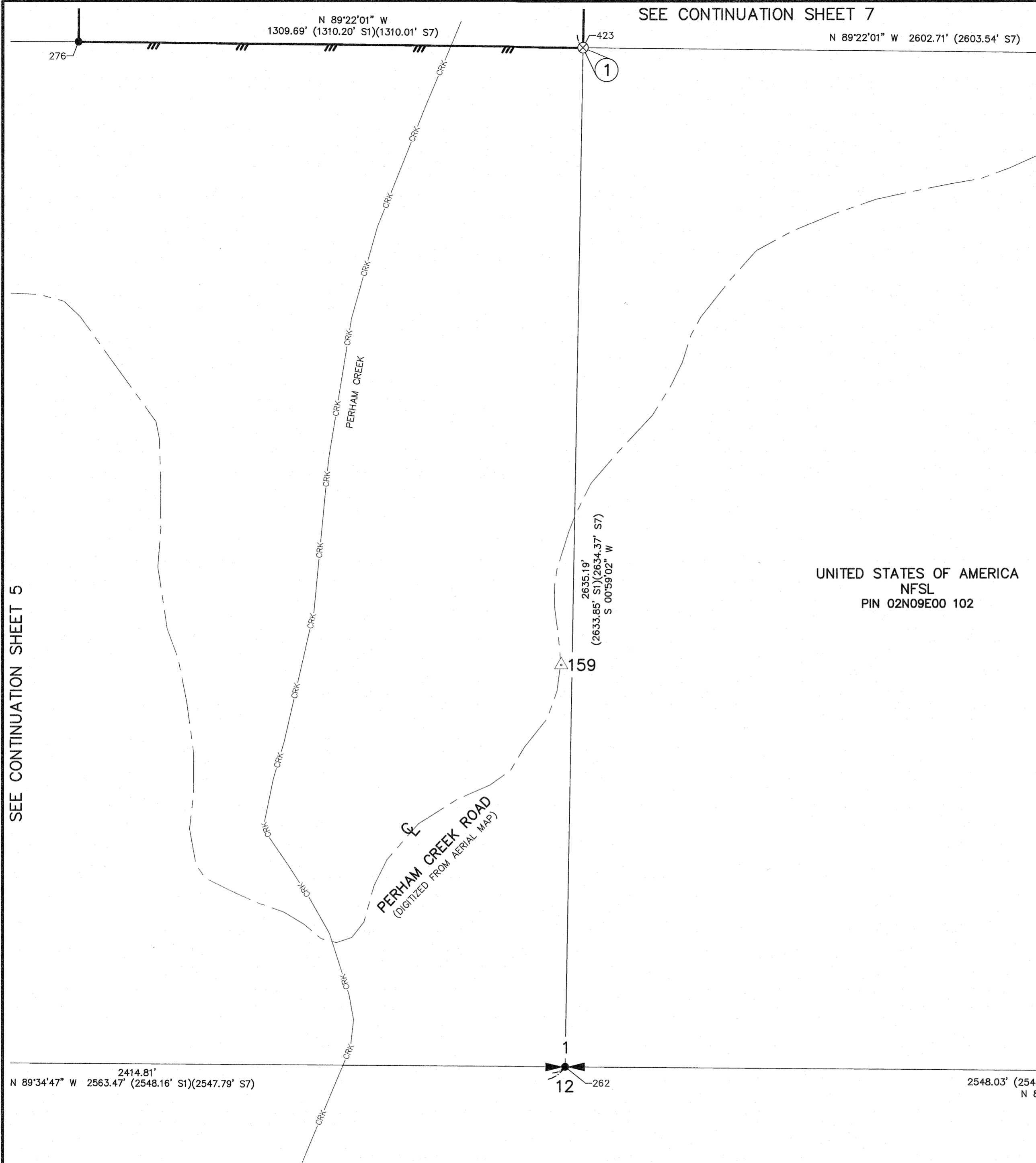
MARK O HATFIELD WILDERNESS AND GORGE FACE ADDITION  
BOUNDARY CADASTRAL SURVEY IN THE  
COLUMBIA RIVER GORGE NATIONAL SCENIC AREA  
LOCATED IN A PORTION OF GOVT. LOTS 3 & 4 OF  
SECTION 6, T. 2 N., R. 10 E., W.M. AND IN PORTIONS  
OF GOVT. LOTS 1, 2, 3 & 4, THE SW 1/4 OF THE SW 1/4  
AND THE NW 1/4 OF SECTION 1, THE SE 1/4 OF  
THE NE 1/4 AND THE SE 1/4 OF SECTION 2  
AND THE NW 1/4 AND THE SW 1/4 OF SECTION 12  
T. 2 N., R. 9 E., W.M., HOOD RIVER COUNTY, OREGON  
TASK ORDER NO. 1204T020F0039

REGISTERED  
PROFESSIONAL  
LAND SURVEYOR  
*Daniel A. Renton*  
OREGON  
JUNE 30, 1997  
DANIEL A. RENTON  
2830  
Expires 12-31-2022



UNITED STATES OF AMERICA  
NFSL  
PIN 02N09E00 102

COLUMBIA GORGE NATIONAL SCENIC AREA  
BOUNDARY PER SURVEY REFERENCE NO. 7



SEE CONTINUATION SHEET 5

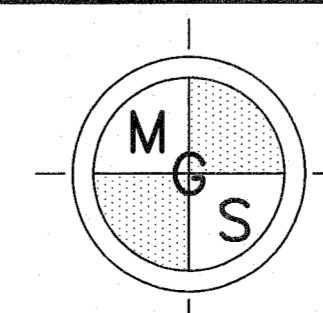
SEE CONTINUATION SHEET 11

SOUTHEAST CORNER SECTION 1 (MONUMENT 261) TO  
NORTHEAST CORNER SECTION 1 (MONUMENT 272)  
N 02°10'37" E 4863.46'  
T. 2 N. R. 9 E.  
T. 2 N. R. 10 E.

N 24°51'11" W 31.4' FROM FOUND  
AND HELD MONUMENT NO. 261

N 89°34'47" W 2563.47' (2548.16' S1)(2547.79' S7)

2548.03' (2548.17' S1)(2547.78' S7)  
N 89°31'43" W



MINISTER-GLAESER  
SURVEYING INC.  
2200 E. EVERGREEN BLVD.  
VANCOUVER, WA 98661  
(360) 694-3313

SCALE: 1"=200'  
JOB NO. 20-178  
DATE: 3/29/2022  
CALC BY: DAR  
DRAWN BY: RDH  
CHECKED BY: DAR  
SHEET 12 OF 17

CS# 2022 022

**FOUND MONUMENT TABLE:**

236- CORNER OF SECTIONS 31 AND 32, T. 3 N., R. 10 E., W.M. AND SECTIONS 5 AND 6, T. 2 N., R. 10 E. W.M. SURVEY REFERENCE NO. 1, 6, 7, 8 AND H.R.C. CORNER CARD NO. 819

1860 - G.L.O.  
A 12" CEDAR BEARS N 52° E, 0.46 CHAINS  
AN 18" FIR BEARS N 63° W, 0.28 CHAINS  
AN 8" CEDAR BEARS S 70° E, 0.57 CHAINS  
A 5" CEDAR BEARS S 65° W, 0.20 CHAINS

1971 - CS1050, TENNESON ENGINEERING CORP., HILL SURVEY FOR BILL DODSON BPA FOUND IRON PIPE AND BT

1978 - CS1978035, BISHOP SURVEYING, BISHOP SURVEY FOR HAROLD HOOVER FOUND 3/4" IRON PIPE AND STUMP OF BEARING TREE AS PER RECORD

1978 - CS1978084, BISHOP SURVEYING, BISHOP SURVEY FOR DAN HOWARD FOUND G.L.O. CORNER OF RECORD

1978 - H.R.C. CORNER CARD 819  
FOUND 1/2" IRON PIPE AND REPLACED WITH 2" IRON PIPE AND BRASS CAP FROM WHICH:  
ORIGINAL BT BEARS S 21° W, 8 FEET  
ESTABLISHED THE FOLLOWING:  
AN 8" FIR BEARS N 39° W, 4 FEET  
AN 18" FIR BEARS N 74° E, 32 FEET  
AN 8" FIR BEARS N 22° E, 25 FEET  
A 16" FIR BEARS S 43° W, 6 FEET

2019 - CS2019017, WYEAST SURVEYS, DOWD SURVEY FOR MITCHELL RIDGE LLC FOUND 2" IRON PIPE WITH BRASS CAP AS PER CORNER CARD NO. 819, LEANING NORTHEASTERLY

APRIL 15, 2021  
MACAULEY BROWN (PARTY CHIEF) AND LEVI BAIRD (INSTRUMENT PERSON) FOUND A H.R.C. 3" BRASS CAP ON A 2" IRON PIPE 0.7 FEET ABOVE GROUND (SEE MONUMENT DETAIL ON SHEET 16), FROM WHICH:  
AN 18" DIA. ERODED STUMP BEARS S 21° W, 9.4 FEET TO CENTER  
A 15" DIA. SAWN STUMP BEARS N 25° E, 26.15 FEET TO CENTER FACE  
A 27" DIA. FIR SNAG BEARS N 73° E, 34.1 FEET WITH HEALED BLAZE  
AN 8" DIA. SAWN FIR STUMP PIT BEARS S 28° E, 4.15 FEET

ESTABLISHED THE FOLLOWING ACCESSORIES:  
A 31" DIA. FIR BEARS N 40° W, 24.75 FEET MRKD "SCT3NR10ES31BT" WITH BRASS WASHER  
A 26" DIA. FIR BEARS N 69° E, 59.9 FEET MRKD "SCT3NR10ES32BT" WITH BRASS WASHER  
A 5/8" IRON ROD WITH 2" ALUMINUM CAP BEARS S 47° E, 11.45 FEET

NOTE: SECTION NUMBER STAMPING IS INCORRECT AS SHOWN ON DETAIL SHEET 16.  
SAID MONUMENT WAS WITNESSED BY DANIEL RENTON (OR PLS 2830) IN JULY 2021.

255- SURVEY REFERENCE NO. 3, 7

DECEMBER 16, 2020  
JAKE SPURRIER (PARTY CHIEF) AND LEVI BAIRD (INSTRUMENT PERSON) FOUND A 1/2" IRON PIPE, 0.8 FEET ABOVE GROUND, SEVERELY BENT OVER TO GROUND, TIED SPINHOLE. (BEARS N 24°51'11" W 31.4' FROM FOUND AND HELD MONUMENT NO. 261)

SAID MONUMENT WAS WITNESSED BY DANIEL RENTON (OR PLS 2830) IN JULY 2021.

256- SURVEY REFERENCE NO. 3, 7 AND H.R.C. CORNER CARD NO. 378 (SEE SET MONUMENT NO. 415)

DECEMBER 17, 2020  
JAKE SPURRIER (PARTY CHIEF) AND LEVI BAIRD (INSTRUMENT PERSON) FOUND A 1/2" IRON PIPE, 0.2 FEET ABOVE GROUND, LEANING NORTHWEST, TIED SPINHOLE.

N 17°13' W 0.8' FROM SET MONUMENT NO. 415

SAID MONUMENT WAS WITNESSED BY DANIEL RENTON (OR PLS 2830) IN JULY 2021.

257- 1/4 CORNER TO SECTIONS 6 & 7, T. 2 N., R. 10 E., W.M. SURVEY REFERENCE NO. 1, 5, 6, 7 AND H.R.C. CORNER CARD NO. 804

H.R.C. CORNER CARD NO. 804  
FOUND 1/2" IRON PIPE AND RP'S SET BY HACKETT IN 1908 AS FOLLOWS:  
A 1/2" IRON PIPE BEARS 33 FEET NORTH  
A 1/2" IRON PIPE BEARS 33 FEET EAST  
A 1/2" IRON PIPE BEARS 33 FEET SOUTH  
A 1/2" IRON PIPE BEARS 33 FEET WEST

ESTABLISHED THE FOLLOWING:  
SET 1-1/2" IRON PIPE OVER CORNER PIPE AND SET BRASS CAP FROM WHICH:  
A 10" DOUG FIR BEARS N 30° E, 12.8 FEET  
A 20" DOUG FIR BEARS S 07° E, 36.3 FEET

DECEMBER 18, 2020  
JAKE SPURRIER (PARTY CHIEF) AND LEVI BAIRD (INSTRUMENT PERSON) FOUND A 3" H.R.C. BRASS CAP ON AN IRON PIPE, 0.7 FEET ABOVE GROUND. (SEE MONUMENT DETAIL ON SHEET 16)

NOTE: CORNER NOT MAINTAINED THIS SURVEY  
SAID MONUMENT WAS WITNESSED BY DANIEL RENTON (OR PLS 2830) IN JULY 2021.

258- CORNER TO SECTIONS 5, 6, 7 & 8, T. 2 N., R. 10 E., W.M. SURVEY REFERENCE NO. 1, 2, 4, 5, 6, 7 AND H.R.C. CORNER CARD NO. 323

H.R.C. CORNER CARD NO. 323  
1967 BY A. HUTSON  
FOUND 1/2" IRON PIPE, 1 FT ABOVE GROUND AND SQUARE TAG ON TREE FROM WHICH:  
A FIR SNAG BEARS N 70° E, 55 LKS, READABLE  
A LIVE 10" FIR BEARS S 15° E, 40 LKS  
OTHERS GONE

H.R.C. REVISION  
FOUND 2" IRON PIPE WITH BRASS CAP FROM WHICH:  
A 16" FIR BEARS S 20° E (UNABLE TO READ DISTANCE)  
A 12" FIR BEARS S 70° W, 22 FEET  
A 16" FIR BEARS N 22° W, 7 FEET  
A 14" FIR BEARS N 49° E, 4.5 FEET  
RIORDAN HILL DR BEARS S 07° W, 495 FEET (TAG ON ROAD)

DECEMBER 18, 2020  
JAKE SPURRIER (PARTY CHIEF) AND LEVI BAIRD (INSTRUMENT PERSON) FOUND A 3" H.R.C. BRASS CAP ON AN IRON PIPE, 0.2 FEET ABOVE GROUND. (SEE MONUMENT DETAIL ON SHEET 16)

NOTE: CORNER NOT MAINTAINED THIS SURVEY  
SAID MONUMENT WAS WITNESSED BY DANIEL RENTON (OR PLS 2830) IN JULY 2021.

259- EAST 1/4 CORNER OF SECTION 6, T. 2 N., R. 10 E., W.M. SURVEY REFERENCE NO. 4, 5, 6, 7 AND H.R.C. CORNER CARD NO. 991

H.R.C. CORNER CARD NO. 991  
CORNER IS A 1-1/2" IRON PIPE WITH BRASS CAP SET FROM ORIGINAL BT'S AS FOUND BY J.L.H. MARCH 1909 SURVEY

1985- H.R.C. SET A PIPE AND BRASS CAP FROM THE REMAINS OF TWO G.L.O. BT'S FROM WHICH:  
30" DOUG FIR REMAINS BEARS N 21° W, 34.32 FEET  
36" DOUG FIR REMAINS BEARS EAST, 73.92 FEET

ESTABLISHED THE FOLLOWING:  
A 9" DOUG FIR BEARS WEST, 6.30 FEET  
A 6" DOUG FIR BEARS S 64° E, 16.50 FEET

DECEMBER 18, 2020  
JAKE SPURRIER (PARTY CHIEF) AND LEVI BAIRD (INSTRUMENT PERSON) FOUND A 3" H.R.C. BRASS CAP ON AN IRON PIPE, 1.0 FEET ABOVE GROUND. (SEE MONUMENT DETAIL ON SHEET 16)

NOTE: CORNER NOT MAINTAINED THIS SURVEY  
SAID MONUMENT WAS WITNESSED BY DANIEL RENTON (OR PLS 2830) IN JULY 2021.

260- NORTH 1/16 CORNER OF SECTION 6, T. 2 N., R. 10 E., W.M. SURVEY REFERENCE NO. 6, 7, 8 AND H.R.C. CORNER CARD NO. 1137

H.R.C. CORNER CARD NO. 1137 (REFERENCE FIELD BOOK 90-1)  
SET 5/8" X 30" IRON ROD WITH PLASTIC CAP  
40' SOUTHEAST OF TIMBER CORNER ON STEEP SIDEHILL  
CORNER IS 70 FEET NORTH OF DEAD END SKID ROAD  
NO BT'S AVAILABLE DUE TO STEEP SIDEHILL  
SET CARSONITE POST NEAR CORNER

1990 - CS1990057, RICHARD ARNOLD  
SET 5/8" IRON ROD WITH PLASTIC CAP, "COUNTY SURVEYOR"

DECEMBER 21, 2020  
JAKE SPURRIER (PARTY CHIEF) AND LEVI BAIRD (INSTRUMENT PERSON) FOUND A 5/8" IRON ROD WITH A DAMAGED YELLOW PLASTIC CAP, "COUNTY SURVEYOR", 0.4 FEET ABOVE GROUND, FROM WHICH:  
A "PROPERTY BOUNDARY" CARSONITE POST BEARS 1.0 FEET NORTH

SAID MONUMENT WAS WITNESSED BY DANIEL RENTON (OR PLS 2830) IN JULY 2021.

261- CORNER OF SECTIONS 1 & 12, T. 2 N., R. 9 E., W.M. AND SECTIONS 6 & 7, T. 2 N., R. 10 E., W.M. SURVEY REFERENCE NO. 1, 7 AND H.R.C. CORNER CARD NO. 805

H.R.C. CORNER CARD NO. 805  
FOUND 1/2" IRON PIPE FROM WHICH:  
AN 8" DOUG FIR BEARS N 07°30' W, 8.0 FEET  
AN 8" DOUG FIR BEARS S 11° W, 40.5 FEET  
AN 8" DOUG FIR BEARS S 69° E, 22.0 FEET  
A 12" DOUG FIR BEARS N 03°30' E, 23.6 FEET  
A 1/2" IRON PIPE BEARS N 25° W, 32 FEET  
A 1/2" IRON PIPE BEARS N 80° W, 31.6 FEET  
A 1/2" IRON PIPE BEARS SOUTH 33 FEET

DECEMBER 21, 2020  
JAKE SPURRIER (PARTY CHIEF) AND LEVI BAIRD (INSTRUMENT PERSON) FOUND A 1/2" IRON PIPE, 0.5 FEET ABOVE GROUND, TOP BENT NORTHWEST, TIED SPINHOLE FROM WHICH:  
A 1/2" IRON PIPE BEARS N 35° W, 31.7 FEET  
A 1/2" IRON PIPE BEARS N 90° W, 31.2 FEET  
A 1/2" IRON PIPE BEARS S 05° E, 33.2 FEET

ESTABLISHED THE FOLLOWING:  
A 10" FIR BEARS N 50° W, 25.1 FEET MRKD "SCT2NR9ES1BT" WITH BRASS WASHER  
A 12" FIR BEARS N 32° E, 12.3 FEET MRKD "SCT2NR10ES6BT" WITH BRASS WASHER  
A 12" FIR BEARS S 56° E, 30.9 FEET MRKD "SCT2NR10ES7BT" WITH BRASS WASHER  
AN 11" FIR BEARS S 38° W, 29.1 FEET MRKD "SCT2NR9ES12BT" WITH BRASS WASHER

(NO ORIGINAL BEARING TREE EVIDENCE WAS FOUND)

SAID MONUMENT WAS WITNESSED BY DANIEL RENTON (OR PLS 2830) IN JULY 2021.

262- 1/4 CORNER TO SECTIONS 1 & 12, T. 2 N., R. 9 E., W.M. SURVEY REFERENCE NO. 1, 7 AND H.R.C. CORNER CARD NO. 788

H.R.C. CORNER CARD NO. 788  
CORNER IS A 2" IRON PIPE FROM WHICH:  
A 10" DOUG FIR BEARS N 49° E, 23.5 FEET MRKD "1/4"  
A 6" DOUG FIR BEARS N 77° E, MRKD "1/4"

DECEMBER 22, 2020  
JAKE SPURRIER (PARTY CHIEF) AND LEVI BAIRD (INSTRUMENT PERSON) FOUND A 2" IRON PIPE, 0.7 FEET ABOVE GROUND, FROM WHICH:  
A 21" FIR BEARS N 40° E, 23.9 FEET WITH HEALED BLAZE  
A 17" FIR BEARS N 77° E, 17.6 FEET WITH HEALED BLAZE  
(ADDED MAGNAIL AT SIDE CENTER, PAINTED AND ADDED SIGNS TO BOTH EXISTING BT'S)

ESTABLISHED THE FOLLOWING:  
A 12" FIR BEARS S 13° E, 15.2 FEET MRKD "1/4S12BT" WITH BRASS WASHER

SAID MONUMENT WAS WITNESSED BY DANIEL RENTON (OR PLS 2830) IN JULY 2021.

# RECORD OF SURVEY

MARK O HATFIELD WILDERNESS AND GORGE FACE ADDITION  
BOUNDARY CADASTRAL SURVEY IN THE  
COLUMBIA RIVER GORGE NATIONAL SCENIC AREA  
LOCATED IN A PORTION OF GOVT. LOTS 3 & 4 OF  
SECTION 6, T. 2 N., R. 10 E., W.M. AND IN PORTIONS  
OF GOVT. LOTS 1, 2, 3 & 4, THE SW 1/4 OF THE SW 1/4  
AND THE NW 1/4 OF SECTION 1, THE SE 1/4 OF  
THE NE 1/4 AND THE SE 1/4 OF SECTION 2  
AND THE NW 1/4 AND THE SW 1/4 OF SECTION 12  
T. 2 N., R. 9 E., W.M., HOOD RIVER COUNTY, OREGON  
TASK ORDER NO. 1204T020F0039

HOOD RIVER COUNTY  
SURVEYORS OFFICE  
SURVEY NO. 2022-022  
FILED DATE: 4/29/2022  
BY: BC

REGISTERED  
PROFESSIONAL  
LAND SURVEYOR

*Daniel A. Renton*

OREGON  
JUNE 30, 1997  
DANIEL A. RENTON  
2830

Expires 12-31-2022

269- CENTER NORTH 1/16 CORNER OF SECTION 6, T. 2 N., R. 10 E., W.M. SURVEY REFERENCE NO. 6, 7 AND H.R.C. CORNER CARD NO. 1136

H.R.C. CORNER CARD NO. 1136 (REFERENCE FIELD BOOK 90-1)  
SET 5/8" IRON ROD WITH PLASTIC CAP AT EAST EDGE OF WALNUT TIMBER SALE, AT WEST END OF BLAZED LINE IN 1FT X 1FT X 1FT MOUND OF STONE AND A CARSONITE POST MRKD "PROPERTY BOUNDARY-STATE PARK LAND BEHIND THIS SIGN" FROM WHICH:  
A 12" FIR BEARS N 35° E, 60.4 FEET MRKD "S6 1/16 BT"  
A 14" FIR BEARS S 85° E, 28.6 FEET MRKD "S6 1/16 BT" WITH TAG

1990 - CS1990057, RICHARD ARNOLD  
SET 5/8" IRON ROD WITH PLASTIC CAP, "COUNTY SURVEYOR"

JANUARY 11, 2021  
JAKE SPURRIER (PARTY CHIEF) AND LEVI BAIRD (INSTRUMENT PERSON) FOUND A 5/8" IRON ROD WITH RED PLASTIC CAP "COUNTY SURVEYOR", IN 1 FT X 1 FT MOUND OF STONE, FROM WHICH:  
AN "OREGON STATE PARK" CARSONITE POST BEARS NORTH 0.6 FEET  
A FALLEN 12" BT MRKD "S6 1/16 BT", THE STUMP PIT BEARS N 36° E, 60.5 FEET  
A 28" FIR WITH HEALED BLAZE BEARS S 85° E, 28.4 FEET

ESTABLISHED THE FOLLOWING:  
AN 11" FIR BEARS N 75° W, 14.9 FEET MRKD "S6 1/16 BT" WITH BRASS WASHER

SAID MONUMENT WAS WITNESSED BY DANIEL RENTON (OR PLS 2830) IN JULY 2021.

270- SURVEY REFERENCE NO. 7, 8

1999-H.R.C.  
SET 5/8" X 30" IRON ROD WITH PLASTIC CAP WITH "COUNTY SURVEYOR" AFFIXED

JANUARY 11, 2021  
JAKE SPURRIER (PARTY CHIEF) AND LEVI BAIRD (INSTRUMENT PERSON) FOUND A 5/8" IRON ROD WITH RED PLASTIC CAP "COUNTY SURVEYOR".

SAID MONUMENT WAS WITNESSED BY DANIEL RENTON (OR PLS 2830) IN JULY 2021.

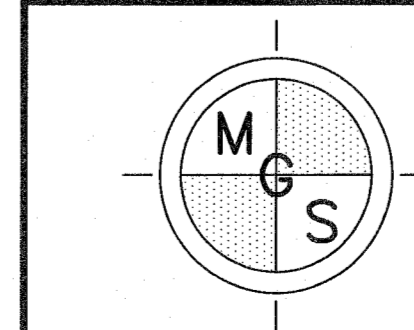
271- 1/4 CORNER OF SECTION 31, T. 3 N., R. 10 E., W.M. & SECTION 6, T. 2 N., R. 10 E., W.M. SURVEY REFERENCE NO. 1, 5, 6, 7 AND H.R.C. CORNER CARD NO. 732

H.R.C. CORNER CARD NO. 732  
FOUND A 3/4" IRON PIPE IN RING OF STONES FROM WHICH:  
A 40" DOUG FIR, LIVE, WITH HEALED FACE AND TAG BEARS N 08° W, 36.3 FEET  
CORNER IS ±100 FEET EAST OF DIRT ROAD

ESTABLISHED THE FOLLOWING:  
SET 2" BRASS CAP AND IRON PIPE IN RING OF STONE FROM WHICH:  
A 7" CHINQUAPIN WITH TAG BEARS N 75° E, 18.7 FEET MRKD "S31 BT"  
A 16" DOUG FIR WITH TAG BEARS S 24° E, 16.5 FEET MRKD "T2NR10E S6 BT"  
A 12" DOUG FIR WITH TAG BEARS S 88° W, 9.0 FEET MRKD "T2NR10E S6 BT"

JANUARY 13, 2021  
JAKE SPURRIER (PARTY CHIEF) AND LEVI BAIRD (INSTRUMENT PERSON) FOUND A 2" H.R.C. BRASS CAP ON AN IRON PIPE, 0.8 FEET ABOVE GROUND IN MOUND OF STONE, (SEE MONUMENT DETAIL ON SHEET 16) FROM WHICH:  
A STUMP PIT BEARS N 74° E, 18.9 FEET (A ROTTED TREE FOUND WITH NO EVIDENCE)  
A 44" FIR WITH HEALED BLAZE BEARS N 09° W, 35.4 FEET  
A 16" FIR WITH HEALED BLAZE BEARS S 88° W, 8.7 FEET  
AN 18" FIR WITH HEALED BLAZE BEARS S 26° E, 16.2 FEET  
(ADDED MAGNAIL AT SIDE CENTER, PAINTED AND ADDED SIGNS TO EXISTING BT'S)

SAID MONUMENT WAS WITNESSED BY DANIEL RENTON (OR PLS 2830) IN JULY 2021.



MINISTER-GLAESER  
SURVEYING INC.  
2200 E. EVERGREEN BLVD.  
VANCOUVER, WA 98661  
(360) 694-3313

SCALE: N/A  
JOB NO. 20-178  
DATE: 3/29/2022  
CALC BY: DAR  
DRAWN BY: RDH  
CHECKED BY: DAR  
SHEET 13 OF 17

DWG FILE: 201785-WILDERNESS.DWG

CS# 2022-022

272- CORNER TO SECTION 36, T. 3 N., R. 9 E., W.M. & SECTION 1, T. 2 N., R. 9 E., W.M. SURVEY REFERENCE NO. 1, 7 AND H.R.C. CORNER CARD NO. 789

1880- G.L.O.  
SET 7" X 7" X 7" X 4.5 FEET LONG POST FROM WHICH:  
A 30" FIR BEARS N 46° W, 50 LINKS  
A 40" FIR BEARS S 12-1/2° E, 25 LINKS  
A 6" FIR BEARS S 11° W, 70 LINKS

H.R.C. CORNER CARD NO. 789  
CORNER IS A 2" IRON PIPE WITH BRASS CAP 10 FEET EAST OF 5/8" REBAR SET FOR APPROXIMATE CORNER FROM WHICH:  
A 20" DOUG FIR BLAZED AND TAGGED BEARS N 36° W, 11 FEET  
A 24" DOUG FIR BLAZED AND TAGGED BEARS N 30° E, 7 FEET

JANUARY 18, 2021  
JAKE SPURRIER (PARTY CHIEF) AND LEVI BAIRD (INSTRUMENT PERSON) FOUND A 3" BRASS CAP ON AN IRON PIPE, 1.1 FEET ABOVE GROUND IN MOUND OF STONE, (SEE MONUMENT DETAIL ON SHEET 16) FROM WHICH:  
A 32" FIR WITH HEALED BLAZE BEARS N 36° W, 8.3 FEET  
A 30" FIR WITH HEALED BLAZE BEARS N 55° E, 9.0 FEET  
(ADDED MAGNAIL AT SIDE CENTER, PAINTED AND ADDED SIGNS TO EXISTING BT'S)

ESTABLISHED THE FOLLOWING:  
A 7" FIR BEARS S 05° W, 23.9 FEET MRKD "SCT2NR9ES1BT" WITH BRASS WASHER

SAID MONUMENT WAS WITNESSED BY DANIEL RENTON (OR PLS 2830) IN JULY 2021.

275- 1/4 CORNER OF SECTIONS 11 & 12, T. 2 N., R. 9 E., W.M. SURVEY REFERENCE NO. 3, 7 AND H.R.C. CORNER CARD NO. 376

H.R.C. CORNER CARD NO. 376  
1967 BY A. HUTSON  
FOUND 8" SQUARE MAPLE 3 FEET ABOVE GROUND IN POOR CONDITION FROM WHICH:  
A 24" DOUG FIR, DOWN, BEARS N 70° W, 21 FEET  
AN 8" DOGWOOD BEARS S 13° W, 44 FEET IN POOR CONDITION

H.R.C. CORNER CARD NO. 376  
ROCK MRKD "1/4" ON WEST SIDE, FOUND BY V. BE. IN 1946 FROM WHICH:  
A 10" MAPLE BEARS N 45° E, 16 FEET MRKD "1/4 S"  
AN 8" DOGWOOD BEARS S 18° W, 22 FEET MRKD "1/4 S"

FOUND BOTH ORIGINAL BT'S AND SET 2" IRON PIPE WITH BRASS CAP

FEBRUARY 5, 2021  
JAKE SPURRIER (PARTY CHIEF) AND LEVI BAIRD (INSTRUMENT PERSON) FOUND A 3" BRASS CAP ON AN IRON PIPE, 0.1 FEET ABOVE GROUND (SEE MONUMENT DETAIL ON SHEET 16) FROM WHICH:  
A 55" FIR WITH HEALED BLAZE BEARS N 75° W, 28.1 FEET  
A 45" FIR WITH HEALED BLAZE BEARS S 51° W, 30.6 FEET  
(ADDED MAGNAIL AT SIDE CENTER, PAINTED AND ADDED SIGNS TO EXISTING BT'S)

ESTABLISHED THE FOLLOWING:  
A 25" FIR BEARS N 77° E, 17.6 FEET MRKD "1/4S12BT" WITH BRASS WASHER

SAID MONUMENT WAS WITNESSED BY DANIEL RENTON (OR PLS 2830) IN JULY 2021.

276- CENTER WEST 1/16 CORNER OF SECTION 1, T. 2 N., R. 9 E., W.M. SURVEY REFERENCE NO. 1, 7 AND H.R.C. CORNER CARD NO. 802

H.R.C. CORNER CARD NO. 802  
SET 5/8" IRON ROD FROM WHICH:  
A 12" DOUG FIR BEARS N 80° W, 3.5 FEET MRKD "1/16"  
(SEE APRIL-SEPT. 77 NOTE BOOK, PAGE 71)

MARCH 24, 2021  
JAKE SPURRIER (PARTY CHIEF) AND LEVI BAIRD (INSTRUMENT PERSON) FOUND A 5/8" IRON ROD WITH NO CAP, 0.9 FEET ABOVE GROUND, BENT NORTH, TIED SPINHOLE AND ADDED SMALL MOUND OF STONE FROM WHICH:  
A 16" FIR STUMP, ROTTED, BEARS N 80° W, 3.7 FEET (PAINTED RED BAND ON STUMP)

ESTABLISHED THE FOLLOWING:  
A 19" FIR BEARS N 31° E, 7.15 FEET MRKD "1/16 BT" WITH BRASS WASHER  
A 13" FIR BEARS S 76° W, 10.4 FEET MRKD "1/16 BT" WITH BRASS WASHER

SAID MONUMENT WAS WITNESSED BY DANIEL RENTON (OR PLS 2830) IN JULY 2021.

277- NORTHWEST 1/16 CORNER OF SECTION 1, T. 2 N., R. 9 E., W.M. SURVEY REFERENCE NO. 1, 7 AND H.R.C. CORNER CARD NO. 801

H.R.C. CORNER CARD NO. 801  
SET A 5/8" IRON ROD FROM WHICH:  
A 20" DOUG FIR BEARS S 52° E, 15.4 FEET ON NORTHEAST SLOPE  
(SEE APRIL-SEPT. 77 NOTE BOOK, PAGE 70)

MARCH 30, 2021  
JAKE SPURRIER (PARTY CHIEF) AND LEVI BAIRD (INSTRUMENT PERSON) FOUND A 5/8" IRON ROD WITH NO CAP, 1.0 FEET ABOVE GROUND, LEANING NORTH, TIED SPINHOLE FROM WHICH:  
A ROTTED SNAG BEARS S 52° E, 15.4 FEET  
(PAINTED WITH RED BAND, NO SIGNS ADDED DUE TO CONDITION)

ESTABLISHED THE FOLLOWING:  
A 28" FIR BEARS N 57° W, 31.1 FEET MRKD "S1 1/16 BT" WITH BRASS WASHER  
A 15" FIR BEARS S 11° E, 28.0 FEET MRKD "S1 1/16 BT" WITH BRASS WASHER

SAID MONUMENT WAS WITNESSED BY DANIEL RENTON (OR PLS 2830) IN JULY 2021.

278- CORNER TO SECTIONS 1, 2, 11 & 12, T. 2 N., R. 9 E., W.M. SURVEY REFERENCE NO. 1, 2, 7 AND H.R.C. CORNER CARD NO. 871

H.R.C. CORNER CARD NO. 871  
1979-SET BRASS CAP FROM WHICH:  
AN 11" DOUG FIR BEARS N 20° E, 16.0 FEET  
AN 8" DOUG FIR BEARS S 43° E, 16.0 FEET  
A 10" DOUG FIR BEARS S 18° W, 4 FEET MRKD "SC CS"  
A 12" DOUG FIR BEARS N 50° W, 21.0 FEET  
ALL BT'S HAVE YELLOW TAGS

MARCH 31, 2021  
JAKE SPURRIER (PARTY CHIEF) AND LEVI BAIRD (INSTRUMENT PERSON) FOUND A 3" H.R.C. BRASS CAP ON AN IRON PIPE IN CONCRETE, 0.3 FEET ABOVE GROUND (SEE MONUMENT DETAIL ON SHEET 16) FROM WHICH:  
A 22" FIR WITH HEALED BLAZE BEARS N 50° W, 21.3 FEET  
A 20" FIR WITH HEALED BLAZE BEARS N 20° E, 16.6 FEET  
A 12" FIR WITH HEALED BLAZE BEARS S 43° E, 15.7 FEET  
A 20" FIR WITH HEALED BLAZE BEARS S 18° W, 4.2 FEET  
(ADDED MAGNAIL AT SIDE CENTER, PAINTED AND ADDED SIGNS TO EXISTING BT'S)

SAID MONUMENT WAS WITNESSED BY DANIEL RENTON (OR PLS 2830) IN JULY 2021.

279- NORTH 1/16 CORNER OF SECTION 1, T. 2 N., R. 9 E., W.M. SURVEY REFERENCE NO. 1, 7 AND H.R.C. CORNER CARD NO. 786

H.R.C. CORNER CARD NO. 786  
CORNER IS A 5/8" REBAR WITH PLASTIC CAP ON TOP OF RIDGE, APPROXIMATELY 20 FEET SOUTH OF TRAIL FROM WHICH:  
AN 18" DOUG FIR BEARS N 16° W, 3.7 FEET MRKD "1/16"

APRIL 1, 2021  
JAKE SPURRIER (PARTY CHIEF) AND LEVI BAIRD (INSTRUMENT PERSON) FOUND A 5/8" IRON ROD WITH NO CAP, 0.6 FEET ABOVE GROUND FROM WHICH:  
A 27" FIR WITH HEALED BLAZE BEARS N 16° W, 4.6 FEET  
(ADDED MAGNAIL AT SIDE CENTER, PAINTED AND ADDED SIGNS TO EXISTING BT)

ESTABLISHED THE FOLLOWING:  
A 31" FIR BEARS N 77° E, 22.3 FEET MRKD "S1 1/16 BT" WITH BRASS WASHER

SAID MONUMENT WAS WITNESSED BY DANIEL RENTON (OR PLS 2830) IN JULY 2021.

280- 1/4 CORNER TO SECTIONS 1 & 2, T. 2 N., R. 9 E., W.M. SURVEY REFERENCE NO. 1, 2, 7 AND H.R.C. CORNER CARD NO. 841

H.R.C. CORNER CARD NO. 841  
CORNER IS A BRASS CAP IN A 2" IRON PIPE, SET BY H.R.C. IN 1979 FROM WHICH:  
A 24" WHITE FIR BEARS WEST 8.8 FEET, TAGGED AND SCRIBED  
A 30" DOUG FIR BEARS N 22° W, 29 FEET, TAGGED AND SCRIBED  
A 14" WHITE FIR HIGH STUMP BEARS N 38° E, 16.9 FEET

APRIL 2, 2021  
JAKE SPURRIER (PARTY CHIEF) AND LEVI BAIRD (INSTRUMENT PERSON) FOUND A 3" H.R.C. BRASS CAP ON AN IRON PIPE, 0.2 FEET ABOVE GROUND (SEE MONUMENT DETAIL ON SHEET 16) FROM WHICH:  
A 36" FIR WITH HEALED BLAZE BEARS N 36° W, 29.1 FEET  
(ADDED MAGNAIL AT SIDE CENTER, PAINTED AND ADDED SIGNS TO EXISTING BT)

ESTABLISHED THE FOLLOWING:  
A 14" FIR BEARS N 64° E, 13.0 FEET MRKD "1/4 S1 BT" WITH BRASS WASHER

SAID MONUMENT WAS WITNESSED BY DANIEL RENTON (OR PLS 2830) IN JULY 2021.

281- WITNESS CORNER TO 1/4 CORNER OF SECTION 36, T. 3 N., R. 9 E., W.M. & SECTION 1, T. 2 N., R. 9 E., W.M. SURVEY REFERENCE NO. 1, 7 AND H.R.C. CORNER CARD NO. 803 (LOCATION SHOWN AS E 1/6 CORNER, SECTION 1 ON CORNER CARD OVERVIEW MAP)

H.R.C. CORNER CARD NO. 803  
G.L.O. 1926 SURVEY SET A 2" IRON PIPE WITH BRASS CAP AS A WITNESS CORNER FROM WHICH:  
A 12" DOUG FIR BEARS N 38° W, 17.60 FEET, BLAZED  
A 6" WHITE FIR BEARS S 49° W, 12.00 FEET, BLAZED  
(SEE APRIL-SEPT. 77 NOTE BOOK)

APRIL 2, 2021  
JAKE SPURRIER (PARTY CHIEF) AND LEVI BAIRD (INSTRUMENT PERSON) FOUND A 2-1/2" G.L.O. BRASS CAP ON AN IRON PIPE (SEE MONUMENT DETAIL ON SHEET 16).

SAID MONUMENT WAS WITNESSED BY DANIEL RENTON (OR PLS 2830) IN JULY 2021.

# RECORD OF SURVEY

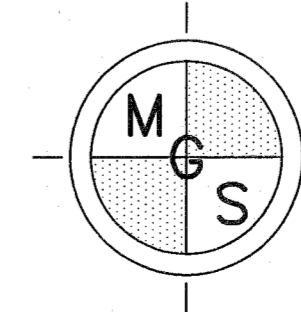
MARK O HATFIELD WILDERNESS AND GORGE FACE ADDITION  
BOUNDARY CADASTRAL SURVEY IN THE  
COLUMBIA RIVER GORGE NATIONAL SCENIC AREA  
LOCATED IN A PORTION OF GOVT. LOTS 3 & 4 OF  
SECTION 6, T. 2 N., R. 10 E., W.M. AND IN PORTIONS  
OF GOVT. LOTS 1, 2, 3 & 4, THE SW 1/4 OF THE SW 1/4  
AND THE NW 1/4 OF SECTION 1, THE SE 1/4 OF  
THE NE 1/4 AND THE SE 1/4 OF SECTION 2  
AND THE NW 1/4 AND THE SW 1/4 OF SECTION 12  
T. 2 N., R. 9 E., W.M., HOOD RIVER COUNTY, OREGON  
TASK ORDER NO. 1204T020F0039

HOOD RIVER COUNTY  
SURVEYORS OFFICE  
SURVEY NO. 2022-022  
FILED DATE: 4/29/2022  
BY: RB

REGISTERED  
PROFESSIONAL  
LAND SURVEYOR  
*Daniel A. Renton*  
OREGON  
JUNE 30, 1997  
DANIEL A. RENTON  
2830

Expires 12-31-2022

DWG FILE: 201785-WILDERNESS.DWG



MINISTER-GLAESER  
SURVEYING INC.  
2200 E. EVERGREEN BLVD.  
VANCOUVER, WA 98661  
(360) 694-3313

SCALE: N/A  
JOB NO. 20-178  
DATE: 3/29/2022  
CALC BY: DAR  
DRAWN BY: RDH  
CHECKED BY: DAR  
SHEET 14 OF 17

*CS# 2022-022*

**SET MONUMENT TABLE:**

415- CORNER OF SECTIONS 11, 12, 13 & 14, T. 2 N., R. 9 E., W.M.  
SURVEY REFERENCE NO. 3, 7 AND H.R.C. CORNER CARD NO. 378

H.R.C. CORNER CARD NO. 378  
1946 V.B.E. - FOUND SQUARED TREE SECTION CORNER  
AUGUST 1979 - SET A 2" IRON PIPE WITH BRASS CAP  
JULY 1980 - TAGGED AND SCRIBED 3 NEW BT'S AS FOLLOWS:  
A 10" DOUG FIR BEARS N 52' E, 37 FEET  
AN 18" DOUG FIR BEARS S 40' W, 19 FEET  
A 10" DOUG FIR BEARS N 70' W, 10.5 FEET  
AUGUST 1999 - 1 1/2" PIPE GONE, FOUND 1/2" IRON PIPE PER HENRY HACHETT FROM WHICH:  
A 34" DOUG FIR SNAG BEARS N 40' W, 75 FEET  
A 30" DOUG FIR STUMP BEARS N 30' E, 55 FEET  
A 10" DOUG FIR BEARS N 52' E, 37 FEET, TAGGED AND SCRIBED  
A 36" DOUG FIR BEARS S 10' E, 90 FEET, GROWN OVER WITH TAG  
AN 18" DOUG FIR BEARS S 40' W, 19 FEET  
A 30" DOUG FIR SNAG BEARS S 80' W, 80 FEET  
A 10" DOUG FIR BEARS N 70' W, 10.50 FEET, TAGGED AND SCRIBED

DECEMBER 17, 2020  
JAKE SPURRIER (PARTY CHIEF) AND LEVI BAIRD (INSTRUMENT PERSON) FOUND A 1/2" IRON PIPE, 0.2 FEET ABOVE GROUND, LEANING NORTHWEST, TIED SPINHOLE, NOT ACCEPTED.

APRIL 27, 2021  
JAKE SPURRIER (PARTY CHIEF) AND LEVI BAIRD (INSTRUMENT PERSON) SET 3-1/4" STANDARD USDA FOREST SERVICE ALUMINUM MONUMENT (SEE MONUMENT DETAIL ON SHEET 16), FLUSH IN GROUND FROM WHICH:  
A 1/2" IRON PIPE (FOUND MONUMENT NO. 256) BEARS N 17'13" W 0.8 FEET  
AN ERODED 28" SNAG WITH HEALED/ROTTED BLAZE BEARS N 51' W, 10.7 FEET TO FACE AN ERODED 12" FIR STUMP BEARS N 41' W, BROKEN TREE FOUND WITH PARTIAL SCRIBE  
A 24" ROTTED STUMP BEARS S 40' W, 18.8 FEET TO CENTER OF STUMP  
A 12" FIR WITH HEALED BLAZE BEARS N 50' E, 37.3 FEET  
(ADDED MAGNAIL AT SIDE CENTER TO LIVE BT, PAINTED AND ADDED SIGNS TO ALL BT'S)

ESTABLISHED THE FOLLOWING:  
AN 11" FIR BEARS S 85' W, 5.45 FEET MRKD "SCT2NR9ES14BT" WITH BRASS WASHER  
A 9" FIR BEARS S 13' E, 15.5 FEET MRKD "SCT2NR9ES13BT" WITH BRASS WASHER  
A 26" FIR BEARS N 14' W, 7.7 FEET MRKD "SCT2NR9ES11BT" WITH BRASS WASHER

SAID MONUMENT WAS WITNESSED BY DANIEL RENTON (OR PLS 2830) IN JULY 2021.

416- MARK O. HATFIELD WILDERNESS ANGLE POINT

JUNE 2, 2021  
JAKE SPURRIER (PARTY CHIEF) AND LEVI BAIRD (INSTRUMENT PERSON) SET 3-1/4" STANDARD USDA FOREST SERVICE ALUMINUM MONUMENT (SEE MONUMENT DETAIL ON SHEET 16), 0.2 FEET ABOVE GROUND.

ESTABLISHED THE FOLLOWING:  
A 5/8" IRON ROD WITH 2" ALUMINUM CAP MRKD "RM LS2830 2021 -" AND CNTR PUNCH BEARS N 68' E, 9.1 FEET  
A 5/8" IRON ROD WITH 2" ALUMINUM CAP MRKD "RM LS2830 2021 -" AND CNTR PUNCH BEARS S 08' W, 9.6 FEET

SAID MONUMENT WAS WITNESSED BY DANIEL RENTON (OR PLS 2830) IN JULY 2021.

418- MARK O. HATFIELD WILDERNESS ANGLE POINT

JUNE 7, 2021  
JAKE SPURRIER (PARTY CHIEF) AND LEVI BAIRD (INSTRUMENT PERSON) SET 3-1/4" STANDARD USDA FOREST SERVICE ALUMINUM MONUMENT (SEE MONUMENT DETAIL ON SHEET 16), 0.2 FEET ABOVE GROUND.

ESTABLISHED THE FOLLOWING:  
A 5/8" IRON ROD WITH 2" ALUMINUM CAP MRKD "RM LS2830 2021 -" AND CNTR PUNCH BEARS N 78' E, 8.5 FEET  
A 5/8" IRON ROD WITH 2" ALUMINUM CAP MRKD "RM LS2830 2021 -" AND CNTR PUNCH BEARS S 54' W, 8.6 FEET

SAID MONUMENT WAS WITNESSED BY DANIEL RENTON (OR PLS 2830) IN JULY 2021.

419- MARK O. HATFIELD WILDERNESS ANGLE POINT

JUNE 8, 2021  
JAKE SPURRIER (PARTY CHIEF) AND LEVI BAIRD (INSTRUMENT PERSON) SET 3-1/4" STANDARD USDA FOREST SERVICE ALUMINUM MONUMENT (SEE MONUMENT DETAIL ON SHEET 16), 0.2 FEET ABOVE GROUND.

ESTABLISHED THE FOLLOWING:  
A 5/8" IRON ROD WITH 2" ALUMINUM CAP MRKD "RM LS2830 2021 -" AND CNTR PUNCH BEARS N 15' W, 14.6 FEET  
A 5/8" IRON ROD WITH 2" ALUMINUM CAP MRKD "RM LS2830 2021 -" AND CNTR PUNCH BEARS S 36' E, 20.5 FEET

SAID MONUMENT WAS WITNESSED BY DANIEL RENTON (OR PLS 2830) IN JULY 2021.

420- MARK O. HATFIELD WILDERNESS ANGLE POINT

JUNE 8, 2021  
JAKE SPURRIER (PARTY CHIEF) AND LEVI BAIRD (INSTRUMENT PERSON) SET 3-1/4" STANDARD USDA FOREST SERVICE ALUMINUM MONUMENT (SEE MONUMENT DETAIL ON SHEET 16), 0.2 FEET ABOVE GROUND.

ESTABLISHED THE FOLLOWING:  
A 5/8" IRON ROD WITH 2" ALUMINUM CAP MRKD "RM LS2830 2021 -" AND CNTR PUNCH BEARS N 08' E, 9.2 FEET  
A 5/8" IRON ROD WITH 2" ALUMINUM CAP MRKD "RM LS2830 2021 -" AND CNTR PUNCH BEARS S 72' E, 9.8 FEET

SAID MONUMENT WAS WITNESSED BY DANIEL RENTON (OR PLS 2830) IN JULY 2021.

421- MARK O. HATFIELD WILDERNESS ANGLE POINT

JUNE 9, 2021  
JAKE SPURRIER (PARTY CHIEF) AND LEVI BAIRD (INSTRUMENT PERSON) SET 3-1/4" STANDARD USDA FOREST SERVICE ALUMINUM MONUMENT (SEE MONUMENT DETAIL ON SHEET 16), 0.2 FEET ABOVE GROUND.

ESTABLISHED THE FOLLOWING:  
A 5/8" IRON ROD WITH 2" ALUMINUM CAP MRKD "RM LS2830 2021 -" AND CNTR PUNCH BEARS N 06' W, 8.0 FEET  
A 5/8" IRON ROD WITH 2" ALUMINUM CAP MRKD "RM LS2830 2021 -" AND CNTR PUNCH BEARS S 63' E, 8.5 FEET

SAID MONUMENT WAS WITNESSED BY DANIEL RENTON (OR PLS 2830) IN JULY 2021.

422- MARK O. HATFIELD WILDERNESS ANGLE POINT

JUNE 9, 2021  
JAKE SPURRIER (PARTY CHIEF) AND LEVI BAIRD (INSTRUMENT PERSON) SET 3-1/4" STANDARD USDA FOREST SERVICE ALUMINUM MONUMENT (SEE MONUMENT DETAIL ON SHEET 16), FLUSH WITH GROUND.

ESTABLISHED THE FOLLOWING:  
A 5/8" IRON ROD WITH 2" ALUMINUM CAP MRKD "RM LS2830 2021 -" AND CNTR PUNCH BEARS N 78' W, 10.6 FEET  
A 5/8" IRON ROD WITH 2" ALUMINUM CAP MRKD "RM LS2830 2021 -" AND CNTR PUNCH BEARS N 63' E, 9.4 FEET

SAID MONUMENT WAS WITNESSED BY DANIEL RENTON (OR PLS 2830) IN JULY 2021.

423- CENTER 1/4 CORNER OF SECTION 1, T. 2 N., R. 9 E., W.M.

AUGUST 10, 2021  
GARRETT FINCH (PARTY CHIEF) AND COBY BENZLER (INSTRUMENT PERSON) SET 3-1/4" STANDARD USDA FOREST SERVICE ALUMINUM MONUMENT (SEE MONUMENT DETAIL ON SHEET 16), FLUSH WITH GROUND.

ESTABLISHED THE FOLLOWING:  
A 12" FIR BEARS S 18' W, 10.6 FEET MRKD "C 1/4 S1 BT" WITH BRASS WASHER  
A 14" FIR BEARS S 63' E, 9.8 FEET MRKD "X BT" WITH BRASS WASHER

SAID MONUMENT WAS WITNESSED BY DANIEL RENTON (OR PLS 2830) IN JULY 2021.

424- CORNER OF SECTION 31, T. 3 N., R. 10 E., W.M. AND SECTION 6, T. 2 N., R. 10 E., W.M. SURVEY REFERENCE NO. 1, 7

JUNE 9, 2021  
JAKE SPURRIER (PARTY CHIEF) AND LEVI BAIRD (INSTRUMENT PERSON) SET 3-1/4" STANDARD USDA FOREST SERVICE ALUMINUM MONUMENT (SEE MONUMENT DETAIL ON SHEET 16), FLUSH WITH GROUND FROM WHICH:  
A 36" SNAG WITH HEALED BLAZE BEARS S 30' W, 9.4 FEET TO FACE OF SNAG  
A 25" SNAG WITH HEALED BLAZE BEARS N 04' W, 17.9 FEET TO FACE OF SNAG  
(PAINTED AND ADDED SIGNS TO BOTH SNAGS)

ESTABLISHED THE FOLLOWING:  
A 21" FIR BEARS N 21' W, 3.5 FEET MRKD "SC T3NR9E S36 BT" WITH BRASS WASHER  
A 10" FIR BEARS N 41' E, 19.8 FEET MRKD "SC T3NR10E S31 BT" WITH BRASS WASHER  
A 15" FIR BEARS S 48' E, 36.4 FEET MRKD "SC T2NR10E S6 BT" WITH BRASS WASHER

SAID MONUMENT WAS WITNESSED BY DANIEL RENTON (OR PLS 2830) IN JULY 2021.

425- EAST 1/4 CORNER OF SECTION 1, T. 2 N., R. 9 E., W.M. SURVEY REFERENCE NO. 6, 7

AUGUST 10, 2021  
GARRETT FINCH (PARTY CHIEF) AND COBY BENZLER (INSTRUMENT PERSON) SET 3-1/4" STANDARD USDA FOREST SERVICE ALUMINUM MONUMENT (SEE MONUMENT DETAIL ON SHEET 16), FLUSH WITH GROUND.

ESTABLISHED THE FOLLOWING:  
A 12" FIR BEARS S 41' W, 13.6 FEET MRKD "1/4 S1 BT" WITH BRASS WASHER  
A 24" FIR BEARS N 32' W, 12.0 FEET MRKD "X BT" WITH BRASS WASHER

SAID MONUMENT WAS WITNESSED BY DANIEL RENTON (OR PLS 2830) IN JULY 2021.

# RECORD OF SURVEY

MARK O HATFIELD WILDERNESS AND GORGE FACE ADDITION  
BOUNDARY CADASTRAL SURVEY IN THE  
COLUMBIA RIVER GORGE NATIONAL SCENIC AREA  
LOCATED IN A PORTION OF GOVT. LOTS 3 & 4 OF  
SECTION 6, T. 2 N., R. 10 E., W.M. AND IN PORTIONS  
OF GOVT. LOTS 1, 2, 3 & 4, THE SW 1/4 OF THE SW 1/4  
AND THE NW 1/4 OF SECTION 1, THE SE 1/4 OF  
THE NE 1/4 AND THE SE 1/4 OF SECTION 2  
AND THE NW 1/4 AND THE SW 1/4 OF SECTION 12  
T. 2 N., R. 9 E., W.M., HOOD RIVER COUNTY, OREGON  
TASK ORDER NO. 1204T020F0039

HOOD RIVER COUNTY  
SURVEYORS OFFICE  
SURVEY NO. 2022022  
FILED DATE: 4/20/2022  
BY: AS

REGISTERED  
PROFESSIONAL  
LAND SURVEYOR

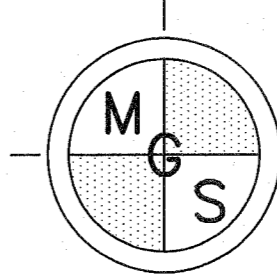
*Daniel A. Renton*

OREGON  
JUNE 30, 1997  
DANIEL A. RENTON  
2830

Expires 12-31-2022

MONUMENT TABLE		
POINT NO.	NORTHING	EASTING
236	740726.93	7919428.48
255	735349.99	7913944.14
256	730115.68	7908587.14
257	735565.54	7916551.70
258	735381.67	7919220.29
259	737997.21	7919346.38
260	739393.61	7919390.89
261	735321.47	7913957.36
262	735342.43	7911409.41
269	739408.50	7916752.59
270	739408.00	7917703.53
271	740801.66	7916822.00
272	740181.42	7914142.09
275	732779.24	7908679.23
276	737991.70	7910145.06
277	739311.04	7910151.12
278	735361.23	7908846.01
279	739328.00	7908822.18
280	737999.97	7908829.18
281	740217.40	7911619.87

MONUMENT TABLE		
POINT NO.	NORTHING	EASTING
415	730114.96	7908587.37
416	735360.14	7908994.66
418	737280.15	7907309.57
419	737814.72	7907316.06
420	738167.01	7907676.46
421	738344.04	7907678.69
422	739122.75	7908823.26
423	737977.23	7911454.66
424	740854.76	7914171.72
425	737948.47	7914057.21

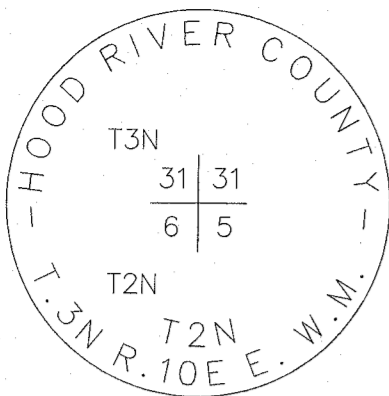


MINISTER-GLAESER  
SURVEYING INC.  
2200 E. EVERGREEN BLVD.  
VANCOUVER, WA 98661  
(360) 694-3313

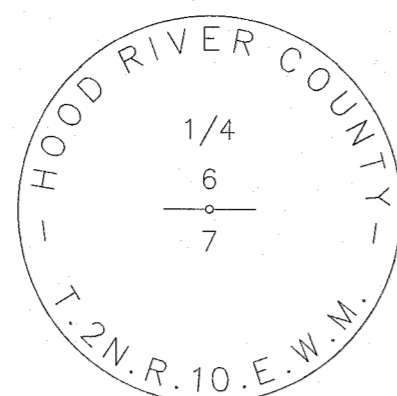
SCALE: N/A  
JOB NO. 20-178  
DATE: 3/29/2022  
CALC BY: DAR  
DRAWN BY: RDH  
CHECKED BY: DAR  
SHEET 15 OF 17

DWG FILE: 201785-WILDERNESS.DWG

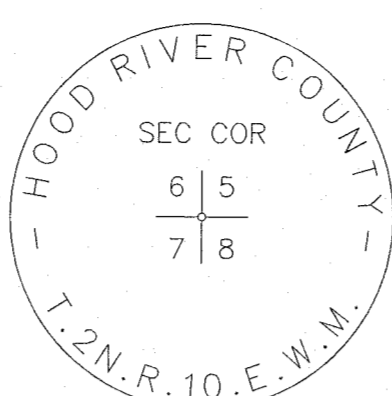
*C5# 2022 022*



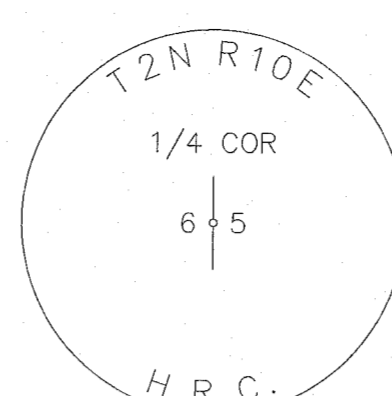
CORNER CODE: Z-5  
GCDB: 200100  
POINT NUMBER: 236



CORNER CODE: E-3  
GCDB: 140600  
POINT NUMBER: 257



CORNER CODE: E-5  
GCDB: 200600  
POINT NUMBER: 258



CORNER CODE: C-5  
GCDB: 200640  
POINT NUMBER: 259

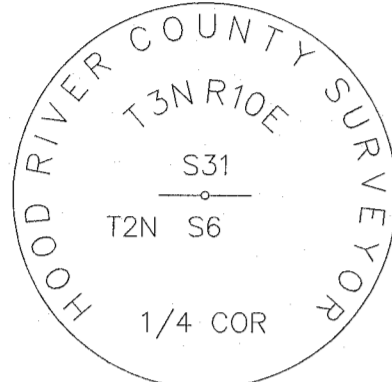
# RECORD OF SURVEY

MARK O HATFIELD WILDERNESS AND GORGE FACE ADDITION  
BOUNDARY CADASTRAL SURVEY IN THE  
COLUMBIA RIVER GORGE NATIONAL SCENIC AREA  
LOCATED IN A PORTION OF GOVT. LOTS 3 & 4 OF  
SECTION 6, T. 2 N., R. 10 E., W.M. AND IN PORTIONS  
OF GOVT. LOTS 1, 2, 3 & 4, THE SW 1/4 OF THE SW 1/4  
AND THE NW 1/4 OF SECTION 1, THE SE 1/4 OF  
THE NE 1/4 AND THE SE 1/4 OF SECTION 2  
AND THE NW 1/4 AND THE SW 1/4 OF SECTION 12  
T. 2 N., R. 9 E., W.M., HOOD RIVER COUNTY, OREGON  
TASK ORDER NO. 1204T020F0039

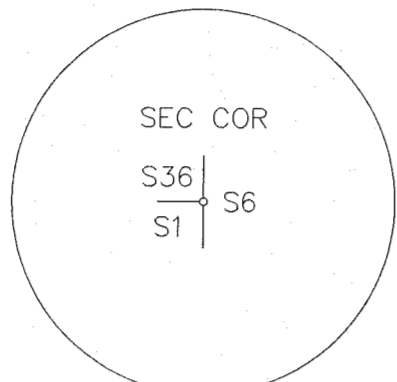
HOOD RIVER COUNTY  
SURVEYORS OFFICE  
SURVEY NO. 2022-021  
FILED DATE: 4/29/2022  
BY: RD

REGISTERED  
PROFESSIONAL  
LAND SURVEYOR  
*Daniel A. Renton*  
OREGON  
JUNE 30, 1997  
DANIEL A. RENTON  
2830

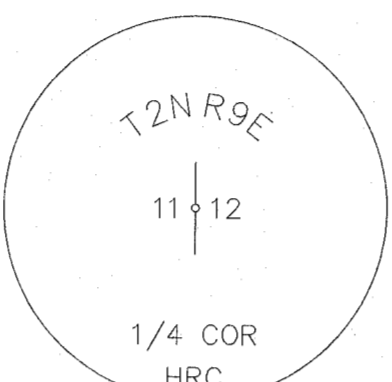
Expires 12-31-2022



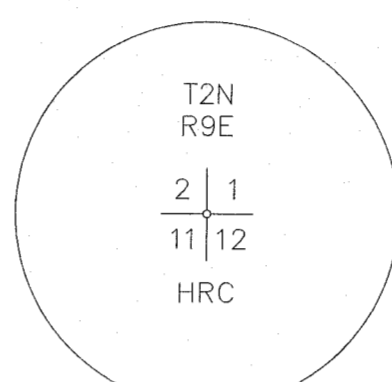
CORNER CODE: A-3  
GCDB: 140700  
POINT NUMBER: 271



CORNER CODE: A-25  
GCDB: 700700  
POINT NUMBER: 272



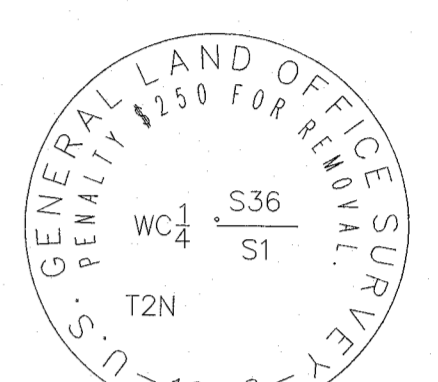
CORNER CODE: G-21  
GCDB: 600540  
POINT NUMBER: 275



CORNER CODE: E-21  
GCDB: 600600  
POINT NUMBER: 278



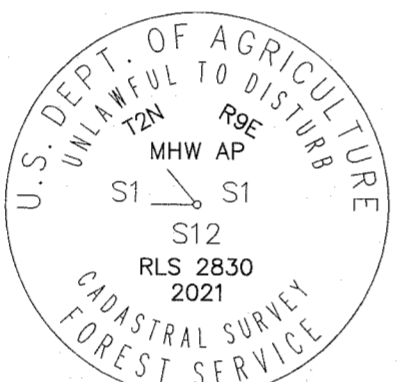
CORNER CODE: C-21  
GCDB: 600640  
POINT NUMBER: 280



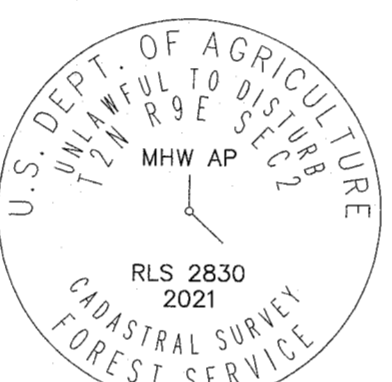
POINT NUMBER: 281



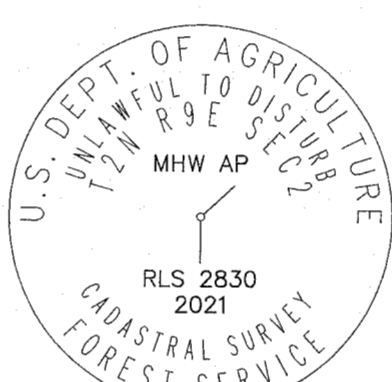
CORNER CODE: J-21  
GCDB: 600500  
POINT NUMBER: 415



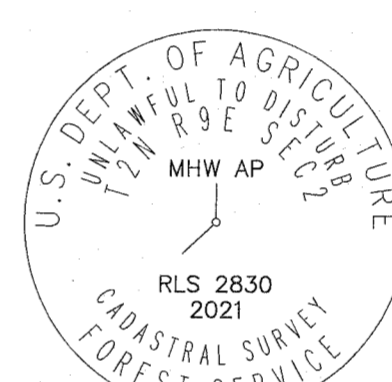
POINT NUMBER: 416



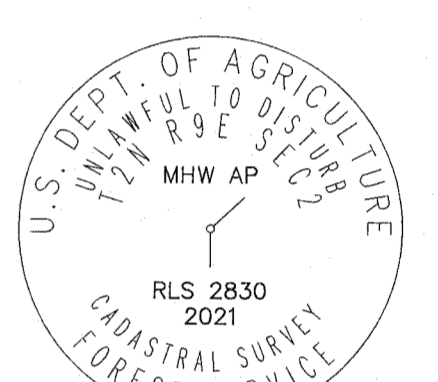
POINT NUMBER: 418



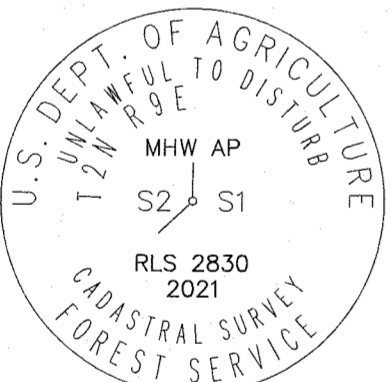
POINT NUMBER: 419



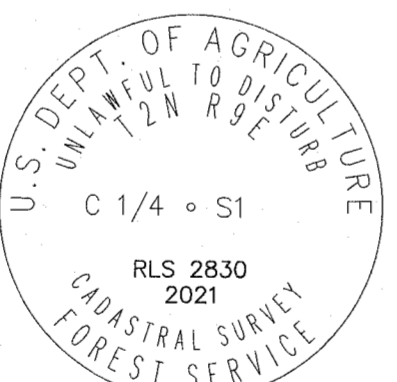
POINT NUMBER: 420



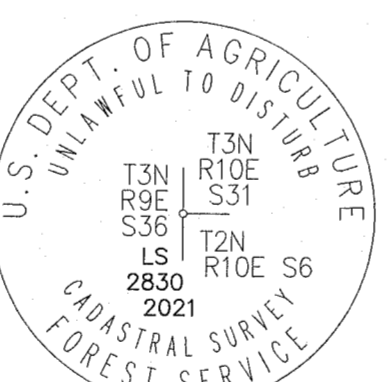
POINT NUMBER: 421



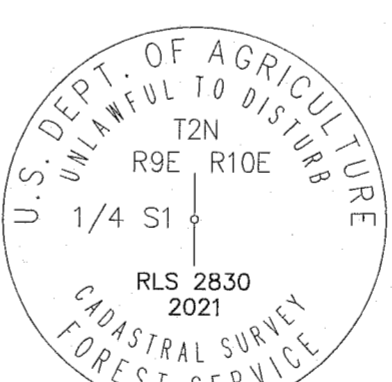
POINT NUMBER: 422



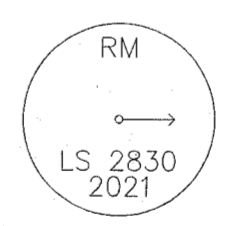
CORNER CODE: C-23  
GCDB: 640640  
POINT NUMBER: 423



CORNER CODE: A-1  
GCDB: 100700  
POINT NUMBER: 424

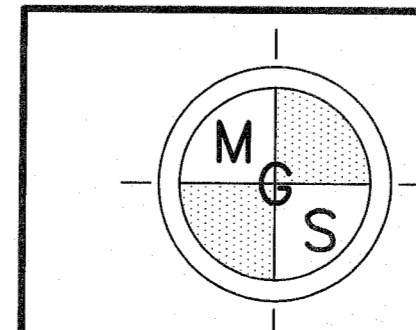


CORNER CODE: C-25  
GCDB: 700640  
POINT NUMBER: 425



REFERENCE MONUMENT  
(TYPICAL)

DWG FILE: 201785-WILDERNESS.DWG



MINISTER-GLAESER  
SURVEYING INC.  
2200 E. EVERGREEN BLVD.  
VANCOUVER, WA 98661  
(360) 694-3313

SCALE: NTS  
JOB NO. 20-178  
DATE: 3/29/2022  
CALC BY: DAR  
DRAWN BY: RDH  
CHECKED BY: DAR  
SHEET 16 OF 17

CS# 2022 021



**NARRATIVE:**

THE PURPOSE OF THIS SURVEY WAS TO SURVEY THE "MITCHELL POINT" OPTION AS OUTLINED IN THE UNITED STATES FOREST SERVICE IDIQ CONTRACT 1204T020D0010, TASK ORDER 1204T020F0039. THIS CONSISTED OF THE FOLLOWING:

- BOUNDARY LINE MARKING (NEW LINE) = 2.6 MILES
- WILDERNESS BOUNDARY MARKING (NEW LINE) = 2.0 MILES
- VERIFY/MAINTAIN CORNERS = 12
- REESTABLISH CORNERS = 4
- ESTABLISH CORNERS = 7
- NEW MONUMENTATION = 11
- CORNER SEARCHES = 8
- MAINTAIN EXISTING CORNERS = 4

THE SURVEY TOOK PLACE IN SECTIONS 1, 2, AND 12, TOWNSHIP 2 NORTH, RANGE 9 EAST, AND SECTION 6, TOWNSHIP 2 NORTH, RANGE 10 EAST, WILLAMETTE MERIDIAN, HOOD RIVER COUNTY, OREGON.

LISTED BELOW IS THE BOUNDARY RESOLUTION:

**WEST LINE OF THE SOUTHWEST QUARTER OF SECTION 12, TOWNSHIP 2 NORTH, RANGE 9 EAST, WILLAMETTE MERIDIAN, HOOD RIVER COUNTY, OREGON.**

HELD THE LINE BETWEEN THE SET MONUMENT (415) AT THE SOUTHWEST CORNER OF SAID SECTION 12 AND THE FOUND AND HELD MONUMENT (275) AT THE NORTHWEST CORNER OF SAID SOUTHWEST QUARTER. THE SET MONUMENT (415) AT THE SOUTHWEST CORNER OF SAID SECTION 12 WAS RESET FROM EXISTING BEARING TREES.

**WEST LINE OF THE NORTHWEST QUARTER OF SECTION 12, TOWNSHIP 2 NORTH, RANGE 9 EAST, WILLAMETTE MERIDIAN, HOOD RIVER COUNTY, OREGON.**

HELD THE LINE BETWEEN FOUND AND HELD MONUMENT (275) AT THE SOUTHWEST CORNER OF SAID NORTHWEST QUARTER AND FOUND AND HELD MONUMENT (278) AT THE NORTHWEST CORNER OF SAID NORTHWEST QUARTER.

**EAST LINE OF THE "MARK O. HATFIELD" WILDERNESS BOUNDARY LOCATED IN THE NORTHEAST QUARTER AND SOUTHEAST QUARTER OF SECTION 2 AND THE SOUTHWEST QUARTER OF SECTION 1, ALL IN TOWNSHIP 2 NORTH, RANGE 9 EAST, WILLAMETTE MERIDIAN, HOOD RIVER COUNTY, OREGON.**

SET A MONUMENT (416) AT A FIXED DISTANCE OF 148.66 FEET, EASTERLY ALONG THE SOUTH LINE OF THE SOUTHWEST QUARTER OF SAID SECTION 1 FROM FOUND AND HELD MONUMENT (278). THE NEXT FIVE ANGLE POINT MONUMENTS SET (418, 419, 420 AND 421) WERE SET MORE OR LESS WITHIN 30 FEET OF A LATITUDE AND LONGITUDE THAT WAS PROVIDED BY THE UNITED STATES FOREST SERVICE. SET A MONUMENT (422) AT A FIXED DISTANCE OF 205.26 FEET, SOUTHERLY ALONG THE EAST LINE OF THE NORTHEAST QUARTER OF SECTION 2 FROM FOUND AND HELD MONUMENT (279).

**NORTH LINE OF THE SOUTHWEST QUARTER OF THE NORTHWEST QUARTER OF SECTION 1, TOWNSHIP 2 NORTH, RANGE 9 EAST, WILLAMETTE MERIDIAN, HOOD RIVER COUNTY, OREGON.**

HELD THE LINE BETWEEN FOUND AND HELD MONUMENT (279) AT THE NORTHWEST CORNER OF SAID SOUTHWEST QUARTER AND FOUND AND HELD MONUMENT (277) AT THE NORTHEAST CORNER OF SAID SOUTHWEST QUARTER.

**EAST LINE OF THE SOUTHWEST QUARTER OF THE NORTHWEST QUARTER OF SECTION 1, TOWNSHIP 2 NORTH, RANGE 9 EAST, WILLAMETTE MERIDIAN, HOOD RIVER COUNTY, OREGON.**

HELD THE LINE BETWEEN FOUND AND HELD MONUMENT (277) AT THE NORTHEAST CORNER OF SAID SOUTHWEST QUARTER AND FOUND AND HELD MONUMENT (276) AT THE SOUTHEAST CORNER OF SAID SOUTHWEST QUARTER.

**SOUTH LINE OF THE SOUTHEAST QUARTER OF THE NORTHWEST QUARTER OF SECTION 1, TOWNSHIP 2 NORTH, RANGE 9 EAST, WILLAMETTE MERIDIAN, HOOD RIVER COUNTY, OREGON.**

HELD THE LINE BETWEEN FOUND AND HELD MONUMENT (276) AT THE SOUTHWEST CORNER OF SAID SOUTHEAST QUARTER AND SET MONUMENT (423) AT THE SOUTHEAST CORNER OF SAID SOUTHEAST QUARTER (CENTER QUARTER). THE CENTER QUARTER WAS ESTABLISHED AT THE INTERSECTION OF A LINE DRAWN BETWEEN THE COMPUTED NORTH QUARTER CORNER OF SAID SECTION 1 AND THE FOUND AND HELD SOUTH QUARTER CORNER OF SAID SECTION 1 (262) AND A LINE DRAWN BETWEEN FOUND AND HELD MONUMENT (276) AT THE SOUTHWEST CORNER OF SAID SOUTHEAST QUARTER AND THE SINGLE PROPORTION SET EAST QUARTER CORNER (425) OF SAID SECTION 1.

**EAST LINE OF THE SOUTHEAST QUARTER OF THE NORTHWEST QUARTER AND GOVERNMENT LOT 3 OF SECTION 1, TOWNSHIP 2 NORTH, RANGE 9 EAST, WILLAMETTE MERIDIAN, HOOD RIVER COUNTY, OREGON.**

HELD THE LINE BETWEEN THE SET CENTER QUARTER CORNER (423) AND THE COMPUTED NORTH QUARTER CORNER OF SAID SECTION 1. THE NORTH QUARTER CORNER OF SAID SECTION 1 WAS COMPUTED BY PROJECTING THE LINE WEST THE GENERAL LAND OFFICE (GLO) PLAT DISTANCE OF 1.92 CHAINS (126.72 FEET) FROM THE FOUND AND HELD MONUMENT GLO WITNESS CORNER (281). THE LINE WAS ONLY POSTED TO A POINT 845 FEET SOUTH OF THE COMPUTED NORTH QUARTER CORNER OF SAID SECTION 1 DUE TO THE INACCESSIBLE CANYON.

**NORTH LINE OF THE SOUTHEAST QUARTER OF THE NORTHWEST QUARTER AND GOVERNMENT LOT 3 OF SECTION 1, TOWNSHIP 2 NORTH, RANGE 9 EAST, WILLAMETTE MERIDIAN, HOOD RIVER COUNTY, OREGON.**

HELD THE LINE BETWEEN THE COMPUTED NORTH QUARTER CORNER OF SAID SECTION 1 AND THE FOUND AND HELD MONUMENT (272) AT THE NORTHEAST CORNER OF SAID SECTION 1.

**WEST LINE OF GOVERNMENT LOT 4 OF SECTION 6, TOWNSHIP 2 NORTH, RANGE 10 EAST, WILLAMETTE MERIDIAN, HOOD RIVER COUNTY, OREGON.**

HELD THE LINE BETWEEN HELD MONUMENT (272) AT THE NORTHEAST CORNER OF SAID SECTION 1 AND SET MONUMENT (424) AT THE NORTHWEST CORNER OF SAID SECTION 6. THE SET MONUMENT (424) AT THE NORTHWEST CORNER OF SAID SECTION 6 WAS RESET FROM EXISTING BEARING TREES.

**NORTH LINE OF GOVERNMENT LOTS 3 & 4 OF SECTION 6, TOWNSHIP 2 NORTH, RANGE 10 EAST, WILLAMETTE MERIDIAN, HOOD RIVER COUNTY, OREGON.**

HELD THE LINE BETWEEN SET MONUMENT (424) AT THE NORTHWEST CORNER OF SAID SECTION 6 AND FOUND MONUMENT (271) AT THE NORTHEAST CORNER OF THE NORTHWEST QUARTER OF SAID SECTION 6. SET MONUMENT (424) AT THE NORTHWEST CORNER OF SAID SECTION 6 WAS RESET FROM EXISTING BEARING TREES.

**EAST LINE OF GOVERNMENT LOT 3 OF SECTION 6, TOWNSHIP 2 NORTH, RANGE 10 EAST, WILLAMETTE MERIDIAN, HOOD RIVER COUNTY, OREGON.**

HELD THE LINE BETWEEN THE FOUND AND HELD MONUMENT (271) AT THE NORTH QUARTER CORNER OF SAID SECTION SIX AND THE FOUND AND HELD MONUMENT (269) AT THE SOUTHEAST CORNER OF SAID GOVERNMENT LOT 3.

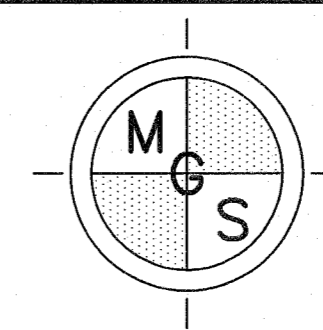
# RECORD OF SURVEY

MARK O HATFIELD WILDERNESS AND GORGE FACE ADDITION  
 BOUNDARY CADASTRAL SURVEY IN THE  
 COLUMBIA RIVER GORGE NATIONAL SCENIC AREA  
 LOCATED IN A PORTION OF GOVT. LOTS 3 & 4 OF  
 SECTION 6, T. 2 N., R. 10 E., W.M. AND IN PORTIONS  
 OF GOVT. LOTS 1, 2, 3 & 4, THE SW 1/4 OF THE SW 1/4  
 AND THE NW 1/4 OF SECTION 1, THE SE 1/4 OF  
 THE NE 1/4 AND THE SE 1/4 OF SECTION 2  
 AND THE NW 1/4 AND THE SW 1/4 OF SECTION 12  
 T. 2 N., R. 9 E., W.M., HOOD RIVER COUNTY, OREGON  
 TASK ORDER NO. 1204T020F0039

HOOD RIVER COUNTY  
 SURVEYORS OFFICE  
 SURVEY NO. 2022-022  
 FILED DATE: 4/20/2022  
 BY: RL

REGISTERED  
 PROFESSIONAL  
 LAND SURVEYOR  
*Daniel A. Renton*  
 OREGON  
 JUNE 30, 1997  
 DANIEL A. RENTON  
 2830

Expires 12-31-2022



MINISTER-GLAESER  
 SURVEYING INC.  
 2200 E. EVERGREEN BLVD.  
 VANCOUVER, WA 98661  
 (360) 694-3313

SCALE: N/A  
 JOB NO. 20-178  
 DATE: 3/29/2022  
 CALC BY: DAR  
 DRAWN BY: RDH  
 CHECKED BY: DAR  
 SHEET 17 OF 17

DWG FILE: 201785-WILDERNESS.DWG

CS# 2022022