

RECORD OF SURVEY FOR PAMELA SIMPSON
 THE NORTH HALF OF LOTS 1 AND 16, SPANGLER'S SUBDIVISION
 IN THE N.W. 1/4 OF SECTION 36, TOWNSHIP 3 NORTH, RANGE 10 EAST W.M.
 CITY OF HOOD RIVER, HOOD RIVER COUNTY, OREGON.

HOOD RIVER COUNTY
 SURVEYOR'S OFFICE
 Survey No: 2021 046
 Filed Date: 12/2/2021
 By: BC

NARRATIVE:

THE PURPOSE OF THIS SURVEY IS TO VERIFY AND MONUMENT THE PROPERTY BOUNDARY DESCRIBED BY DEED 2003-4674 AS THE NORTH HALF OF LOTS 1 AND 16, SPANGLER'S SUBDIVISION.

MONUMENTS WERE FOUND AND HELD AT THE NW AND SW CORNERS OF LOT 16 AS PER THE ADJACENT PARTITION PLAT 2019-09P TO THE WEST. A MONUMENT WAS FOUND AND ACCEPTED AS THE NE CORNER OF LOT 1 AS PER THE ADJACENT PARTITION PLAT 2000-14P TO THE NORTH. THE MONUMENT FOUND AT THE SE CORNER OF LOT 1 WAS ACCEPTED AS THE ORIGINAL SUBDIVISION LOT CORNER.

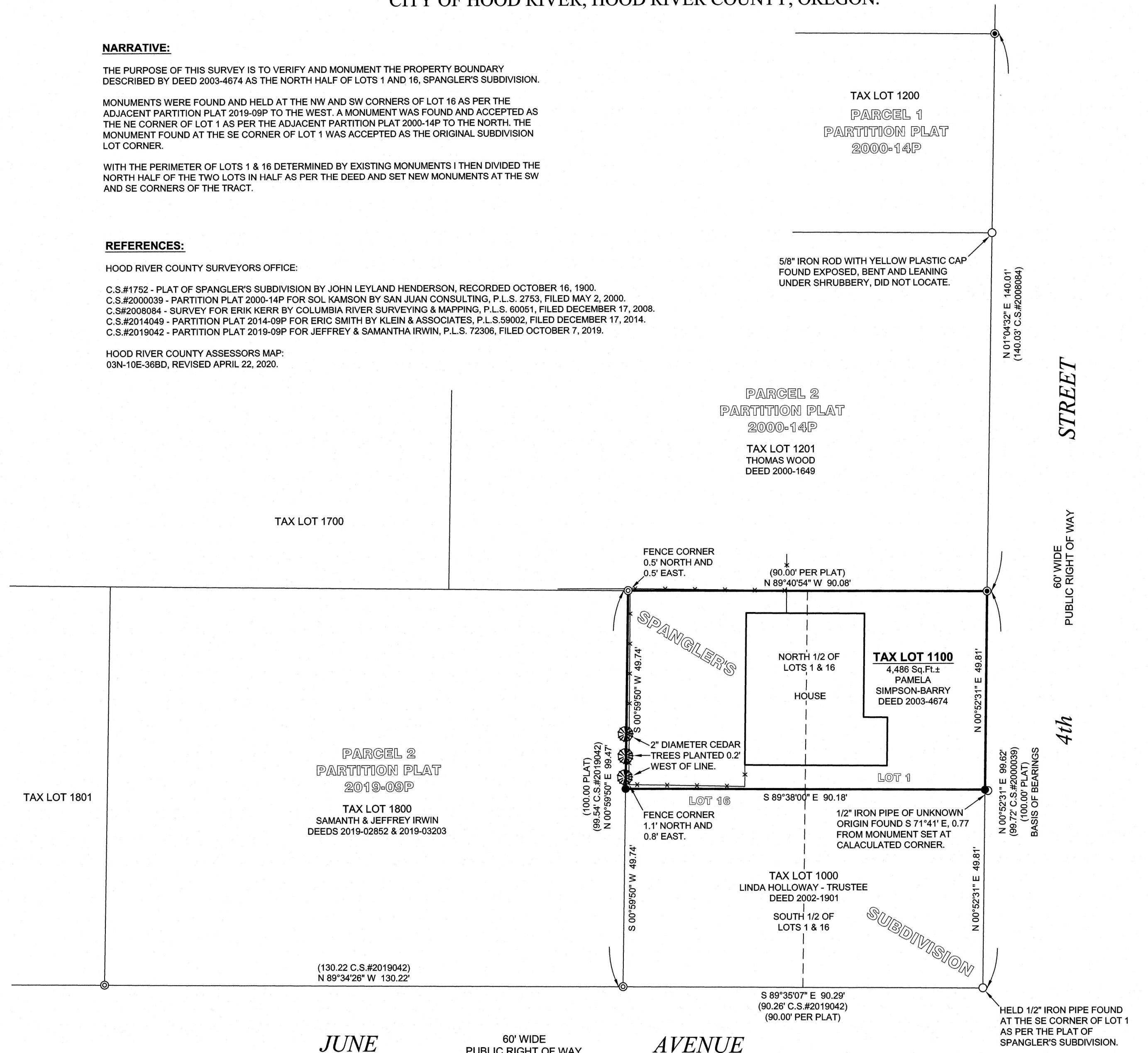
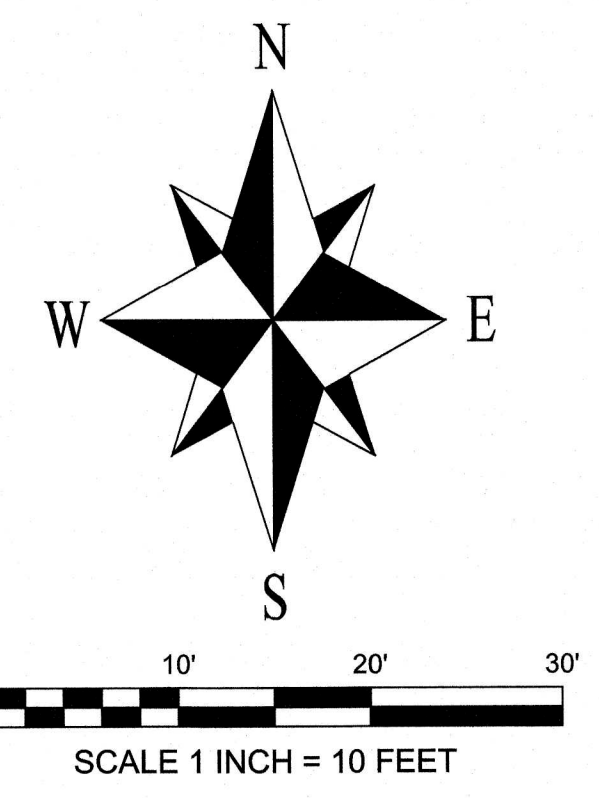
WITH THE PERIMETER OF LOTS 1 & 16 DETERMINED BY EXISTING MONUMENTS I THEN DIVIDED THE NORTH HALF OF THE TWO LOTS IN HALF AS PER THE DEED AND SET NEW MONUMENTS AT THE SW AND SE CORNERS OF THE TRACT.

REFERENCES:

HOOD RIVER COUNTY SURVEYORS OFFICE:

- C.S.#1752 - PLAT OF SPANGLER'S SUBDIVISION BY JOHN LEYLAND HENDERSON, RECORDED OCTOBER 16, 1900.
- C.S.#2000039 - PARTITION PLAT 2000-14P FOR SOL KAMSON BY SAN JUAN CONSULTING, P.L.S. 2753, FILED MAY 2, 2000.
- C.S.#2008084 - SURVEY FOR ERIK KERR BY COLUMBIA RIVER SURVEYING & MAPPING, P.L.S. 60051, FILED DECEMBER 17, 2014.
- C.S.#2014049 - PARTITION PLAT 2014-09P FOR ERIC SMITH BY KLEIN & ASSOCIATES, P.L.S.59002, FILED DECEMBER 17, 2014.
- C.S.#2019042 - PARTITION PLAT 2019-09P FOR JEFFREY & SAMANTHA IRWIN, P.L.S. 72306, FILED OCTOBER 7, 2019.

HOOD RIVER COUNTY ASSESSORS MAP:
 03N-10E-36BD, REVISED APRIL 22, 2020.



BASIS OF BEARINGS:

BETWEEN THE MONUMENTS FOUND AT THE SE & NE CORNERS OF LOT 1 OF SPANGLER'S ADDITION AS PER C.S.#2008084.

SYMBOL LEGEND:

- SET 5/8" X 30" IRON ROD WITH BLUE PLASTIC CAP INSCRIBED "CROSS P.L.S. 60051" JUNE 11, 2021.
- ⊙ HELD 5/8" IRON ROD WITH RED PLASTIC CAP INSCRIBED "TERRA L.S.72306" FROM PARTITION PLAT 2019-09P, C.S.#2019042.
- ⊙ HELD 5/8" IRON ROD WITH YELLOW PLASTIC CAP INSCRIBED "WA 29600 OR2753" FROM PARTITION PLAT 2000-14P, C.S.#2000039.
- FOUND MONUMENT OF RECORD AS NOTED
- (50.00') PLAT DIMENSION OR RECORD DIMENSION AS NOTED
- FENCE

REGISTERED
 PROFESSIONAL
 LAND SURVEYOR

 OREGON
 JANUARY 15, 2002
 BRADLEY J. CROSS
 60051
 RENEWS: 12/31/2021

PROJECT NUMBER: 2021022
 DATE OF MAP: NOVEMBER 29, 2021
 DATE OF MONUMENTATION: JUNE 11, 2021
 HOOD RIVER COUNTY ASSESSORS MAP: 03N-10E-36BD

**COLUMBIA RIVER
 SURVEYING
 & MAPPING**
 1767 12th St, #191
 HOOD RIVER, OREGON, 97031
 PHONE: 541-386-9002
 EMAIL: INFO@COLUMBIASURVEYING.COM

CS# 2021 046