

RECORD OF SURVEY FOR JAMES LOMBARDO

LOCATED IN BLOCK 9 OF HULL'S SUBDIVISION
 IN THE N.W. 1/4 OF SECTION 36, TOWNSHIP 3 NORTH, RANGE 10 EAST W.M.
 CITY OF HOOD RIVER, HOOD RIVER COUNTY, OREGON.

HOOD RIVER COUNTY
 SURVEYOR'S OFFICE

Survey No: 2021 045

Filed Date: 12/2/2021

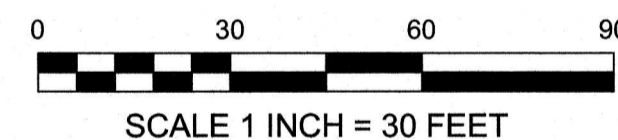
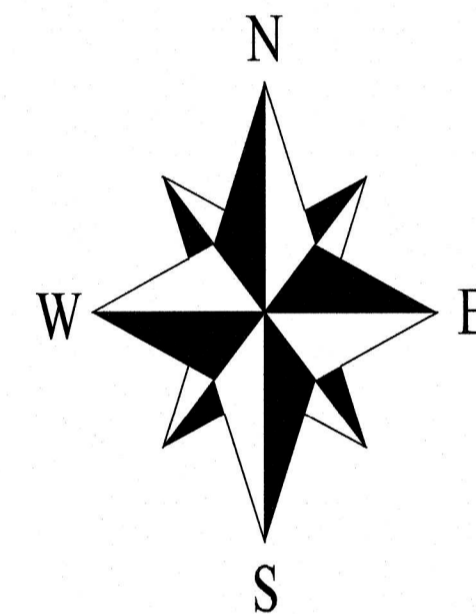
By: BC

SYMBOL LEGEND:

- SET 5/8" X 30" IRON ROD WITH BLUE PLASTIC CAP INSCRIBED "CROSS P.L.S. 60051" APRIL 16, 2021.
- FOUND MONUMENT OF RECORD AS NOTED
- CALCULATED CORNER - NOT FOUND OR SET
- (50.00') PLAT DIMENSION OR RECORD DIMENSION AS NOTED
- *-*- FENCE

BASIS OF BEARINGS:

NAD 83(2011) EPOCH 2010.00 WITH GRID BEARINGS AND DISTANCES FROM COORDINATES PROJECTED TO THE OREGON COORDINATE REFERENCE SYSTEM (OCRS), COLUMBIA RIVER EAST ZONE, INTERNATIONAL FEET.



REGISTERED
 PROFESSIONAL
 LAND SURVEYOR

BC

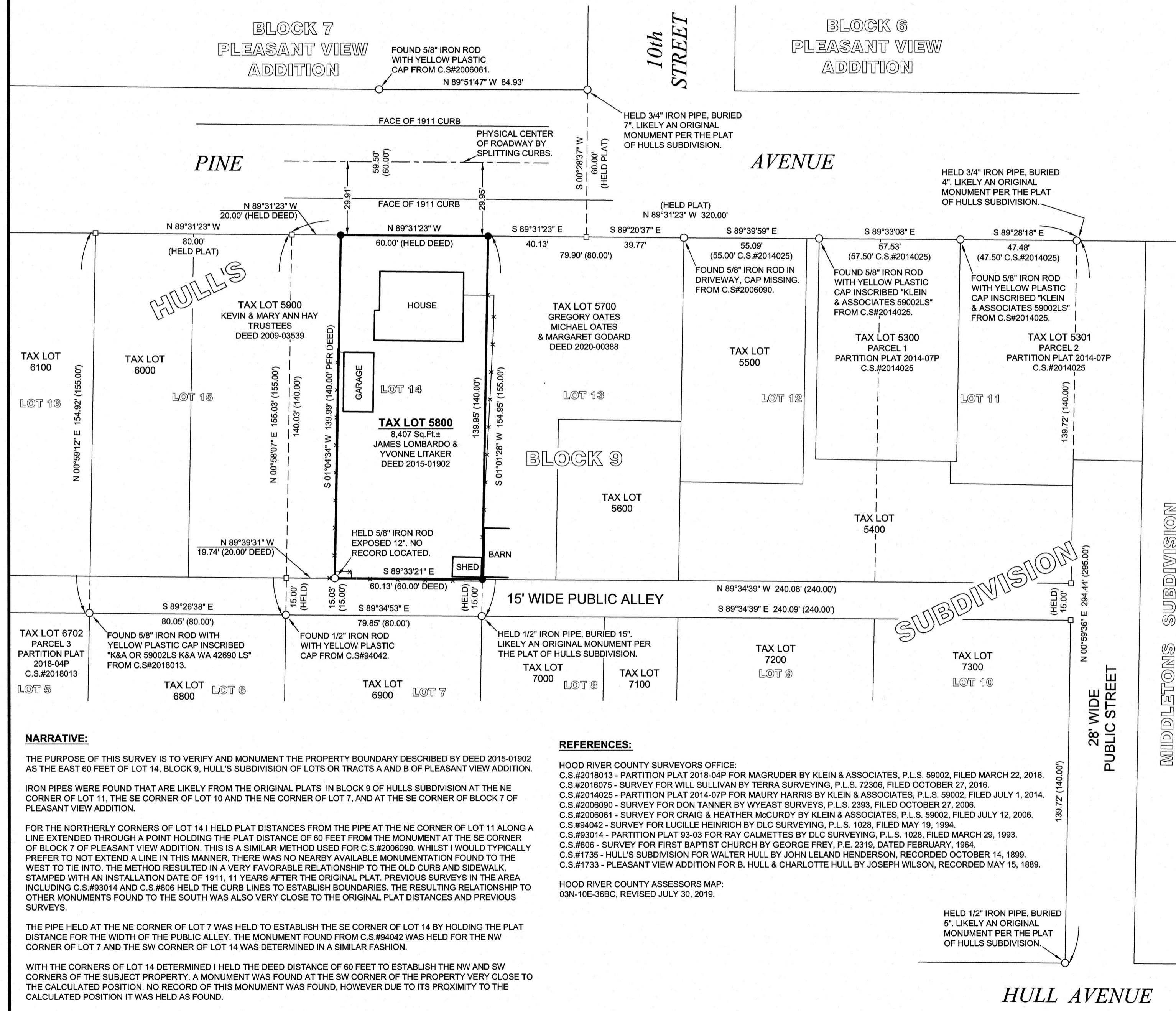
OREGON
 JANUARY 15, 2002
 BRADLEY J. CROSS
 60051

RENEWS: 12/31/2021

PROJECT NUMBER: 2021009
 DATE OF MAP: NOVEMBER 29, 2021
 DATE OF MONUMENTATION: APRIL 16, 2021
 HOOD RIVER COUNTY ASSESSORS MAP: 03N-10E-36BC

**COLUMBIA RIVER
 SURVEYING
 & MAPPING**

1767 12th St, #191
 HOOD RIVER, OREGON, 97031
 PHONE: 541-386-9002
 EMAIL: INFO@COLUMBIASURVEYING.COM



NARRATIVE:

THE PURPOSE OF THIS SURVEY IS TO VERIFY AND MONUMENT THE PROPERTY BOUNDARY DESCRIBED BY DEED 2015-01902 AS THE EAST 60 FEET OF LOT 14, BLOCK 9, HULL'S SUBDIVISION OF LOTS OR TRACTS A AND B OF PLEASANT VIEW ADDITION.

IRON PIPES WERE FOUND THAT ARE LIKELY FROM THE ORIGINAL PLATS IN BLOCK 9 OF HULL'S SUBDIVISION AT THE NE CORNER OF LOT 11, THE SE CORNER OF LOT 10 AND THE NE CORNER OF LOT 7, AND AT THE SE CORNER OF BLOCK 7 OF PLEASANT VIEW ADDITION.

FOR THE NORTHERLY CORNERS OF LOT 14 I HELD PLAT DISTANCES FROM THE PIPE AT THE NE CORNER OF LOT 11 ALONG A LINE EXTENDED THROUGH A POINT HOLDING THE PLAT DISTANCE OF 60 FEET FROM THE MONUMENT AT THE SE CORNER OF BLOCK 7 OF PLEASANT VIEW ADDITION. THIS IS A SIMILAR METHOD USED FOR C.S.#2006090. WHILE IT WOULD TYPICALLY PREFER TO NOT EXTEND A LINE IN THIS MANNER, THERE WAS NO NEARBY AVAILABLE MONUMENTATION FOUND TO THE WEST TO TIE INTO. THE METHOD RESULTED IN A VERY FAVORABLE RELATIONSHIP TO THE OLD CURB AND SIDEWALK, STAMPED WITH AN INSTALLATION DATE OF 1911, 11 YEARS AFTER THE ORIGINAL PLAT. PREVIOUS SURVEYS IN THE AREA INCLUDING C.S.#93014 AND C.S.#806 HELD THE CURB LINES TO ESTABLISH BOUNDARIES. THE RESULTING RELATIONSHIP TO OTHER MONUMENTS FOUND TO THE SOUTH WAS ALSO VERY CLOSE TO THE ORIGINAL PLAT DISTANCES AND PREVIOUS SURVEYS.

THE PIPE HELD AT THE NE CORNER OF LOT 7 WAS HELD TO ESTABLISH THE SE CORNER OF LOT 14 BY HOLDING THE PLAT DISTANCE FOR THE WIDTH OF THE PUBLIC ALLEY. THE MONUMENT FOUND FROM C.S.#94042 WAS HELD FOR THE NW CORNER OF LOT 7 AND THE SW CORNER OF LOT 14 WAS DETERMINED IN A SIMILAR FASHION.

WITH THE CORNERS OF LOT 14 DETERMINED I HELD THE DEED DISTANCE OF 60 FEET TO ESTABLISH THE NW AND SW CORNERS OF THE SUBJECT PROPERTY. A MONUMENT WAS FOUND AT THE SW CORNER OF THE PROPERTY VERY CLOSE TO THE CALCULATED POSITION. NO RECORD OF THIS MONUMENT WAS FOUND, HOWEVER DUE TO ITS PROXIMITY TO THE CALCULATED POSITION IT WAS HELD AS FOUND.

REFERENCES:

- HOOD RIVER COUNTY SURVEYORS OFFICE:
- C.S.#2018013 - PARTITION PLAT 2018-04P FOR MAGRUDER BY KLEIN & ASSOCIATES, P.L.S. 59002, FILED MARCH 22, 2018.
- C.S.#2016075 - SURVEY FOR WILL SULLIVAN BY TERRA SURVEYING, P.L.S. 72306, FILED OCTOBER 27, 2016.
- C.S.#2014025 - PARTITION PLAT 2014-07P FOR MAURY HARRIS BY KLEIN & ASSOCIATES, P.L.S. 59002, FILED JULY 1, 2014.
- C.S.#2006090 - SURVEY FOR DON TANNER BY WYEAST SURVEYS, P.L.S. 2393, FILED OCTOBER 27, 2006.
- C.S.#2006061 - SURVEY FOR CRAIG & HEATHER McCURDY BY KLEIN & ASSOCIATES, P.L.S. 59002, FILED JULY 12, 2006.
- C.S.#94042 - SURVEY FOR LUCILLE HEINRICH BY DLC SURVEYING, P.L.S. 1028, FILED MAY 19, 1994.
- C.S.#93014 - PARTITION PLAT 93-03 FOR RAY CALMETTES BY DLC SURVEYING, P.L.S. 1028, FILED MARCH 29, 1993.
- C.S.#806 - SURVEY FOR FIRST BAPTIST CHURCH BY GEORGE FREY, P.E. 2319, DATED FEBRUARY, 1964.
- C.S.#1735 - HULL'S SUBDIVISION FOR WALTER HULL BY JOHN LELAND HENDERSON, RECORDED OCTOBER 14, 1899.
- C.S.#1733 - PLEASANT VIEW ADDITION FOR B. HULL & CHARLOTTE HULL BY JOSEPH WILSON, RECORDED MAY 15, 1889.

HOOD RIVER COUNTY ASSESSORS MAP:
 03N-10E-36BC, REVISED JULY 30, 2019.

CS# 2021 045