

TERRA SURVEYING
BOUNDARY LINE SURVEY
 for
HOOD RIVER COUNTY FORESTRY DEPARTMENT

HOOD RIVER COUNTY
 SURVEYOR'S OFFICE

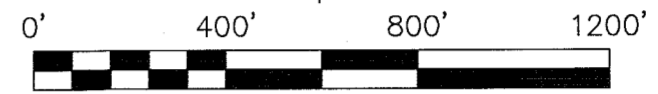
CS# 2021 035

DATE FILED: 10/26/2021

BY: *ME*

CS# 2021 035

LOCATION OF SURVEY:
 SECTIONS 19 AND 20, TOWNSHIP 2 NORTH, RANGE 10 EAST, WILLAMETTE MERIDIAN,
 HOOD RIVER COUNTY, OREGON.



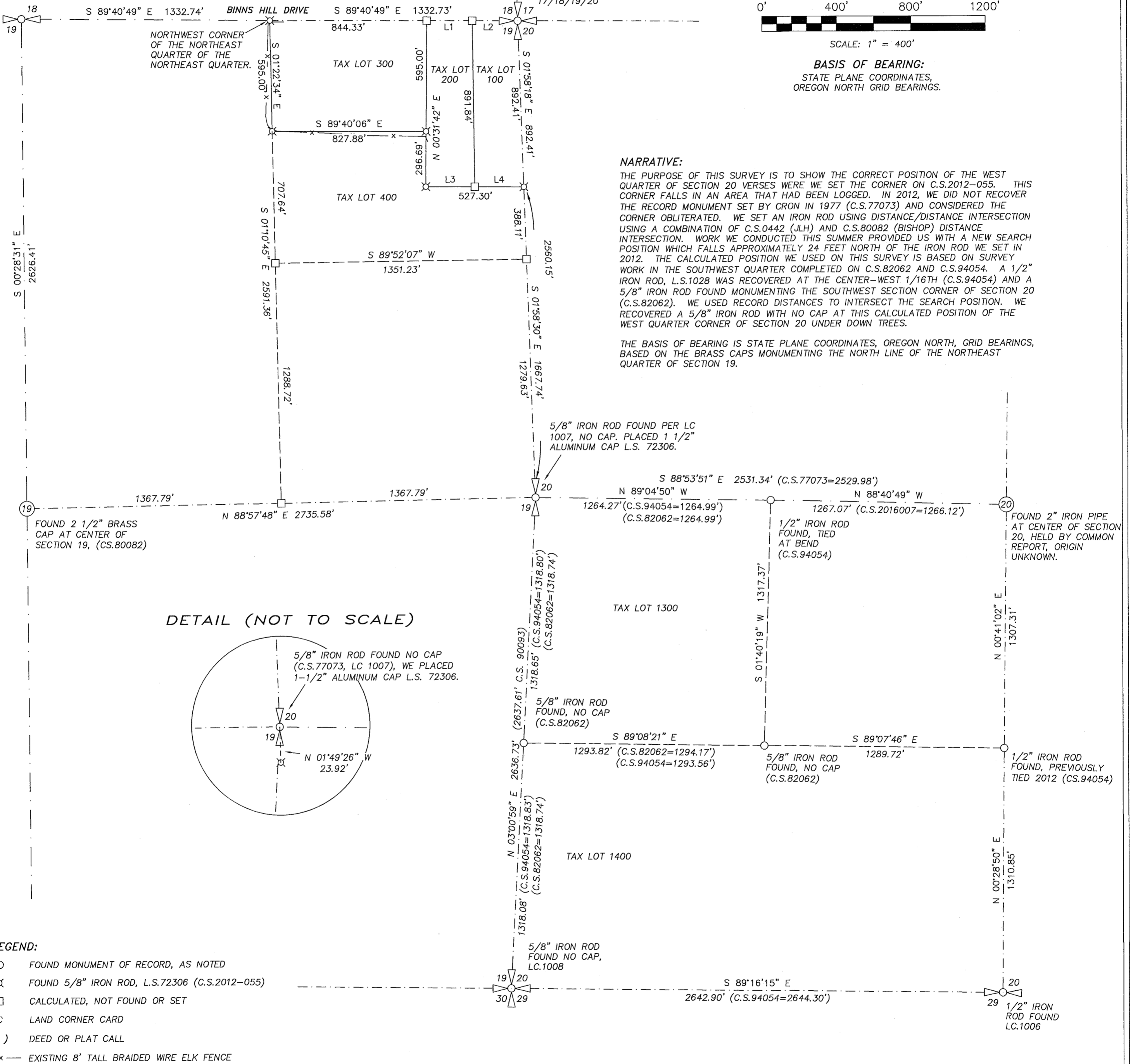
SCALE: 1" = 400'

BASIS OF BEARING:
 STATE PLANE COORDINATES,
 OREGON NORTH GRID BEARINGS.

FOUND 2" BRASS CAP OF
 RECORD IN A MONUMENT
 BOX AT 1/4 CORNER, LC.999

BASIS OF BEARING
 S 89°40'49" E 2665.47'

FOUND 3" BRASS CAP
 IN A MONUMENT BOX
 AT SECTION CORNER
 17/18/19/20

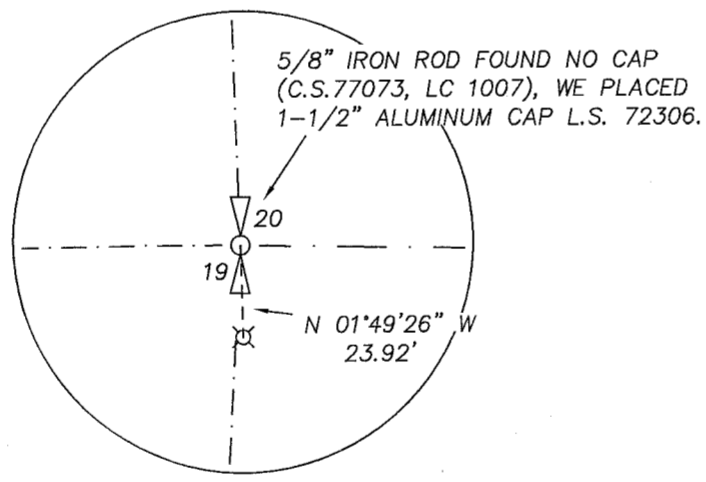


NARRATIVE:

THE PURPOSE OF THIS SURVEY IS TO SHOW THE CORRECT POSITION OF THE WEST QUARTER OF SECTION 20 VERSES WHERE WE SET THE CORNER ON C.S.2012-055. THIS CORNER FALLS IN AN AREA THAT HAD BEEN LOGGED. IN 2012, WE DID NOT RECOVER THE RECORD MONUMENT SET BY CRON IN 1977 (C.S.77073) AND CONSIDERED THE CORNER OBLITERATED. WE SET AN IRON ROD USING DISTANCE/DISTANCE INTERSECTION USING A COMBINATION OF C.S.0442 (JLH) AND C.S.80082 (BISHOP) DISTANCE INTERSECTION. WORK WE CONDUCTED THIS SUMMER PROVIDED US WITH A NEW SEARCH POSITION WHICH FALLS APPROXIMATELY 24 FEET NORTH OF THE IRON ROD WE SET IN 2012. THE CALCULATED POSITION WE USED ON THIS SURVEY IS BASED ON SURVEY WORK IN THE SOUTHWEST QUARTER COMPLETED ON C.S.82062 AND C.S.94054. A 1/2" IRON ROD, L.S.1028 WAS RECOVERED AT THE CENTER-WEST 1/16TH (C.S.94054) AND A 5/8" IRON ROD FOUND MONUMENTING THE SOUTHWEST SECTION CORNER OF SECTION 20 (C.S.82062). WE USED RECORD DISTANCES TO INTERSECT THE SEARCH POSITION. WE RECOVERED A 5/8" IRON ROD WITH NO CAP AT THIS CALCULATED POSITION OF THE WEST QUARTER CORNER OF SECTION 20 UNDER DOWN TREES.

THE BASIS OF BEARING IS STATE PLANE COORDINATES, OREGON NORTH GRID BEARINGS, BASED ON THE BRASS CAPS MONUMENTING THE NORTH LINE OF THE NORTHEAST QUARTER OF SECTION 19.

DETAIL (NOT TO SCALE)



LEGEND:

- FOUND MONUMENT OF RECORD, AS NOTED
- ⊗ FOUND 5/8" IRON ROD, L.S.72306 (C.S.2012-055)
- CALCULATED, NOT FOUND OR SET
- LC LAND CORNER CARD
- () DEED OR PLAT CALL
- x — EXISTING 8' TALL BRAIDED WIRE ELK FENCE

REFERENCES:

- C.S. 0442, MAP OF NORTH 1/4 OF SEC. 19 BY J.L.H. FILE DATE UNKNOWN.
- C.S. 0444, SURVEY AND DESCRIPTION BY C.H. HURLBURT, JULY 31, 1940.
- C.S. 0445, SURVEY AND DESCRIPTION FOR KOBAYASHI BY BUTTONS, NOVEMBER 21, 1947.
- C.S. 0446, PLAT OF SURVEY OF S.E. 1/4 OF S.E. 1/4 OF SEC. 19 BY L.A. HENDERSON, OCTOBER 27, 1911.
- C.S. 77073, SURVEY FOR MARTHA FROST BY CRON, FILED AUGUST 2, 1977.
- C.S. 79047, PROPERTY SURVEY FOR DEWEY KELLER BY BISHOP, FILED APRIL 9, 1979.
- C.S. 80082, SURVEY FOR CHAMPION TIMBERLANDS BY BISHOP, FILED SEPTEMBER 18, 1980.
- C.S. 82062, SURVEY FOR HOOD RIVER COUNTY FOREST BY ANTHONY KLEIN, FILED OCTOBER 20, 1982.
- C.S. 83051, SURVEY FOR HOOD RIVER COUNTY BY RICHARD ARNOLD, FILED DECEMBER 16, 1983.
- C.S. 90093, SURVEY FOR WALTER NANCE BY CRON, FILED NOVEMBER 16, 1990.
- C.S. 93046, SURVEY FOR GEORGE AND RUTH AKIYAMA BY KLEIN, FILED JULY 9, 1993.
- C.S. 94054, SURVEY FOR RICK KINOSHITA BY CRON, FILED MAY 19, 1994.
- C.S. 2012055, BOUNDARY LINE SURVEY FOR HOOD RIVER COUNTY FORESTRY DEPARTMENT BY TERRA, FILED DECEMBER 20, 2012.
- C.S. 2016007, SURVEY FOR KINOSHITA BY DOWD, L.S.2393, FILED JANUARY 27, 2016.
- C.S. 2016065, SURVEY FOR SEMMES AND LOHL BY KLEIN, L.S.59002, FILED OCTOBER 6, 2016.

TERRA SURVEYING

REGISTERED
 PROFESSIONAL
 LAND SURVEYOR

Erik M. Carlson
 OREGON
 December 30, 2005
 ERIK M. CARLSON
 72306

Expires: December, 2021

DATE: MAY 20, 2021
 SCALE: 1" = 400'
 PROJECT: 21024
 ASSESSORS MAP: 2N-10E-20
 P.O. BOX 617
 HOOD RIVER, OREGON 97031
 PHONE: (541) 386-4531
 E-Mail: terra@gorge.net
 www.terrandsurveying.com

LINE	BEARING	DISTANCE
L1	S 89°40'49" E	244.20'
L2	S 89°40'49" E	244.20'
L3	S 89°40'49" E	263.66'
L4	S 89°40'49" E	263.67'