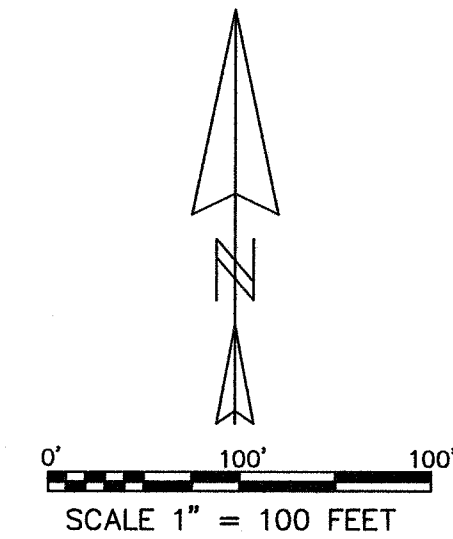


HOOD RIVER COUNTY
SURVEYOR'S OFFICE
SURVEY NO. 2021 022
FILED DATE: 6/22/2021
BY: *AK*

REGISTERED
PROFESSIONAL
LAND SURVEYOR

Kevin Dowd

OREGON
JULY 26, 1989
KEVIN DOWD
2393
RENEW DATE: 12-31-21
JUNE 18, 2021



LINE	BEARING	LENGTH
L1	S28°11'39"E	43.97'
L2	S23°40'15"E	47.09'
L3	S22°33'03"E	61.09'
L4	S17°18'32"E	36.89'
L5	S02°18'18"E	12.54'
L6	S10°15'56"W	17.92'
L7	S39°13'34"W	17.26'
L8	S54°33'41"W	89.93'
L9	S58°38'07"W	50.79'
L10	S56°09'19"W	68.68'
L11	S48°02'26"W	26.87'
L12	S33°51'10"W	35.63'
L13	S20°13'47"W	35.30'
L14	S07°00'08"W	14.66'
L15	S04°03'11"W	36.75'

BASIS OF BEARING IS BEARING BETWEEN MONUMENTS FOUND AT THE NORTHWEST SECTION CORNER AND THE WEST QUARTER CORNER AS DETERMINED BY GPS OBSERVATIONS RECEIVING CORRECTIONS FROM THE ORGN RTN. OCRS NORTH CENTRAL ZONE, NAD 83 (2011) EPOCH 2010.00 CS 88015 CITES THIS BEARING AS N00°03'29"E.

LEGEND

- CENTER LINE OF DITCH ANGLE POINT, NO MONUMENT SET
- CC HOOD RIVER COUNTY PUBLIC LAND CORNER CARD

NARRATIVE

THE PURPOSE OF THIS SURVEY IS TO LOCATE THE EXISTING IRRIGATION DITCH IN CONJUNCTION WITH THE EAST FORK IRRIGATION DISTRICT EASTSIDE LATERAL PIPELINE AND WATER CONSERVATION PROJECT. IN PARTICULAR TO MEMORIALIZE THE EXISTING DITCH LOCATION IN AREAS WHERE ADJOINING PROPERTY BOUNDARIES ARE DEFINED BY THE DITCH OR DITCH RIGHT OF WAY. THE CENTER OF THE DITCH WAS LOCATED BY FIELD SURVEY ALONG WITH TIES TO SECTION SUBDIVISION MONUMENTS. IT IS THE INTENT THAT THE LOCATION OF THE DITCH CAN BE REESTABLISHED IN THE FUTURE BASED ON THE TIES TO THESE MONUMENTS. NO ATTEMPT WAS MADE TO ESTABLISH THE BOUNDARIES OF THE ADJOINING PROPERTIES. THE BOUNDARY LOCATIONS DEPICTED ON THE MAP ARE BASED ON THE REFERENCED RECORDS OF SURVEY.

REFERENCES

- R1) CS 1471, TOPOGRAPHIC SURVEY FOR HOOD RIVER COUNTY, FILED AUGUST 28, 1975
- R2) CS 79087, SURVEY BY DANNY L. CRON LS 1028 FOR MELVIN GREEN, FILED DECEMBER 31, 1979
- R3) CS 86027, SURVEY BY DANNY L. CRON LS 1028 FOR STEVEN SPENGLER, DATED APRIL 22, 1986
- R4) CS 88015, SURVEY BY DANNY L. CRON LS 1028 FOR FELIX D. TOMLINSON, FILED APRIL 15, 1988
- R5) CS 2011005, SURVEY BY ERIK M. CARLSON LS 72306 FOR ANNE MARIE EHRENTAULT, FILED FEBRUARY 15, 2011
- R6) COMMISSIONER'S JOURNAL A PAGE 192, DATED SEPTEMBER 3, 1903
- R7) CORNER CARDS CC 502, CC 503-A AND CC 597

RECORD OF SURVEY

LOCATED IN NORTHEAST QUARTER OF SECTION 30
T2 NORTH, R11 EAST, W.M.
HOOD RIVER COUNTY, OREGON

FOR: EAST FORK IRRIGATION DISTRICT
WATERSHED PROFESSIONALS NETWORK, LLC

WYEAST SURVEYS
KEVIN DOWD
4399 WOODWORTH DR.
MT HOOD-PARKDALE OR, 97041
(541) 352-6065

24
19
25
30
NORTHWEST CORNER
SECTION 30
FOUND IRON PIPE IN MONUMENT CASE
AS PER CC 597

(N00°03'29"E 2655.26' CS 88015)
BASIS OF BEARING
N01°04'31"E 2655.29'

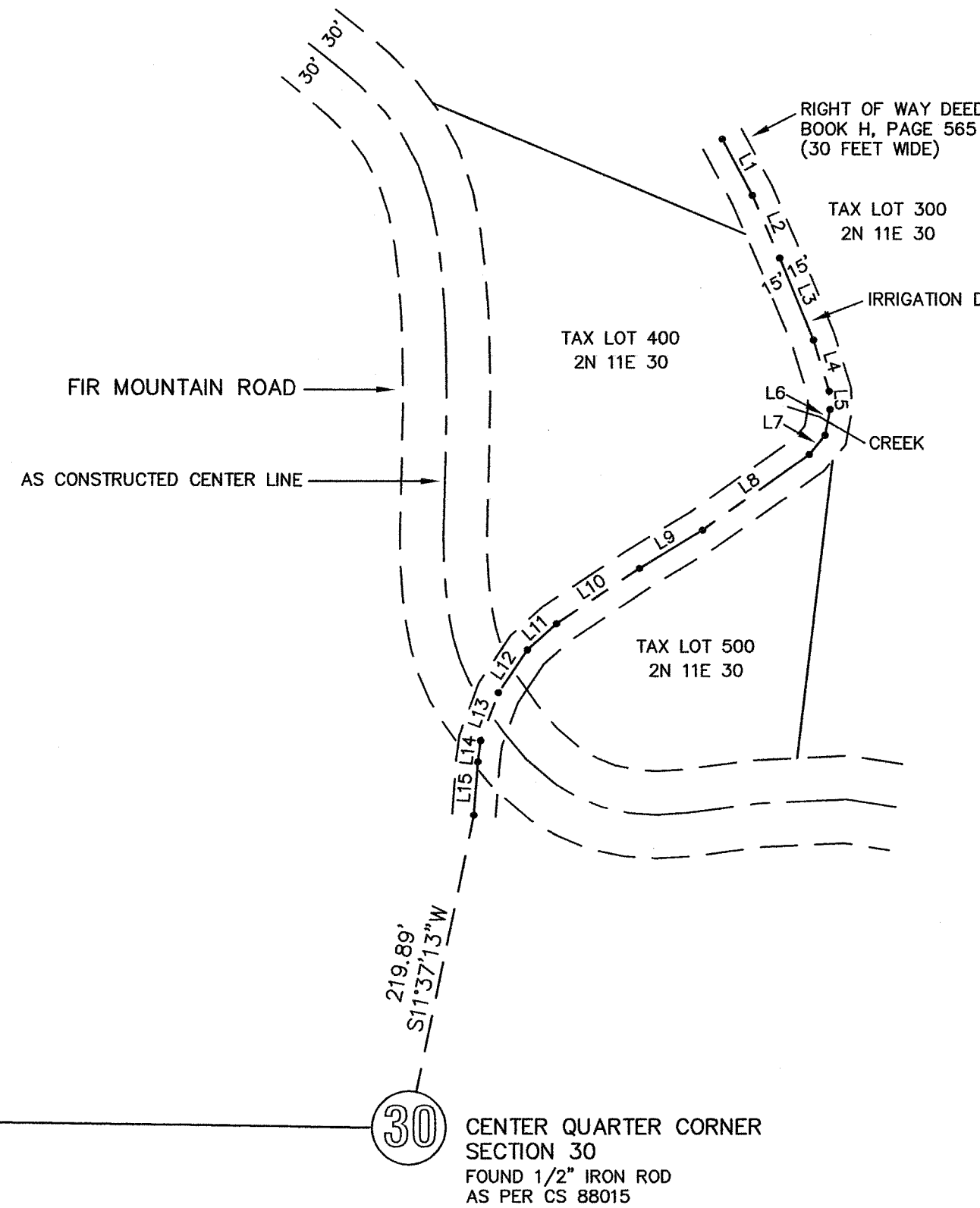
T2N R10E
T2N R11E

WEST QUARTER CORNER
SECTION 30
FOUND IRON PIPE IN MONUMENT CASE
AS PER CC 502

25
30
S89°18'40"E 2712.52'

N00°53'04"E 2640.06'

25
30
36
31
SOUTHWEST CORNER
SECTION 30
FOUND IRON PIPE/BRASS CAP
AS PER CC 503-A



30
CENTER QUARTER CORNER
SECTION 30
FOUND 1/2" IRON ROD
AS PER CS 88015