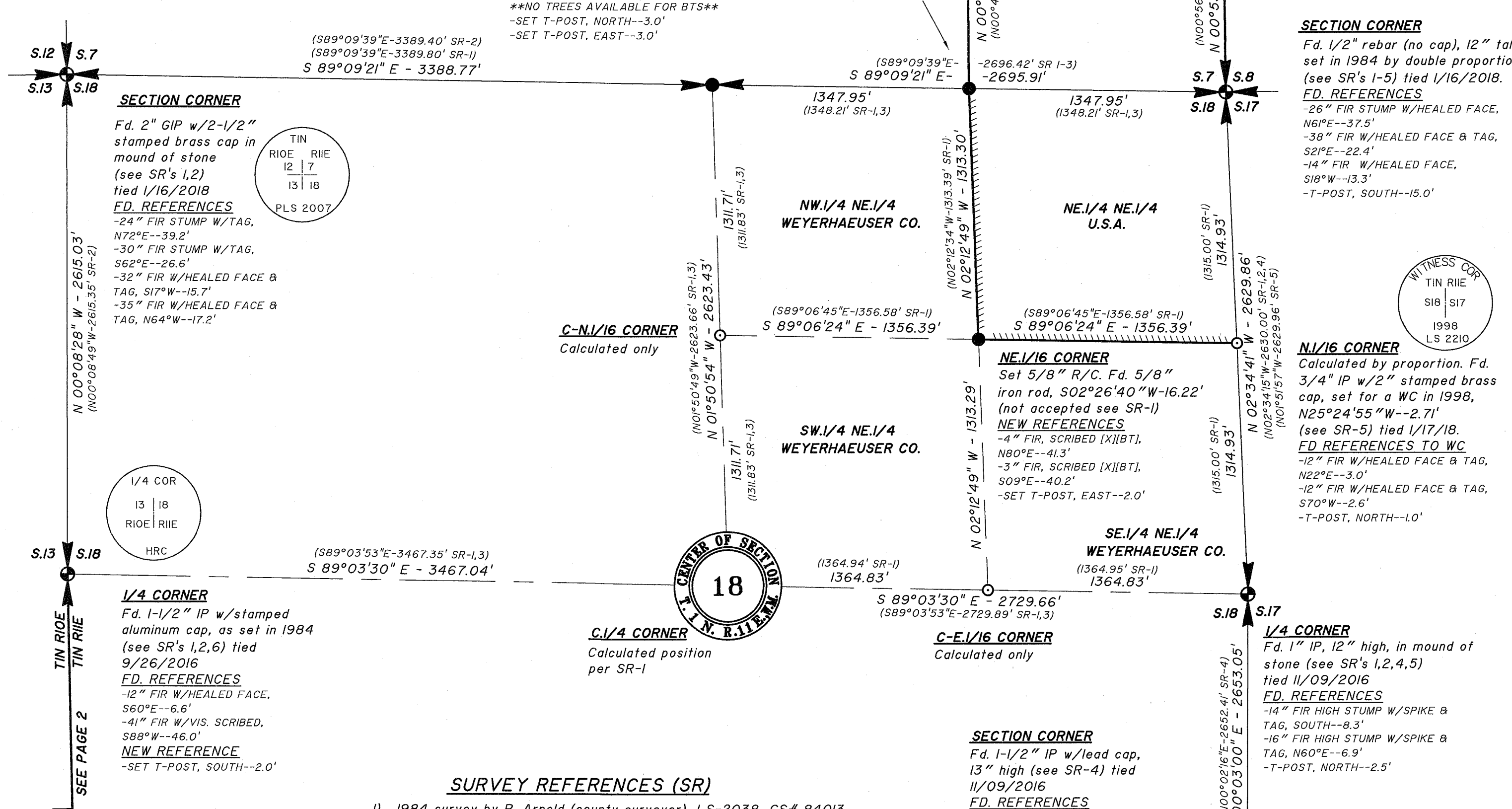


A DEPENDENT RESURVEY of the  
SE.1/4 SE.1/4 of Section 7,  
portions of Section 18 and  
the West line of Section 19, TIN RIEE, W.M.  
 for the Weyerhaeuser Company  
 as situated within  
HOOD RIVER COUNTY, OREGON  
 January 31, 2018

CS# 2020 016  
 FILED 4/13/2020  
 BY BL



**BASIS OF BEARING**  
 Geodetic (true) based on GPS  
 taken at the E.1/4 corner of Sec. 18  
 Lat. 45°34'4.50"N  
 Long. 121°28'56.09"W  
 Convergence = -0°41'47.74"  
 Scale Factor = 0.999919167

SEE SHEET 2  
 FOR NARRATIVE

- LEGEND**
- = A corner FOUND during a this survey, as described.
  - = A new corner SET during this survey, on 1/31/2018, consisting of a 5/8"x30" rebar with yellow plastic survey cap, stamped "HAMPSTUR CORP. LS 2069"
  - = A corner calculated only--not set this survey
  - ( ) = A Bearing and/or Distance of record
  - R/C = A rebar with stamped plastic surveyor's cap
  - WC = A Witness Corner
  - GIP = Galvanized Iron Pipe
  - IP = Iron Pipe
  - SR = Survey Reference No.
  - HRC = Hood River County
  - T-POST = 6" Steel Reference post w/location tag
  - ▬ = A line marked during this survey with 1/2" x 72" white fiberglass rods, painted blazes, and flagging.



SCALE: 1 inch = 500 feet

- SURVEY REFERENCES (SR)**
- 1) 1984 survey by R. Arnold (county surveyor), LS-2038, CS# 84013
  - 2) 1984 survey by D. Nevin, LS-2007, CS# 84010
  - 3) 1993 survey by R. Arnold (county surveyor), LS-2038, CS# 93086
  - 4) 1995 survey by R. Arnold (county surveyor), LS-2038, CS# 95090
  - 5) 1998 survey by G. Ford, LS-2210, CS# 98041
  - 6) 1991 survey by R. Arnold (county surveyor), LS-2038, CS# 91057
  - 7) 1978 survey by D. Cron, LS-1028, CS# 79002
  - 8) 2001 partition survey by R. Gaylord, LS-1815, CS# 2001 043

\*This survey was conducted using a "Leica GPS System" for control and a "Leica TS06+ total station" for traversing, obtaining a relative accuracy of over 1:10,000. All bearings have been rotated to true and distances are ground.

\*Each new corner BT was measured to the center of the tree, referenced by a 60d nail on the right side with a brass flasher stamped "LS 2069" nailed to the scribed face and a reference tag locating the corner.

REGISTERED PROFESSIONAL LAND SURVEYOR  
 Calvin J. Hampton  
 3/13/2020  
 OREGON DECEMBER 2, 1983  
 CALVIN J. HAMPTON 2069  
 EXPIRES: 6/30/2021

**HAMPSTUR CORPORATION**

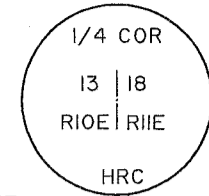
Calculated by : CJH/PRG  
 Checked by : CJH/PRG  
 Drawn by : TLG  
 Completion date : 1/31/2018  
 Field Book no. : PS-773-1,2  
 Drawing No. : 16-637ROS.DWG  
 HAMPSTUR JOB no. : 16-637  
 Sheet no. 1 of 2

P.O. Box 368  
 Kelso, Washington 98626  
 Phone: (360) 423-8166

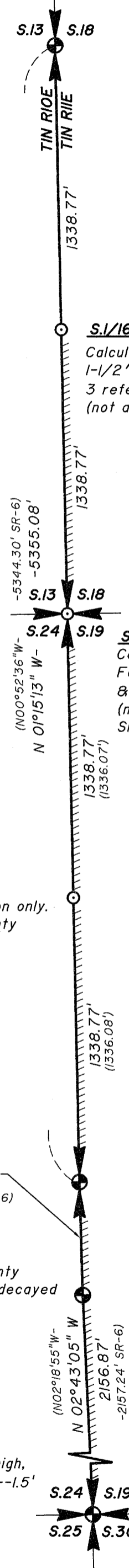
CS# 2020 016

CS# 2020 016  
 FILED 4/16/2020  
 BT BL

A DEPENDENT RESURVEY of the  
SE.1/4 SE.1/4 of Section 7,  
portions of Section 18 and  
the West line of Section 19, TIN RIE, W.M.  
 for the Weyerhaeuser Company  
 as situated within  
HOOD RIVER COUNTY, OREGON  
 January 31, 2018



**1/4 CORNER**  
 Fd. 1-1/2" IP w/stamped aluminum cap, as set in 1984 (see SR's 1,2,6) tied 9/26/2016  
**FD. REFERENCES**  
 -12" FIR W/HEALED FACE, S60°E--6.6'  
 -41" FIR W/VIS. SCRIBED, S88°W--46.0'  
**NEW REFERENCE**  
 -SET T-POST, SOUTH--2.0'



**S.1/16 CORNER**  
 Calculated by proportion only. Fd. 1-1/2" IP w/stamped brass cap & 3 references, S34°53'25"E--13.59' (not accepted)

**SECTION CORNER**  
 Calculated by proportion only. Fd. 1-1/2" IP w/stamped brass cap & 3 references, S60°27'21"E--21.14' (not accepted). Monument set per SR-6 not found.

**N.1/16 CORNER**  
 Calculated by proportion only. Fd. 5/8" R/C by county surveyor (see SR-6), S07°56'31"W--2.69' (not accepted)

**GLO LINE TREE**  
 Fd. 5/8" R/C by county surveyor in center of decayed stump (see SR-6) tied 9/02/2016

**SECTION CORNER**  
 Fd. 1-1/2" IP, 12" high, w/T-POST, N50°W--1.5' (see SR-6) tied 8/24/2016

**SURVEY REFERENCES (SR)**

- 1) 1984 survey by R. Arnold (county surveyor), LS-2038, CS# 84013
- 2) 1984 survey by D. Nevin, LS-2007, CS# 84010
- 3) 1993 survey by R. Arnold (county surveyor), LS-2038, CS# 93086
- 4) 1995 survey by R. Arnold (county surveyor), LS-2038, CS# 95090
- 5) 1998 survey by G. Ford, LS-2210, CS# 98041
- 6) 1991 survey by R. Arnold (county surveyor), LS-2038, CS# 91057
- 7) 1978 survey by D. Cron, LS-1028, CS# 79002
- 8) 2001 partition survey by R. Gaylord, LS-1815, CS# 2001 043

\*This survey was conducted using a "Leica GPS System" for control and a "Leica TSO6+ total station" for traversing, obtaining a relative accuracy of over 1:10,000. All bearings have been rotated to true and distances are ground.

\*Each new corner BT was measured to the center of the tree, referenced by a 60d nail on the right side with a brass flasher stamped "LS 2069" nailed to the scribed face and a reference tag locating the corner.

**NARRATIVE**

The purpose of this survey was to mark various lines within Section 18, the North line of the SE.1/4 SE.1/4 of Section 7 and the West line of Section 19, TIN RIE for timber removal by the Weyerhaeuser Company. The NE. corner of Section 18 has been double proportioned numerous times, mostly by the Hood River County Surveyor at the time. In 1970, a 3/4" pipe was set for the corner as indicated on CS# 85086. In 1978, Danny Cron, LS-1028, proportioned the West line of Section 19 and the West line of the SW.1/4 of Section 18, along with subdividing the SW.1/4 of Section 18 and the NW.1/4 of Section 19, all as shown on CS# 79002. In 1981, Anthony Klein (county surveyor), subdivided the NE.1/4 of Section 18, holding calculated positions for the controlling corners, as shown on CS# 81011. Then in 1984, Dan Nevin, LS-2007, subdivided Section 7, at which time he again double proportioned the NE. corner of Section 18 at which time he set a 1/2" rebar with plastic cap for the same, all as shown on CS# 84010. Also in 1984, Richard Arnold (county surveyor) re-subdivided the NE.1/4 of Section 18 holding the previously set 1/2" rebar at the NE. corner of Section 18, as shown on CS# 84013. Then in 1991, Richard Arnold (county surveyor) re-proportioned the West line of the SW.1/4 of Section 18 and the NW.1/4 of Section 19, as shown on CS# 91057. At that time he reported setting the SW. corner of Section 18 with an iron pipe and brass cap which was not found during this survey. Then in 1993, Mr. Arnold subdivided the SW.1/4 of Section 7, setting the NE. and NW. corners of the SE.1/4 SE.1/4 thereof, as shown on CS# 93086. In 1995, Mr. Arnold surveyed the East and South lines of the NE.1/4 of Section 18, holding the prior corners recorded in CS# 84010, as shown on CS# 95090. Then in 1998, George Ford, LS-2210, surveyed the East line of the NE.1/4 of Section 18, holding the previously set corners, as shown on CS# 98041. Then in 2001, Roy Gaylord performed a partition survey in Section 8, at which time he again double proportioned the NE. corner of Section 18, setting a 5/8" iron rod for the same, as shown on CS# 2001 043. The position of his new double proportion was not accepted during this survey as it would affect numerous prior surveys of record, many of which were done by the county surveyor.

During this survey, we accepted the 1/2" rebar at the NE. corner of Section 18, which has been accepted during numerous surveys. We also accepted the corners found at the NW. corner, the SE. corner, the W.1/4 corner and the E.1/4 corner of Section 18. The C.1/4 corner of Section 18 was calculated from CS# 84013. The NE.1/4 of Section 18 was then subdivided as shown hereon. The NE. and NW. corners of the SE.1/4 SE.1/4 of Section 7 were found and accepted as previously filed under CS# 93086. Also accepted during this survey were the W.1/4 corner of Section 19 the line tree monument set on the West line of the SW.1/4 of Section 19 during CS# 91057 and the SW. corner of Section 19. The range line between W.1/4 corners of Section 18 and 19 was determined by single proportion.

**BASIS OF BEARING**  
 Geodetic (true) based on GPS taken at the E.1/4 corner of Sec. 18  
 Lat. 45°34'4.50"N  
 Long. 121°28'56.09"W  
 Convergence = -0°41'47.74"  
 Scale Factor = 0.99999167

- LEGEND**
- = A corner FOUND during a this survey, as described.
  - = A new corner SET during this survey, on 1/31/2018, consisting of a 5/8"x30" rebar with yellow plastic survey cap, stamped "HAMPSTUR CORP. LS 2069"
  - = A corner calculated only--not set this survey
  - ( ) = A Bearing and/or Distance of record
  - R/C = A rebar with stamped plastic surveyor's cap
  - WC = A Witness Corner
  - GIP = Galvanized Iron Pipe
  - IP = Iron Pipe
  - SR = Survey Reference No.
  - HRC = Hood River County
  - T-POST = 6" Steel Reference post w/location tag
  - ▬▬▬ = A line marked during this survey with 1/2" x 72" white fiberglass rods, painted blazes, and flagging.



SCALE: 1 inch = 500 feet

REGISTERED PROFESSIONAL LAND SURVEYOR  
 Calvin J. Hampton  
 3/13/2020  
 OREGON DECEMBER 2, 1983  
 CALVIN J. HAMPTON 2069  
 EXPIRES: 6/30/2021

**HAMPSTUR CORPORATION**

Calculated by : CJH/PRG  
 Checked by : CJH/PRG  
 Drawn by : TLG  
 Completion date : 1/31/2018  
 Field Book no. : PS-773-1,2  
 Drawing No. : 16-637ROS.DWG  
 HAMPSTUR JOB no. : 16-637  
 Sheet no. 2 of 2