

LEGEND:

- INDICATES MONUMENT FOUND AS NOTED
- () INDICATES RECORD INFORMATION PER SURVEY REFERENCE NUMBER
- INDICATES LINE MARKED WITH 1/2" x 60" FIBER GLASS RODS WITH BLUE RIBBON. TREES ALONG LINE BLAZED AND PAINTED WITH ORANGE PAINT.
- CS COUNTY SURVEY
- OBT ORIGINAL BEARING TREE

NARRATIVE

THE PURPOSE OF THIS SURVEY WAS TO POST THE SOUTH LINES OF SECTION 3 AND 4 FOR THE "WEYERHAEUSER COMPANY TRACT" CITED. FIELD WORK CONSISTED OF ESTABLISHING GPS CONTROL POINTS NEAR CONTROLLING CORNERS WITH EXCEPTION OF THE SOUTHEAST CORNER OF SECTION 3, THE SOUTHWEST CORNER OF SECTION 3 AND THE SOUTH QUARTER CORNER OF SECTION 4 WHICH WERE COLLECTED DIRECTLY. GPS POINTS WERE COLLECTED ON "OREGON STATE PLANE COORDINATE SYSTEM, NORTH ZONE" (NAD 83/2011) WHICH IS THE BASIS OF BEARING FOR THIS SURVEY. A SERIES OF TRAVERSES WERE THEN RAN FROM AND CLOSED ON SAID GPS POINTS TO TIE CONTROLLING CORNERS AND POST SAID LINES. NO NEW MONUMENTS WERE SET DURING THIS SURVEY. DISTANCES SHOWN ARE GROUND. REFER TO THE CORNER NOTES ON THE FACE OF THIS SURVEY FOR MONUMENTS HELD TO CONTROL THE BOUNDARY OF THIS SURVEY.

REFERENCE TREE NOTE

NEW REFERENCE TREES WERE MEASURED TO A 6" NAIL SET IN SIDE CENTER OF TREE. ALSO PLACED A BEARING TREE SIGN AND 4 NOTCHES FACING TOWARD THE CORNER. BEARINGS NOTED WERE TAKEN WITH A HAND COMPASS WITH A DECLINATION SET TO 16' EAST.

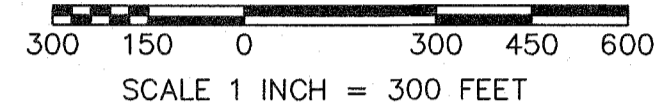
SURVEY REFERENCE

- 1) GENERAL LAND OFFICE, DATE OF ACCEPTANCE (4-07-1941)
- 2) CS 2015-043 - CHRISTOPHER BUTLER FOR WEYERHAEUSER (10-28-2015)

DEED REFERENCE

STATUTORY BARGAIN AND SALE DEED LONGVIEW FIBRE COMPANY TO LONGVIEW TIMBERLANDS, LLC INSTRUMENT NO. 2007-04103 (9/10/2007)

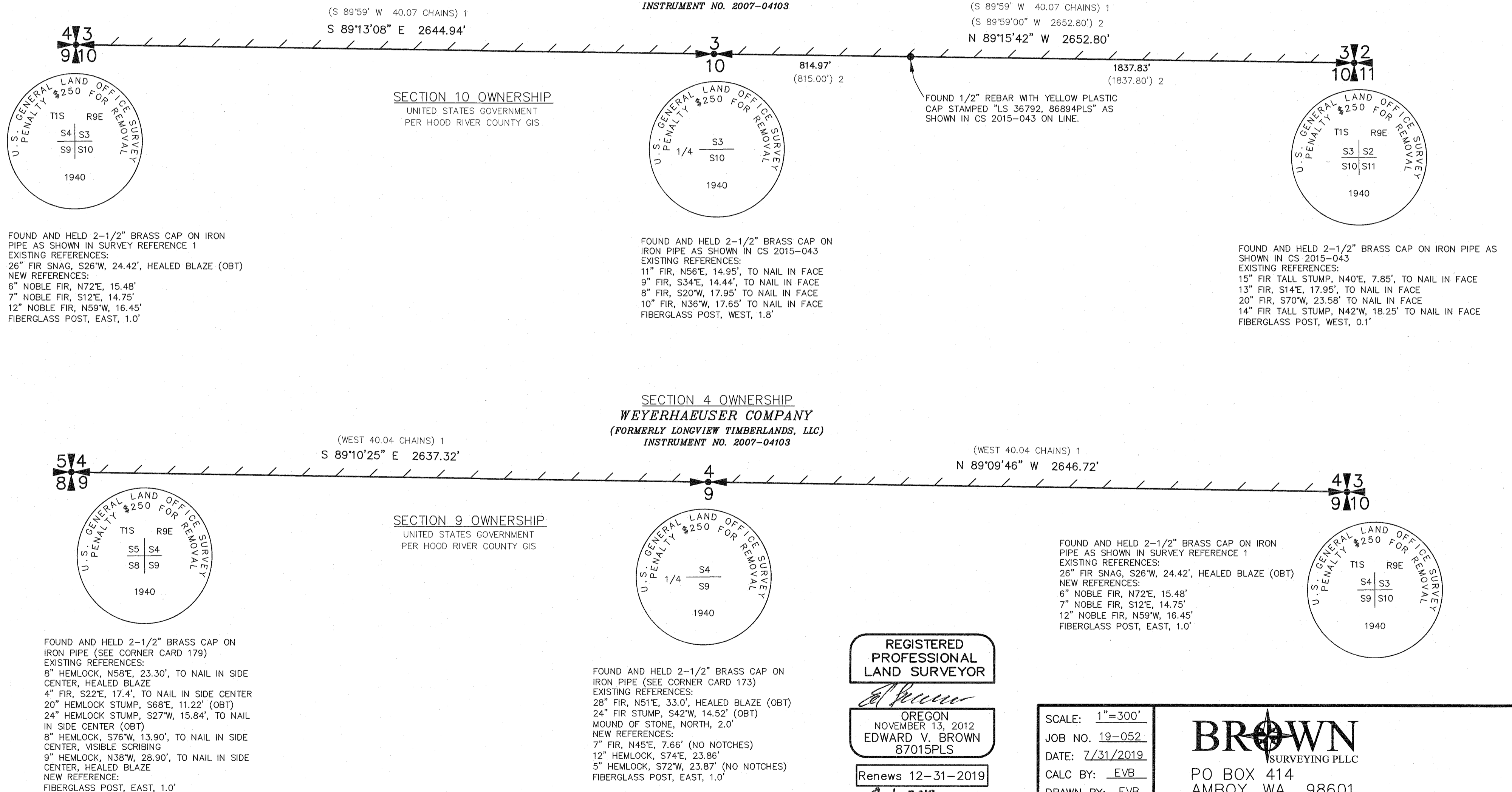
SECTION 3 OWNERSHIP
WEYERHAEUSER COMPANY
(FORMERLY LONGVIEW TIMBERLANDS, LLC)
INSTRUMENT NO. 2007-04103



BEARINGS ARE
NAD 83/2011
BASED ON GPS OBSERVATIONS
(SEE NARRATIVE)

HOOD RIVER COUNTY SURVEYOR
CS NUMBER: 2019039
DATE FILED: 8/15/2019
BY: EL

RECORD OF SURVEY
IN THE SE 1/4 AND SW 1/4 OF
SECTION 3 AND THE SE 1/4 AND
SW 1/4 OF SECTION 4,
T1S, R9E, W.M.
HOOD RIVER COUNTY, OREGON



REGISTERED
PROFESSIONAL
LAND SURVEYOR

Edward V. Brown
OREGON
NOVEMBER 13, 2012
EDWARD V. BROWN
87015PLS

Renews 12-31-2019
8-1-2019

SCALE: 1"=300'
JOB NO. 19-052
DATE: 7/31/2019
CALC BY: EVB
DRAWN BY: EVB
CHECKED BY: GAB
SHEET 1 OF 1

BROWN
SURVEYING PLLC

PO BOX 414
AMBOY, WA 98601
360-600-0846
ebrownsurveying@gmail.com

CS# 2019 039