

NARRATIVE

THE PURPOSE OF THIS SURVEY WAS TO POST THOSE LINES SHOWN AS BEING MARKED FOR THE "LONGVIEW TIMBERLANDS, LLC TRACT" CITED FOR LOGGING PURPOSES AT THE REQUEST OF WEYERHAEUSER COMPANY. FIELD WORK CONSISTED OF RUNNING A RANDOM CONTROL TRAVERSE FROM THE CENTER EAST SIXTEENTH CORNER TO THE NORTHWEST CORNER OF SECTION 21. THIS TRAVERSE WAS THEN ROTATED TO THE RECORD BEARING OF N45°45'45"E WHICH WAS CALCULATED FROM CS 1980051. A SECOND RANDOM TRAVERSE WAS THEN RAN FROM THE FIRST MENTIONED TRAVERSE ALONG THOSE LINES SHOWN AS MARKED AND CLOSED ON THE NORTH SIXTEENTH CORNER ON THE EAST LINE OF SECTION 21. OTHER MONUMENTS SHOWN WERE TIED FROM THE SECOND MENTIONED TRAVERSE. NO NEW MONUMENTS WERE SET DURING THIS SURVEY. MONUMENTS SHOWN IN CS 1980051 WERE FOUND AND HELD FOR THE PURPOSE OF THIS SURVEY, SEE CORNER NOTES ON THE FACE OF THIS PLAT FOR DETAILED NOTES.

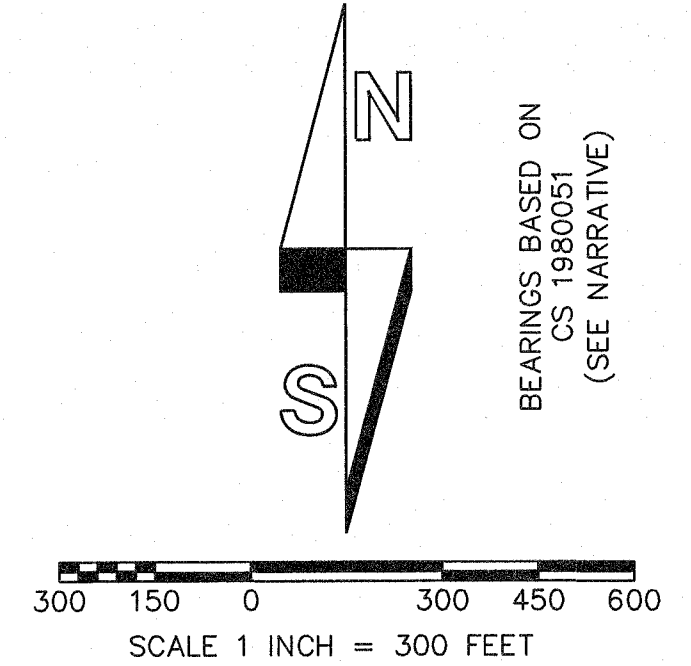
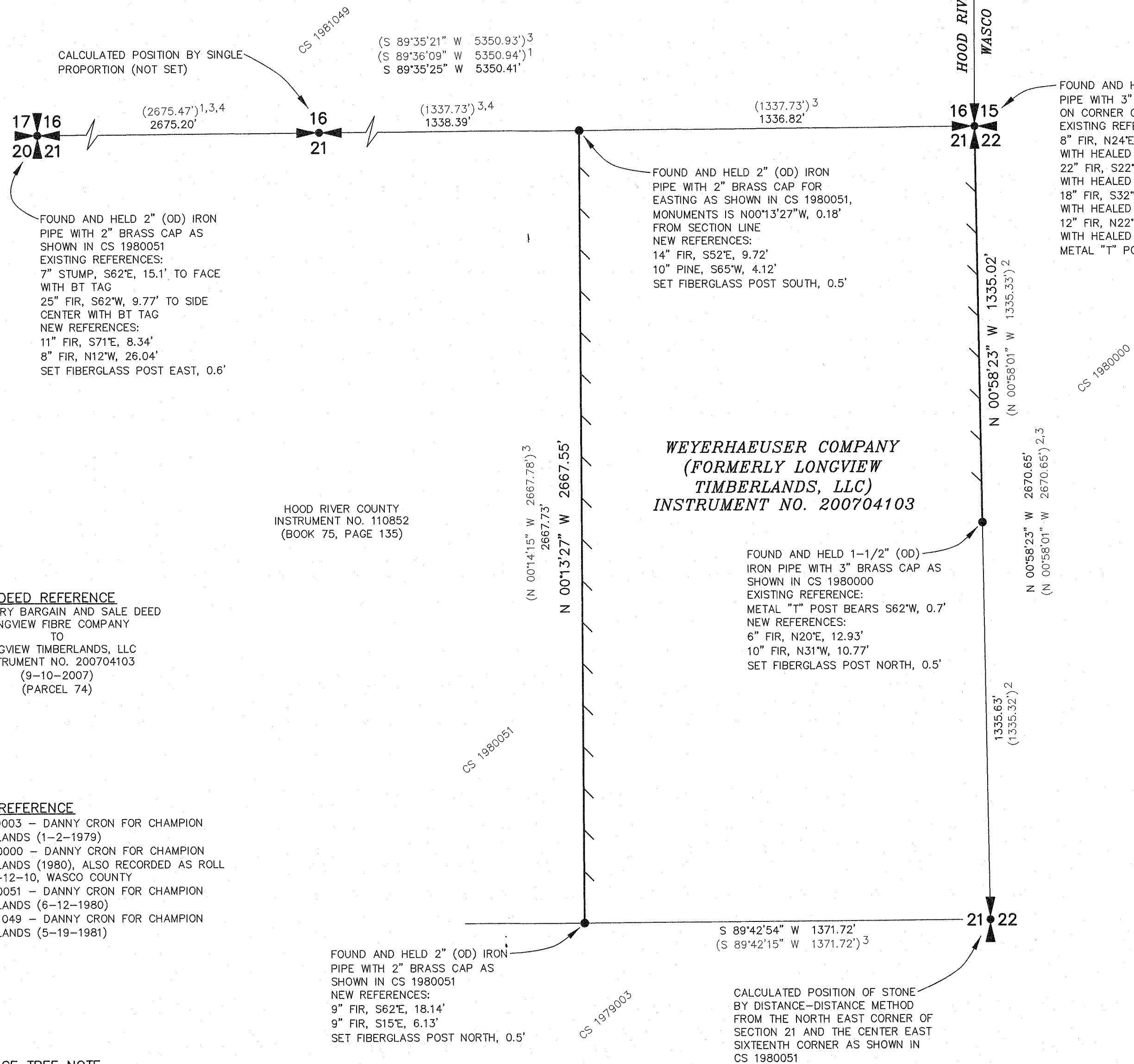
HOOD RIVER COUNTY SURVEYOR

CS NUMBER: 2018-054

DATE FILED: 10/25/2018

BY: EA

RECORD OF SURVEY
IN THE NE 1/4 OF
SECTION 21, T1N, R11E, W.M.
HOOD RIVER COUNTY, OREGON



LEGEND:

- INDICATES MONUMENT FOUND (UNLESS NOTED OTHERWISE)
- () INDICATES RECORD INFORMATION PER SURVEY REFERENCE NUMBER
- / — INDICATES LINE MARKED WITH 1/2" x 60" FIBER GLASS RODS WITH BLUE RIBBON. TREES ALONG LINE BLAZED AND PAINTED WITH ORANGE PAINT.
- CS COUNTY SURVEY
- OD OUTSIDE DIAMETER
- BT BEARING TREE

DEED REFERENCE

STATUTORY BARGAIN AND SALE DEED
LONGVIEW FIBRE COMPANY
TO
LONGVIEW TIMBERLANDS, LLC
INSTRUMENT NO. 200704103
(9-10-2007)
(PARCEL 74)

SURVEY REFERENCE

- 1) CS 1979003 - DANNY CRON FOR CHAMPION TIMBERLANDS (1-2-1979)
- 2) CS 1980000 - DANNY CRON FOR CHAMPION TIMBERLANDS (1980), ALSO RECORDED AS ROLL MAP G-12-10, WASCO COUNTY
- 3) CS 1980051 - DANNY CRON FOR CHAMPION TIMBERLANDS (6-12-1980)
- 4) CS 1981049 - DANNY CRON FOR CHAMPION TIMBERLANDS (5-19-1981)

REFERENCE TREE NOTE

NEW REFERENCE TREES WERE MEASURED TO A 6" NAIL SET IN SIDE CENTER OF TREE, ALSO PLACED A BEARING TREE SIGN AND 4 NOTCHES FACING TOWARD THE CORNER. BEARINGS NOTED WERE TAKEN WITH A HAND HELD COMPASS WITH A DECLINATION SET TO 16° EAST.

REGISTERED
PROFESSIONAL
LAND SURVEYOR

Edward V. Brown
OREGON
NOVEMBER 13, 2012
EDWARD V. BROWN
87015PLS

Renews 12-31-2019
10-10-2018

SCALE: 1"=300'
JOB NO. 18-058
DATE: 10-5-2018
CALC BY: EVB
DRAWN BY: GAB
CHECKED BY: EVB
SHEET 1 OF 1

BROWN
SURVEYING PLLC

PO BOX 414
AMBOY, WA 98601
360-600-0846
ebrownsurveying@gmail.com

CS# 2018 054.