

# PROPERTY LINE ADJUSTMENT SURVEY

PARCEL 1 OF PARTITION PLAT 99-24 AND PARCEL 1 OF PARTITION PLAT 2006-19P  
 IN THE S.E. & S.W. QUARTERS OF SECTION 27, TOWNSHIP 3 NORTH, RANGE 10 EAST, W.M.  
 CITY OF HOOD RIVER, HOOD RIVER COUNTY, OREGON

HOOD RIVER COUNTY  
 SURVEYOR'S OFFICE

Survey No: 2018025  
 Filed Date: 5/23/2018  
 By: BC

UNION PACIFIC RAILROAD

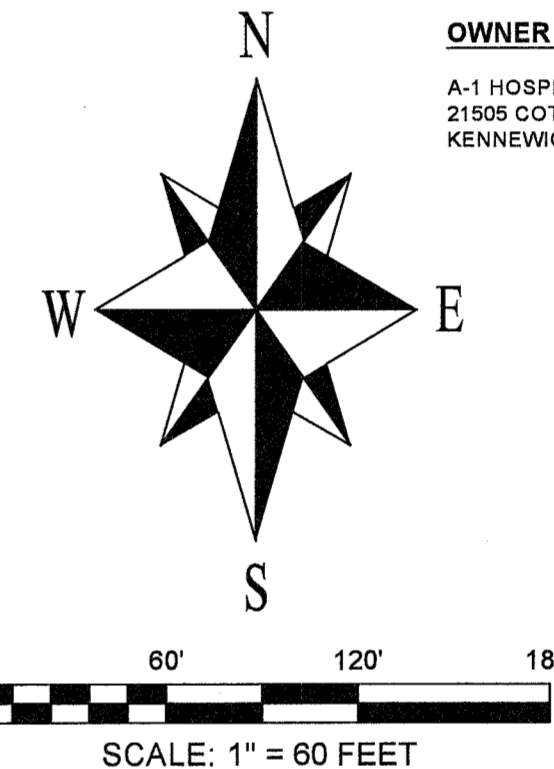
**NARRATIVE:**

THE PURPOSE OF THIS SURVEY IS TO ADJUST THE LINE BETWEEN TAX LOTS 100 AND 101 OF HOOD RIVER COUNTY ASSESSORS MAP 3N-10E-27D. THE ORIGINAL TAX LOT 100 IS PARCEL 1 OF PARTITION PLAT 99-24 AND THE ORIGINAL TAX LOT 101 IS PARCEL 1 OF PARTITION PLAT 2006-19P.

EXISTING MONUMENTS WERE FOUND FROM PARTITION PLATS 99-24 AND 2006-19P AS SHOWN AND THE REMAINING CORNERS NOT FOUND OR SEARCHED FOR WERE CALCULATED AS PER THOSE PLATS. THE MONUMENT SET NEAR THE WEST LINE AT THE NORTHWEST CORNER OF PARCEL 1 OF PARTITION PLAT 99-24 WAS DETERMINED TO BE OFF-LINE BY A RECENT SURVEY TO THE WEST RECORDED AS C.S.#2014003. THE TOP OF THE BLUFF IS A NATURAL MONUMENT FORMING THE WESTERLY PORTION OF THE NORTHERLY LINE OF PARCEL 1 OF PARTITION PLAT 2006-19P. THE SOUTH LINE OF THE RAILROAD RIGHT OF WAY WAS CALCULATED AS PER PARTITION PLAT 2006-19P.

**OWNER & CLIENT:**

A-1 HOSPITALITY HOOD RIVER, LLC  
 21505 COTTONWOOD DRIVE  
 KENNEWICK, WASHINGTON 99338



**BASIS OF BEARINGS:**

N.A.D.83 (2011) (EPOCH 2010) OREGON STATE PLANE, NORTH ZONE, GRID BEARINGS BY G.P.S. OBSERVATIONS. THE RELATIONSHIP BETWEEN THE BEARINGS OF THIS SURVEY AND THE BEARING BETWEEN THE MONUMENTS FOUND FROM C.S.#2006053 ALONG THE EAST LINE OF PARCEL 1 OF PARTITION PLAT 99-24 IS ALSO SHOWN.

**SYMBOL LEGEND**

- SET 5/8" X 30" IRON ROD WITH BLUE PLASTIC CAP INSCRIBED "CROSS P.L.S. 60051" ON MAY 11, 2018.
- ⊗ SET BERNTSEN BP2 1.16" COPPER PLUG WITH PUNCH MARK & MAGNET IN PAVEMENT, INSCRIBED "CROSS P.L.S. 60051", ON MAY 11, 2018.
- ⊙ FOUND P.L.S. 932 5/8" IRON ROD WITH YELLOW PLASTIC CAP FROM PARTITION PLAT 99-24, C.S.#99084.
- FOUND MONUMENT AS NOTED
- CALCULATED CORNER - NOT FOUND OR SET.
- (xx.xx) PARTITION PLAT 2006-19P DISTANCE OR DISTANCE FROM PREVIOUS SURVEY AS SHOWN.

REGISTERED  
 PROFESSIONAL  
 LAND SURVEYOR

*Bradley J. Cross*  
 OREGON  
 JANUARY 15, 2002  
 BRADLEY J. CROSS  
 60051

RENEWS: 12/31/2019

**SURVEY REFERENCES:**

- HOOD RIVER COUNTY SURVEYORS OFFICE:  
 C.S.#78088 - SURVEY BY P.L.S. 1028 FOR PAUL FEDERICI, FILED AUGUST 16, 1978.  
 C.S.#85039 - SURVEY BY P.L.S. 1028 FOR VAGABOND MOTEL, FILED JULY 12, 1985.  
 C.S.#99084 - PARTITION PLAT 99-24 BY P.L.S. 932 FOR COLUMBIA GORGE HOTEL, FILED OCTOBER 27, 1999.  
 C.S.#2006053 - PARTITION PLAT 2006-19P BY P.L.S. 59002 FOR CGH-D,LLC, FILED JUNE 19, 2006.  
 C.S.#2008004 - COLUMBIA CLIFFS VILLAS CONDOMINIUM, STAGE 1, BY P.L.S. 72306 FOR AERIE DEVELOPMENT, LLC, FILED FEBRUARY 11, 2008.  
 C.S.#2008040 - COLUMBIA CLIFFS VILLAS CONDOMINIUM, STAGE 2, BY P.L.S. 72306 FOR AERIE DEVELOPMENT, LLC, FILED MAY 21, 2008.  
 C.S.#2009018 - COLUMBIA CLIFFS VILLAS CONDOMINIUM, STAGE 3, BY P.L.S. 72306 FOR AERIE DEVELOPMENT, LLC, FILED MAY 13, 2009.  
 C.S.#2014003 - PROPERTY LINE ADJUSTMENT SURVEY BY P.L.S.2393 FOR VAGABOND LODGE, FILED FEBRUARY 4, 2014, AS C.S.#2014003.

PROJECT NUMBER: 2018012  
 DATE OF MAP: MAY 13, 2018  
 ASSESSORS MAP: 03N-10E-27D

**COLUMBIA RIVER  
 SURVEYING  
 & MAPPING**

1767 12th STREET, #191  
 HOOD RIVER, OREGON, 97031  
 PHONE: 541-386-9002  
 EMAIL: INFO@COLUMBIASURVEYING.COM

CS# 2018 025

