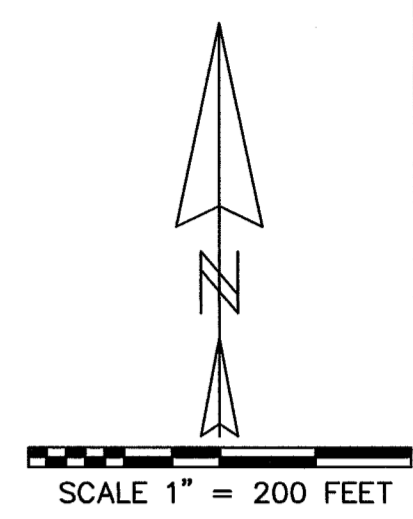
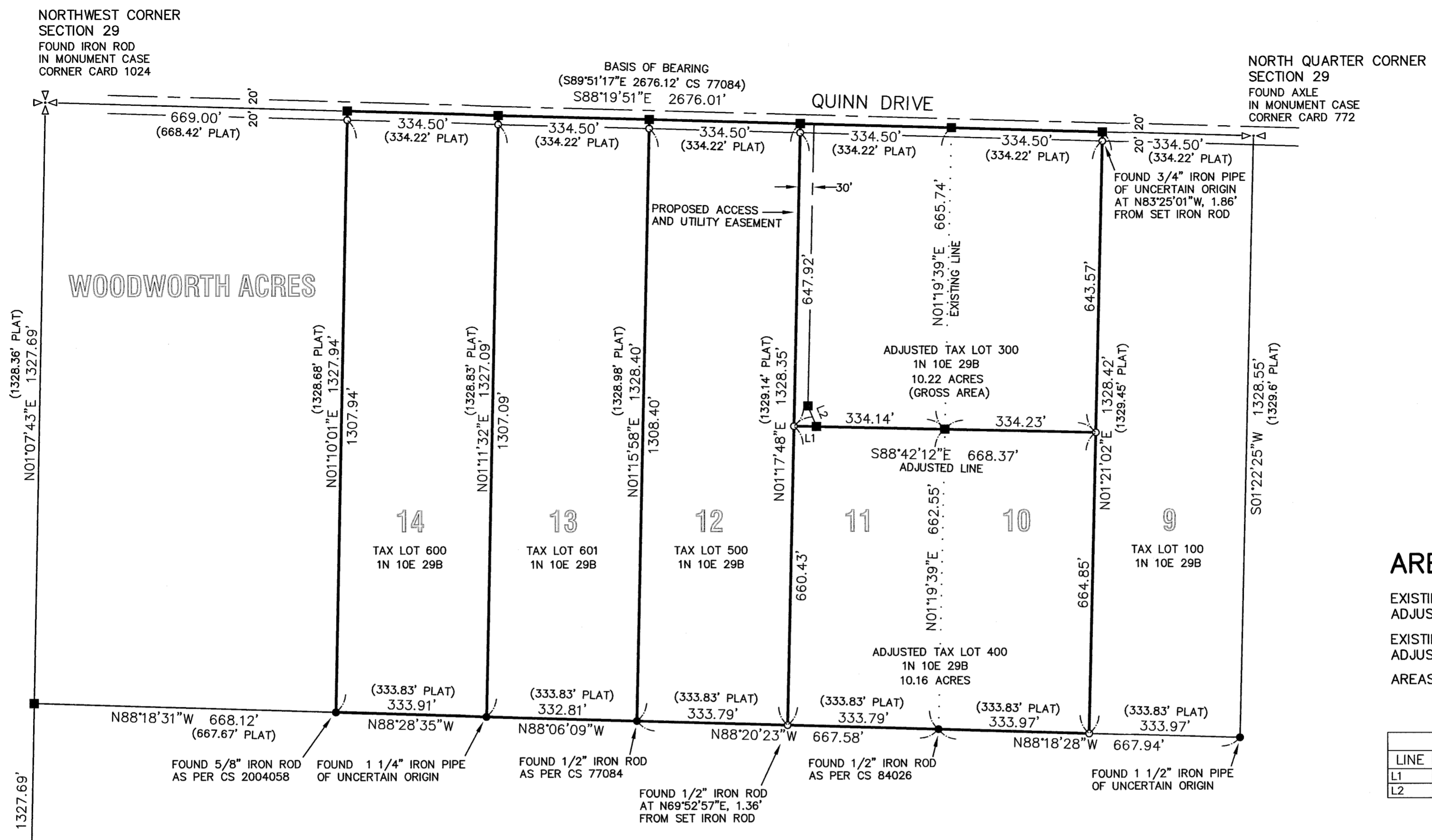


HOOD RIVER COUNTY
SURVEYOR'S OFFICE
SURVEY NO. 2018017
FILED DATE: 4/16/18
BY: MD



REGISTERED
PROFESSIONAL
LAND SURVEYOR
Kevin Dowd
OREGON
JULY 26, 1989
KEVIN DOWD
2393
RENEW DATE: 12-31-19
APRIL 10, 2018



AREA TABLE

EXISTING TAX LOT 300: 10.19 ACRES
ADJUSTED TAX LOT 300 10.22 ACRES
EXISTING TAX LOT 400: 10.19 ACRES
ADJUSTED TAX LOT 400 10.16 ACRES
AREAS INCLUDE QUINN DRIVE RIGHT OF WAY

LINE TABLE		
LINE	BEARING	LENGTH
L1	S88°42'12"E	50.00
L2	N22°39'57"W	49.24

NARRATIVE

THE PURPOSE OF THIS SURVEY IS TO FILE FOR RECORD AND TO MONUMENT THE ADJUSTED LINES OF A PROPERTY LINE ADJUSTMENT BETWEEN LOTS 10 AND 11, WOODWORTH ACRES. ALSO TO ESTABLISH THE BOUNDARIES OF LOTS 12, 13 AND 14, WOODWORTH ACRES. I ESTABLISHED THE CORNERS ALONG THE NORTH LOT LINES BY PRORATION BETWEEN MONUMENTS FOUND AT THE NORTHWEST SECTION CORNER AND NORTH QUARTER CORNER. I FOUND MONUMENTS AT CORNERS ALONG THE SOUTH LOT LINES THAT HAD ALSO BEEN ESTABLISHED BY PRORATION. A REVIEW OF THE PERTINENT RECORDS OF SURVEY FOUND THAT DIFFERENT POSITIONS FOR THE SOUTHEAST CORNER OF LOT 9 HAD BEEN USED FOR THE PRORATION. CS 77084 AND 84026 HAD ACCEPTED A FOUND IRON PIPE FOR THE CORNER. CS 2004058 USED THE CALCULATED 1/16TH CORNER FOR THE POSITION. I ACCEPTED THE MONUMENTS IN THEIR FOUND POSITIONS. THE EXCEPTION TO THIS IS THE IRON ROD FOUND NEAR THE SOUTHWEST CORNER OF LOT 11 WHICH WAS NOT AT THE CS 84026 RECORD POSITION. I ESTABLISHED SAID SOUTHWEST CORNER AND THE SOUTHEAST CORNER OF LOT 10 BY PRORATION BETWEEN THE NEAREST FOUND MONUMENTS TO THE EAST AND WEST. I ACCEPTED THE IRON PIPE FOUND AT THE SOUTHEAST CORNER OF LOT 14. I ESTABLISHED THE ADJUSTED LINE BETWEEN LOTS 10 AND 11 AS PER CLIENT INSTRUCTION. I MONUMENTED THE INTERSECTION OF THE LOT LINES WITH THE SOUTH RIGHT OF WAY LINE OF QUINN DRIVE. I ESTABLISHED SAID SOUTH LINE 20 FEET SOUTH OF THE NORTH LOT LINES AS PER PLAT.

BASIS OF BEARING:
BEARING BETWEEN THE NORTHWEST SECTION CORNER AND THE NORTH QUARTER CORNER
OCS NORTH CENTRAL ZONE, NAD 83 (2011) EPOCH 2010.00
CS 77084 CITES THIS BEARING AS S89°51'17"E AS SHOWN.

**PROPERTY LINE ADJUSTMENT/
RECORD OF SURVEY**

LOTS 10, 11, 12, 13 AND 14, WOODWORTH ACRES
LOCATED IN THE NORTHWEST QUARTER OF SECTION 29
T1 NORTH, R10 EAST, W.M.
HOOD RIVER COUNTY, OREGON

FOR: CLAIR LAND & LIVESTOCK, LLC

WYEAST SURVEYS
KEVIN DOWD
4399 WOODWORTH DRIVE
MT HOOD-PARKDALE OR, 97041
(541) 352-6065

WEST QUARTER CORNER
SECTION 29
FOUND IRON ROD
IN MONUMENT CASE
CORNER CARD 647

LEGEND

- SET 5/8" X 30" IRON ROD WITH YELLOW PLASTIC CAP MARKED "WYEAST LS 2393" ON JANUARY 26, 2018 THROUGH FEBRUARY 1, 2018
- FOUND MONUMENT AS NOTED
- CALCULATED POSITION
- (xxx) RECORD DATA

REFERENCES

- R1) CS 0135, PLAT OF WOODWORTH ACRES BY GEORGE SCOGGIN, RECORDED JULY 3, 1919
- R2) CS 77084, SURVEY BY DANNY L. CRON LS 1028 FOR RICHARD ARTHUR, FILED SEPTEMBER 20, 1977, REVISED JUNE 14, 1989
- R3) CS 84026, SURVEY BY DANNY L. CRON LS 1028 FOR GEORGE COCHRAN, FILED MAY 1, 1984, REVISED MARCH 30, 1986
- R4) CS 2004058, SURVEY BY ROY O. GAYLORD LS 1815 FOR MARCUS AND CATHRYN WHITMAN, FILED SEPTEMBER 21, 2004

CS# 2018 017