

HOOD RIVER COUNTY
 SURVEYOR'S OFFICE
 SURVEY NO. 2018 003
 FILED DATE: 2/2/2018
 BY: KE



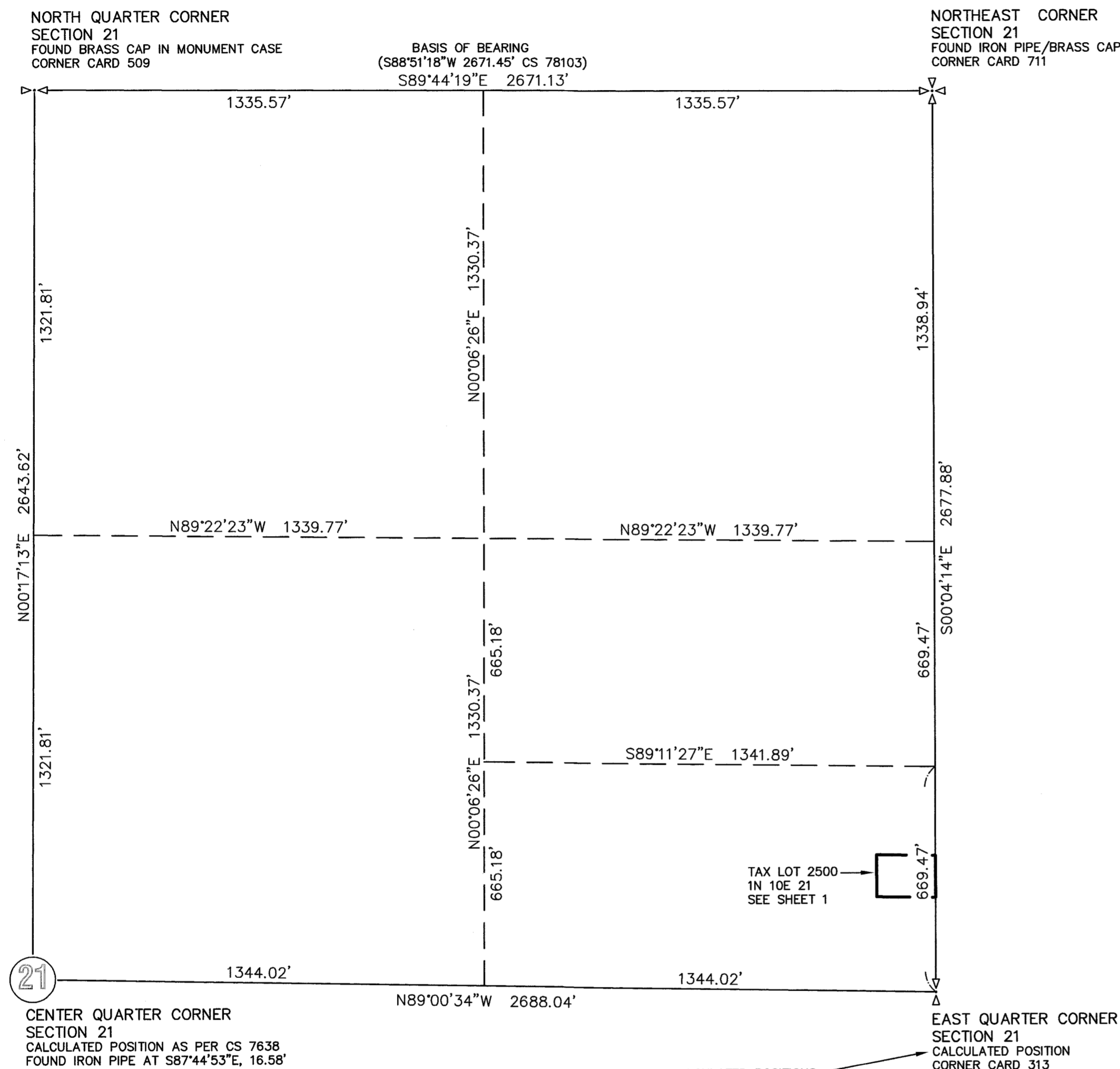
SCALE 1" = 300 FEET

REGISTERED
 PROFESSIONAL
 LAND SURVEYOR

Kevin Dowd

OREGON
 JULY 26, 1989
 KEVIN DOWD
 2393

RENEW DATE: 12-31-19
 JANUARY 10, 2018



BASIS OF BEARINGS:
 BEARING BETWEEN THE NORTH QUARTER CORNER AND THE NORTHEAST SECTION CORNER
 OCRS NORTH CENTRAL ZONE, NAD 83 (2011) EPOCH 2010.00
 CS 78103 CITES THIS BEARING AS S88°51'18\"/>

TAX LOT 2500
 1N 10E 21
 SEE SHEET 1

- I TOOK THE MEAN OF 3 CALCULATED POSITIONS:
- 1) I CALCULATED THE WITNESS IRON PIPE POSITION AS PER CC 313 FROM TIES TO THE RR SPIKE RPS. I HELD CS 7638 ANGLE AND DISTANCE OFF A LINE BETWEEN THE WITNESS IRON PIPE AND THE IRON PIPE FOUND NEAR THE CENTER QUARTER CORNER.
 - 2) I HELD CS 7641 ANGLE AND DISTANCE OFF A LINE BETWEEN THE CENTER QUARTER CORNER SECTION 22 BRASS CAP AND THE SOUTH QUARTER CORNER BRASS CAP.
 - 3) I HELD CS 7641 ANGLE AND DISTANCE OFF A LINE BETWEEN THE CENTER QUARTER CORNER OF SECTION 22 BRASS CAP AND THE NORTH QUARTER CORNER BRASS CAP.

REFERENCES

- R1) CS 7257, SURVEY BY ANTHONY C. KLEIN LS 932 FOR W. B. VAN FLEET, FILED NOVEMBER 16, 1972
- R2) CS 7638, SURVEY BY DANNY L. CRON LS 1028 FOR PHIL JENSEN, FILED SEPTEMBER 8, 1976
- R3) CS 7641, SURVEY BY DANNY L. CRON LS 1028 FOR CLAY SIMON AND DOUG ROBINSON, FILED OCTOBER 13, 1976
- R4) CS 78103, SURVEY BY DANNY L. CRON LS 1028 FOR GLENN TAYLOR, DATED SEPTEMBER 5, 1978
- R5) CS 84045, SURVEY BY ANTHONY C. KLEIN LS 932 FOR BENJ FRANKLIN SAVINGS & LOAN, FILED JUNE 29, 1984
- R6) CS 2000071, SURVEY BY STEVE L. MUMA LS 2747 FOR OREGON DEPARTMENT OF TRANSPORTATION, FILED SEPTEMBER 1, 2000

RECORD OF SURVEY

LOCATED IN THE NORTHEAST QUARTER OF SECTION 21
 T1 NORTH, R10 EAST, W.M.
 HOOD RIVER COUNTY, OREGON

FOR: SOLEIL AMMON

WYEAST SURVEYS
 KEVIN DOWD
 4399 WOODWORTH DRIVE
 MT HOOD-PARKDALE OR 97041
 (541) 352-6065