

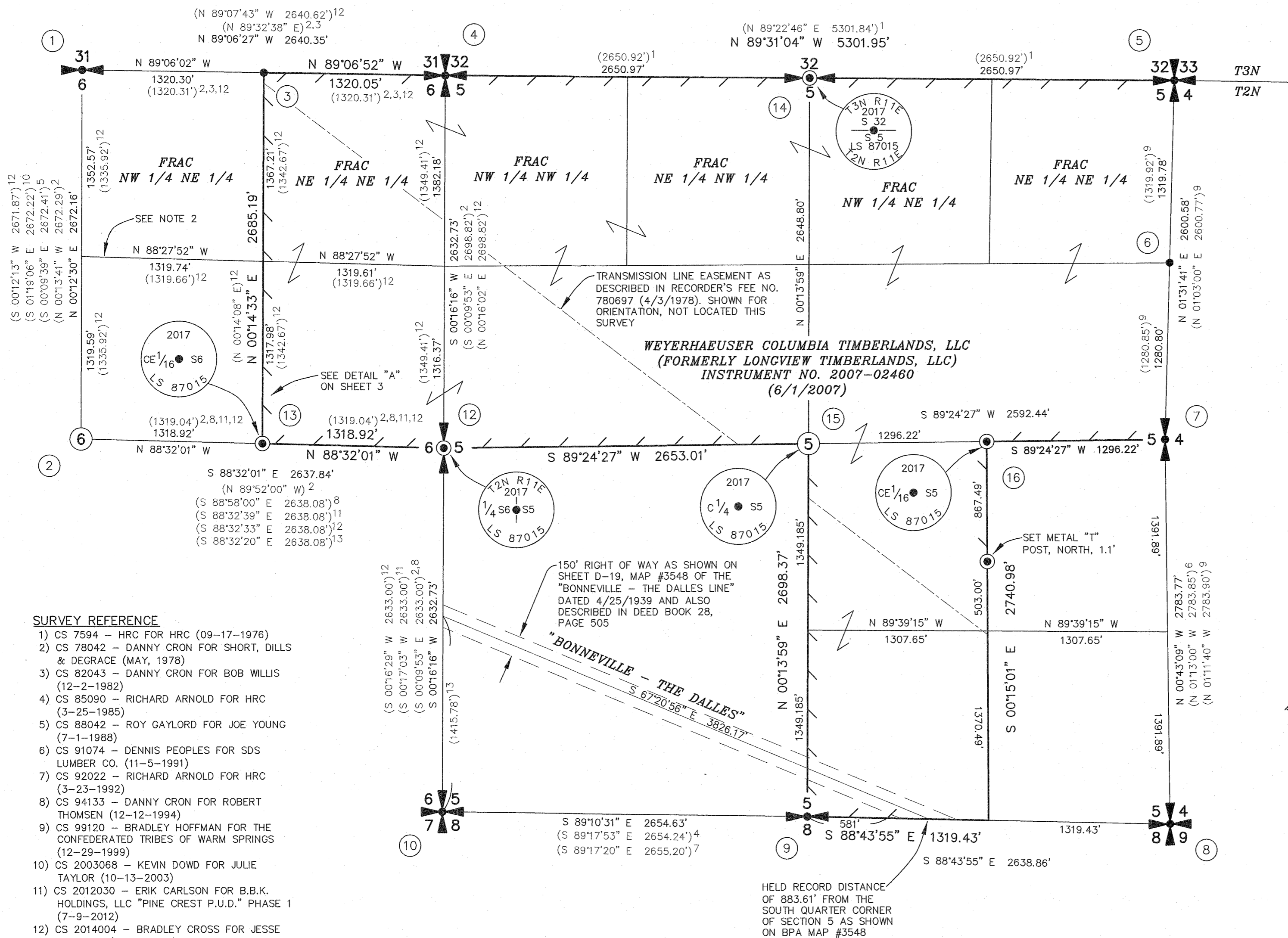
NARRATIVE

THE PURPOSE OF THIS SURVEY WAS TO MONUMENT AND POST THE "WEYERHAEUSER COLUMBIA TIMBERLANDS TRACT" CITED FOR LOGGING PURPOSES AS SHOWN. CONTROLLING CORNERS SHOWN WERE TIED WITH EITHER "RTK GPS PROCEDURES" OR CONVENTIONAL TRAVERSE METHODS ORIGINATING FROM NEARBY "RTK GPS POINTS". THE RESULTING COORDINATES WERE THEN TRANSLATED TO NGS MONUMENT "CITY" AND SCALED TO GROUND DISTANCES BY THE PUBLISHED COMBINED SCALE FACTOR OF 1.000067565. THE GPS POINTS WERE COLLECTED ON "OREGON STATE PLANE COORDINATE SYSTEM, NORTH ZONE" NAD 83 (1991) WHICH WAS THE BASIS OF BEARING FOR THIS SURVEY. OTHER TRAVERSES WERE RAN FROM AND CLOSED ON GPS PAIRS SET THROUGH OUT THE PROJECT SITE NEAR THE POSTED BOUNDARY. OTHER MONUMENTS SHOWN AND NEW MONUMENTS ESTABLISHED WERE TIED AND SET RADIALLY FROM THESE TRAVERSES. POSITIONS SHOWN FOR SET MONUMENTS WERE CALCULATED PER PLSS MANUAL INSTRUCTIONS, SEE PAGES 1 AND 2 FOR FURTHER DETAILS.

DEED REFERENCE
 STATUTORY BARGAIN AND SALE DEED
 LONGVIEW FIBRE COMPANY
 TO
 LONGVIEW TIMBERLANDS, LLC
 INSTRUMENT NO. 2007-02460
 PAGES 14, 15 & 19 OF 21
 (6/1/2007)

HOOD RIVER COUNTY SURVEYOR
 CS NUMBER: 2017049
 DATE FILED: 10/12/2017
 BY: BE

RECORD OF SURVEY
 IN THE NW 1/4 OF SECTION 4,
 THE NE 1/4, NW 1/4 & SE 1/4
 OF SECTION 5 & NE 1/4 OF
 SECTION 6, T2N, R11E, W.M.
 HOOD RIVER COUNTY, OREGON



SURVEY REFERENCE

- 1) CS 7594 - HRC FOR HRC (09-17-1976)
- 2) CS 78042 - DANNY CRON FOR SHORT, DILLS & DEGRACE (MAY, 1978)
- 3) CS 82043 - DANNY CRON FOR BOB WILLIS (12-2-1982)
- 4) CS 85090 - RICHARD ARNOLD FOR HRC (3-25-1985)
- 5) CS 88042 - ROY GAYLORD FOR JOE YOUNG (7-1-1988)
- 6) CS 91074 - DENNIS PEOPLES FOR SDS LUMBER CO. (11-5-1991)
- 7) CS 92022 - RICHARD ARNOLD FOR HRC (3-23-1992)
- 8) CS 94133 - DANNY CRON FOR ROBERT THOMSEN (12-12-1994)
- 9) CS 99120 - BRADLEY HOFFMAN FOR THE CONFEDERATED TRIBES OF WARM SPRINGS (12-29-1999)
- 10) CS 2003068 - KEVIN DOWD FOR JULIE TAYLOR (10-13-2003)
- 11) CS 2012030 - ERIK CARLSON FOR B.B.K. HOLDINGS, LLC "PINE CREST P.U.D." PHASE 1 (7-9-2012)
- 12) CS 2014004 - BRADLEY CROSS FOR JESSE GRONNER (3-18-2014)
- 13) CS 2016062 - ERIK CARLSON FOR B.B.K. HOLDINGS, LLC "PINE CREST P.U.D." PHASE 2 (10-5-2016)

NOTE 2

THE EAST - WEST CENTERLINE OF THE NORTHEAST 1/4 OF SECTION 6 WAS CALCULATED PER THE GENERAL LAND OFFICE PLAT OF TOWNSHIP 2 NORTH, RANGE 11 EAST, W.M., PERFORMED BY L.F. CARTEE UNDER CONTRACT NO. 86 DATED NOVEMBER 16, 1859. SURVEY REFERENCE 12 APPEARS TO HAVE CALCULATED THE NORTHEAST 1/4 OF SECTION 6 BY MIDPOINTS RATHER THAN USING THE PLSS MANUAL OF INSTRUCTIONS.

SHEET INDEX

BOUNDARY OF SECTION 5 & 6SHEET 1
 BOUNDARY OF SECTION 4SHEET 2
 MONUMENT DATASHEET 3



BEARINGS ARE NAD 83 (1991)
 BASED ON GPS OBSERVATIONS
 (SEE NARRATIVE ON THIS PAGE)

SCALE 1 INCH = 600 FEET

LEGEND:

- INDICATES MONUMENT FOUND AS NOTED
- ⊙ INDICATES 5/8" x 36" IRON REBAR WITH YELLOW PLASTIC CAP INSCRIBED "BROWN 87015PLS" SET ON 7-25-2017 (UNLESS NOTED OTHERWISE ON SHEET 3)
- () INDICATES RECORD INFORMATION PER SURVEY REFERENCE NUMBER
- CS COUNTY SURVEY
- FRAC FRACTIONAL
- ⑥ MONUMENT I.D. NUMBER, SEE SHEET 3 FOR DESCRIPTION
- / — INDICATES LINE MARKED WITH 1/2" x 72" FIBER GLASS RODS WITH RED AND WHITE RIBBON. TREES ALONG LINE BLAZED AND PAINTED WITH BLUE PAINT.
- OBT ORIGINAL BEARING TREE
- HRC HOOD RIVER COUNTY

REGISTERED PROFESSIONAL LAND SURVEYOR

EDWARD V. BROWN
 OREGON
 NOVEMBER 13, 2012
 EDWARD V. BROWN
 87015PLS

Renews 12-31-2017

SCALE: 1"=600'
 JOB NO. 17-004
 DATE: 9-30-2017
 CALC BY: GAB
 DRAWN BY: GAB
 CHECKED BY: EVB
 SHEET 1 OF 3

BROWN
 SURVEYING PLLC
 PO BOX 414
 AMBOY, WA 98601
 360-600-0846
 ebrownsurveying@gmail.com

CS# 2017049

| LINE | BEARING | DISTANCE | BEARING | DISTANCE |
|------|---------------|----------|------------|----------|
| L1 | N 01°36'57" W | 735.30' | NORTH | 740.0' |
| L2 | S 00°41'02" W | 475.00' | SOUTH | 475.00' |
| L3 | S 63°12'58" E | 2920.00' | S 63°54' E | 2920.00' |
| L4 | S 63°12'58" E | 632.22' | | |
| L5 | S 63°12'58" E | 1442.56' | | |
| L6 | S 36°07'58" E | 395.00' | S 36°49' E | 395.0' |
| L7 | S 89°18'58" E | 463.90' | EAST | 463.9' |
| L8 | N 33°30'58" W | 965.00' | N 34°12' W | 965.0' |
| L9 | N 62°30'58" W | 3115.00' | N 63°12' W | 3115.00' |
| L10 | S 00°41'54" W | 126.77' | SOUTH | 124.8' |

SURVEY REFERENCE

6) CS 91074 - DENNIS PEOPLES FOR SDS LUMBER CO. (11-5-1991)
 9) CS 99120 - BRADLEY HOFFMAN FOR THE CONFEDERATED TRIBES OF WARM SPRINGS (12-29-1999)

DEED REFERENCE

STATUTORY BARGAIN AND SALE DEED LONGVIEW FIBRE COMPANY TO LONGVIEW TIMBERLANDS, LLC INSTRUMENT NO. 2007-02460 PAGE 19 OF 21 (6/1/2007)

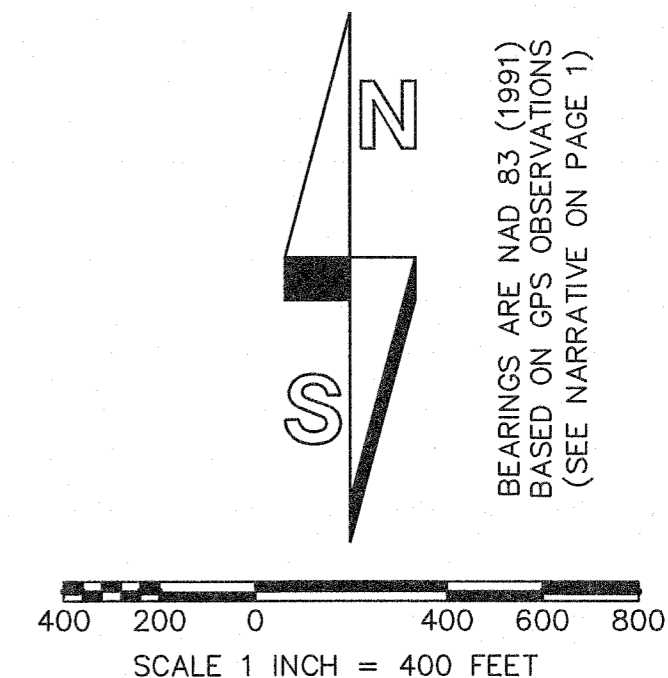
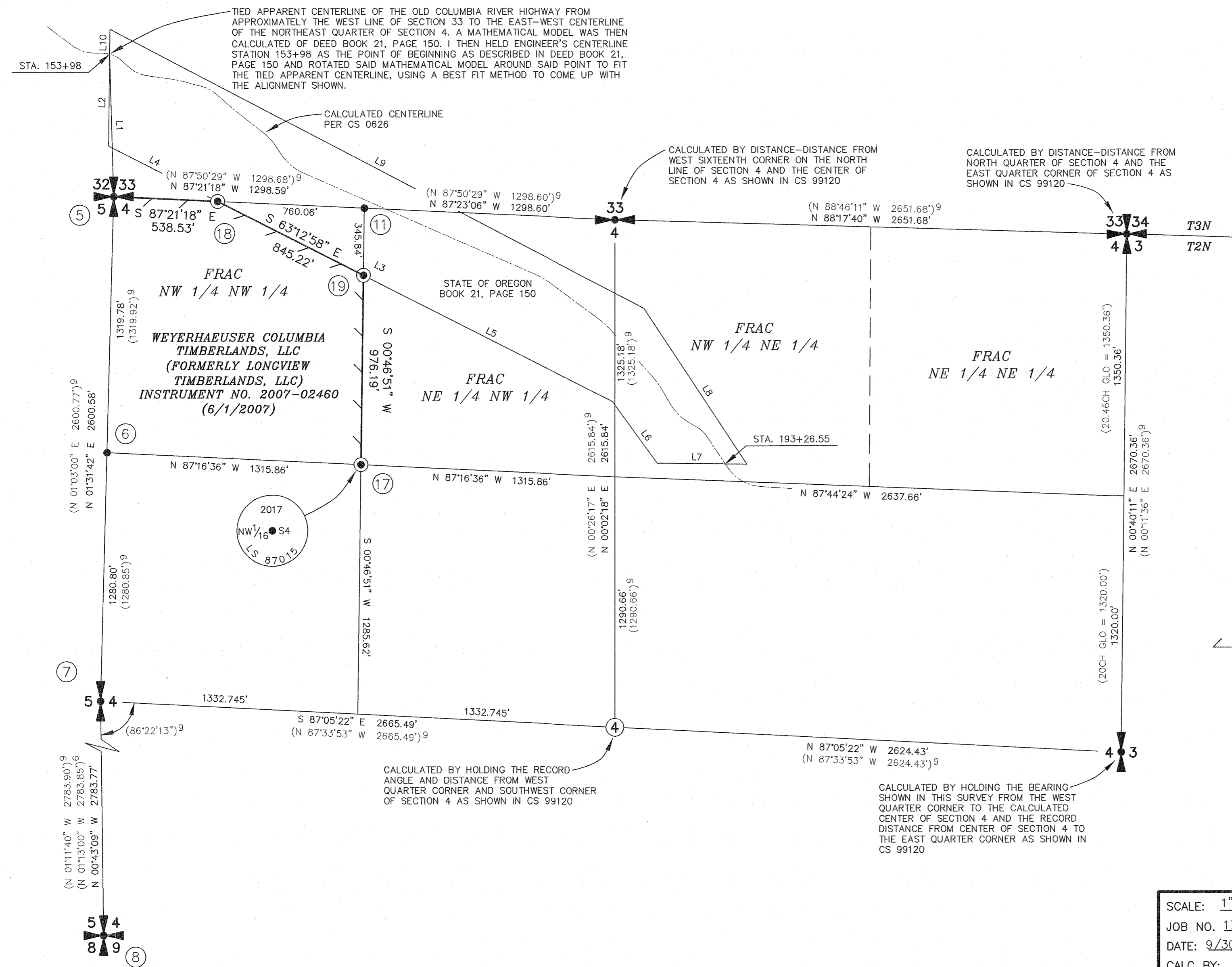
HOOD RIVER COUNTY SURVEYOR

CS NUMBER: 2017049

DATE FILED: 10/12/2017

BY: BLC

RECORD OF SURVEY
 IN THE NW 1/4
 OF SECTION 4, T2N, R11E, W.M.
 HOOD RIVER COUNTY, OREGON



LEGEND:

- INDICATES MONUMENT FOUND (UNLESS NOTED OTHERWISE)
- ⊙ INDICATES 5/8" x 36" IRON REBAR WITH YELLOW PLASTIC CAP INSCRIBED "BROWN 87015PLS" SET ON 7-25-2017 (UNLESS NOTED OTHERWISE ON SHEET 3)
- () INDICATES RECORD INFORMATION PER SURVEY REFERENCE NUMBER
- CS COUNTY SURVEY
- FRAC FRACTIONAL
- ⑥ MONUMENT I.D. NUMBER, SEE SHEET 3 FOR DESCRIPTION
- / — INDICATES LINE MARKED WITH 1/2" x 72" FIBER GLASS RODS WITH RED AND WHITE RIBBON. TREES ALONG LINE BLAZED AND PAINTED WITH BLUE PAINT.
- OBT ORIGINAL BEARING TREE

10-03-2017

REGISTERED PROFESSIONAL LAND SURVEYOR

Ed Brown

OREGON
 NOVEMBER 13, 2012
 EDWARD V. BROWN
 87015PLS

Renews 12-31-2017

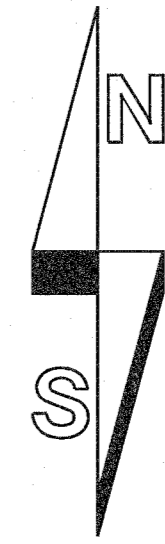
SCALE: 1"=400'
 JOB NO. 17-004
 DATE: 9/30/2017
 CALC BY: GAB
 DRAWN BY: GAB
 CHECKED BY: EVB
 SHEET 2 OF 3

BROWN
 SURVEYING PLLC

PO BOX 414
 AMBOY, WA 98601
 360-600-0846
 ebrownsurveying@gmail.com

HOOD RIVER COUNTY SURVEYOR
 CS NUMBER: 2017049
 DATE FILED: 10/12/2017
 BY: BC

RECORD OF SURVEY
 IN THE NW 1/4 OF SECTION 4,
 THE NE 1/4, NW 1/4 & SE 1/4
 OF SECTION 5 & NE 1/4 OF
 SECTION 6, T2N, R11E, W.M.
 HOOD RIVER COUNTY, OREGON



BEARINGS ARE NAD 83 (1991)
 BASED ON GPS OBSERVATIONS
 (SEE NARRATIVE ON PAGE 1)

600 300 0 600 900 1200
 SCALE 1 INCH = 600 FEET

LEGEND:

- INDICATES MONUMENT FOUND AS NOTED
- ⊙ INDICATES 5/8" x 36" IRON REBAR WITH YELLOW PLASTIC CAP INSCRIBED "BROWN 87015PLS" SET ON 7-25-2017 (UNLESS NOTED OTHERWISE ON SHEET 3)
- () INDICATES RECORD INFORMATION PER SURVEY REFERENCE NUMBER
- CS COUNTY SURVEY
- FRAC FRACTIONAL
- ⑥ MONUMENT I.D. NUMBER, SEE THIS SHEET FOR DESCRIPTION

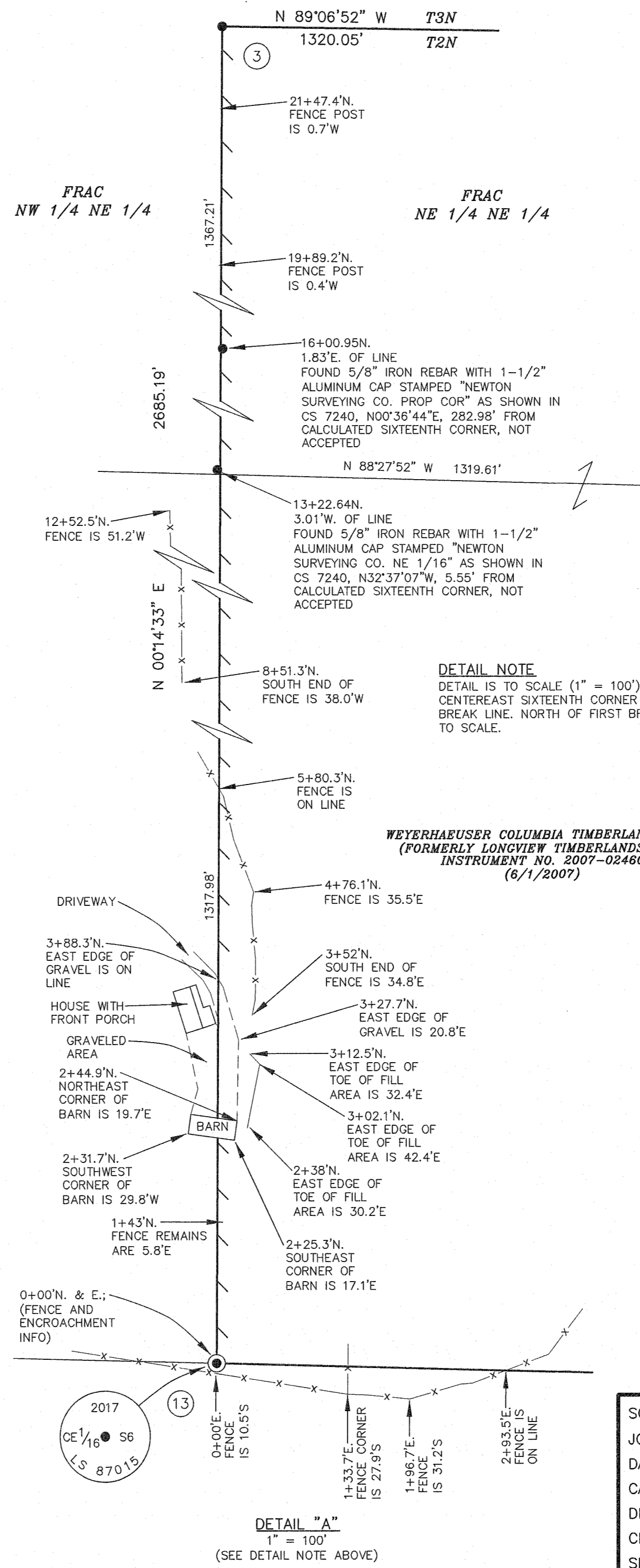
INDICATES LINE MARKED WITH 1/2" x 72" FIBER GLASS RODS WITH RED AND WHITE RIBBON. TREES ALONG LINE BLAZED AND PAINTED WITH BLUE PAINT.

OBT ORIGINAL BEARING TREE

REGISTERED PROFESSIONAL LAND SURVEYOR

OREGON
 NOVEMBER 13, 2012
 EDWARD V. BROWN
 87015PLS

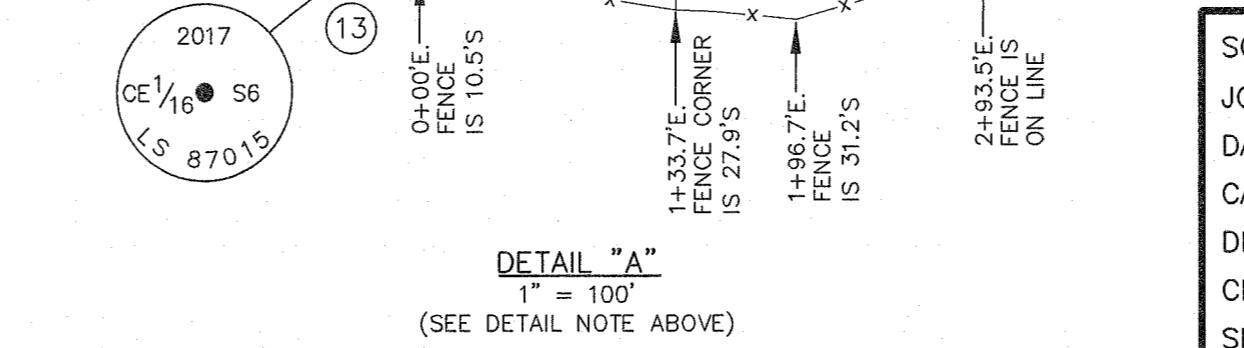
Renews 12-31-2017



- ① FOUND AND HELD HOOD RIVER COUNTY 3" BRASS CAP AS SHOWN IN CS 82043 (SEE CORNER RECORD 603) EXISTING REFERENCES: 18" MAPLE, N41°E, 12' WITH HEALED BLAZE 15" MAPLE, N59°E, 11.4' TO NAIL IN SIDE CENTER 25" FIR, S29°W, 18' WITH HEALED BLAZE 33" FIR, N84°W, 55' WITH HEALED BLAZE
- ② FOUND AND HELD 5/8" IRON REBAR WITH RED PLASTIC CAP STAMPED "TERRA LS 1815" AS SHOWN IN CS 2014004. FOUND 2" IRON PIPE AS SHOWN IN CS 1464, S07°15'39"E, 6.19', NOT ACCEPTED
- ③ FOUND AND HELD 1/2" IRON REBAR WITH NO CAP AS SHOWN IN CS 82043 EXISTING REFERENCES: METAL "T" POST, N56°E, 0.2; NEW REFERENCES: 5" OAK, S82°W, 19.50' SCRIBED "X" "BT" 9" OAK, N09°W, 9.30' WITH 4 NOTCHES
- ④ FOUND AND HELD HOOD RIVER COUNTY 3" BRASS CAP AS SHOWN IN CS 82043 (SEE CORNER RECORD 400) EXISTING REFERENCES: 12" OAK, N45°E, 4.7' WITH HEALED BLAZE 21" FIR, S45°E, 14.3' WITH HEALED BLAZE 9" OAK, S58°W, 14.9' WITH HEALED BLAZE 25" FIR, N22°W, 16.8' WITH HEALED BLAZE SET METAL "T" POST, WEST, 0.9'
- ⑤ FOUND AND HELD HOOD RIVER COUNTY 3" BRASS CAP AS SHOWN IN CS 99120 (SEE CORNER RECORD 332) EXISTING REFERENCES: 32" FIR (OBT), N88°W, 198' WITH HEALED BLAZE 31" FIR SNAG, N22°E, 25.0' WITH HEALED BLAZE 28" FIR, S81°E, 38.6' WITH HEALED BLAZE 15" FIR, S62°E, 32.2' WITH HEALED BLAZE 13" OAK, N63°W, 33.5' WITH HEALED BLAZE SET METAL "T" POST, EAST, 1.6'
- ⑥ FOUND AND HELD 2-1/2" ALUMINUM CAP AS SHOWN IN CS 99120 EXISTING REFERENCES: 18" FIR, S25°E, 25.84' WITH HEALED BLAZE METAL "T" POST, S68°E, 1.0'
- ⑦ FOUND AND HELD 2-1/2" ALUMINUM CAP AS SHOWN IN CS 99120 (SEE CORNER RECORD 348) EXISTING REFERENCES: 6" OAK SNAG, S60°E, 3.55' 20" FIR, S22°W, 34.21' WITH HEALED BLAZE 11" FIR, S66°W, 3.33' WITH HEALED BLAZE NEW REFERENCE: 9" FIR, N54°E, 27.7' WITH 4 NOTCHES SET METAL "T" POST, N46°W, 1.3'
- ⑧ FOUND AND HELD HOOD RIVER COUNTY 3" BRASS CAP AS SHOWN IN CS 99120 (SEE CORNER RECORD 334) EXISTING REFERENCES: 10" OAK, N24°E, 131' WITH HEALED BLAZE METAL "T" POST IN EXISTING NORTH-SOUTH FENCE LINE BEARS S15°W, 5.6' NORTH-SOUTH FENCE LINE IS 2.4' WEST OF MONUMENT NEW REFERENCES: 5/8" IRON REBAR WITH YELLOW PLASTIC CAP STAMPED "BROWN LS 87015", S41°E, 6.50' 5/8" IRON REBAR WITH YELLOW PLASTIC CAP STAMPED "BROWN LS 87015", S44°W, 6.48' 5/8" IRON REBAR WITH YELLOW PLASTIC CAP STAMPED "BROWN LS 87015", N68°W, 5.25'
- ⑨ FOUND AND HELD HOOD RIVER COUNTY 3" BRASS CAP AS SHOWN IN CS 85090 (SEE CORNER RECORD 333) EXISTING REFERENCES: 12" OAK, N12°E, 8.4' WITH DOUBLE HEALED BLAZE 29" PINE, S33°W, 72.0' WITH DOUBLE HEALED BLAZE NEW REFERENCES: 8" OAK, N90°W, 22.2' WITH 4 NOTCHES SET METAL "T" POST, N37°W, 1.3'
- ⑩ FOUND AND HELD HOOD RIVER COUNTY 3" BRASS CAP IN STONE MOUND AS SHOWN IN CS 85090 (SEE CORNER RECORD 331) EXISTING REFERENCES: 22" OAK (OBT), N70°E, 62.4' WITH HEALED BLAZE 13" OAK, N29°E, 65.8' WITH HEALED BLAZE 28" OAK, S71°E, 19.0' 23" PINE, S43°W, 60.0' WITH HEALED BLAZE 34" OAK, S84°W, 28.7' WITH HEALED BLAZE 14" OAK, N59°W, 75.0' WITH HEALED BLAZE 10" OAK, N30°W, 19.2' WITH HEALED BLAZE

- ⑪ FOUND AND HELD 1" IRON PIPE AS SHOWN IN CS 99120 (SEE CORNER RECORD 695) EXISTING REFERENCES: 15" OAK, S85°E, 35.18' WITH HEALED BLAZE NEW REFERENCES: 20" FIR, S06°E, 17.77' WITH 4 NOTCHES
- ⑫ SET 2-1/4" ALUMINUM PIPE WITH 3-1/4" ALUMINUM CAP WITH A 1/2" REBAR INSIDE AT SINGLE PROPORTION POSITION NEW REFERENCES: 10" FIR, N44°E, 10.02' SCRIBED "1/4 S5 BT" 22" FIR, S40°W, 13.08' WITH 4 NOTCHES 6" FIR, N28°W, 9.11' SCRIBED "1/4 S6 BT SET METAL "T" POST, WEST, 1.1'
- ⑬ SET 5/8" IRON REBAR WITH 2" ALUMINUM CAP AT CALCULATED POSITION FOR THE CENTER-EAST SIXTEENTH CORNER. TIED SPINHOLE OF FOUND BENT 1/2" IRON REBAR WITHOUT CAP AS SHOWN IN CS 78042, S87°E, 0.92' FROM CALCULATED POSITION NEW REFERENCES: 15" OAK, S36°E, 23.6' SCRIBED "CE 1/16 S6 BT" 12" FIR, N14°W, 17.15' WITH 4 NOTCHES SET METAL "T" POST, NORTH, 0.7'
- ⑭ SET 2-1/4" ALUMINUM PIPE WITH 3-1/4" ALUMINUM CAP WITH A 1/2" REBAR INSIDE AT SINGLE PROPORTION POSITION NEW REFERENCES: 9" FIR, N18°E, 20.32' SCRIBED "1/4 S32 BT" 22" PINE, S27°W, 24.96' WITH 4 NOTCHES 12" FIR, S69°W, 17.78' SCRIBED "1/4 S5 BT SET METAL "T" POST, WEST, 1.6'
- ⑮ SET 5/8" IRON REBAR WITH 2" ALUMINUM CAP AT CALCULATED POSITION FOR THE CENTER QUARTER CORNER NEW REFERENCES: 7" FIR, S74°E, 7.09' SCRIBED "X" "BT" 7" FIR, S56°W, 3.65' WITH 4 NOTCHES 11" FIR, N20°W, 13.82' SCRIBED "C1/4 S5 BT" SET METAL "T" POST, S70°E, 1.2'
- ⑯ SET 5/8" IRON REBAR WITH 2" ALUMINUM CAP AT CALCULATED POSITION FOR THE CENTER-EAST SIXTEENTH CORNER NEW REFERENCES: 4" FIR, S43°E, 10.33' WITH 4 NOTCHES 6" FIR, N60°E, 2.15' SCRIBED "CE 1/16 S5 BT" SET METAL "T" POST, N10°W, 0.7'
- ⑰ SET 5/8" IRON REBAR WITH 2" ALUMINUM CAP AT CALCULATED POSITION FOR THE NORTH-WEST SIXTEENTH CORNER NEW REFERENCES: 13" FIR, S71°E, 9.25' SCRIBED "NW 1/16 S4 BT" 15" FIR, N14°W, 8.54' WITH 4 NOTCHES SET METAL "T" POST, NORTH, 1.4'
- ⑱ SET 5/8" IRON REBAR WITH YELLOW PLASTIC CAP STAMPED "BROWN 87015LS" NEW REFERENCES: SET METAL "T" POST, EAST, 0.6'
- ⑲ SET 5/8" IRON REBAR WITH YELLOW PLASTIC CAP STAMPED "BROWN 87015LS" NEW REFERENCES: SET METAL "T" POST, SOUTH, 0.8'

NOTE 1
 NEW REFERENCE TREES WERE MEASURED TO AN 8" NAIL SET IN SIDE CENTER OF TREE, ALSO PLACED A BEARING TREE SIGN FACING TOWARD CORNER. BEARINGS NOTED WERE TAKEN WITH A HAND COMPASS WITH A DECLINATION SET TO 16° EAST.



SCALE: 1"=600'
 JOB NO. 17-004
 DATE: 9-30-2017
 CALC BY: GAB
 DRAWN BY: GAB
 CHECKED BY: EVB
 SHEET 3 OF 3

BROWN SURVEYING PLLC
 PO BOX 414
 AMBOY, WA 98601
 360-600-0846
 ebrownsurveying@gmail.com

CS# 2017049