

HOOD RIVER COUNTY SURVEYOR
 CS NUMBER: 2017045
 DATE FILED: 9/25/2017
 BY: B.L.

RECORD OF SURVEY
 THE EAST LINE OF GOV'T LOT 6,
 THE WEST LINE OF GOV'T
 LOT 9 & 10 AND THE NORTH, WEST
 AND EAST LINES OF GOV'T LOT 11,
 OF SECTION 7, T1N, R9E, W.M.
 HOOD RIVER COUNTY, OREGON

- ① SET 5/8" IRON ROD WITH YELLOW PLASTIC CAP STAMPED "BROWN PLS 87015" APPROXIMATELY 30' WEST OF ABANDONED LOGGING ROAD (0.4' ABOVE GROUND).
 NEW REFERENCES:
 8" FIR, S34°E, 22.24' WITH 4 NOTCHES
 SET "T" POST, WEST, 1.0'
 FOUND A 1" IRON PIPE (ID) AS SHOWN IN CS 266, S20°19'E, 2.93' FROM SET MONUMENT, NOT ACCEPTED
- ② SET 5/8" IRON ROD WITH YELLOW PLASTIC CAP STAMPED "BROWN PLS 87015" IN A MOUND OF STONES ON THE EDGE OF A SMALL CREEK (FLUSH WITH MOUND OF STONES) CORNER IS APPROXIMATELY 150' WEST OF LOGGING ROAD.
 NEW REFERENCES:
 17" FIR, N85°E, 17.55' WITH 4 NOTCHES
 10" CEDAR, S21°E, 20.50' WITH 4 NOTCHES
 SET "T" POST, N85°E, 0.8'
- ③ SET 5/8" IRON ROD WITH YELLOW PLASTIC CAP STAMPED "BROWN PLS 87015" IN A MOUND OF STONES (FLUSH WITH MOUND OF STONES).
 NEW REFERENCES:
 8" HEMLOCK, S80°E, 7.52' WITH 4 NOTCHES
 12" SILVER FIR, N05°W, 7.87' WITH 4 NOTCHES
 SET "T" POST, S07°W, 1.60'
- ④ SET 5/8" IRON ROD WITH YELLOW PLASTIC CAP STAMPED "BROWN PLS 87015" (0.4' ABOVE GROUND).
 NEW REFERENCES:
 9" FIR, S76°E, 22.60' WITH 4 NOTCHES
 8" FIR, S01°W, 12.62' WITH 4 NOTCHES
 SET "T" POST, N80°W, 1.1'

DEED REFERENCE
 STATUTORY WARRANTY DEED
 LONGVIEW FIBRE COMPANY
 TO
 LONGVIEW TIMBERLANDS, LLC
 INSTRUMENT NO. 2007-02460
 (06/01/2007)

FOUND AND HELD 1" IRON PIPE WITH 2-1/2" BRASS CAP AS SHOWN IN CS 1995105 (1.0' ABOVE GROUND).
 EXISTING REFERENCES:
 13" FIR, N05°E, 5.40' WITH HEALED BLAZE, TAG AND NAIL IN SIDE CENTER
 15" FIR, S85°W, 15.65' WITH HEALED BLAZE, TAG AND NAIL IN SIDE CENTER
 FOUND "T" POST NORTH, 1.0'

FOUND AND HELD 1" IRON PIPE WITH 2-1/2" BRASS CAP IN ROCK MOUND AS SHOWN IN CS 1995105 (FLUSH WITH TOP OF ROCK MOUND).
 EXISTING REFERENCES:
 7" FIR, N08°E, 5.59' WITH HEALED BLAZE, TAG AND NAIL IN SIDE CENTER
 14" FIR, S70°W, 12.69' WITH HEALED BLAZE, TAG AND NAIL IN SIDE CENTER
 FOUND "T" POST NORTH, 1.0'

FOUND AND HELD 2-1/2" IRON PIPE WITH 3-1/4" BRASS CAP AS SHOWN IN CS 2016001, 1.0' ABOVE GROUND.
 (SEE CORNER RECORD 212)
 EXISTING REFERENCES:
 20" HEMLOCK STUMP REMAINS, S40°E, 2.7' (OBT)
 FIR STUMP REMAINS, N40°W, 5.1' (OBT)
 9" FIR, N39°E, 42.60' WITH HEALED BLAZE, TAG AND NAIL IN SIDE CENTER
 24" FIR STUMP, N58°E, 35.5' TO FACE WITH TAG
 12" FIR, S67°E, 20.33' WITH HEALED BLAZE, TAG AND NAIL IN SIDE CENTER
 36" FIR STUMP, S04°E, 68.8' TO 1/2" IRON ROD IN TOP OF STUMP WITH TAG
 24" FIR STUMP, S89°W, 61.9' TO 1/2" IRON ROD IN TOP OF STUMP WITH TAG
 CARSONITE POST BEARS NORTH, 0.5'

FOUND AND HELD 2-1/2" STEEL PIPE WITH 2-1/2" BRASS CAP IN A MOUND OF STONE AS SHOWN IN CS 1980091, 1.0' ABOVE GROUND
 (SEE CORNER RECORD 213)
 EXISTING REFERENCES:
 24" NOBLE FIR SNAG, N55°W, 7.3' WITH VISIBLE SCRIBING (OBT)
 32" NOBLE FIR STUMP, S80°E, 37.8' TO RAILROAD SPIKE IN CENTER
 CARSONITE POST BEARS SOUTH, 4.0'
 NEW REFERENCES:
 6" PINE, N45°E, 21.8' WITH 4 NOTCHES
 38" NOBLE FIR, S71°W, 24.1' WITH 4 NOTCHES

NARRATIVE

THE PURPOSE OF THIS SURVEY WAS TO MONUMENT AND MARK THE BOUNDARIES OF THE "WEYERHAEUSER COLUMBIA TIMBERLANDS, LLC TRACT" CITED FOR LOGGING PURPOSES AS SHOWN. CONTROLLING CORNERS SHOWN WERE TIED WITH EITHER "RTK GPS PROCEDURES" OR CONVENTIONAL TRAVERSE METHODS ORIGINATING FROM NEARBY "RTK GPS POINTS". THE BASIS OF BEARING FOR THIS SURVEY IS BASED ON THE RECORD BEARING OF N64°26'29"W BETWEEN THE SOUTH QUARTER CORNER OF SECTION 7 AND THE WEST QUARTER CORNER OF SECTION 7 AS CALCULATED FROM CS 2016001. A RANDOM CONTROL TRAVERSE WAS RAN FROM GPS POINTS NEAR THE WEST QUARTER CORNER AND CLOSED ON GPS POINTS NEAR THE SOUTHWEST CORNER OF SECTION 7. A SECOND RANDOM TRAVERSE WAS RAN FROM GPS POINTS NEAR THE SOUTH QUARTER CORNER THROUGH THE SOUTHEAST, NORTHEAST AND NORTHWEST CORNERS OF GOVERNMENT LOT 11 AND CLOSED ON GPS POINTS NEAR THE SOUTHWEST CORNER OF GOVERNMENT LOT 11. A THIRD RANDOM TRAVERSE WAS RAN FROM GPS POINTS NEAR THE NORTHEAST CORNER OF GOVERNMENT LOT 6 AND CLOSED ON GPS POINTS NEAR THE SOUTHEAST CORNER OF GOVERNMENT LOT 6. OTHER MONUMENTS SHOWN AND NEW MONUMENTS ESTABLISHED WERE TIED AND SET RADIALLY FROM THE ABOVE DESCRIBED TRAVERSES. POSITIONS SHOWN FOR SET MONUMENTS WERE CALCULATED PER PLSS MANUAL INSTRUCTIONS.

SURVEY REFERENCE

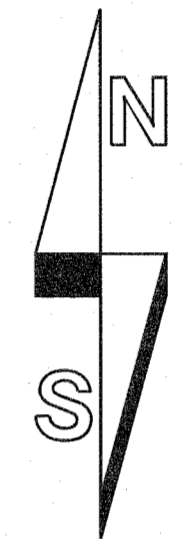
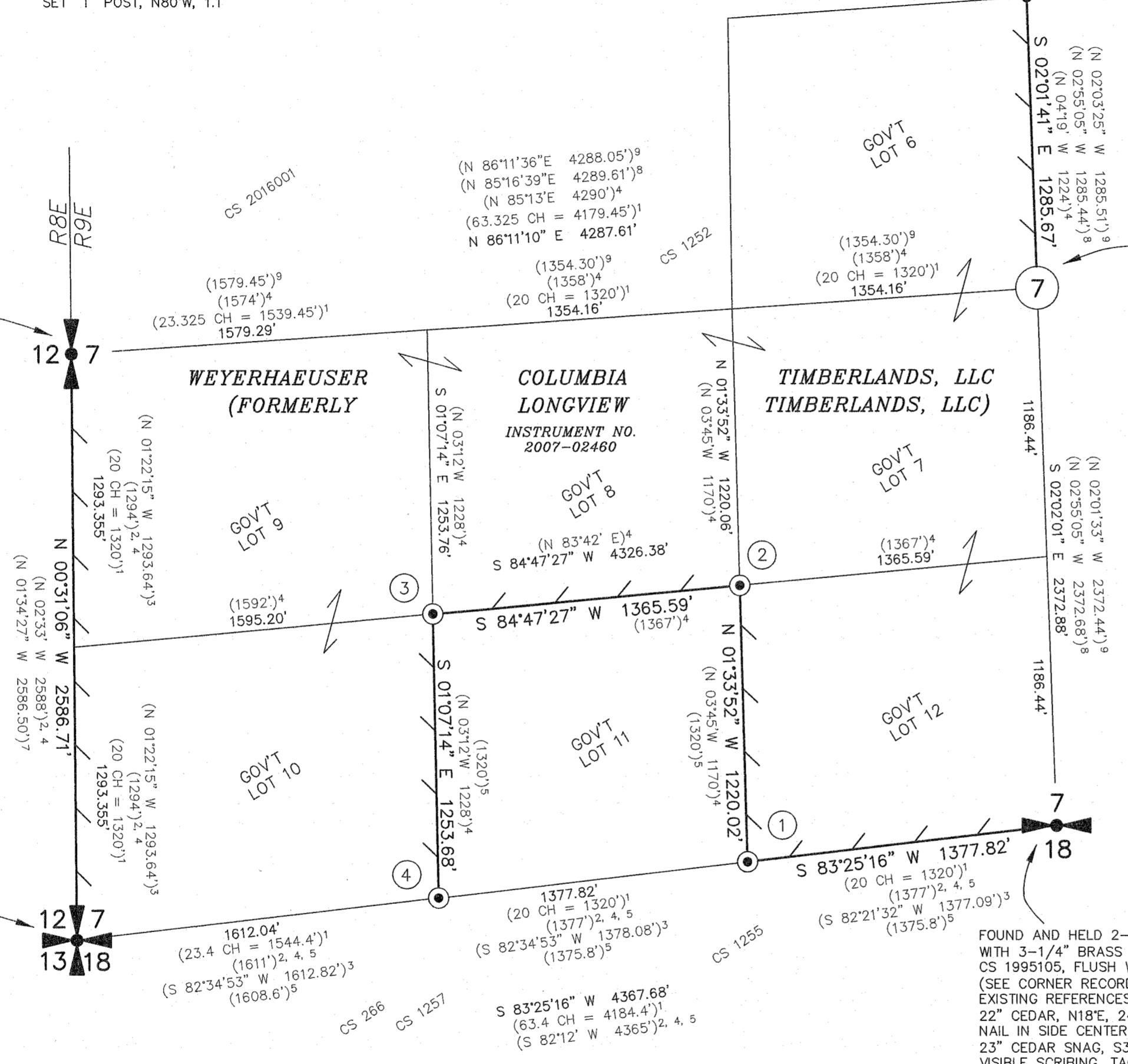
- 1) GLO - NEWTON CLARK (5-13-1884)
- 2) CS 266 - GEORGE FREY FOR HOOD RIVER COUNTY (2-21-1962)
- 3) CS 1242 - (7-1-1970)
- 4) CS 1252 - GEORGE FREY FOR JAYMAR LUMBER CO. (1-9-1970)
- 5) CS 1255 - BERT UDELL FOR JAYMAR LUMBER CO. (12-11-1969)
- 6) CS 1257 - GEORGE FREY FOR JAYMAR LUMBER CO. (1-9-1970)
- 7) CS 1980091 - LARRY BISHOP FOR U.S. FOREST SERVICE (11-5-1980)
- 8) CS 1995105 - ROY GAYLORD FOR LONGVIEW FIBRE CO. (11-7-1995)
- 9) CS 2016001 - CHRIS BUTLER FOR WEYERHAEUSER (1-7-2016)

NOTE 1

NEW REFERENCE TREES WERE MEASURED TO AN 8" NAIL SET IN SIDE CENTER OF TREE, ALSO PLACED A BEARING TREE SIGN FACING TOWARD CORNER. BEARINGS NOTED WERE TAKEN WITH A HAND COMPASS WITH THE DECLINATION SET TO 16° EAST.

NOTE 2

DISTANCES SHOWN ARE GROUND DISTANCES. TO OBTAIN GRID DISTANCES, DIVIDE THE DISTANCES SHOWN BY THE COMBINED SCALE FACTOR OF 1.000255463.



SCALE 1 INCH = 500 FEET

LEGEND:

- INDICATES MONUMENT FOUND AS NOTED
- ⊙ INDICATES 5/8" x 36" IRON REBAR WITH YELLOW PLASTIC CAP INSCRIBED "BROWN 87015PLS" SET ON 11-17-2016
- () INDICATES RECORD INFORMATION PER SURVEY REFERENCE NUMBER
- / — INDICATES LINE MARKED WITH 1/2" x 72" FIBER GLASS RODS WITH RED AND WHITE RIBBON. TREES ALONG LINE BLAZED AND PAINTED WITH BLUE PAINT.
- CS COUNTY SURVEY
- ID INSIDE DIAMETER
- GLO GENERAL LAND OFFICE
- CH CHAINS
- OBT ORIGINAL BEARING TREE
- ① MONUMENT I.D. NUMBER

REGISTERED PROFESSIONAL LAND SURVEYOR

Ed Brown
 OREGON
 NOVEMBER 13, 2012
 EDWARD V. BROWN
 87015PLS

Renews 12-31-2017
 9-20-2017

SCALE: 1"=500'
 JOB NO. 16-033
 DATE: 9-19-2017
 CALC BY: GAB
 DRAWN BY: GAB
 CHECKED BY: EVB
 SHEET 1 OF 1

BROWN SURVEYING PLLC
 PO BOX 414
 AMBOY, WA 98601
 360-600-0846
 ebrownsurveying@gmail.com