

TERRA SURVEYING  
SUBDIVISION PLAT  
OF  
MOUNTAIN VISTAS  
PHASE 3

PAGE 1 OF 3  
LOCATION OF SURVEY:

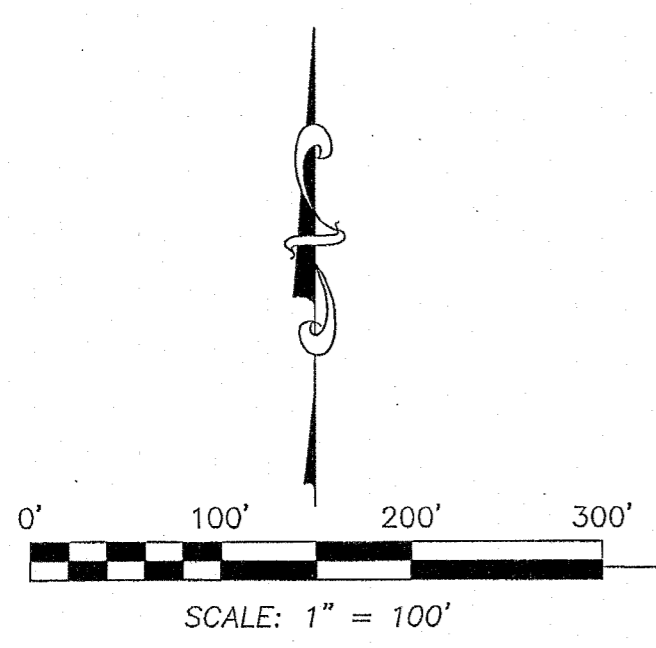
A PORTION OF THE SOUTHEAST QUARTER AND THE SOUTHWEST QUARTER OF SECTION 36, TOWNSHIP 3 NORTH, RANGE 10 EAST, WILLAMETTE MERIDIAN, CITY OF HOOD RIVER, HOOD RIVER COUNTY, OREGON.

HOOD RIVER COUNTY  
SURVEYOR'S OFFICE

CS# 2017 037  
DATE FILED: 8/31/2017  
BY: B.C.

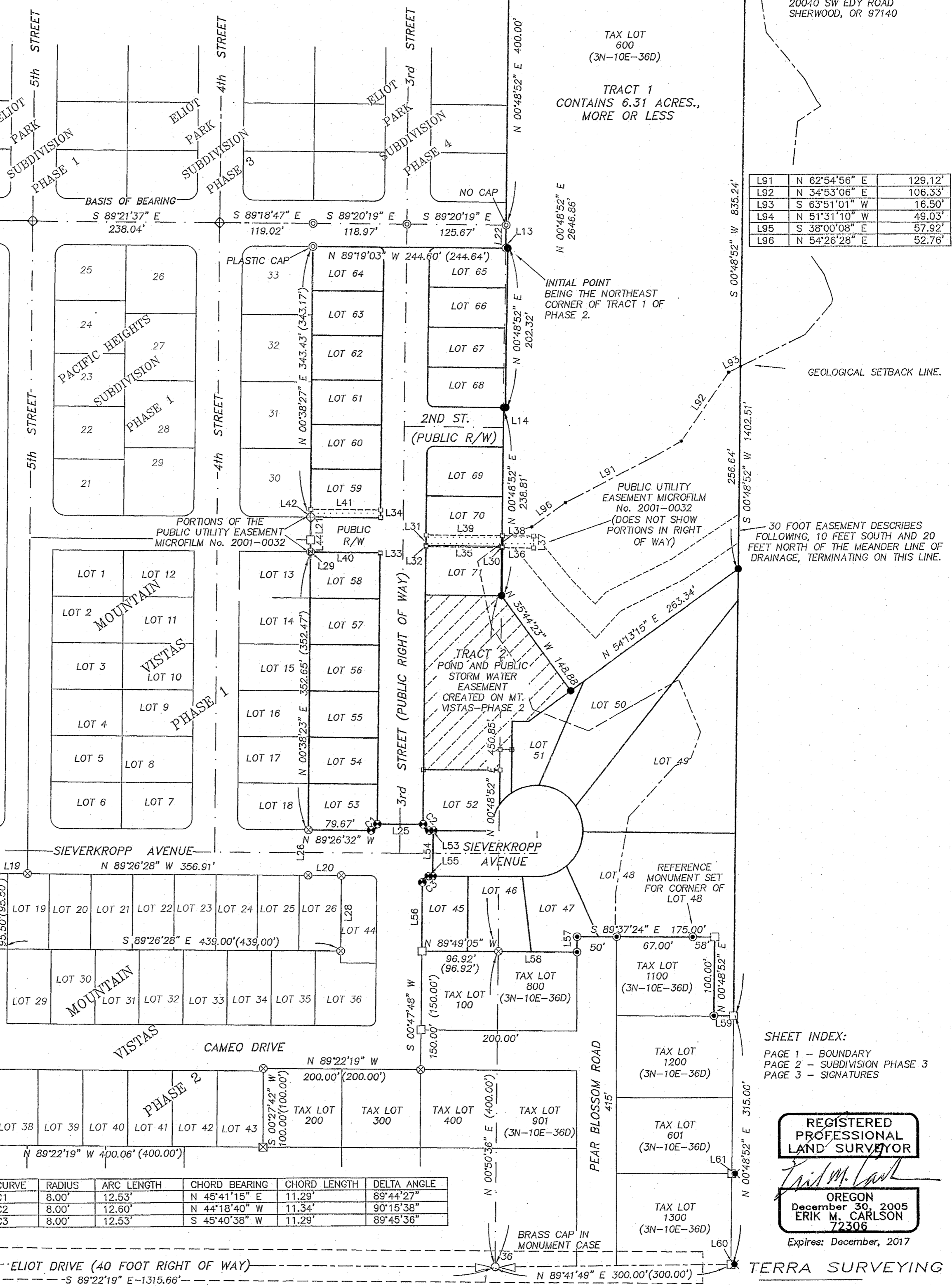
OWNER:  
SIEVERKROPP DEVELOPMENT, INC.  
20040 SW EDY ROAD  
SHERWOOD, OR 97140

CS# 2017 037-1



LINE	BEARING	DISTANCE
L13	N 89°19'03" W	2.54'
L14	S 89°19'03" E	2.54'
L15	N 00°31'36" E	28.93'
L16	N 00°30'07" E	29.27'
L17	N 00°44'01" E	96.81'
L18	S 89°34'44" W	50.00'
L19	S 89°26'28" E	39.98'
L20	N 89°26'28" W	42.11'
L21	N 00°34'14" E	29.00'
L22	N 01°01'52" E	28.94'
L24	S 89°18'35" E	10.30'
L25	S 89°30'45" E	58.00'
L26	N 00°38'23" E	57.95'
L28	N 00°42'27" E	95.51'
L29	N 00°38'23" E	1.00'
L30	N 00°48'52" E	1.77'
L31	S 00°49'01" W	13.25'
L32	S 00°49'01" W	1.56'
L33	S 00°49'01" W	1.00'
L34	N 00°49'01" E	10.00'
L35	S 89°18'35" E	96.62'
L36	S 89°18'35" E	40.01'
L37	N 00°38'43" E	15.00'
L38	N 89°18'35" W	39.97'
L39	N 89°18'35" W	96.63'
L40	N 89°19'03" W	88.77'
L41	N 89°18'35" W	89.02'
L42	S 00°38'27" W	10.00'
L43	N 00°34'12" E	29.00'
L44	N 00°34'14" E	15.00'
L47	N 54°16'12" E	18.94'
L48	N 68°37'21" W	10.97'
L49	N 18°00'40" W	55.86'
L50	S 33°47'26" E	61.71'
L51	S 11°37'43" E	85.30'
L52	N 52°48'58" E	39.28'
L53	S 89°26'29" E	5.10'
L54	S 01°02'38" W	58.00'
L55	N 89°26'29" W	5.00'
L56	S 00°47'48" W	87.07'
L57	N 00°40'18" E	19.30'
L58	S 89°14'03" E	100.00'
L59	N 89°43'09" W	25.00'
L60	N 89°41'49" E	4.36'
L61	S 89°41'28" E	3.92'

TABLE DOES NOT CONTAIN LINES 1-13, 27, 45, 46



3/4" IRON PIPE AT 1/16th CORNER

CURVE	RADIUS	ARC LENGTH	CHORD BEARING	CHORD LENGTH	DELTA ANGLE
C1	8.00'	12.53'	N 45°41'15" E	11.29'	89°44'27"
C2	8.00'	12.60'	N 44°18'40" W	11.34'	90°15'38"
C3	8.00'	12.53'	S 45°40'38" W	11.29'	89°45'36"

LEGEND:

- SET 5/8" X 30" IRON ROD WITH PLASTIC CAP (7/25/17)
- SET 5/8" X 30" IRON ROD WITH PLASTIC CAP (POST MON)
- FOUND 5/8" IRON ROD WITH RED CAP, L.S.72306, (C.S.2016-042)
- FOUND 5/8" IRON ROD WITH RED CAP, L.S.72306, (C.S.2015-021)
- FOUND 5/8" IRON ROD WITH YELLOW CAP, L.S.2393, (C.S.2001-068)
- FOUND 5/8" IRON ROD WITH CAP, L.S. 72306, (C.S.2017-016)
- ⊠ FOUND 5/8" IRON ROD WITH YELLOW CAP, L.S.932, (C.S.89097)
- ⊠ FOUND 5/8" IRON ROD WITH YELLOW CAP, L.S.2393, (C.S.2000-045)
- ⊠ FOUND 1-1/2" ALUMINUM CAP, L.S. 50800, (C.S.2007-105)
- ⊠ FOUND 1/2" IRON ROD WITH CAP, L.S. 1028, (C.S.2005-095)
- FOUND MONUMENT AS NOTED ON PLAT
- ⊠ FOUND 5/8" X 30" IRON ROD WITH NO CAP (C.S.83060)
- ( ) DEED OR PLAT CALL
- CALCULATED, NOT FOUND OR SET
- ANGLE POINT FOR GEOLOGICAL SETBACK

SHEET INDEX:  
PAGE 1 - BOUNDARY  
PAGE 2 - SUBDIVISION PHASE 3  
PAGE 3 - SIGNATURES

REGISTERED PROFESSIONAL LAND SURVEYOR

ERIK M. CARLSON  
72306  
Expires: December, 2017

TERRA SURVEYING

P.O. BOX 617  
HOOD RIVER, OREGON 97031  
PHONE: (541) 386-4531  
E-Mail: terra@gorge.net  
DATE: JULY 26, 2017  
PROJECT: 17076PHASE3  
SCALE: 1" = 100'  
ASSESSORS MAP: 3N-10E-36CD TL 9400  
ASSESSORS MAP: 3N-10E-36D TL 600

NOTE:

ORS 92.044(7). PROHIBITION OF UTILITY INFRASTRUCTURE WITHIN ONE FOOT OF ALL SURVEY MONUMENTS.

SHEET INDEX:

PAGE 1 - BOUNDARY
PAGE 2 - SUBDIVISION PHASE 3
PAGE 3 - SIGNATURES

SUBDIVISION PLAT OF MOUNTAIN VISTAS-PHASE 3



SCALE: 1" = 60'

PAGE 2 OF 3

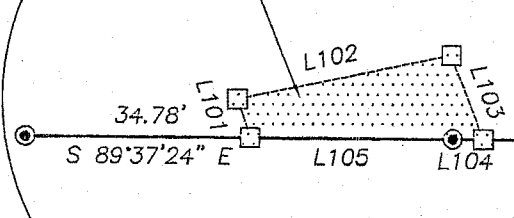
REGISTERED PROFESSIONAL LAND SURVEYOR

OREGON December 30, 2005 ERIK M. CARLSON 72306

Expires: December, 2017

EASEMENT DETAIL

NEW: A PRIVATE LANDSCAPE EASEMENT BENEFITING TAX LOT 1100.



MOUNTAIN VISTAS PHASE 1

Table with 3 columns: LINE, BEARING, DISTANCE. Lists lines L101 through L105 with their respective bearings and distances.

Table with 3 columns: LINE, BEARING, DISTANCE. Lists lines L62 through L100 with their respective bearings and distances.

Table with 5 columns: CURVE, RADIUS, ARC LENGTH, CHORD BEARING, CHORD LENGTH, DELTA ANGLE. Lists curves C4 through C18 with their geometric properties.

LEGEND:

- List of symbols and their meanings: SET 5/8" X 30" IRON ROD WITH PLASTIC CAP, FOUND 1-1/2" ALUMINUM CAP, SET 5/8" X 30" IRON ROD WITH ALUMINUM CAP, FOUND 5/8" IRON ROD WITH RED CAP, FOUND 5/8" IRON ROD WITH RED CAP, FOUND 5/8" IRON ROD WITH ALUMINUM CAP, FOUND 1-1/2" ALUMINUM CAP, ANGLE POINT FOR GEOLOGICAL SETBACK LINE, FOUND 5/8" IRON ROD WITH YELLOW CAP, FOUND MONUMENT OF RECORD AS NOTED ON PLAT, CALCULATED, NOT FOUND OR SET.

PORTIONS OF PUBLIC UTILITY EASEMENT MICROFILM No. 2001-0032 (DIMENSIONS ON PAGE 1)

TRACT 1 6.31 ACRES, ± SEE PAGE 1 FOR DETAILS

GEOLOGICAL SETBACK LINE.

PUBLIC UTILITY EASEMENT MICROFILM No. 2001-0032 (DIMENSIONS ON PAGE 1)

EASEMENT DESCRIBES FOLLOWING, 10 FEET SOUTH AND 20 FEET NORTH OF THE MEANDER LINE OF DRAINAGE

TRACT 2 POND AND PUBLIC STORM WATER EASEMENT CREATED ON PHASE 2 OF MT. VISTAS CONTAINS 0.70 ACRES, ±

REFERENCE MONUMENT TO THE CORNER TO THE EAST.

LANDSCAPE EASEMENT SEE DETAIL

REFERENCE MONUMENT TO THE CORNER TO THE EAST.

TAX LOT 1200 (3N-10E-36D)

TERRA SURVEYING

P.O. BOX 617 HOOD RIVER, OREGON 97031 PHONE: (541) 386-4531 E-Mail: terra@gorge.net

DATE: JULY 26, 2017

PROJECT: 17076PHASE3

SCALE: 1" = 60'

ASSESSORS MAP: 3N-10E-36CD TL 9400 ASSESSORS MAP: 3N-10E-36D TL 600

CS# 2017 037-2

LOCATION OF SURVEY:

A PORTION OF THE SOUTHEAST QUARTER AND THE SOUTHWEST QUARTER OF SECTION 36, TOWNSHIP 3 NORTH, RANGE 10 EAST, WILLAMETTE MERIDIAN, CITY OF HOOD RIVER, HOOD RIVER COUNTY, OREGON.

OWNER:

SIEVERKROPP DEVELOPMENT, INC.
20040 SW EDY ROAD
SHERWOOD, OR 97140

NARRATIVE:

THE PURPOSE OF THIS SURVEY WAS TO PLAT TAX LOT 9400 (3N-10E-36CD) AND TAX LOT 600 (3N-10E-36D) INTO PHASE 3 OF MOUNTAIN VISTAS SUBDIVISION. TAX LOT 9400 IS TRACT 1 OF MOUNTAIN VISTAS, PHASE 2. ALL OF THE EXTERIOR BOUNDARY MONUMENTS ARE STILL INTACT AND HELD AS CONTROLLING MONUMENTS. TAX LOT 600 IS DESCRIBED AS MEASURING ALONG THE CENTER SECTION LINE TO A POINT 400 FOOT NORTH OF AN IRON PIPE AT THE NORTHWEST CORNER OF THE SOUTHWEST QUARTER OF THE SOUTHEAST QUARTER OF SECTION 36. THE PIPE WAS NOT RECOVERED, BUT WE DID FIND A IRON ROD, WHICH HISTORICALLY HAD A 1-1/2" ALUMINUM CAP AT THAT POSITION. THE DESCRIPTION THEN CALLS EAST PARALLEL TO THE NORTH LINE OF THE NORTHWEST CORNER OF THE SOUTHWEST QUARTER WHICH IS CALCULATED BY USING THE SECTION BREAKDOWN FROM C.S.95111 TO A DISTANCE OF 300 FEET, THENCE SOUTH AND PARALLEL TO THE CENTER SECTION LINE TO A POINT 150 FEET NORTH OF THE SOUTH LINE OF THE SECTION. THE DESCRIPTION IS BOUND BY SEVERAL DEED EXCEPTIONS AT THE SOUTHEAST CORNER OF THIS PLAT. THE EXCEPTIONS FIT TOGETHER VERY WELL. TAX LOT 1100 IS AN EXCEPTION THAT HAS COMMON BOUNDARIES WITH THE SOUTHEAST CORNER AS DESCRIBED ON DEED BOOK 80, PAGE 206. WE DID NOT RECOVER DEED CORNERS OF THIS PROPERTY AS IT DOES NOT APPEAR CORNERS WERE SET ON C.S.1601. THE PROPERTY MEASURES 315 FEET NORTH OF THE SECTION LINE AND MEASURES 100' X 125' FEET AS MEASURES FROM THE EAST, THIS LEAVES THE 25 FOOT LEG AT THE EXTREME SOUTHEAST OF THE PLAT. THE NORTH-SOUTH POSITION OF SAID LEG WAS DETERMINED BY MONUMENTS RECOVERED ON THE EAST LINE OF TAX LOT 1300 AS SURVEYED BY DOWD ON C.S.2005-095. WE DID NOT ACCEPT THESE MONUMENTS AS THEY WERE SURVEYED AND MEASURED 304.31 EAST OF CENTER SECTION LINE. WE SHOW THESE MONUMENTS AS REFERENCES TO THE EAST LINE OF THE 300 FOOT OFFSET.

THE BASIS OF BEARING FOR THIS PLAT WAS MEASURED BETWEEN TWO 5/8" IRON RODS WITH 1-1/2" ALUMINUM CAPS MONUMENTING THE CENTERLINE OF PACIFIC AVENUE AS MEASURED ON C.S.2015-0021.

SURVEYOR'S CERTIFICATE:

I, ERIK M. CARLSON, REGISTERED LAND SURVEYOR FOR THE STATE OF OREGON, BEING FIRST DULY SWORN, DEPOSED AND SAY THAT I HAVE CORRECTLY SURVEYED THE PROPERTY DESCRIBED IN THE LEGAL DESCRIPTION AND MARKED WITH LEGAL MONUMENTS THE LAND REPRESENTED ON THE PLAT OF "MOUNTAIN VISTAS-PHASE 3" LOCATED IN A PORTION OF THE SOUTHWEST QUARTER AND SOUTHEAST QUARTER OF SECTION 36 IN TOWNSHIP 3 NORTH, RANGE 10 EAST OF THE WILLAMETTE MERIDIAN, CITY OF HOOD RIVER, HOOD RIVER COUNTY, STATE OF OREGON. SAID PHASE 3 IS DESCRIBED MORE PARTICULARLY AS FOLLOWS:

TRACT 1 OF THE MOUNTAIN VISTAS, PHASE 2, SUBDIVISION PLAT RECORDED ON JUNE 27, 2016 IN HOOD RIVER COUNTY (C.S.2016-042), TOGETHER WITH THE FOLLOWING DESCRIBED TRACT.

COMMENCING AT A BRASS CAP MONUMENTING THE SOUTH QUARTER CORNER OF SECTION 36; THENCE NORTH 00°50'36" EAST A DISTANCE OF 400 FEET TO A 5/8" IRON ROD, L.S.72306, BEING THE POINT OF BEGINNING OF THE FOLLOWING TRACT.

THENCE SOUTH 89°14'03" EAST A DISTANCE OF 100.00 FEET TO THE WESTERLY RIGHT OF WAY OF PEAR BLOSSOM ROAD AS DESCRIBED IN DEED BOOK 80, PAGE 79; THENCE NORTH 00°40'18" EAST A DISTANCE OF 19.30 FEET TO A POINT; THENCE SOUTH 89°37'24" EAST A DISTANCE OF 175.00 FEET TO A POINT; THENCE SOUTH 00°48'52" WEST A DISTANCE OF 100.00 FEET TO A POINT; THENCE SOUTH 89°43'09" EAST A DISTANCE OF 25.00 FEET TO A POINT; NORTH 00°48'52" EAST A DISTANCE OF 1402.51 FEET TO A POINT; THENCE NORTH 89°40'29" WEST A DISTANCE OF 300 FEET TO THE CENTER QUARTER LINE OF SECTION 36; THENCE SOUTH 00°48'52" WEST A DISTANCE OF 1320.92 FEET TO THE POINT OF BEGINNING.

THE INITIAL POINT IS A 5/8" IRON ROD, L.S.72306 FOUND AT THE NORTHEAST CORNER OF TRACT 1 OF THE MOUNTAIN VISTA, PHASE 2 SUBDIVISION.

ERIK M. CARLSON PLS 72306

APPROVALS:

THE DIRECTOR OF RECORDS AND ASSESSMENTS, AND THE DIRECTOR OF BUDGET AND FINANCE AND TAX COLLECTOR, RESPECTIVELY, OF HOOD RIVER COUNTY, OREGON, HEREBY CERTIFY THAT WE HAVE EXAMINED THE PLAT OF "MOUNTAIN VISTAS-PHASE 3" IN THE COUNTY OF HOOD RIVER AND THAT THE NAME ADOPTED FOR SAID PLAT IS A PROPER NAME AND NOT INCLUDED IN ANY OTHER SUBDIVISION IN HOOD RIVER COUNTY, AND FURTHER CERTIFY THAT ALL ASSESSMENTS DUE HEREON HAVE BEEN FULLY PAID AS REQUIRED BY LAW AND WE HEREBY APPROVE SAID PLAT.

HOOD RIVER COUNTY DIRECTOR OF BUDGET AND FINANCE, TREASURER/TAX COLLECTOR

HOOD RIVER COUNTY DIRECTOR OF RECORDS AND ASSESSMENTS

THE PLAT OF "MOUNTAIN VISTAS-PHASE 3" WAS EXAMINED AND APPROVED BY ME THIS 14th DAY OF August, 2017.

HOOD RIVER COUNTY SURVEYOR

THE PLAT OF "MOUNTAIN VISTAS-PHASE 3" WAS EXAMINED AND APPROVED BY ME THIS 16th DAY OF August, 2017.

CITY OF HOOD RIVER PUBLIC WORKS AND ENGINEERING DIRECTOR

THE PLAT OF "MOUNTAIN VISTAS-PHASE 3" WAS EXAMINED AND APPROVED BY ME THIS 15th DAY OF August, 2017.

CITY OF HOOD RIVER RECORDER

THE PLAT OF "MOUNTAIN VISTAS-PHASE 3" WAS EXAMINED AND APPROVED BY ME THIS 16th DAY OF August, 2017.

CITY OF HOOD RIVER PLANNING DIRECTOR

COVENANTS AND RESTRICTIONS:

THE DECLARATION OF COVENANTS, CONDITIONS AND RESTRICTIONS FOR "MOUNTAIN VISTAS-PHASE 3" IS FILED UNDER SEPARATE DOCUMENTS AS RECORDER'S FILE FE NO.2015-0884, RECORDED MARCH 31, 2015, HOOD RIVER COUNTY DEED RECORDS.

THE PLAT OF "MOUNTAIN VISTAS-PHASE 3" WAS EXAMINED AND APPROVED BY ME THIS 15th DAY OF August, 2017.

CITY OF HOOD RIVER MAYOR

THE PLAT OF "MOUNTAIN VISTAS-PHASE 3" WAS EXAMINED AND APPROVED BY ME THIS 21st DAY OF August, 2017.

CHAIRPERSON HOOD RIVER COUNTY COMMISSIONERS

THE PLAT OF "MOUNTAIN VISTAS-PHASE 3" WAS EXAMINED AND APPROVED BY ME THIS 21st DAY OF August, 2017.

HOOD RIVER COUNTY COMMISSIONER

THE PLAT OF "MOUNTAIN VISTAS-PHASE 3" WAS EXAMINED AND APPROVED BY ME THIS 21st DAY OF August, 2017.

HOOD RIVER COUNTY COMMISSIONER

THE PLAT OF "MOUNTAIN VISTAS-PHASE 3" WAS EXAMINED AND APPROVED BY ME THIS 21st DAY OF August, 2017.

HOOD RIVER COUNTY COMMISSIONER

THE PLAT OF "MOUNTAIN VISTAS-PHASE 3" WAS EXAMINED AND APPROVED BY ME THIS 21st DAY OF August, 2017.

HOOD RIVER COUNTY COMMISSIONER

POST MONUMENTATION CERTIFICATE:

I, ERIK M. CARLSON, OREGON REGISTERED PROFESSIONAL LAND SURVEYOR No.72306, HEREBY CERTIFY THAT POST MONUMENTATION OF INTERIOR LOT CORNERS AS NOTED ON PLAT AS HAVING 5/8" X 30" IRON RODS, L.S. 72306 WITH RED PLASTIC CAPS (ALUMINUM CAPS IN ROADWAY) WILL BE COMPLETED ON OR BEFORE JUNE 12, 2019.

ERIK M. CARLSON, L.S. 72306

RECORDING INFORMATION:

PLAT NUMBER: 20172983
INSTRUMENT RECEIVED ON THE 30th DAY OF August, 2017 AT 11:35 AM.
HOOD RIVER COUNTY CLERK

HOOD RIVER COUNTY SURVEYOR'S OFFICE

CS# 2017 037

DATE FILED: 8/31/2017

BY: BL

REFERENCES:

- FILED IN THE HOOD RIVER COUNTY SURVEYORS OFFICE.
C.S. No. 0829. SURVEY FOR SIEVERKROPP BY PERKINS. DATED APRIL 19, 1960.
C.S. No. 83080. SURVEY FOR MANFULL BY GAYLORD (L.S.1815). FILED DECEMBER 16, 1983.
C.S. No. 85043. SURVEY FOR RICARDS BY CRON (L.S.1028). FILED JULY 12, 1985.
C.S. No. 89097. SURVEY FOR HAMADA BY KLEIN (L.S. 932). FILED NOVEMBER 3, 1989.
C.S. No. 95111. SURVEY FOR PACIFICORP BY HEIDECKE (L.S.2132). FILED NOVEMBER 7, 1995.
C.S. No. 99069. PARTITION PLAT NO.9914 FOR NELSON BY DOWD (L.S.2393). FILED AUGUST 24, 1999.
C.S. No. 2000-014. SURVEY FOR BOWERS BY KLEIN (L.S.932). FILED FEBRUARY 25, 2000.
C.S. No. 2000-045. SUBDIVISION PLAT OF PACIFIC HEIGHTS, PHASE ONE FOR SIEVERKROPP BY DOWD (L.S.2393) FILED MAY 26, 2000.
C.S. No. 2001-068. SUBDIVISION PLAT OF PACIFIC HEIGHTS, PHASE TWO FOR SIEVERKROPP BY DOWD (L.S.2393) FILED SEPTEMBER 18, 2001.
C.S. No. 2002-049. PARTITION PLAT No. 2002-16p FOR SIEVERKROPP BY GAYLORD (L.S.1815). FILED JULY 23, 2002.
C.S. No. 2003-024. PARTITION PLAT No. 2003-10p FOR SIEVERKROPP BY HUFFMON (L.S.2786). FILED APRIL 16, 2003.
C.S. No. 2004-084. SUBDIVISION PLAT OF ELIOT PARK SUBDIVISION, PHASE ONE FOR SIEVERKROPP BY BESEDA (L.S.50800). FILED DECEMBER 29, 2004.
C.S. No. 2005-038. SUBDIVISION PLAT OF ELIOT PARK, PHASE TWO FOR SIEVERKROPP BY BESEDA (L.S.50800). FILED JUNE 16, 2005.
C.S. No. 2005-095. PLA SURVEY FOR EASTMAN BY DOWD (L.S.2393). FILED NOVEMBER 2, 2005.
C.S. No. 2006-019. SUBDIVISION PLAT OF ELIOT PARK SUBDIVISION, PHASE THREE FOR SIEVERKROPP BY BESEDA (L.S.50800). FILED MARCH 9, 2006.
C.S. No. 2007-105. SUBDIVISION PLAT OF ELIOT PARK SUBDIVISION, PHASE FOUR FOR SIEVERKROPP BY BESEDA (L.S.50800). FILED OCTOBER 8, 2007.
C.S. No. 2015-021. SUBDIVISION PLAT OF MOUNTAIN VISTAS, PHASE ONE FOR SIEVERKROPP BY CARLSON (L.S.72306). FILED MARCH 31, 2015.
C.S. No. 2016-042. SUBDIVISION PLAT OF MOUNTAIN VISTAS, PHASE TWO FOR SIEVERKROPP BY CARLSON (L.S.72306). FILED JUNE 30, 2016.
C.S. No. 2017-016. PARTITION PLAT NO. 201705P FOR CITY OF HOOD RIVER AND WERTGEN BY CARLSON (L.S.72306). FILED MARCH 23, 2017.

TITLE REPORT REFERENCES:

- EASEMENTS OF RECORD, PER AMERITITLE SORT REPORT No.178747AM
5) RURAL WATER ANNEXATION AGREEMENT, INST#840369
6) COVENANTS, CONDITIONS AND RESTRICTIONS, INST#2015-00884
7) PUBLIC UTILITY EASEMENT TO THE CITY OF HOOD RIVER INST#2001-032, AS SHOWN ON PAGE 1.

NOTE REGARDING TEMPORARY EASEMENTS FROM PHASE 2:

TEMPORARY ACCESS AND PUBLIC STORM EASEMENTS WHICH WERE CREATED ON PHASE 2 ARE RELINQUISHED WITH THE RECORDING OF THIS PLAT.

DECLARATION AND DEDICATION:

I, Thomas Sieverkropp, VICE PRESIDENT OF SIEVERKROPP DEVELOPMENT, INC. AS OWNER DOES HEREBY MAKE, ESTABLISH & DECLARE THE PLAT MAP TO BE A TRUE AND CORRECT MAP OF THE LAND OWNED AND LAID OUT AS THE PLAT OF "MOUNTAIN VISTAS-PHASE 3" AND HAS CAUSED THE SUBDIVISION TO BE PREPARED AND THE PROPERTY SUBDIVIDED IN ACCORDANCE WITH THE PROVISIONS OF ORS CHAPTER 92, LAND BEING MORE PARTICULARLY DESCRIBED IN THE SURVEYOR'S CERTIFICATE HERETO ANNEXED AND SAID OWNER DOES HEREBY DEDICATE TO THE PUBLIC FOREVER ALL STREETS, PATHWAYS AND PUBLIC EASEMENTS AND CREATE PRIVATE EASEMENTS SHOWN ON SUCH PLAT.

THOMAS SIEVERKROPP
VICE PRESIDENT OF SIEVERKROPP DEVELOPMENT, INC.

ACKNOWLEDGMENT:

STATE OF OREGON )
COUNTY OF HOOD RIVER )SS.

THIS INSTRUMENT WAS ACKNOWLEDGED BEFORE ME ON THIS 11th DAY OF August, 2017, BEFORE ME A NOTARY PUBLIC FOR THE STATE OF OREGON, PERSONALLY APPEARED Thomas Sieverkropp, VICE PRESIDENT OF SIEVERKROPP DEVELOPMENT, INC., BEING FIRST DULY SWORN, SAID THAT HE DID ACKNOWLEDGE THIS INSTRUMENT OF HIS FREE AND VOLUNTARY ACT.

Nancy Jane Carlson
PRINT NAME OF NOTARY

Signature of Notary

NOTARY PUBLIC- OREGON

COMMISSION NO: 939097

MY COMMISSION EXPIRES: May 14, 2019

SHEET INDEX:

- PAGE 1 - BOUNDARY
PAGE 2 - SUBDIVISION PHASE 3
PAGE 3 - SIGNATURES

REGISTERED PROFESSIONAL LAND SURVEYOR

ERIK M. CARLSON
72306

Expires: December, 2017

TERRA SURVEYING

P.O. BOX 617
HOOD RIVER, OREGON 97031
PHONE: (541) 386-4531
E-Mail: terra@gorge.net

DATE: JULY 26, 2017

PROJECT: 17076PHASE3

SCALE: 1" = 60'

ASSESSORS MAP: 3N-10E-36CD TL 9400

ASSESSORS MAP: 3N-10E-36D TL 600