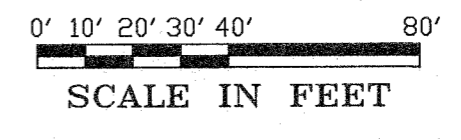
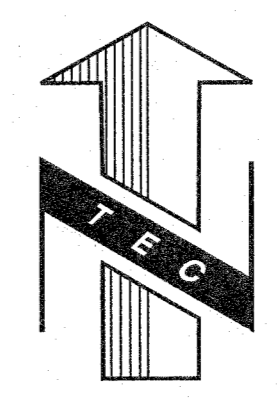


**LEGEND :**

- ⊙ SET 5/8" X 30" REBAR WITH YELLOW PLASTIC CAP "HUFFMON PLS 2786"
- ⊙ FOUND MONUMENTS, AS NOTED.
- CALCULATED CORNERS, NOT SET.

**NOTES :**

1. BEARINGS ARE BASED ON SURVEY REFERENCES No. 1 AND 2 BETWEEN THE EAST QUARTER CORNER AND SOUTHEAST CORNER OF SECTION 24.
2. MONUMENTS SHOWN HEREON WERE RECOVERED OR SET ON NOVEMBER 18, 2016.



**REFERENCES :**

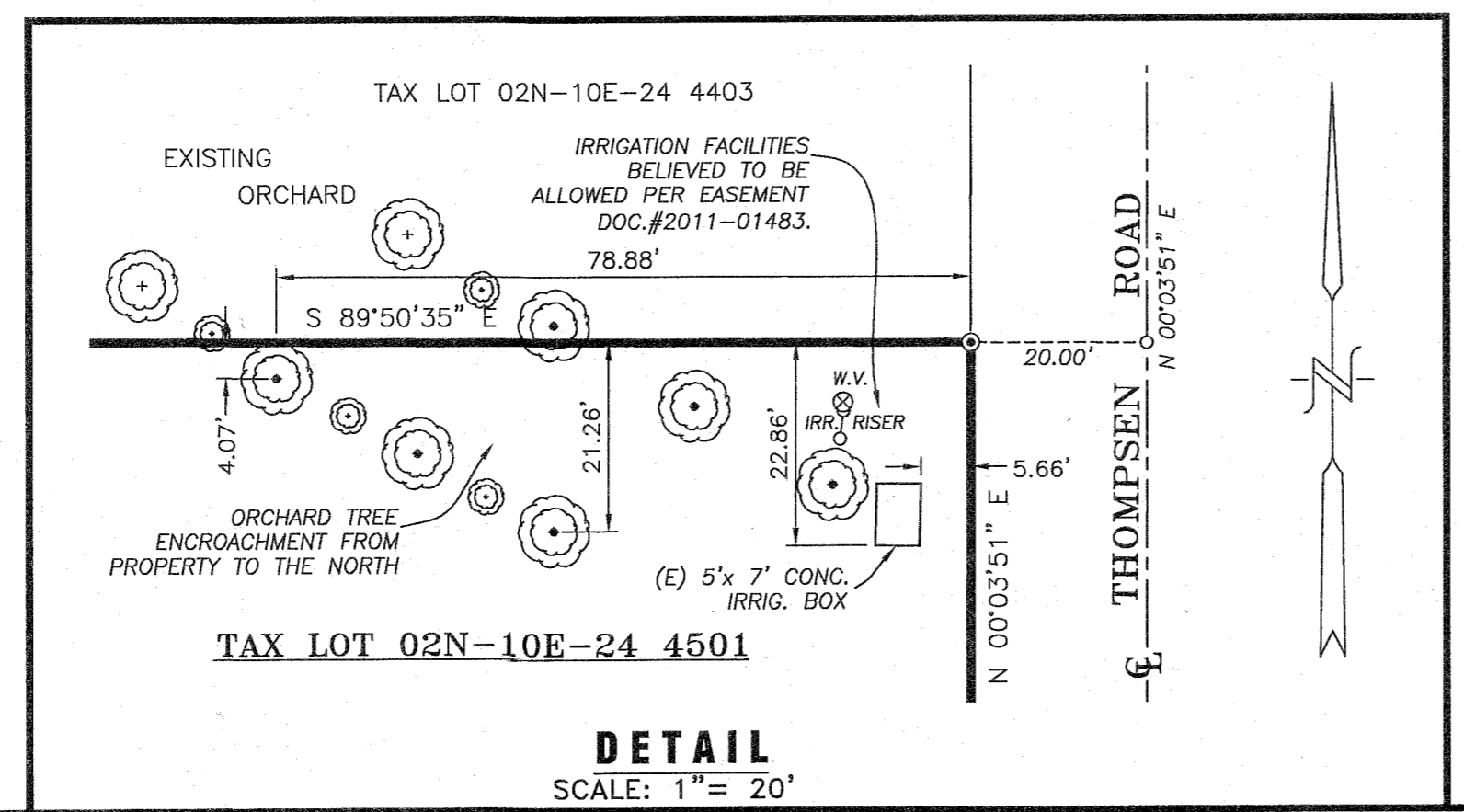
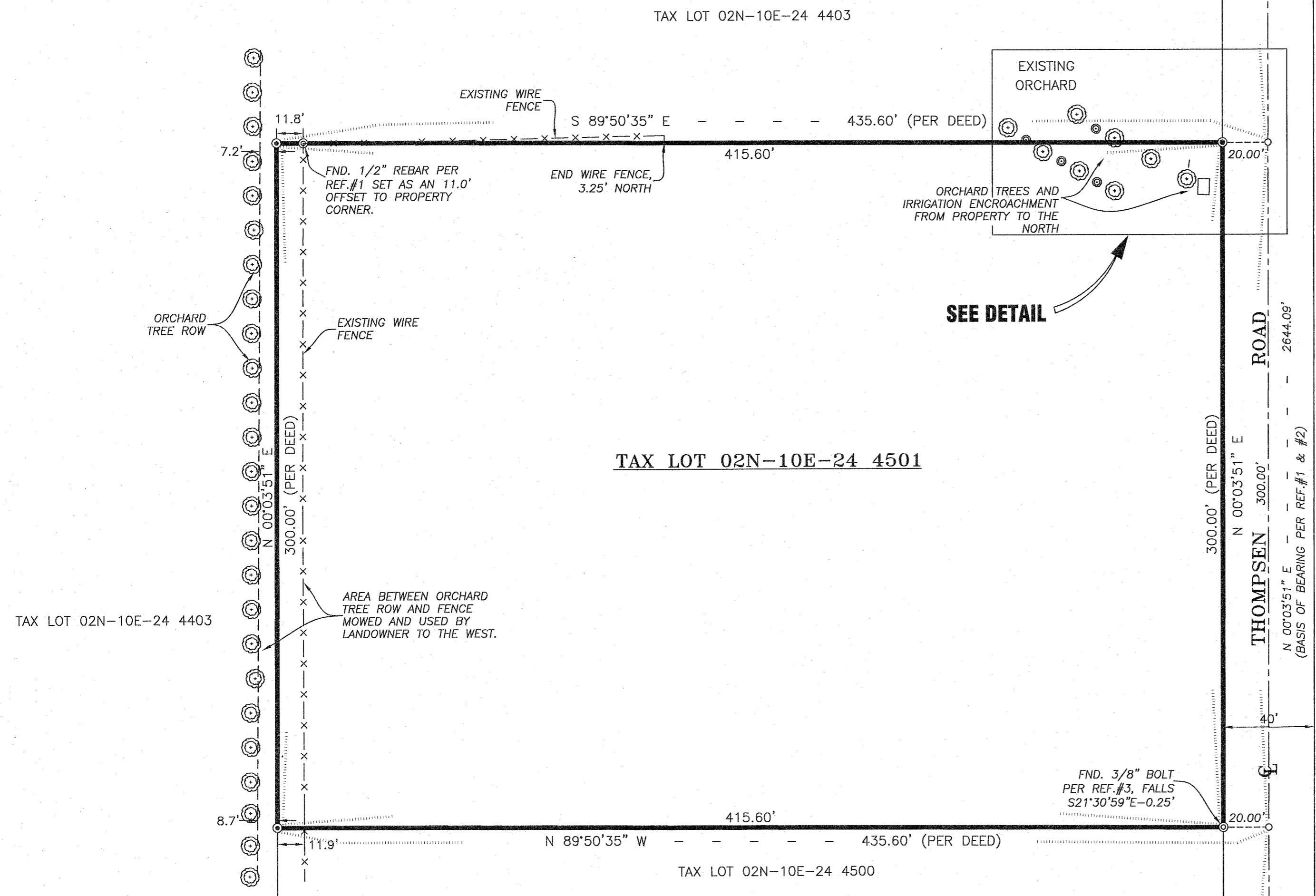
- 1) SURVEY FOR WALTER WELLS & SONS BY DLC SURVEYING DANNY L. CRON, PLS 1028 FILED JULY 27, 1995 C.S. #95054
- 2) PARTITION PLAT No. 201008P BY KLEIN & ASSOCIATES, INC. JAMES M. KLEIN, PLS 59002 FILED OCTOBER 13, 2010 C.S. 2010049
- 3) SURVEY FOR HOOD RIVER WORKSHOP BY TENNESON ENGR. CORP. WO#5022 FILED MARCH 26, 1975 C.S. #7514

**NARRATIVE :**

THE PURPOSE OF THIS SURVEY WAS TO ESTABLISH AND MONUMENT THE EXTERIOR BOUNDARY OF TAX LOT 2N-10E-24 4501. THE SUBJECT PROPERTY IS IN THE SOUTHEAST 1/4 OF SECTION 24, TOWNSHIP 2 NORTH, RANGE 10 EAST, W.M. PRIOR TO COMPLETING THE FIELD WORK AND MAPPING NECESSARY FOR THIS SURVEY, RESEARCH WAS MADE TO OBTAIN A COPY OF THE CURRENT DEED AND A TITLE REPORT FOR THE SUBJECT PROPERTY AND TO OBTAIN COPIES OF PRIOR SURVEYS OR PLATS COMPLETED ON OR IN THE VICINITY OF THE SUBJECT PROPERTY. PRIOR SURVEYS UTILIZED AS A PART OF THE RESOLUTION SHOWN HEREON ARE LISTED AS REFERENCES.

IN THE FIELD, MONUMENTS FROM THE REFERENCES WERE TIED AS SHOWN. REFERENCES #1 AND #2 ESTABLISHED THE EAST LINE OF THE SOUTHEAST 1/4 OF SECTION 24. MONUMENTS WERE ALSO FOUND ON THE SUBJECT PROPERTY PER REFERENCES #1 AND #3 AS SHOWN. MISSING CORNERS WERE REESTABLISHED PER DEED AND CONSISTENT WITH REFERENCES #1 AND #3. SINCE THE ESTABLISHMENT OF THE EXTERIOR BOUNDARY OF THE SUBJECT PROPERTY BY REFERENCES #1 AND #3, THE SOUTHWEST CORNER OF THE SOUTHEAST 1/4 HAS BEEN REESTABLISHED IN A DIFFERENT LOCATION. THIS PROPERTY WAS MONUMENTED AND THE LINES ACTED UPON PRIOR TO THIS CHANGE; THEREFORE, THE RESOLUTION OF THE SOUTHEAST 1/4 AND BOUNDARY OF THE SUBJECT PROPERTY WAS REESTABLISHED PER DEED AND AS LAID OUT IN REFERENCES #1 AND #3. THIS COMPLETED THE ESTABLISHMENT OF THE BOUNDARY OF THE SUBJECT PROPERTY. MONUMENTS WERE SET AT THE CORNERS AS SHOWN. ALSO SHOWN ARE ENCROACHMENTS AND USAGE BY THE ADJACENT OWNER TO THE NORTH AND WEST.

SET MONUMENTS ARE 5/8" X 30" REBAR WITH YELLOW PLASTIC CAP INSCRIBED "HUFFMON PLS 2786".



REGISTERED PROFESSIONAL LAND SURVEYOR

*Bradley R. Huffmon*

OREGON  
 JANUARY 21, 1997  
 BRADLEY R. HUFFMON  
 2786

EXPIRES: 06/30/2017

Date	No.	Revisions	By	App.
SURVEY FOR OPPORTUNITY CONNECTIONS				
TAX LOT 02N-10E-24 4501 IN THE SE1/4 OF SECTION 24, TOWNSHIP 2 N., RANGE 10 E. W.M. HOOD RIVER COUNTY, OREGON				
<b>TENNESON ENGINEERING CORP.</b> CONSULTING ENGINEERS 3775 CRATES WAY THE DALLES, OREGON 97058 PH. 541-296-9177 FAX 541-296-6657				
Survey	Calculation	Design	Date	Scale
B.R.H.	B.B.B.		12/02/2016	1"=40'
Drawn	Drawing Number	Work Order No.	Sheet	
S.D.H.	WORK ORDERS\14900\14959\DRAWINGS\14959.Syd.dwg	14959	1 of 1	