

PROPERTY LINE ADJUSTMENT SURVEY  
for  
THE PORT OF HOOD RIVER AND TERRY BRANDT  
2N-10E-11B, TAX LOTS 2501 & 1603

LOCATION OF SURVEY:

A PORTION OF PARCEL 3 OF PARTITION PLAT NO. 9504, LOCATED IN THE NORTHWEST QUARTER OF SECTION 11, TOWNSHIP 2 NORTH, RANGE 10 EAST, WILLAMETTE MERIDIAN, HOOD RIVER COUNTY, OREGON.

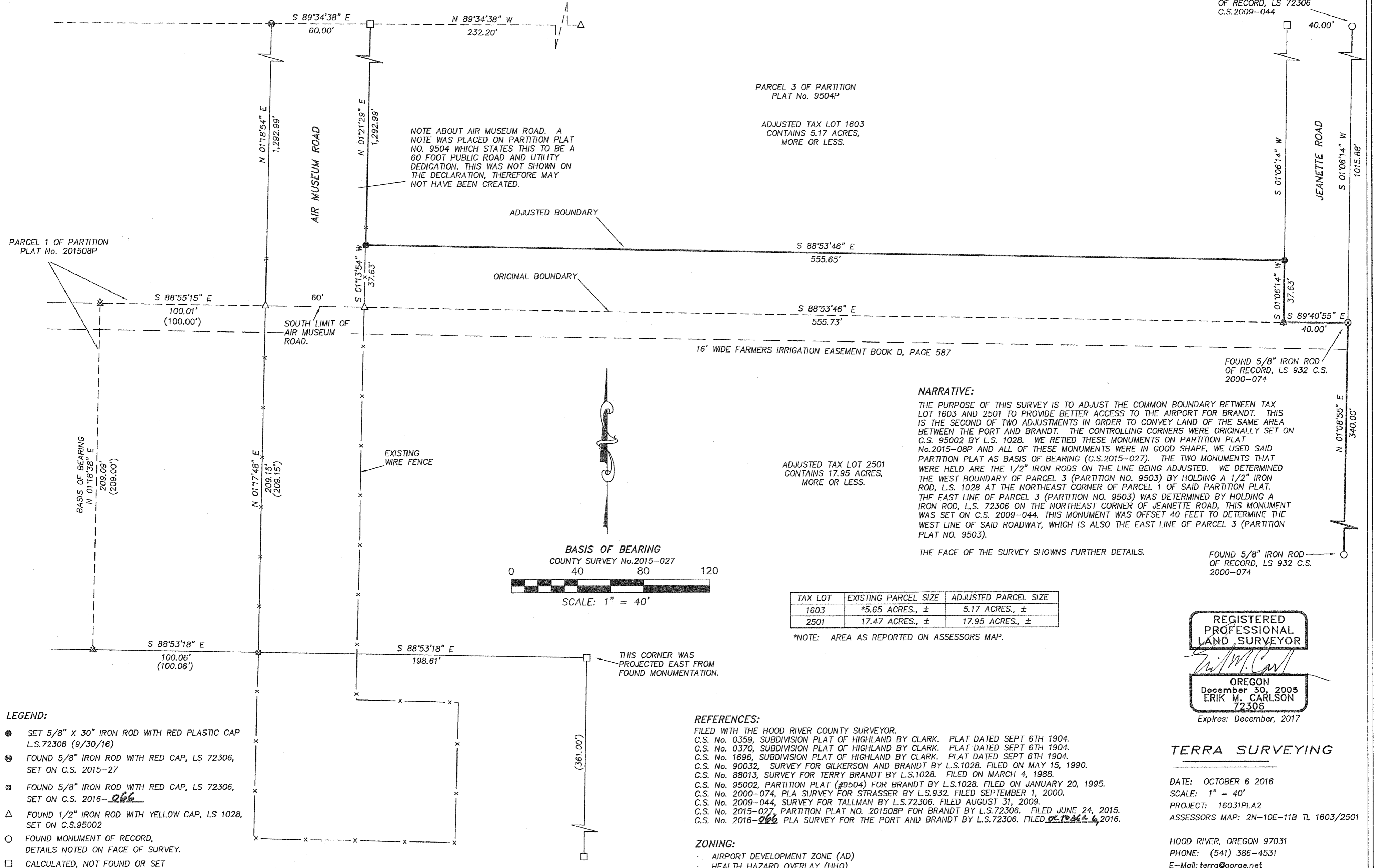
HOOD RIVER COUNTY  
SURVEYOR'S OFFICE

CS# 2016 067

DATE FILED: 10/6/2016

BY: *EL*

☒ TUCKER ROAD (60' R/W)



NOTE ABOUT AIR MUSEUM ROAD. A NOTE WAS PLACED ON PARTITION PLAT NO. 9504 WHICH STATES THIS TO BE A 60 FOOT PUBLIC ROAD AND UTILITY DEDICATION. THIS WAS NOT SHOWN ON THE DECLARATION, THEREFORE MAY NOT HAVE BEEN CREATED.

PARCEL 3 OF PARTITION PLAT No. 9504P

ADJUSTED TAX LOT 1603 CONTAINS 5.17 ACRES, MORE OR LESS.

ADJUSTED TAX LOT 2501 CONTAINS 17.95 ACRES, MORE OR LESS.

NARRATIVE:

THE PURPOSE OF THIS SURVEY IS TO ADJUST THE COMMON BOUNDARY BETWEEN TAX LOT 1603 AND 2501 TO PROVIDE BETTER ACCESS TO THE AIRPORT FOR BRANDT. THIS IS THE SECOND OF TWO ADJUSTMENTS IN ORDER TO CONVEY LAND OF THE SAME AREA BETWEEN THE PORT AND BRANDT. THE CONTROLLING CORNERS WERE ORIGINALLY SET ON C.S. 95002 BY L.S. 1028. WE RETIED THESE MONUMENTS ON PARTITION PLAT No.2015-08P AND ALL OF THESE MONUMENTS WERE IN GOOD SHAPE, WE USED SAID PARTITION PLAT AS BASIS OF BEARING (C.S.2015-027). THE TWO MONUMENTS THAT WERE HELD ARE THE 1/2" IRON RODS ON THE LINE BEING ADJUSTED. WE DETERMINED THE WEST BOUNDARY OF PARCEL 3 (PARTITION NO. 9503) BY HOLDING A 1/2" IRON ROD, L.S. 1028 AT THE NORTHEAST CORNER OF PARCEL 1 OF SAID PARTITION PLAT. THE EAST LINE OF PARCEL 3 (PARTITION NO. 9503) WAS DETERMINED BY HOLDING A IRON ROD, L.S. 72306 ON THE NORTHEAST CORNER OF JEANETTE ROAD, THIS MONUMENT WAS SET ON C.S. 2009-044. THIS MONUMENT WAS OFFSET 40 FEET TO DETERMINE THE WEST LINE OF SAID ROADWAY, WHICH IS ALSO THE EAST LINE OF PARCEL 3 (PARTITION PLAT NO. 9503).

THE FACE OF THE SURVEY SHOWNS FURTHER DETAILS.

TAX LOT	EXISTING PARCEL SIZE	ADJUSTED PARCEL SIZE
1603	*5.65 ACRES., ±	5.17 ACRES., ±
2501	17.47 ACRES., ±	17.95 ACRES., ±

\*NOTE: AREA AS REPORTED ON ASSESSORS MAP.

FOUND 5/8" IRON ROD OF RECORD, LS 72306 C.S.2009-044

FOUND 5/8" IRON ROD OF RECORD, LS 932 C.S. 2000-074

FOUND 5/8" IRON ROD OF RECORD, LS 932 C.S. 2000-074

THIS CORNER WAS PROJECTED EAST FROM FOUND MONUMENTATION.

- LEGEND:
- SET 5/8" X 30" IRON ROD WITH RED PLASTIC CAP L.S.72306 (9/30/16)
  - ⊙ FOUND 5/8" IRON ROD WITH RED CAP, LS 72306, SET ON C.S. 2015-27
  - ⊗ FOUND 5/8" IRON ROD WITH RED CAP, LS 72306, SET ON C.S. 2016-066
  - △ FOUND 1/2" IRON ROD WITH YELLOW CAP, LS 1028, SET ON C.S.95002
  - FOUND MONUMENT OF RECORD, DETAILS NOTED ON FACE OF SURVEY.
  - CALCULATED, NOT FOUND OR SET
  - ( ) RECORD CALL

- REFERENCES:
- FILED WITH THE HOOD RIVER COUNTY SURVEYOR.
  - C.S. No. 0359, SUBDIVISION PLAT OF HIGHLAND BY CLARK. PLAT DATED SEPT 6TH 1904.
  - C.S. No. 0370, SUBDIVISION PLAT OF HIGHLAND BY CLARK. PLAT DATED SEPT 6TH 1904.
  - C.S. No. 1696, SUBDIVISION PLAT OF HIGHLAND BY CLARK. PLAT DATED SEPT 6TH 1904.
  - C.S. No. 90032, SURVEY FOR GILKERSON AND BRANDT BY L.S.1028. FILED ON MAY 15, 1990.
  - C.S. No. 88013, SURVEY FOR TERRY BRANDT BY L.S.1028. FILED ON MARCH 4, 1988.
  - C.S. No. 95002, PARTITION PLAT (#9504) FOR BRANDT BY L.S.1028. FILED ON JANUARY 20, 1995.
  - C.S. No. 2000-074, PLA SURVEY FOR STRASSER BY L.S.932. FILED SEPTEMBER 1, 2000.
  - C.S. No. 2009-044, SURVEY FOR TALLMAN BY L.S.72306. FILED AUGUST 31, 2009.
  - C.S. No. 2015-027, PARTITION PLAT NO. 201508P FOR BRANDT BY L.S.72306. FILED JUNE 24, 2015.
  - C.S. No. 2016-066, PLA SURVEY FOR THE PORT AND BRANDT BY L.S.72306. FILED ~~09-19-2016~~ 10-06-2016.

- ZONING:
- AIRPORT DEVELOPMENT ZONE (AD)
  - HEALTH HAZARD OVERLAY (HHO)
  - AIRPORT HEIGHT-HORIZONTAL AND AIRPORT- HEIGHT TRANSITIONAL

REGISTERED PROFESSIONAL LAND SURVEYOR

*Erik M. Carlson*  
OREGON  
December 30, 2005  
ERIK M. CARLSON  
72306

Expires: December, 2017

TERRA SURVEYING

DATE: OCTOBER 6 2016  
SCALE: 1" = 40'  
PROJECT: 16031PLA2  
ASSESSORS MAP: 2N-10E-11B TL 1603/2501

HOOD RIVER, OREGON 97031  
PHONE: (541) 386-4531  
E-Mail: terra@gorge.net  
www.terrandsurveying.com