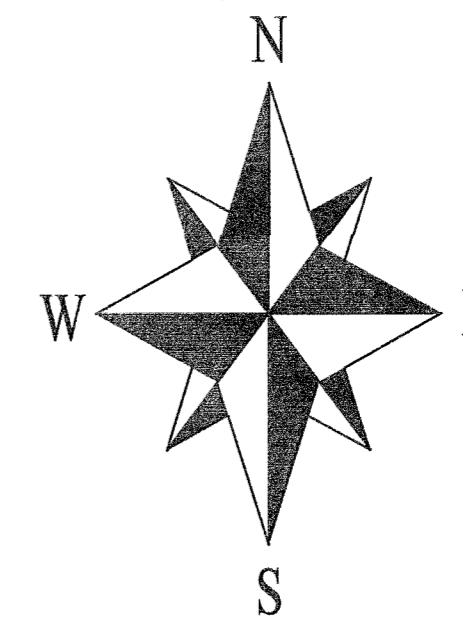


RECORD OF SURVEY FOR ERIC & CARLY GRIMES
 LOCATED IN THE N.E. 1/4 OF SECTION 36, TOWNSHIP 3 NORTH, RANGE 10 EAST W.M.
 LOT 20, BLOCK 37, HOOD RIVER PROPER,
 CITY OF HOOD RIVER, HOOD RIVER COUNTY, OREGON.
 TAX LOT 9801, 3N-10E-36BA

HOOD RIVER COUNTY
 SURVEYOR'S OFFICE
 Survey No: 2016 051
 Filed Date: 8/11/16
 By: BL



NARRATIVE:

THE PURPOSE OF THIS SURVEY IS TO VERIFY AND MONUMENT THE PROPERTY BOUNDARY OF TAX LOT 9801, BEING LOT 20, BLOCK 37, HOOD RIVER PROPER.

I HELD THE MONUMENT FOUND FROM C.S.#91063 AT THE SW CORNER OF LOT 20 AND THE MONUMENT FOUND AT THE SE CORNER OF LOT 23 FROM C.S.#7579 TO PROPORTION AND ESTABLISH THE SOUTH LINE OF LOT 20. I HELD THE MONUMENT FOUND AT THE NW CORNER OF LOT 7 AS PER C.S.#91063 AND ON THE NORTH LINE OF LOT 4 FROM C.S.#93056 TO PROPORTION THE LOT CORNERS FOR LOTS 4 TO 7 ALONG THE NORTH LINE OF THE BLOCK. I WAS THEN ABLE TO CALCULATE THE LOCATION OF THE REMAINING MISSING CORNERS FOR LOT 20. I ALSO HELD THE MONUMENT FOUND ON THE WEST LINE OF LOT 20 FROM C.S.#9106 AS IT FELL VERY CLOSE TO THE CALCULATED LINE.

BASIS OF BEARINGS:

STATE PLANE COORDINATES 3601 OREGON NORTH, N.A.D.83(2011) EPOCH 2010.00. THE RELATIONSHIP BETWEEN THE BEARINGS MEASURED BY THIS SURVEY AND THOSE OF C.S.#91063 IS ALSO SHOWN BETWEEN THE MONUMENTS FOUND AT THE NW AND SW CORNERS OF BLOCK 38 OF HOOD RIVER PROPER.

REGISTERED
 PROFESSIONAL
 LAND SURVEYOR

 OREGON
 JANUARY 15, 2002
 BRADLEY J. CROSS
 60051

RENEWS: 12/31/2017



SCALE 1 INCH = 30 FEET

SYMBOL LEGEND:

- SET 5/8" BY 30" IRON ROD WITH BLUE PLASTIC CAP STAMPED "CROSS PLS 60051"
- FOUND MONUMENT OF RECORD AS NOTED
- CALCULATED CORNER - NOT FOUND OR SET
- (50.00') DISTANCE FROM ORIGINAL PLAT OF HOOD RIVER PROPER
- (50.00') DISTANCE FROM C.S.#91063
- (50.00') DISTANCE FROM C.S.#93056

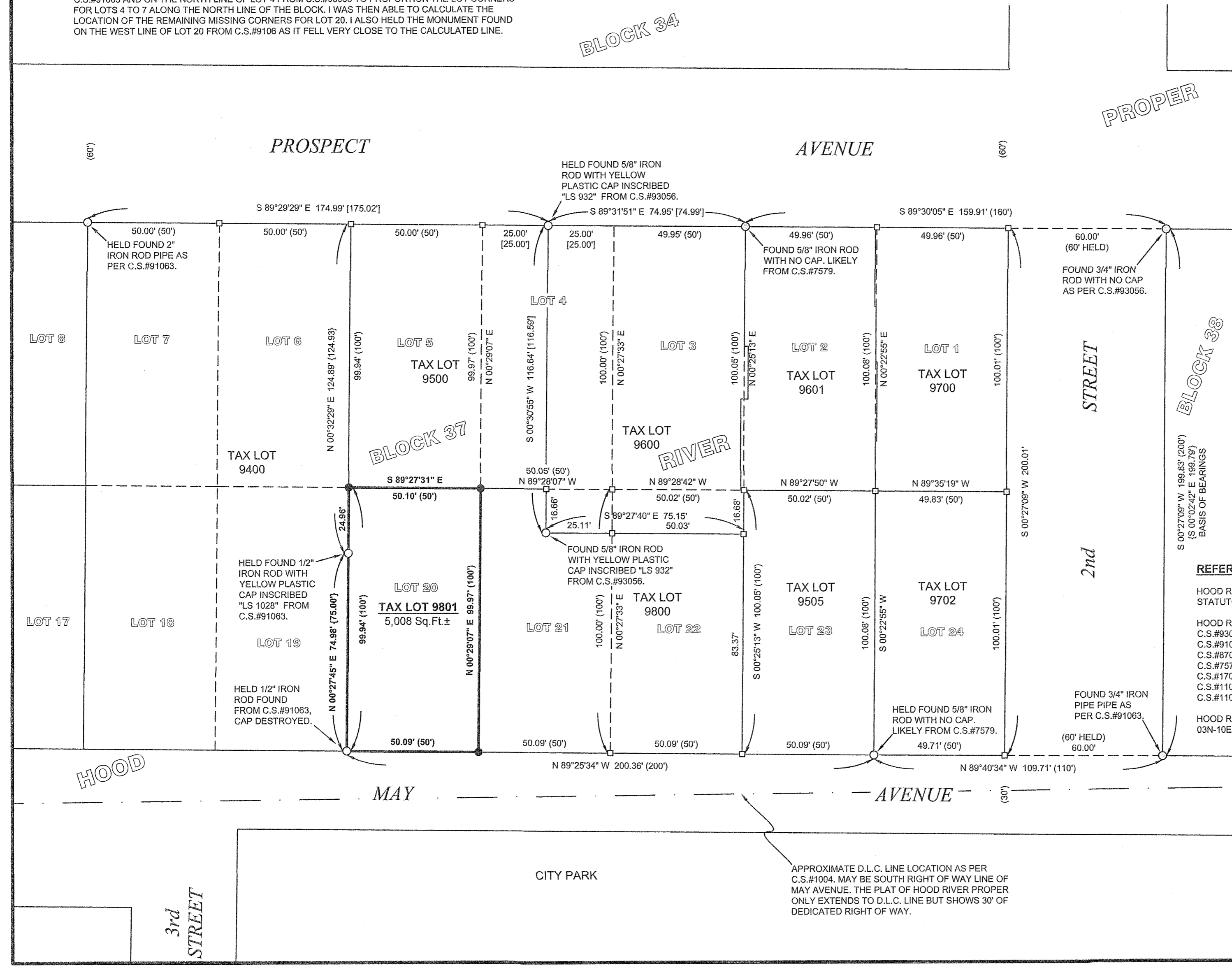
REFERENCES:

- HOOD RIVER COUNTY DEED DOCUMENTS:
 STATUTORY WARRANTY DEED, RECORDED SEPTEMBER 17, 2015, AS DOCUMENT No.2015-03246.
- HOOD RIVER COUNTY SURVEYORS OFFICE:
 C.S.#93056, SURVEY FOR JEFF & KATHY PALMER BY P.L.S. 932, FILED AUGUST 24, 1993.
 C.S.#91063, SURVEY FOR GARY HORNBECK BY P.L.S. 1028, FILED SEPTEMBER 20, 1991.
 C.S.#87037, SURVEY FOR HERSHNER & BELL REALTY BY P.L.S. 1028, FILED JULY 15, 1987.
 C.S.#7579, SURVEY FOR CRAIG RAFFELSON BY P.L.S. 60, FILED DECEMBER 8, 1975.
 C.S.#1703, HOOD RIVER PROPER SUBDIVISION PLAT BY JOSEPH WILSON, RECORDED APRIL 16, 1890.
 C.S.#1104, SURVEY OF PROPOSED NEIGHBORHOOD PARK BY P.L.S. 385, FILED AUGUST 28, 1969.
 C.S.#1104, SURVEY OF A.G.A. PROPERTY BY P.E. MART PERKINS, DATED DECEMBER 1, 1956.
- HOOD RIVER COUNTY ASSESSORS MAP:
 03N-10E-36BA, REVISED JANUARY 12, 2016.

PROJECT NUMBER: 2016007
 DATE OF DRAWING: JULY 10, 2016
 DATE OF MONUMENTATION: JULY 8, 2016
 HOOD RIVER COUNTY ASSESSORS MAP: 03N-10E-36BA

**COLUMBIA RIVER
 SURVEYING
 & MAPPING**

1767 12th St, #191
 HOOD RIVER, OREGON, 97031
 PHONE: 541-386-9002
 EMAIL: INFO@COLUMBIASURVEYING.COM



APPROXIMATE D.L.C. LINE LOCATION AS PER C.S.#1004. MAY BE SOUTH RIGHT OF WAY LINE OF MAY AVENUE. THE PLAT OF HOOD RIVER PROPER ONLY EXTENDS TO D.L.C. LINE BUT SHOWS 30' OF DEDICATED RIGHT OF WAY.

CS# 2016 051