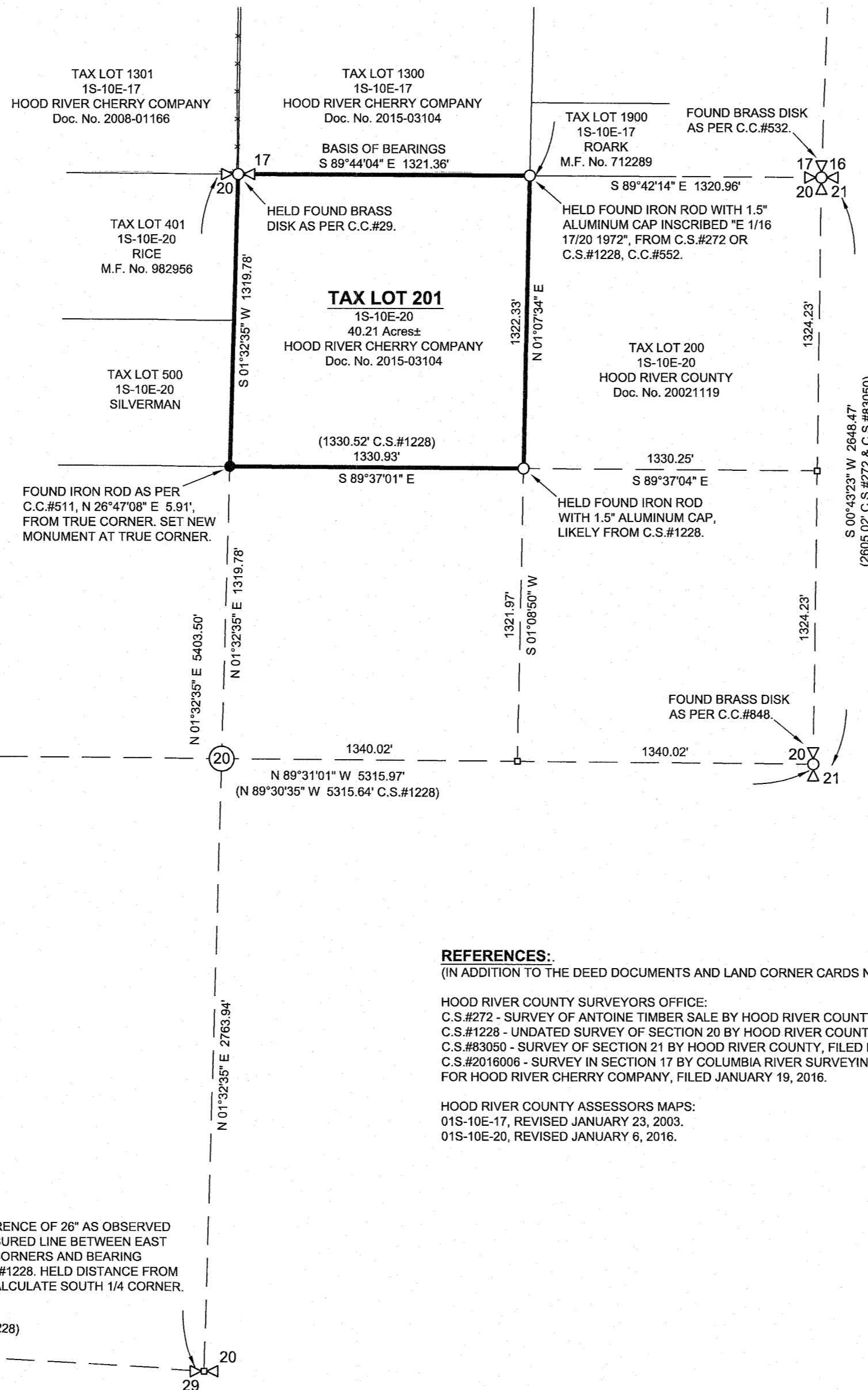
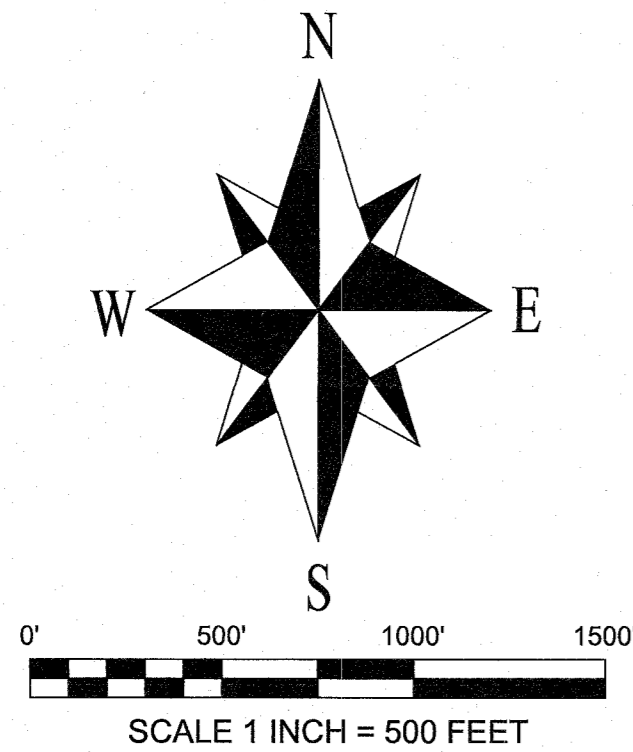


RECORD OF SURVEY FOR HOOD RIVER CHERRY COMPANY
 THE NW 1/4 OF THE NE 1/4 OF SECTION 20, TOWNSHIP 1 SOUTH, RANGE 10 EAST W.M.
 TAX LOT 201 1S-10E-20

HOOD RIVER COUNTY
 SURVEYOR'S OFFICE

Survey No: 2016 040
 Filed Date: 6/30/16
 By: BS.



NARRATIVE:

THE PURPOSE OF THIS SURVEY IS TO MONUMENT THE BOUNDARIES OF TAX LOT 201 DESCRIBED BY DEED DOCUMENT 2015-03104 AS BEING THE NW 1/4 OF THE NE 1/4 OF SECTION 20.

C.S.#272 DATED OCTOBER 1971 IS A SURVEY THAT SHOWS MONUMENTS AT ALL SECTION AND 1/4 CORNERS OF SECTION 20 AS WELL AS THE CENTER OF SECTION AND THE 1/16 CORNERS FOR THE NW 1/4 OF THE NE 1/4. THE C.S.#272 SURVEY HAS PENCILED IN DIMENSIONS AND NOTES WITH A MARCH 1975 DATE. THE PENCILED DIMENSIONS ARE CONSISTENT WITH A SURVEY FILED AS C.S.#1228 THAT HAS NO DATE. THE C.S.#1228 SURVEY IS VERY SIMILAR IN APPEARANCE TO THE C.S.#272 SURVEY AND BOTH WERE PREPARED BY THE HOOD RIVER COUNTY SURVEYORS OFFICE. THE C.S.#1228 SURVEY SHOWS DIMENSIONS THAT ARE SIGNIFICANTLY DIFFERENT TO THE C.S.#272 SURVEY. EVEN THOUGH I FOUND MONUMENTS AT ALL CORNERS OF MY SUBJECT TRACT I WAS NOT CONFIDENT IN THEIR POSITIONS DUE TO THE DIFFERENCES IN THESE SURVEYS SO I DECIDED TO BREAK DOWN THE SECTION TO VERIFY THE MONUMENT LOCATIONS.

I FOUND THE NE & SW SECTION CORNERS AND THE NORTH, EAST & WEST 1/4 CORNERS OF SECTION 20. A SEARCH FOR A MONUMENT AT THE CENTER OF THE SECTION WAS NOT SUCCESSFUL. MY PREVIOUS SURVEY OF THE PROPERTY TO THE NORTH HAD CONFIRMED THE LOCATION OF THE MONUMENT FOUND AT THE 1/16 CORNER BETWEEN THE NE SECTION CORNER AND THE NORTH 1/4 CORNER. THE LOCATION OF THE FOUND MONUMENTS ARE VERY CONSISTENT WITH THE C.S.#1228 SURVEY.

THE ONLY OTHER CORNER REQUIRED TO BREAK DOWN THE SECTION TO DETERMINE THE NW 1/4 OF THE NE 1/4 IS THE SOUTH 1/4 CORNER. THIS CORNER IS VERY DIFFICULT TO ACCESS AND AS I AM NOW CONFIDENT IN THE POSITIONS AS DETERMINED BY THE C.S.#1228 SURVEY I CALCULATED THE SOUTH 1/4 CORNER BASED ON THE C.S.#1228 POSITION.

I THEN DIVIDED THE SECTION TO DETERMINE THE NW 1/4 OF THE NE 1/4 AND DETERMINED THE IRON ROD FOUND AT THE 1/16 CORNER BETWEEN THE CENTER OF SECTION AND NORTH 1/4 CORNER TO BE MORE THAN 5 FEET OUT OF POSITION. AS THIS CORNER WAS LIKELY SET BY THE ERRONEOUS C.S.#272 SURVEY AND DOES NOT APPEAR TO HAVE BEEN RELIED UPON TO FIX THE BOUNDARIES, I SET A NEW MONUMENT AT THE TRUE CORNER. I THEN DETERMINED THAT THE MONUMENT FOUND AT THE 1/16 CORNER TO THE EAST WAS WITHIN HALF A FOOT OF THE CALCULATED POSITION. THIS MONUMENT MUST HAVE BEEN SET BY THE C.S.#1228 SURVEY AND WAS THEREFORE HELD.

IT SHOULD BE NOTED THAT A SURVEY OF SECTION 21 TO THE EAST FILED AS C.S.#83050 PERFORMED BY HOOD RIVER COUNTY IN 1983 SHOWS DIMENSIONS ALONG THE NW 1/4 COMMON WITH SECTION 20 THAT ARE EXACTLY THE SAME AS C.S.#272, RESULTING IN A DIFFERENCE OF OVER 40 FEET TO THAT MEASURED BY MYSELF AND C.S.#1228. THE C.S.#83050 SURVEY OF SECTION 21 SHOULD BE RELIED UPON WITH CAUTION.

BASIS OF BEARINGS:

STATE PLANE COORDINATES 3601 OREGON NORTH, N.A.D.83(2011) EPOCH 2010.00. BETWEEN THE NORTH 1/4 CORNER OF SECTION 20 AND THE NE CORNER OF THE NW 1/4 OF THE NE 1/4 OF SECTION 20 AS PER MY SURVEY FILED AS C.S.#2016006.

REFERENCES:

(IN ADDITION TO THE DEED DOCUMENTS AND LAND CORNER CARDS NOTED ON THE SURVEY)

HOOD RIVER COUNTY SURVEYORS OFFICE:
 C.S.#272 - SURVEY OF ANTOINE TIMBER SALE BY HOOD RIVER COUNTY, DATED OCTOBER 27, 1971.
 C.S.#1228 - UNDATED SURVEY OF SECTION 20 BY HOOD RIVER COUNTY.
 C.S.#83050 - SURVEY OF SECTION 21 BY HOOD RIVER COUNTY, FILED DECEMBER 16, 1983.
 C.S.#2016006 - SURVEY IN SECTION 17 BY COLUMBIA RIVER SURVEYING & MAPPING, P.L.S. 60051, FOR HOOD RIVER CHERRY COMPANY, FILED JANUARY 19, 2016.

HOOD RIVER COUNTY ASSESSORS MAPS:
 01S-10E-17, REVISED JANUARY 23, 2003.
 01S-10E-20, REVISED JANUARY 6, 2016.


SYMBOL LEGEND:

- SET 5/8" BY 30" IRON ROD WITH BLUE PLASTIC CAP INSCRIBED "CROSS PLS 60051" ON MAY 20, 2016
- FOUND MONUMENT AS NOTED
- CALCULATED CORNER - NOT FOUND OR SET
- C.C.# HOOD RIVER COUNTY PUBLIC LAND CORNER CARD
- FENCE

APPLIED DIFFERENCE OF 26" AS OBSERVED BETWEEN MEASURED LINE BETWEEN EAST AND WEST 1/4 CORNERS AND BEARING SHOWN ON C.S.#1228. HELD DISTANCE FROM C.S.#1228 TO CALCULATE SOUTH 1/4 CORNER.

FOUND 2" ALUMINUM DISK ON PIPE AS PER C.C.#77.

REGISTERED
 PROFESSIONAL
 LAND SURVEYOR



OREGON
 JANUARY 15, 2002
 BRADLEY J. CROSS
 60051

PROJECT NUMBER: 2016008
 DATE OF MAP: JUNE 21, 2016
 HOOD RIVER COUNTY ASSESSORS MAP: 01S-10E-20

**COLUMBIA RIVER
 SURVEYING
 & MAPPING**

1767 12th St, #191
 HOOD RIVER, OREGON, 97031
 PHONE: 541-386-9002
 EMAIL: INFO@COLUMBIASURVEYING.COM

RENEWS: 12/31/2017

C.S.# 2016 040