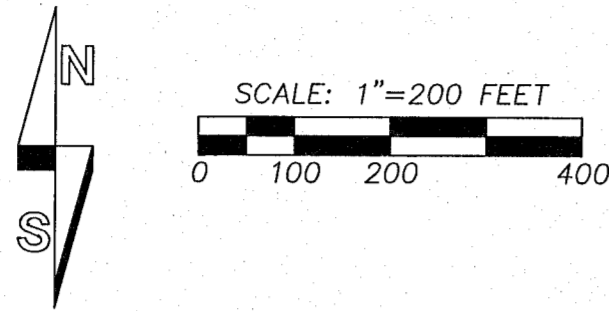


The East Half of the north line of Section 5 and the west and north lines of Government Lot 4 and a portion of the east line of Government Lot 3 in Section 7, all in Township 1 North, Range 9 East W.M. in Hood River County, Oregon.

(Sheet 1 of 3 Sheets)



Basis of bearings (Section 5): S89°55'02"W between the North One-Quarter and Northeast corner of Section 5-T1N-R9E, W.M. per Hood River County Survey Number CS-83078.

Basis of bearings (Section 7): N 85°56'42" E between the North One-Quarter corner and Northeast corner of Section 7-T1N-R9E, W.M. per Hood River County Survey Number CS-2014-036.

Legend:

- Found corner as noted
- Calculated position
- Set 3/4" galvanized iron pipe with cap LS 86894 "line only"
- GLO bearing or distance
- Private survey bearing or distance
- Property line blazed, painted and posted with 1/2" x 72" fiberglass rods
- Original Bearing Tree

North Quarter corner Section 5-T1N-R9E (SC) (found corner)

This survey found 2 1/2" aluminum pipe with 3" aluminum cap, 1.0' above ground, in cut bank on south edge of an old cat road, stamped as shown. Corner was as per reference survey # 5 and the following accessories:

- 10" fir with tag and visible scribe S04°W 4.80' to face
- 16" fir with tag and visible scribe S44°E 32.60' to 60d in center side.

Established accessories:

- 9" fir N40°W 19.36' to 60d in center side
- 10" fir N17°E 20.67' to 60d in center side

South Quarter corner Section 32-T2N-R9E (SC) (found corner)

This survey found the 2 1/2" aluminum pipe with 3" aluminum cap, 0.6' above ground, in centerline of an old cat road, stamped as shown as per reference survey # 5 with the following accessories:

- 5/8" rebar with yellow plastic cap LS 896 N36°W 13.00'
- 1 1/2" iron pipe, 1.0' above ground N68°E 14.50'
- 2 1/2" iron pipe with 2 1/2" unreadable brass cap in the roots of 30" fir tree S44°W 13.65'

Northeast corner Section 5-T1N-R9E (CC) (found corner)

This survey found the 2 1/2" iron pipe with 2 1/2" brass cap, 1.8' above ground, in a mound of stones, stamped as shown. As per reference survey # 5 and the following accessories:

- 13" fir snag, 6.0' tall with tag and visible scribe S32°E 5.45' to face
- 14" fir blow down with tag S54°W 10.00', not usable.
- 12" fir blow down with tag South 24.00', not usable.
- 5' tall Forest Service carsonite post West 3.0'

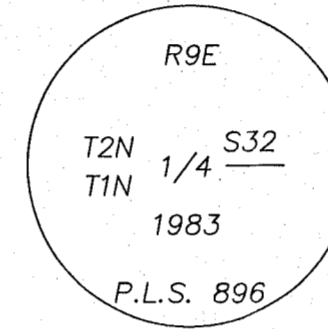
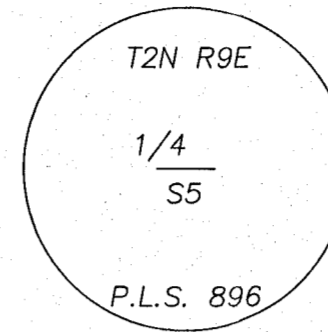
Established accessories:

- 5" fir S25°W 17.18' to 60d spike in center side
- 7" hemlock N23°W 8.14' to 60d spike in center side
- 7" fir N89°E 4.77' to 60d spike in center side

Southeast corner Section 32-T2N-R9E (SC) (found corner)

This survey found the 2 1/2" iron pipe with 2 1/2" brass cap, 1.5' above ground, in a mound of stones, stamped as shown as per reference survey # 5 and the following accessories:

- 25" hemlock with tag and healed scribe S08°W to 60d spike in center side.
- 17" fir snag, 25' tall with tag and visible scribe N30°W 47.60' to face.

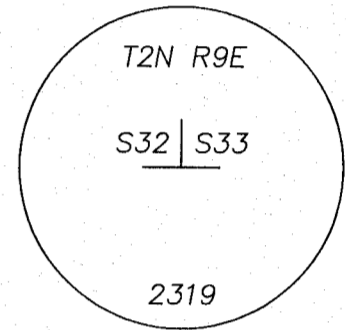
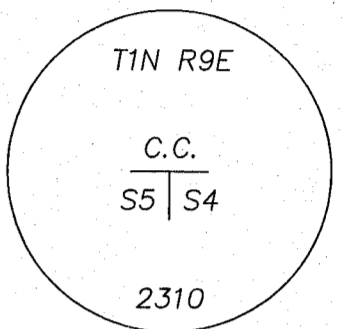


HOOD RIVER COUNTY SURVEYOR'S OFFICE

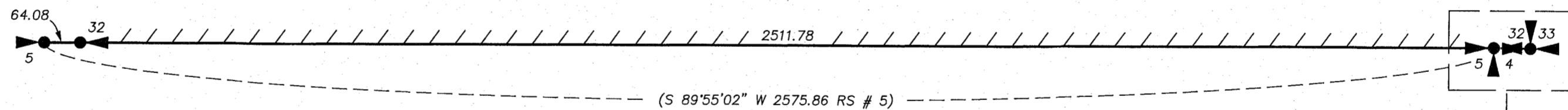
CS# 2016 001

Date filed: 1/7/16

By: BC



STATE OF OREGON



Reference surveys:

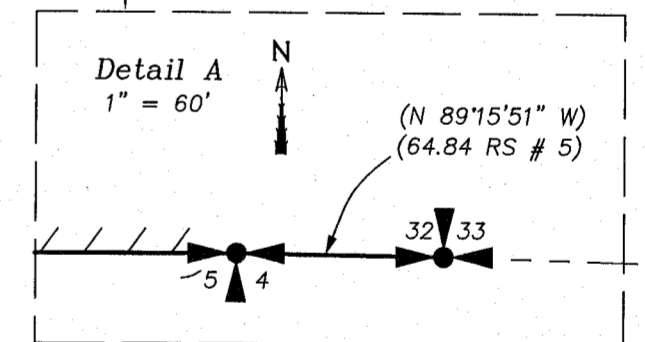
- 1) GLO survey of T2N-R9E by L.H. Wheeler under contract No. 482 (1883)
- 2) GLO survey of T1N-R9E by N. Clark under Contract No. 502 (1884)
- 3) Hood River County survey # CS-1242 (1970)
- 4) L.D. Bishop, PLS 896, CS-80091 (1980)
- 5) L.D. Bishop, PLS 896, CS-83078 (1983)
- 6) R.O. Gaylord, PLS 1815, CS-95105 (1995)
- 7) G. Ford, PLS 2210, CS-2013049 (2013)
- 8) G. Ford, PLS 2210, CS-2014036 (2014)

Sheet index:

- Sheet 1: Survey basis, references, legend, corner notes, descriptions and narrative
- Sheet 2: Survey of Section 7, corner notes and descriptions
- Sheet 3: Corner notes and descriptions

Client: Weyerhaeuser Columbia Timberlands, LLC
Date of monumentation: June 12, 2015
Assessor's Map: 1N-9E

WEYERHAEUSER
COLUMBIA TIMBERLANDS
(Statutory Bargain and Sale Deed)
(Recording instrument # 2007-02460)



Narrative:

The purpose of this survey was to recover, establish or reestablish the applicable PLSS corners and mark the north and west lines of Government Lot 4 and a portion of the east line of Government Lot 3 and the north line of the Northeast Quarter of Section 5, all in Township 1 North, Range 9 East, W.M. in Hood River County, Oregon for timber harvest.

Control for the survey was established using Topcon Hiper-RTK GPS receivers and a series of closed loop field traverses using a Topcon GTS-220 (00°00'05") total station. This survey recovered, confirmed to the applicable records and accepted each of the corners depicted as "found corner as noted". Corners depicted as calculated were computed either from surveys of record or using the applicable procedures for restoration of lost corners as defined in the BLM manual.

Using the calculation methods depicted on page 2 and the evidence detailed on pages 1 through 3, this survey established and set a witness corner to the northeast corner of Government Lot 4 of Section 7-T1N-R9E. The corner was monumented with a 3/4" galvanized iron pipe with yellow plastic cap LS 86894. See sheets 1 and 3 for corner histories, evidence found and new accessories established.

This survey recovered and confirmed the North One-Quarter corner and Northeast corner of Section 5-T1N-R9E and the South One-Quarter corner and Southeast corner of Section 32-T2N-R9E as depicted on reference survey # 5. This survey also found that there were sufficient posts and blazes remaining from the 1980 Bishop survey to re-mark the East Half of the north line of Section 5 without the benefit of new field traverses. This accounts for only the record measurement being depicted on this survey.

The surveyed property lines were flagged, blazed, painted and posted with 1/2" x 72" fiberglass rods. The typical accessory bearing tree established by this survey has a scribed face, a 40d or 60d spike in center side and an aluminum tag at head height facing the corner.

BUTLER SURVEYING INC.

475 NW CHEHALIS AVENUE
P.O. BOX 149, CHEHALIS, WA 98532
360/748-8803

REGISTERED
PROFESSIONAL
LAND SURVEYOR

Signature

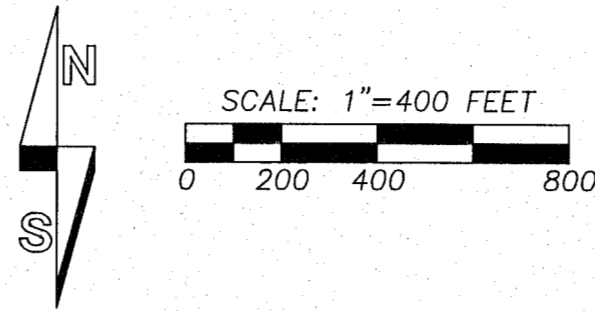
OREGON
NOVEMBER 13, 2012
CHRISTOPHER MICHAEL
BUTLER
86894PLS

EXPIRES: 12-31-15

Drawn	S. Spiro	Date	12-1-15
Checked	CS	Job No.	15-207
Scale	1" = 200'	Sheet	1 of 3

The East Half of the north line of Section 5 and the west and north lines of Government Lot 4 and a portion of the east line of Government Lot 3 in Section 7, all in Township 1 North, Range 9 East W.M. in Hood River County, Oregon.

(Sheet 2 of 3 Sheets)

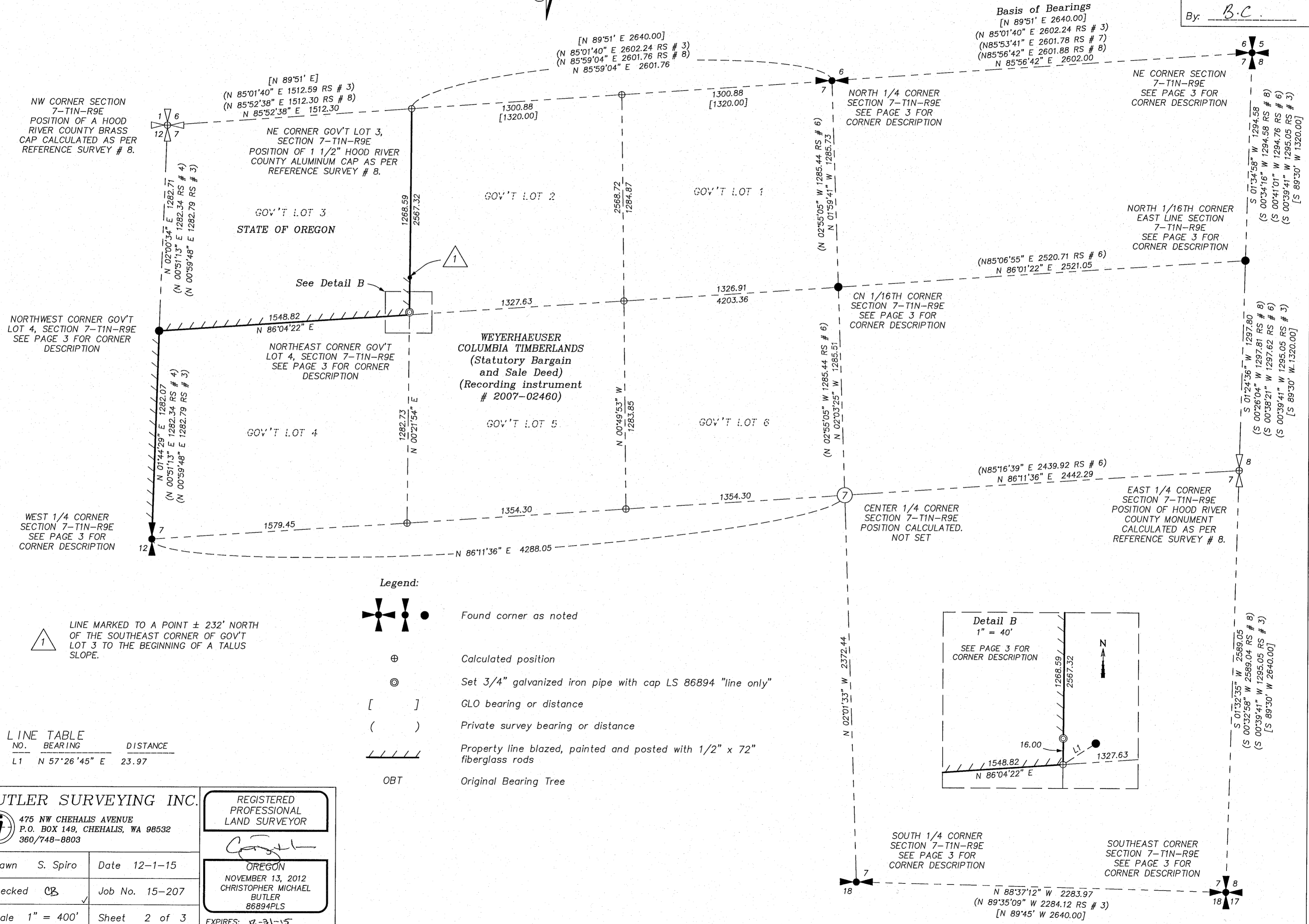


HOOD RIVER COUNTY SURVEYOR'S OFFICE

CS# 2016 001

Date filed: 1/7/16

By: B.C.



Basis of Bearings
 [N 89°51' E 2640.00]
 (N 85°01'40" E 2602.24 RS # 3)
 (N85°53'41" E 2601.78 RS # 7)
 (N85°56'42" E 2601.88 RS # 8)
 N 85°56'42" E 2602.00

NW CORNER SECTION 7-T1N-R9E
 POSITION OF A HOOD RIVER COUNTY BRASS CAP CALCULATED AS PER REFERENCE SURVEY # 8.

NE CORNER GOV'T LOT 3, SECTION 7-T1N-R9E
 POSITION OF 1 1/2" HOOD RIVER COUNTY ALUMINUM CAP AS PER REFERENCE SURVEY # 8.

NORTH 1/4 CORNER SECTION 7-T1N-R9E
 SEE PAGE 3 FOR CORNER DESCRIPTION

NE CORNER SECTION 7-T1N-R9E
 SEE PAGE 3 FOR CORNER DESCRIPTION

NORTH 1/16TH CORNER EAST LINE SECTION 7-T1N-R9E
 SEE PAGE 3 FOR CORNER DESCRIPTION

NORTHWEST CORNER GOV'T LOT 4, SECTION 7-T1N-R9E
 SEE PAGE 3 FOR CORNER DESCRIPTION

NORTHEAST CORNER GOV'T LOT 4, SECTION 7-T1N-R9E
 SEE PAGE 3 FOR CORNER DESCRIPTION

CN 1/16TH CORNER SECTION 7-T1N-R9E
 SEE PAGE 3 FOR CORNER DESCRIPTION

WEYERHAEUSER COLUMBIA TIMBERLANDS (Statutory Bargain and Sale Deed) (Recording instrument # 2007-02460)

(N85°06'55" E 2520.71 RS # 6)
 N 86°01'22" E 2521.05

WEST 1/4 CORNER SECTION 7-T1N-R9E
 SEE PAGE 3 FOR CORNER DESCRIPTION

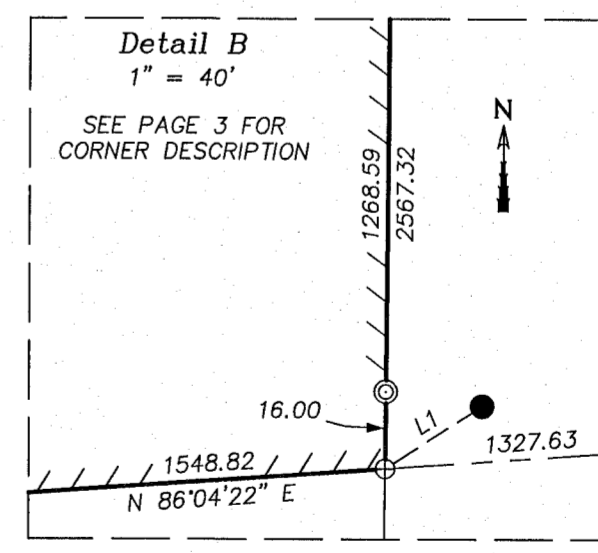
CENTER 1/4 CORNER SECTION 7-T1N-R9E
 POSITION CALCULATED. NOT SET

EAST 1/4 CORNER SECTION 7-T1N-R9E
 POSITION OF HOOD RIVER COUNTY MONUMENT CALCULATED AS PER REFERENCE SURVEY # 8.

- Legend:**
- Found corner as noted
 - Calculated position
 - Set 3/4" galvanized iron pipe with cap LS 86894 "line only"
 - GLO bearing or distance
 - Private survey bearing or distance
 - Property line blazed, painted and posted with 1/2" x 72" fiberglass rods
 - Original Bearing Tree

LINE TABLE

NO.	BEARING	DISTANCE
L1	N 57°26'45" E	23.97



BUTLER SURVEYING INC.
 475 NW CHEHALIS AVENUE
 P.O. BOX 149, CHEHALIS, WA 98532
 360/748-8803

REGISTERED PROFESSIONAL LAND SURVEYOR

OREGON
 NOVEMBER 13, 2012
 CHRISTOPHER MICHAEL BUTLER
 86894PLS
 EXPIRES: 12-31-15

Drawn	S. Spiro	Date	12-1-15
Checked	CB	Job No.	15-207
Scale	1" = 400'	Sheet	2 of 3

The East Half of the north line of Section 5 and the west and north lines of Government Lot 4 and a portion of the east line of Government Lot 3 in Section 7, all in Township 1 North, Range 9 East W.M. in Hood River County, Oregon.

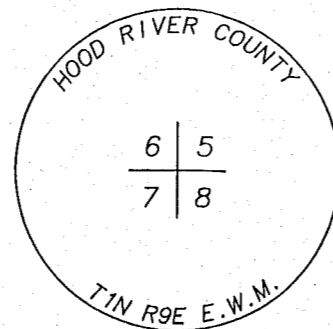
(Sheet 3 of 3 Sheets)

Northeast corner Section 7-T1N-R9E (found corner)

Found evidence (2015)

This survey found a 2 1/2" iron pipe with 3 1/4" brass cap, 1.0' above ground, stamped as shown. Corner was established on reference survey # 3 and recovered on reference surveys # 7 and 8 with the following accessories:

- 19" fir N68°E 3.34' to 60d spike in center side (Ford)
- 11" fir stump, 5.0' tall S48°W 14.63' to 60d spike in center side (Ford)
- "T" post with tag South 70.50'



North 1/6th corner east line Section 7-T1N-R9E (found corner)

Found evidence (2015)

This survey found a 5/8" rebar with 1 1/2" blank aluminum cap, 0.4' above ground as per reference survey # 8 and the following accessories:

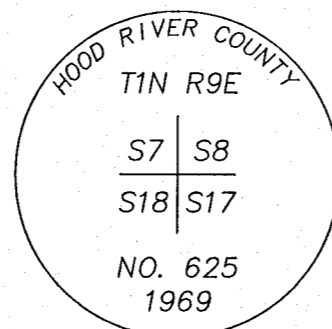
- 18" fir with tag S54°W 1.74' to 60d spike in center side
- 11" fir with tag N48°E 6.86' to 60d spike in center side

Southeast corner Section 7-T1N-R9E (found corner)

Found evidence (2015)

This survey found a 2 1/2" iron pipe with 3 1/4" brass cap, 1.0' above ground in a mound of stones, stamped as shown. Corner was established on reference survey # 3 and recovered on reference survey # 8 with the following accessories:

- 23" fir with visible scribe S39°W 45.93' to 60d spike in center side
- 15" hemlock with visible scribe N86°W 14.82' to 60d spike in center side
- 14" dead fir with tag N27°W 18.11'
- 12" fir blow over with visible scribe N42°W 24.75'
- 4" x 4" cedar post, 5.0' tall with scribe North 3.5' in a mound of stones



South Quarter corner Section 7-T1N-R9E (found corner)

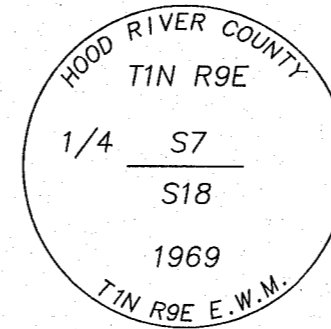
Found evidence (2015)

This survey found a 2 1/2" iron pipe with 3 1/4" brass cap in concrete, ± 30' South of creek, stamped as shown. Corner was established on reference survey # 6 with the following accessory:

- 23" cedar snag, 20' tall with scribe S39°E 6.78' to nail in face

Established accessories:

- 22" cedar N18°E 24.85' to 60d spike in center side
- 18" cedar S26°W 21.85' to 60d spike in center side
- 14" cedar S81°W 21.53' to 60d spike in center side
- carsonite post North 1.0'

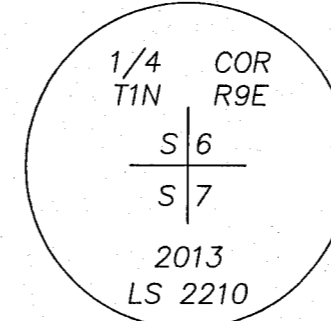


North Quarter corner Section 7-T1N-R9E (found corner)

Found evidence (2015)

This survey found a 3/4" iron rod with 2" aluminum cap, 1.0' above ground in a mound of stones at the single proportion position, stamped as shown. Corner was established on reference survey # 7 and recovered on reference survey # 8 with the following accessories:

- 15" fir with tag and visible scribe N60°E 19.45' to 20d spike in center face
- 8" fir with tag and visible scribe S65°E 22.20' to 20d spike in center face
- 10" fir with tag and visible scribe West 15.50'
- "T" post North 2.0'

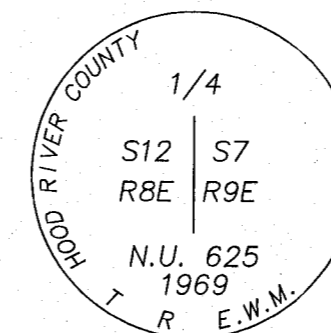


West Quarter corner Section 7-T1N-R9E (found corner)

Found evidence (2015)

This survey found a 2 1/2" iron pipe with 3 1/4" brass cap, 1.0' above ground, stamped as shown. Corner was established on reference survey # 3 and recovered on reference survey # 4 with the following accessories:

- remains of hemlock stump S10°E 2.5' (OBT)
- remains of fir stump N32°W 5.0' (OBT)
- 9" fir with tag and scribe N42°E 42.60' to 40d spike center side
- 24" fir stump with tag N58°E 35.5' to face
- 11" fir with tag and scribe S62°E 20.33' to 40d spike in center side
- 36" fir stump with tag South 68.08' to 1/2" rebar in top of stump
- 24" fir stump with tag N82°W 61.09' to 1/2" rebar and cap LS 733 in top of stump

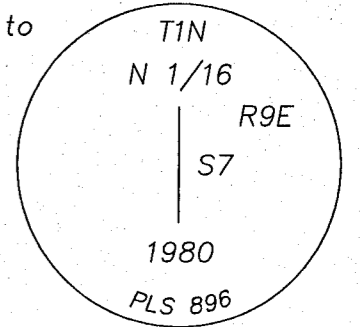


North 1/6th corner west line (NW corner Government Lot 4) Section 7-T1N-R9E (found corner)

Found evidence (2015)

This survey found a 2 1/2" x 30" galvanized steel pipe with 2 1/2" brass cap, stamped as shown. Corner was established on reference survey # 4 with the following accessories:

- 17" fir with tag and healed scribe N24°E 86.88' to 60d spike in center side
- 10" dead fir with tag and visible scribe S37°W 12.85' to 60d spike in center side
- 22" fir snag with tag and healed scribe S28°E 27.80'
- 2 1/2" brass cap epoxyed to a large rock N79°46'49"W 3.59'

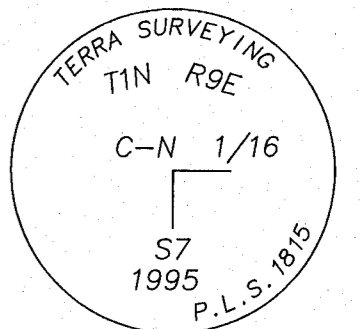


CN 1/16th corner (NE corner Government Lot 6) Section 7-T1N-R9E (found corner)

Found evidence (2015)

This survey found a 1" X 30" galvanized pipe with 2 1/2" brass cap, 1.0' above ground, stamped as shown. Corner was established on reference survey # 6 with the following accessories:

- 14" fir with tag and healed scribe S84°E 15.84' to 60d spike in center side (Gaylord)
- 12" fir with tag and healed scribe N05°E 5.40' to 60d spike in center side (Gaylord)
- "T" post North 1.0' with tag (Gaylord)



NE corner Government Lot 4 Section 7-T1N-R9E (found corner)

This survey found 5/8" rebar and blank aluminum cap, 0.5' above ground bearing N57°26'45"E 23.97' from the position calculated with the following accessory:

- 17" fir with tag and visible scribe N57°W 19.09' to 60d spike in center side

The calculated position of the Northeast corner of Government Lot 4 is ± 15' North of a spur road on top of a cut bank. Set a witness corner 16.00' North of the position calculated and the following accessories:

- 18" fir N02°W 4.60' to 60d spike in center side
- 10" fir N65°E 14.84' to 60d spike in center side

BUTLER SURVEYING INC.

475 NW CHEHALIS AVENUE
P.O. BOX 149, CHEHALIS, WA 98532
360/748-8803

Drawn	S. Spiro	Date	12-1-15
Checked	CB	Job No.	15-207
Scale	none	Sheet	3 of 3

REGISTERED PROFESSIONAL LAND SURVEYOR

OREGON
NOVEMBER 13, 2012
CHRISTOPHER MICHAEL BUTLER
86894PLS

EXPIRES: 12-31-15