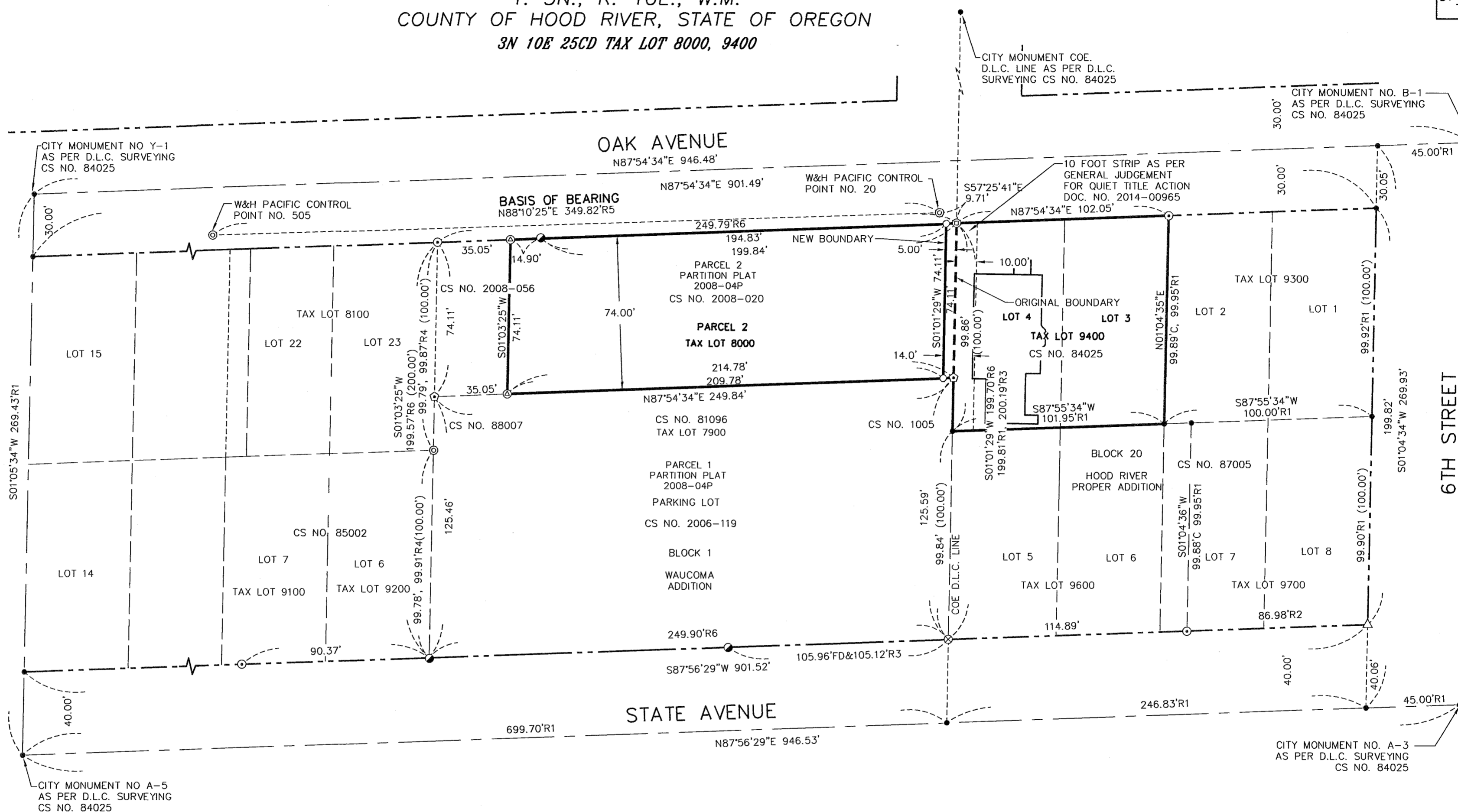


BOUNDARY LINE ADJUSTMENT

PARCEL 2 OF PARTITION PLAT 2008-04P AND A
PORTION OF LOT 4, BLOCK 20 OF HOOD RIVER PROPER
LOCATED IN SE 1/4, SW 1/4 OF SECTION 25,
T. 3N., R. 10E., W.M.
COUNTY OF HOOD RIVER, STATE OF OREGON
3N 10E 25CD TAX LOT 8000, 9400



NARRATIVE

THE PURPOSE OF THIS SURVEY IS TO ADJUST THE EAST 5.00 FEET OF PARCEL 2 OF PARTITION PLAT 2008-04P, FILED AS COUNTY SURVEY NO. 2008-020 WITH THAT PORTION OF TAX LOT 9400 OF HOOD RIVER COUNTY ASSESSOR MAP 3N 10E 25CD.

TWO PREVIOUS SURVEYS PERFORMED BY OUR FIRM ON TAX LOT 8000, FIRST BEING A PARTITION RECORDED AS PARTITION PLAT 2008-04P, THE SECOND BEING A BOUNDARY LINE ADJUSTMENT, FILED AS COUNTY SURVEY NO. 2008-056. THE EXTERIOR MONUMENTS OF SAID PARCEL 2 WERE FIELD VERIFIED AND HELD FOR POSITION. ALL OTHER MONUMENTS SHOWN WERE LOCATED IN A PREVIOUS SURVEY PERFORMED BY OUR FIRM AND FILED AS COUNTY SURVEY NO. 2006-119.

REFERENCED DEEDS

WARRANTY DEED RECORDED IN MICRO FILM NO. 2008 02826,
DATED 7/15/2008 HOOD RIVER COUNTY DEED RECORDS.

REFERENCED SURVEYS

1. W&H PACIFIC CS NO. 2002-003
2. D.L.C. CS NO. 77098
3. D.L.C. CS NO. 87005
4. D.L.C. CS NO. 84025
5. BISHOP SURVEYING CS NO. 88007
6. BISHOP SURVEYING CS NO. 81096
7. DIELSCHNEIDER ASSOCIATES CS NO. 1005
8. KLEIN & ASSOCIATES CS NO. 85002
9. KLEIN & ASSOCIATES CS NO. 2006-119
10. KLEIN & ASSOCIATES CS NO. 2008-020
11. KLEIN & ASSOCIATES CS NO. 2008-056

SURVEY PERFORMED FOR:
STEVE GATES
DATE OF MONUMENTATION: JANUARY 7, 2015
PROJECT: 14-01-03 DRAFT: GJD
FILE: 140103.DWG LAYOUT TAB: OR SURVEY

OWNER
BLUE HERON BUILDERS, LLC
&
FRITZ & JO KUYKENDALL

KLEIN & ASSOCIATES, MAKES NO WARRANTY AS TO MATTERS OF
UNWRITTEN TITLE, ADVERSE POSSESSION, ESTOPPEL, ACQUIESCENCE.

AREA NOTE:

PARCEL	ORIGINAL AREA	NEW AREA
PARCEL 2 TAX LOT 8000	15,892 SQ. FT.	15,521 SQ. FT.
TAX LOT 9400	10,543 SQ. FT.	10,914 SQ. FT.



BASIS OF BEARINGS

RECORD OF SURVEY CS NO. 2008-056

LEGEND

- SET 5/8" X 30" REBAR W/ YELLOW PLASTIC CAP STAMPED KLEIN & ASSOC. OR 59002
- ⊙ FOUND 5/8" W/ YELLOW PLASTIC CAP KLEIN & ASSOCIATES OR 59002, CS NO. 2006-119
- ⊙ FOUND REBAR ROD (VISITED 2006)
- ⊙ FOUND W&H PACIFIC CONTROL REBAR AS PER CS NO. 2002003, (VISITED 2006)
- FOUND 1/2" IRON PIPE, (VISITED 2006)
- △ FOUND 1/2" REBAR PER, CS NO. 84025 (VISITED 2006)
- ⊗ FOUND 3" SURVEY MARKER WITH BRASS WASHER MARKED KLEIN & ASSOCIATES OR 59002 (VISITED 2006)
- ⊙ FOUND 5/8" REBAR, PER KLEIN & ASSOCIATES INC, CS NO. 2008-020
- ⊙ FOUND 5/8" REBAR, PER KLEIN & ASSOCIATES CS NO. 2008-056
- ANGLE POINT, NOT MONUMENTED
- (50.00') PLAT DISTANCE
- CS NO. COUNTY SURVEY NUMBER
- R1 D.L.C. SURVEYING, CS NO. 84025
- R2 D.L.C. SURVEYING, CS NO. 87005
- R3 DIELSCHNEIDER SURVEYING, CS NO. 1005
- R4 BISHOP SURVEYING, CS NO. 88007
- R5 W&H PACIFIC, CS NO. 2002-003
- R6 KLEIN & ASSOCIATES INC, CS NO. 2006-119

REGISTERED
PROFESSIONAL
LAND SURVEYOR

James M. Klein
OREGON
JULY 12, 2005
JAMES M. KLEIN
59002

Expires 6-30-2015

KA
Klein & Associates, Inc.
ENGINEERING • SURVEYING • PLANNING
1411 13th Street • Hood River, OR 97031
TEL: 541-386-3322 • FAX: 541-386-2515

SHEET 1 OF 1
WILLAMETTE MERIDIAN
HOOD RIVER COUNTY, OREGON

1/4 SEC T. R.
25CD 3N. 10E.