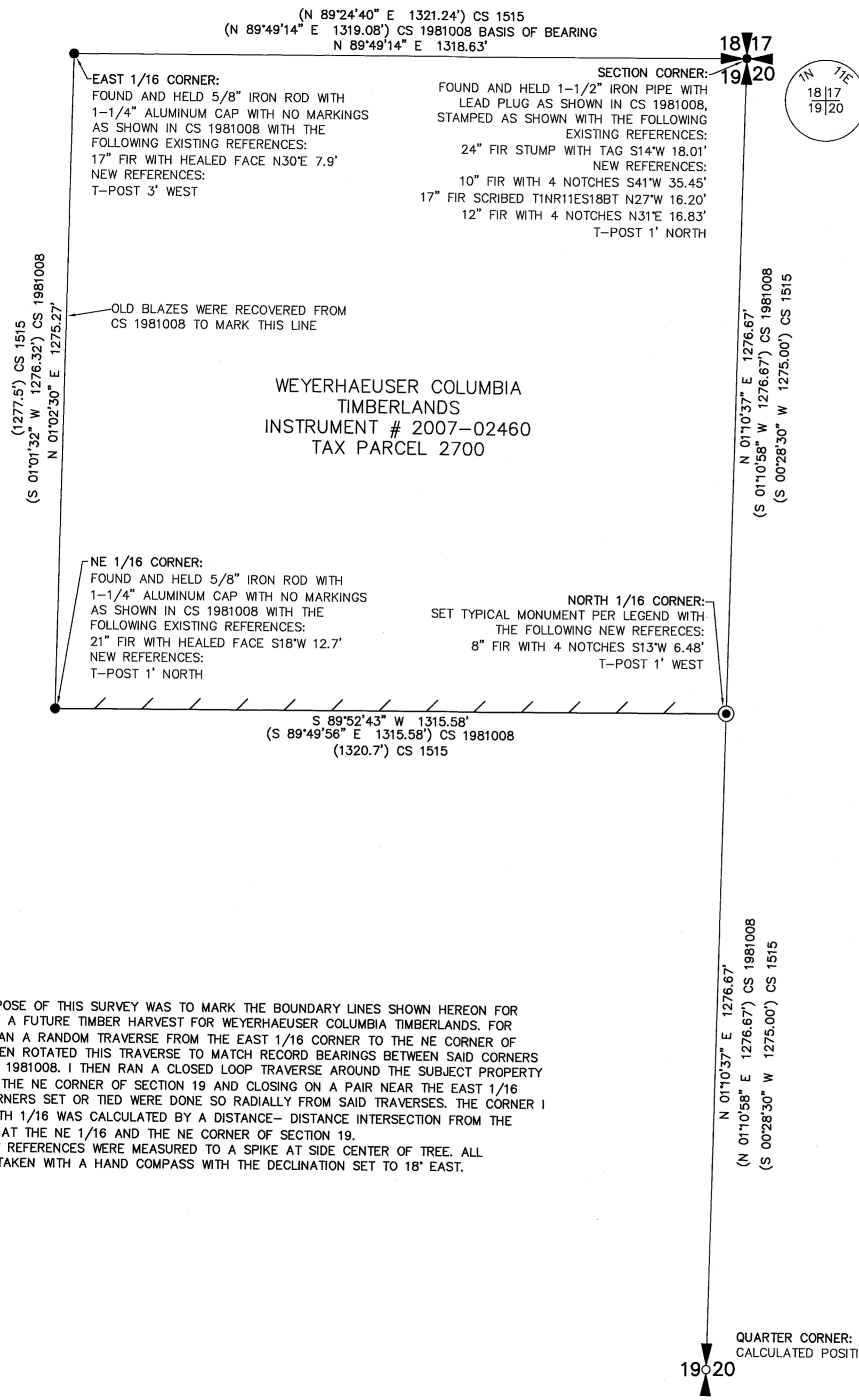
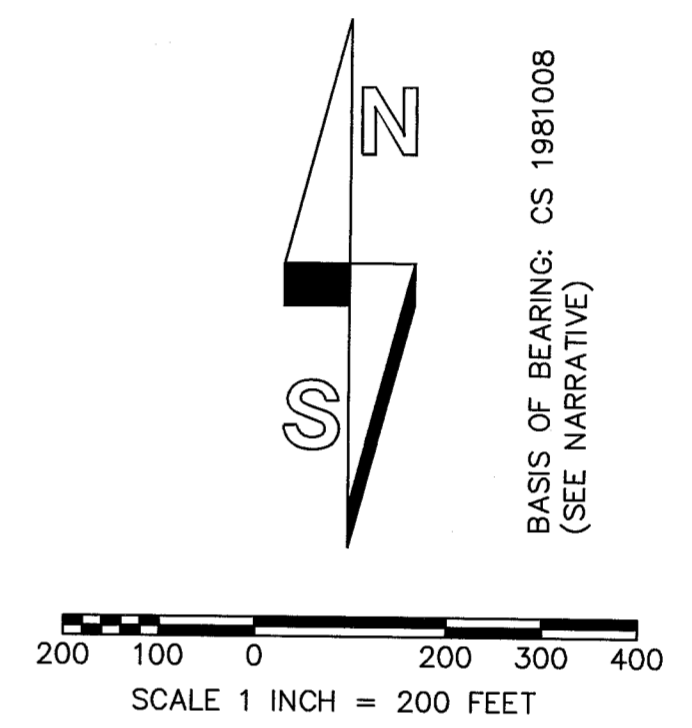


HOOD RIVER COUNTY SURVEYOR
 CS NUMBER: 2014 047
 DATE FILED: 12-4-14
 BY: RJ

RECORD OF SURVEY
 IN A PORTION OF THE
 NE 1/4 OF SECTION 19
 T1N, R11E, W.M.,
 HOOD RIVER COUNTY, OREGON
 DATE: 10-28-14



WEYERHAEUSER COLUMBIA
 TIMBERLANDS
 INSTRUMENT # 2007-02460
 TAX PARCEL 2700



- LEGEND:
- INDICATES MONUMENT FOUND AS NOTED
 - ⊙ INDICATES 5/8" x 36" IRON REBAR WITH YELLOW PLASTIC CAP INSCRIBED "BROWN 87015LS" SET 10-14-14
 - () INDICATES RECORD INFORMATION PER SURVEY REFERENCE NUMBER
 - / — / — INDICATES LINE MARKED WITH 1/2" x 72" FIBER GLASS RODS WITH RED AND WHITE RIBBON. TREES ALONG LINE PAINTED WITH BLUE PAINT.
 - INDICATES CALCULATED POSITION

NARRATIVE:
 THE PURPOSE OF THIS SURVEY WAS TO MARK THE BOUNDARY LINES SHOWN HEREON FOR THE PURPOSE OF A FUTURE TIMBER HARVEST FOR WEYERHAEUSER COLUMBIA TIMBERLANDS. FOR THIS SURVEY I RAN A RANDOM TRAVERSE FROM THE EAST 1/16 CORNER TO THE NE CORNER OF SECTION 19. I THEN ROTATED THIS TRAVERSE TO MATCH RECORD BEARINGS BETWEEN SAID CORNERS AS SHOWN IN CS 1981008. I THEN RAN A CLOSED LOOP TRAVERSE AROUND THE SUBJECT PROPERTY BEGINNING NEAR THE NE CORNER OF SECTION 19 AND CLOSING ON A PAIR NEAR THE EAST 1/16 CORNER. ALL CORNERS SET OR TIED WERE DONE SO RADIALLY FROM SAID TRAVERSES. THE CORNER I SET AT THE NORTH 1/16 WAS CALCULATED BY A DISTANCE-DISTANCE INTERSECTION FROM THE FOUND CORNERS AT THE NE 1/16 AND THE NE CORNER OF SECTION 19.
 ALL NEW REFERENCES WERE MEASURED TO A SPIKE AT SIDE CENTER OF TREE. ALL BEARINGS WERE TAKEN WITH A HAND COMPASS WITH THE DECLINATION SET TO 18' EAST.

REGISTERED
 PROFESSIONAL
 LAND SURVEYOR
Ed Brown
 OREGON
 NOVEMBER 13, 2012
 EDWARD V. BROWN
 87015PLS
 Renews 12-31-2015
 11-24-2014

SCALE: 1"=200'
 JOB NO. 1N11E19
 DATE: 10-28-14
 CALC BY: EVB
 DRAWN BY: EVB
 CHECKED BY: RLJ
 SHEET 1 OF 1

**WEYERHAEUSER COLUMBIA
 TIMBERLANDS**

 PO BOX 667
 LONGVIEW, WA 98632
 360-442-4311