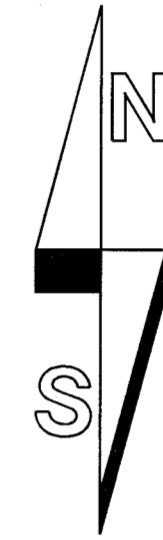


HOOD RIVER COUNTY SURVEYOR
 CS NUMBER: 2014 028
 DATE FILED: 8-5-14
 BY: RJ

RECORD OF SURVEY
 IN A PORTION OF THE
 SW 1/4 OF SECTION 26
 T2N, R9E, W.M.,
 HOOD RIVER COUNTY, OREGON
 DATE: 7-8-14



200 100 0 200 300 400
 SCALE 1 INCH = 200 FEET

LEGEND:

- INDICATES MONUMENT FOUND AS NOTED
- ⊙ INDICATES 5/8" x 36" IRON REBAR WITH YELLOW PLASTIC CAP INSCRIBED "BROWN 87015LS" SET 5-15-14
- () INDICATES RECORD INFORMATION PER SURVEY REFERENCE NUMBER
- / — INDICATES LINE MARKED WITH 1/2" x 72" FIBER GLASS RODS WITH RED AND WHITE RIBBON. TREES ALONG LINE BLAZED AND PAINTED WITH BLUE PAINT.

SURVEY REFERENCE:
 1) CS 97055
 2) CS 2002 065

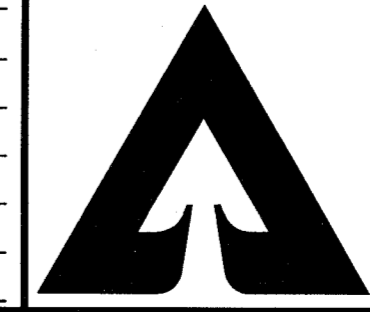
REGISTERED
 PROFESSIONAL
 LAND SURVEYOR

Edward V. Brown
 OREGON
 NOVEMBER 13, 2012
 EDWARD V. BROWN
 87015PLS

Renews 12-31-2015

7-8-2014

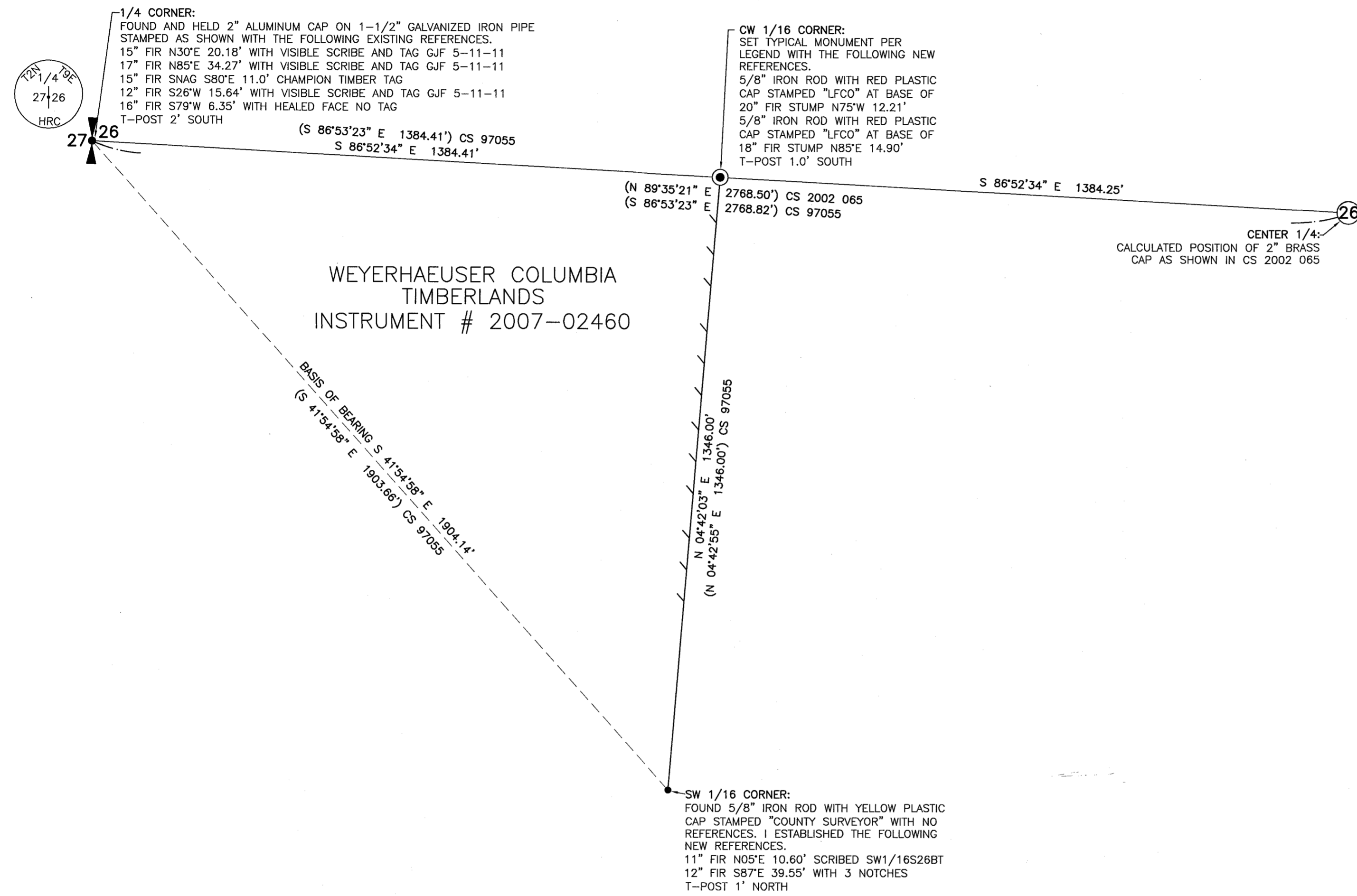
SCALE: 1"=200'
 JOB NO. 2N9E26
 DATE: 7-8-14
 CALC BY: EVB
 DRAWN BY: EVB
 CHECKED BY: RLJ
 SHEET 1 OF 1



WEYERHAEUSER COLUMBIA
 TIMBERLANDS
 PO BOX 667
 LONGVIEW, WA 98632
 360-442-4311

CS 2014 028

RECEIVED JUL 10 2014



WEYERHAEUSER COLUMBIA
 TIMBERLANDS
 INSTRUMENT # 2007-02460

NARRATIVE:

THE PURPOSE OF THIS SURVEY WAS TO MARK THE LINES SHOWN HEREON FOR FUTURE TIMBER HARVEST BY WEYERHAEUSER COLUMBIA TIMBERLANDS. FOR THIS SURVEY I UTILIZED EXISTING CORNERS THAT WERE ESTABLISHED OR FOUND IN CS 97055 FOR CONTROL. THE C-W 1/16 CORNER WAS MOST LIKELY DESTROYED DURING PREVIOUS LOGGING OPERATIONS. I RESET THE C-W 1/16 CORNER BY A DISTANCE-DISTANCE INTERSECTION USING RECORD INFORMATION FROM CS 97055. THIS SOLUTION MATCHED EXISTING BLAZES ALONG THE SOUTH 400' OF THE EAST LINE OF THE NW 1/4 OF THE SW 1/4.
 MY BASIS OF BEARING IS FROM FOUND MONUMENT AT THE WEST 1/4 CORNER TO THE FOUND MONUMENT AT THE SW 1/16 CORNER BASED ON A MATHEMATICAL MODEL OF CS 97055.
 ALL NEW REFERENCES WERE MEASURED TO A SPIKE AT SIDE CENTER OF TREE UNLESS OTHERWISE NOTED. ALL BEARINGS WERE TAKEN WITH A HAND COMPASS WITH THE DECLINATION SET AT 18' EAST.
 A 3 SECOND TOTAL STATION WAS USED TO PERFORM ALL FIELD WORK.