

TERRA SURVEYING  
TOWNHOUSE PARTITION PLAT  
for  
GREG CRAFTS

FOUND 5/8" IRON ROD OF RECORD, ACCEPTED AS THE NW CORNER OF BLOCK 3

FOUND CITY OF HOOD RIVER MONUMENT J-1 IN MONUMENT CASE

HOOD RIVER COUNTY SURVEYOR'S OFFICE

CS# 2014 011

DATE FILED: 5-21-14

BY: *[Signature]*

OWNER:  
CRAFTS INVESTMENT, LLC  
2 EUGENE STREET  
HOOD RIVER, OR 97031

File Number 2014-03 P  
Instrument received on the 7th day of MAY, 2014 at 9:03 A.M.

*[Signature]*  
Hood River County Director of Records and Assessments.

SURVEYOR'S CERTIFICATE

I, Erik M. Carlson, being first duly sworn, depose and say that I have correctly surveyed and marked with proper monuments the lands represented on this Partition Plat, the boundaries being described as the South 75 feet of Lots 17 and 18, Block 3, A.S. Blower's Addition to Hood River, in the City of Hood River, County of Hood River and State of Oregon.

REGISTERED PROFESSIONAL LAND SURVEYOR

*[Signature]*

OREGON  
December 30, 2005  
ERIK M. CARLSON  
72306

Expires: December, 2015

DECLARATION

We, Crafts Investments, LLC, the owner(s) of the land shown herein, hereby declare that this division of land has been made with our free consent and in accordance with our desires and grant the easements as shown on this plat.

*[Signature]* 4/22/14  
Representative of Crafts Investments, LLC Date

State of OREGON }  
County of HOOD RIVER } s.s.

This instrument was acknowledged before me on APRIL 22, 2014 (date)

by GREG CRAFTS  
as representative of CRAFTS INVESTMENTS, LLC  
*[Signature]*  
Notary Signature

Public Notary #465941  
My Commission expires: 02-20-2016

I hereby certify that all taxes and assessments due hereon have been fully paid as required by law.

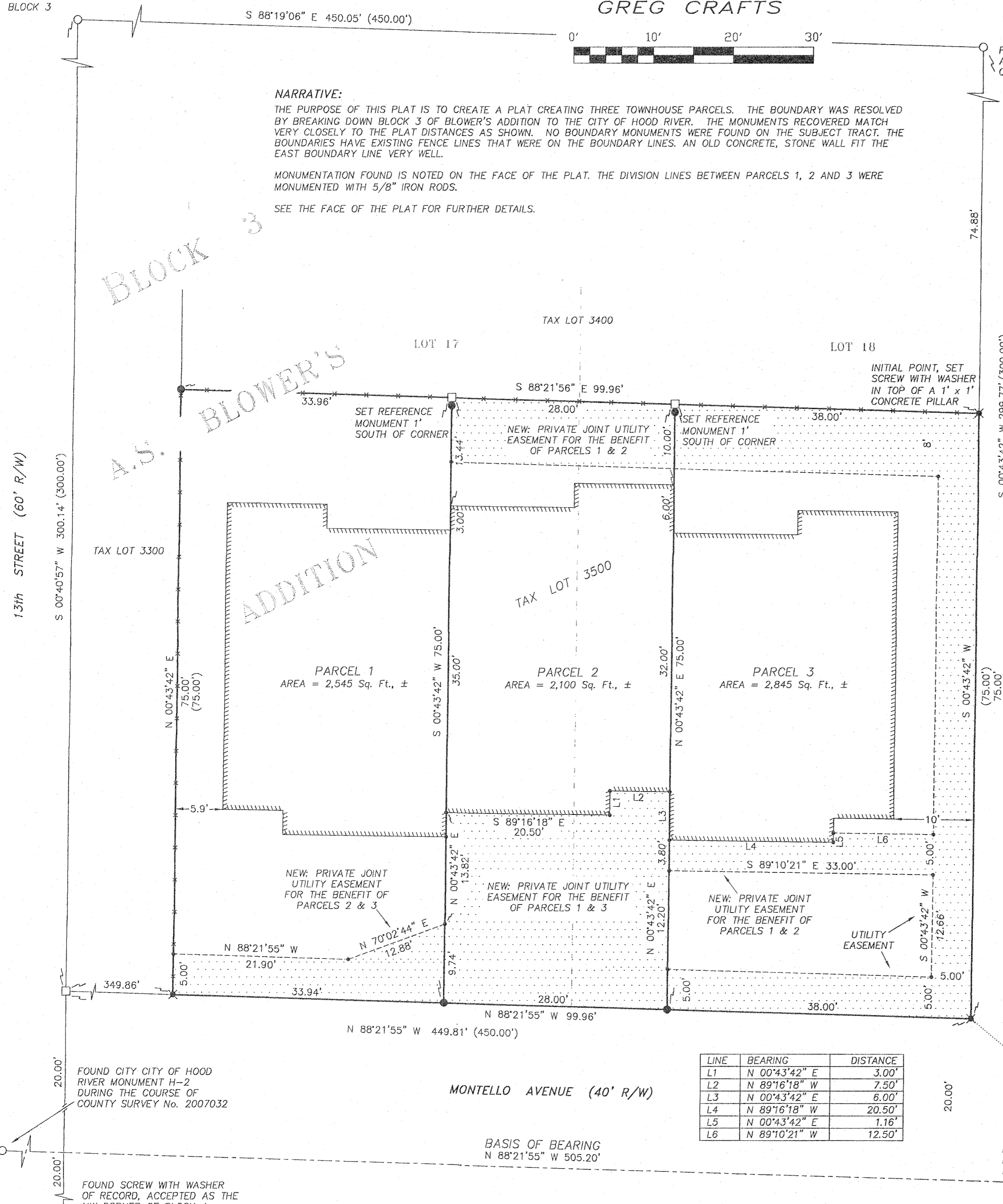
Hood River County Director of Budget and Finance, Treasurer/ Tax Collector

I hereby certify this partition was examined and approved as of this 22nd day of APRIL, 2014

*[Signature]*  
Hood River County Surveyor

I hereby certify this partition was examined and approved as of this 22nd day of APRIL, 2014

Planning File Number #2013-21  
*[Signature]*  
Cynthia A. Walbridge



S 00°43'46" W 339.82'

SCALE: 1" = 10'

LOCATION OF SURVEY:  
PORTION OF BLOCK 3, OF THE A.S. BLOWER'S ADDITION TO HOOD RIVER, LOCATED IN THE NORTHEAST QUARTER OF THE NORTHEAST QUARTER OF SECTION 35, TOWNSHIP 3 NORTH, RANGE 10 EAST, WILLAMETTE MERIDIAN, CITY OF HOOD RIVER, HOOD RIVER COUNTY, OREGON

BASIS OF BEARING:  
HOOD RIVER COUNTY SURVEY No. 2007032

ZONING:  
(R-3) URBAN HIGH DENSITY RESIDENTIAL

NOTE:  
TREES ON PARCELS 1, 2 AND 3 SHALL BE RETAINED IN ACCORDANCE WITH CITY OF HOOD RIVER LANDSCAPE CONSERVATION STANDARDS (HRMC 16.12.040(D & E)) UNLESS AN EXEMPTION(S) IS WARRANTED AND GRANTED BY THE CITY (HRMC 16.12.040(F)).

REFERENCES:  
PLAT OF A.S. BLOWER'S ADDITION  
HOOD RIVER COUNTY SURVEY No. 77067  
HOOD RIVER COUNTY SURVEY No. 2003011  
HOOD RIVER COUNTY SURVEY No. 2007032  
HOOD RIVER COUNTY SURVEY No. 2008034

LEGAL DESCRIPTION OF ORIGINAL LOT:  
THE SOUTH 75 FEET OF LOTS 17 AND 18, BLOCK 3, A.S. BLOWERS ADDITION IN HOOD RIVER, IN THE CITY OF HOOD RIVER, COUNTY OF HOOD RIVER, STATE OF OREGON.

LEGEND:

- FOUND MONUMENT OF RECORD
- SET 5/8" IRON ROD WITH RED PLASTIC CAP
- CALCULATED EASEMENT CORNER
- ⊗ SET SCREW WITH BRASS WASHER IN CONCRETE
- CALCULATED BOUNDARY CORNER
- ( ) DEED OR PLAT CALL
- x — EXISTING WIRE FENCE ON BOUNDARY LINES

LINE	BEARING	DISTANCE
L1	N 00°43'42" E	3.00'
L2	N 89°16'18" W	7.50'
L3	N 00°43'42" E	6.00'
L4	N 89°16'18" W	20.50'
L5	N 00°43'42" E	1.16'
L6	N 89°10'21" W	12.50'

TERRA SURVEYING

MONUMENTATION DATE: APRIL 21, 2014  
SCALE: 1" = 10'  
PROJECT: 13085PART  
ASSESSORS MAP: 3N-10E-35AA TL 3500  
P.O. BOX 617  
HOOD RIVER, OREGON 97031  
PHONE: (541) 386-4531  
E-Mail: terra@gorge.net  
www.terralandsurveying.com

FOUND CITY OF HOOD RIVER MONUMENT J-2 IN MONUMENT CASE

FOUND CITY OF HOOD RIVER MONUMENT H-2 DURING THE COURSE OF COUNTY SURVEY No. 2007032

FOUND SCREW WITH WASHER OF RECORD, ACCEPTED AS THE NW CORNER OF BLOCK 4

CS 2014 011