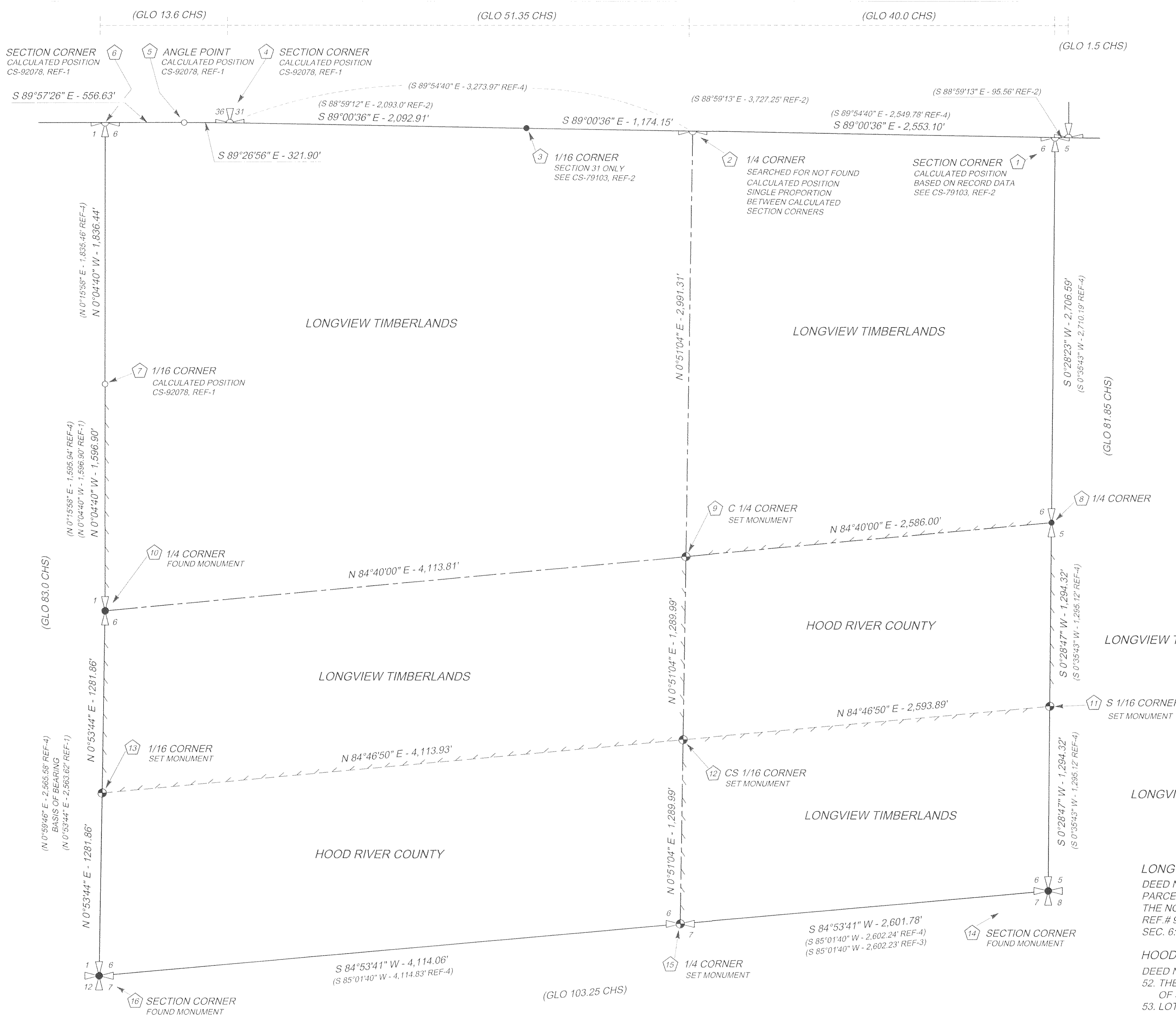
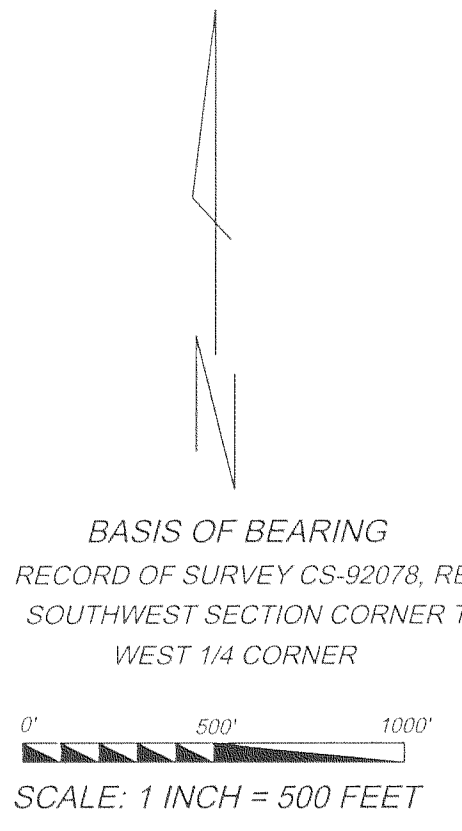


RECORD OF SURVEY
 FOR
 LONGVIEW TIMBER
 SECTION 6, T 1 N, R 9 E, W.M.
 HOOD RIVER COUNTY, OREGON

MONUMENTS SET FROM AUGUST 12, 2013
 TO SEPTEMBER 4, 2013



BASIS OF BEARING
 RECORD OF SURVEY CS-92078, REF-1
 SOUTHWEST SECTION CORNER TO
 WEST 1/4 CORNER

LONGVIEW TIMBERLANDS, LLC.
 DEED NO. 2007-04104
 PARCEL 12: LOTS 3, 4, 6, 7, 8, 9, 10 AND 11 AND THE SOUTH HALF OF
 THE NORTHEAST QUARTER OF SECTION 6, T 1 N, R 9 E, W.M.
 REF. # 93-24-04, T 1 N, R 9 E, W.M.
 SEC. 6: LOTS 1, 2 AND 5 AND S1/2SE1/4

HOOD RIVER COUNTY
 DEED NO. 51557 BOOK 28 PAGE 12
 52. THE NORTH HALF OF THE SOUTHWEST QUARTER
 OF SECTION 6,
 53. LOTS 12, 13, 14 IN SECTION 6

THIS MAP CORRECTLY REPRESENTS A SURVEY MADE BY ME
 AT THE REQUEST OF LONGVIEW FIBRE CO. IN MAY 2013.

- REFERENCE 1: SURVEY BY HAGEDORN, INC. FOR MT. HOOD NATIONAL FOREST
 "903 CADASTRAL SURVEY" DATED JULY 1991, CS-92078
- REFERENCE 2: SURVEY BY BISHOP SURVEYING FOR MT. HOOD NATIONAL FOREST
 "DOG RIVER CADASTRAL" DATED 6/29/79, CS-79103
- REFERENCE 3: SURVEY BY TERRA SURVEYING FOR LONGVIEW FIBRE AND
 HOOD RIVER COUNTY, FILED NOV. 7, 1995, CS-95105
- REFERENCE 4: SURVEY BY HOOD RIVER COUNTY, DATED NOV. 17, 1971, CS-1242

- LEGEND**
- SECTION CORNER, 1/4 CORNER FOUND AS NOTED
 - FOUND MONUMENT AS NOTED
 - SET 3/4" X 30" PIPE WITH 2" BRASS CAP STAMPED AS SHOWN
 - CALCULATED POSITION BASED ON RECORD DATA AS NOTED
 - RECORD BEARING AND/OR DISTANCE, AS NOTED
 - LINE MARKED WITH 1/2" X 60" FIBER GLASS RODS
 RED AND WHITE RIBBON ALONG LINE BETWEEN RODS
 TREES ALONG LINE PAINTED WITH BLUE PAINT

REGISTERED
 PROFESSIONAL
 LAND SURVEYOR

George J. Ford
 DEC 9, 2013

OREGON
 JULY 17, 1986
 GEORGE J. FORD
 #2210

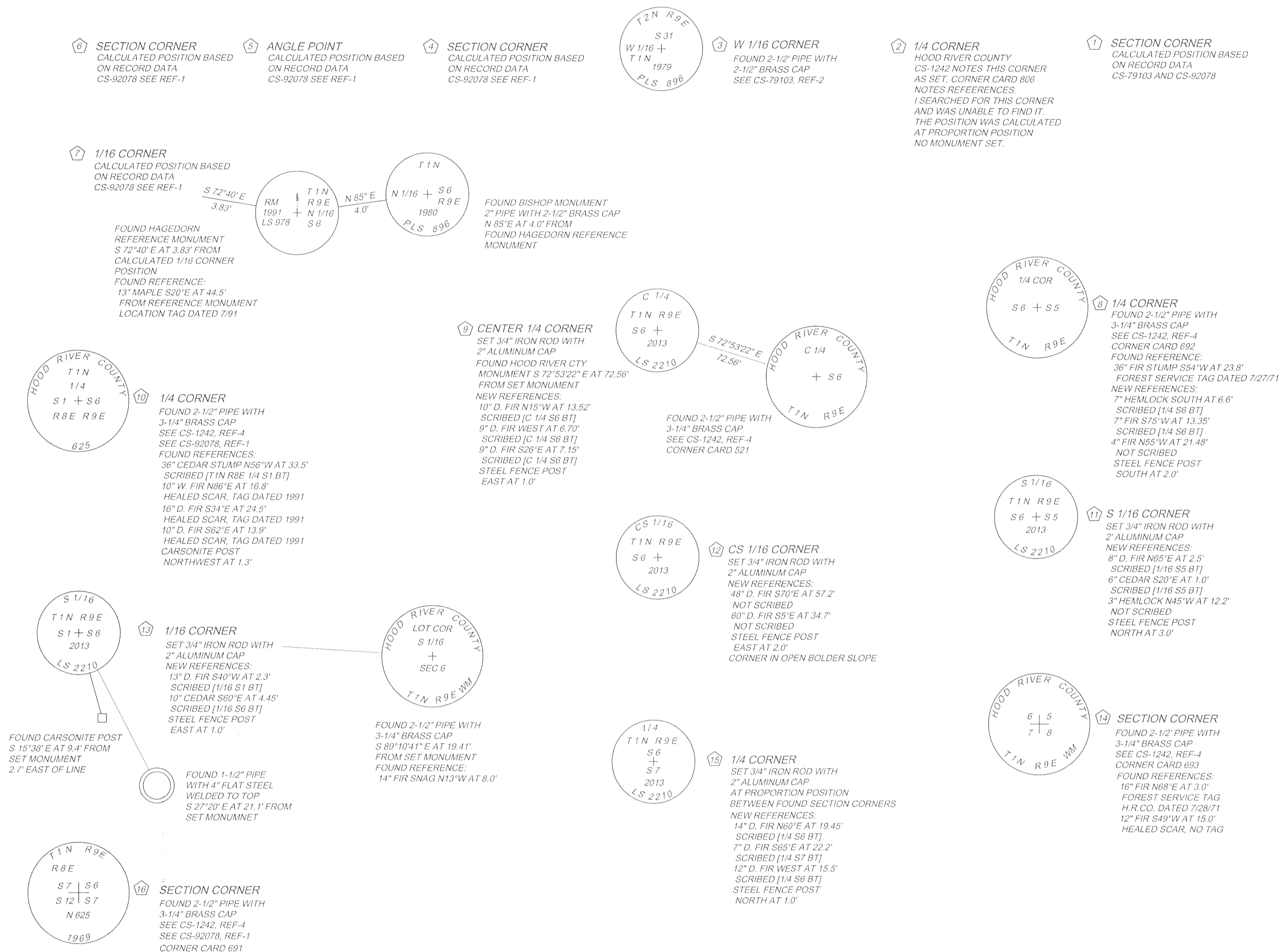
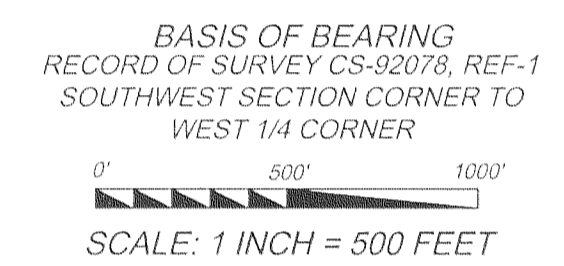
EXP: 12/31/13

GEORGE J. FORD, PLS
 CERTIFICATE NO. 2210

PO BOX 353
 KLICKITAT, WA 98628
 (509) 369-1014

RECORD OF SURVEY
 FOR
 LONGVIEW TIMBER
 SECTION 6, T 1 N, R 9 E, W.M.
 HOOD RIVER COUNTY, OREGON

AUGUST 24, 2012



NARRATIVE

LABAN H. WHEELER SURVEYED THE SOUTH LINE OF TOWNSHIP 2 NORTH, RANGE 9 EAST UNDER CONTRACT NO. 482, DATED JULY 13, 1883.
 NEWTON CLARK SURVEYED THE WEST LINE, RESURVEYED THE NORTH LINE AND SURVEYED THE SUBDIVISION LINES OF TOWNSHIP 1 NORTH, RANGE 9 EAST UNDER CONTRACT NO. 502, DATED MAY 13, 1894.
 SECTION 6 WAS SURVEYED BY HOOD RIVER COUNTY, REF-4, IN 1971. THIS SURVEY REFLECTS THAT SURVEY EXCEPT FOR THE NORTHWEST CORNER WHICH WAS RE-ESTABLISHED BY HAGEDORN, REF-1, I TIED THE SOUTHWEST CORNER, WEST 1/4 CORNER AND THE REFERENCE MONUMENT AT THE NORTH 1/16 CORNER; ALL COMMON WITH HAGEDORN'S SURVEY, REF-1. I CALCULATED THE NORTHWEST CORNER OF SECTION 6 AND THE SOUTHWEST CORNER OF SECTION 31, T 2 N, R 9 E, ALSO SHOWN ON BISHOP SURVEY, REF-2. I SEARCHED FOR AND COULD NOT FIND THE NORTH 1/4 SET BY HOOD RIVER COUNTY, REF-4, BECAUSE OF THE DISCREPANCIES NOTED ON THE HAGEDORN SURVEY, REF-1, I AM NOT SURE I COULD HAVE ACCEPTED THE POSITION HAD I RECOVERED IT.
 I TIED THE WEST 1/16 ON THE SOUTH LINE OF SECTION 31 AS NOTED ON BISHOP SURVEY, REF-2, AND BASED ON HIS RECORD DATA TO THE SOUTHWEST CORNER OF SECTION 31 AND THE TIED WEST 1/16 CORNER I CALCULATED THE NORTHEAST CORNER OF SECTION 6. THE CALCULATED POSITION COINCIDED RELATIVELY WELL WITH A CALCULATED POSITION BASED ON TIES TO THE THE EAST 1/4 OF SECTION 6 AND THE SOUTHEAST CORNER OF SECTION 6 USING HOOD RIVER COUNTY RECORD DATA, REF-4. I THEN CALCULATED THE NORTH 1/4 CORNER BY PROPORTION BETWEEN THE NOTED CALCULATED NORTHWEST AND NORTHEAST CORNERS OF SECTION 6. THE SOUTH 1/4 CORNER OF SECTION 6 WAS NOT FOUND AND WAS SET AT THE PROPORTION POSITION BETWEEN THE FOUND SOUTHWEST AND SOUTHEAST CORNERS. THE EAST AND WEST 1/4 CORNERS WERE FOUND AS NOTED ON THE HOOD RIVER COUNTY SURVEY, REF-4, AND TERRA SURVEY, REF-3.
 THE CENTER 1/4 CORNER WAS SET AT THE INTERSECTION OF THE NORTH-SOUTH CENTERLINE BASED ON CALCULATED POSITIONS OF THE NORTH AND SOUTH 1/4 CORNERS AND THE EAST-WEST CENTER LINE BASED ON FOUND EAST AND WEST 1/4 CORNERS. THE SOUTH 1/16 CORNER ON THE WEST LINE WAS SET AT THE MIDPOINT BETWEEN THE FOUND WEST 1/4 CORNER AND THE FOUND SOUTHWEST CORNER. THE CENTER SOUTH 1/16 CORNER WAS SET AT THE MIDPOINT BETWEEN THE SET CENTER 1/4 CORNER AND THE SET SOUTH 1/4 CORNER. THE SOUTH 1/16 CORNER ON THE EAST LINE WAS SET AT THE MIDPOINT BETWEEN THE FOUND EAST 1/4 CORNER AND THE FOUND SOUTHEAST CORNER. THE CENTER 1/4 CORNER POSITION BASED ON THE HOOD RIVER SURVEY, REF-4, DID NOT COINCIDE WITH THE FOUND MONUMENT. THE HOOD RIVER COUNTY SURVEY, REF-4, DID NOT CLOSE BY APPROXIMATELY 100 FEET IN NORTHING. THE NORTH LINE IS NOTED AS S 89°54'40" E AND IS PLOTTED AT SOMETHING CLOSER TO S 88°54'40" E. THE SURVEY OF SECTION 6 BY HOOD RIVER COUNTY, REF-4, CLOSES USING THE BEARING AS PLOTTED. IT APPEARS THE INITIAL SURVEY BY HOOD RIVER COUNTY, REF-4, WAS ACCURATE.

NOTE: NEW REFERENCES HAVE AN 8" SPIKE AT BASE OF SCRIBE WITH LONGVIEW FIBRE COMPANY LOCATION TAG ABOVE SCRIBE. ALL ORIENTED TOWARD THE MONUMENT. DISTANCES MEASURED TO SPIKE. BEARINGS TO REFERENCES TAKEN WITH HAND COMPASS HAVING A DECLINATION OF 16° EAST, UNLESS NOTED OTHERWISE

THIS MAP CORRECTLY REPRESENTS A SURVEY MADE BY ME AT THE REQUEST OF LONGVIEW TIMBER, IN MAY 2013.

GEORGE J. FORD, PLS
 CERTIFICATE NO. 2210

PO BOX 353
 KLICKITAT, WA 98628
 (509) 369-1014

REGISTERED
 PROFESSIONAL
 LAND SURVEYOR

George J. Ford
 Dec 9, 2013

OREGON
 JULY 17, 1986
 GEORGE J. FORD
 #2210

EXP: 12/31/13

LEGEND

- SECTION CORNER, 1/4 CORNER FOUND AS NOTED
- FOUND MONUMENT AS NOTED
- SET 3/4" X 30" PIPE WITH 2" BRASS CAP STAMPED AS SHOWN
- RECORD BEARING AND/OR DISTANCE, AS NOTED
- LINE MARKED WITH 1/2" X 60" FIBER GLASS RODS
 RED AND WHITE RIBBON ALONG LINE BETWEEN RODS
 TREES ALONG LINE PAINTED WITH BLUE PAINT