

TERRA SURVEYING
PARTITION PLAT
for
PORT OF CASCADE LOCKS

HOOD RIVER COUNTY
SURVEYOR'S OFFICE

CS# 2013 045
DATE FILED: 12-2-13
BY: RK

File Number 2013-08P
Instrument received on the 22nd day of Nov., 2013 at 9:40 A.M.
M. Keller
Hood River County Director of Records and Assessments.

NARRATIVE:
THE PURPOSE OF THIS SURVEY IS TO PARTITION TAX LOT 1500 INTO THREE NEW PARCELS. THE BOUNDARY RESOLUTION IS BASED ON MONUMENTATION THAT WAS FOUND IN THE FIELD. MONUMENTS ARE SHOWN ON THE FACE OF THE PLAT. MANY OF THE FOUND MONUMENTS WERE CALLED FOR ON THE GRANTING DEEDS, THESE MONUMENTS WERE HELD.

LOCATION OF SURVEY:
LOCATED IN THE S.W. 1/4 OF SECTION 12, TOWNSHIP 2 NORTH, RANGE 7 EAST OF THE WILLAMETTE MERIDIAN

BASIS OF BEARING:
HOOD RIVER COUNTY SURVEY No. 83021

REFERENCES:
HOOD RIVER COUNTY SURVEY #83021
HOOD RIVER COUNTY SURVEY #85042
HOOD RIVER COUNTY SURVEY #85089
HOOD RIVER COUNTY SURVEY #85089
HOOD RIVER COUNTY SURVEY #92087
HOOD RIVER COUNTY SURVEY #96064
HOOD RIVER COUNTY SURVEY #97010
HOOD RIVER COUNTY SURVEY #2008065

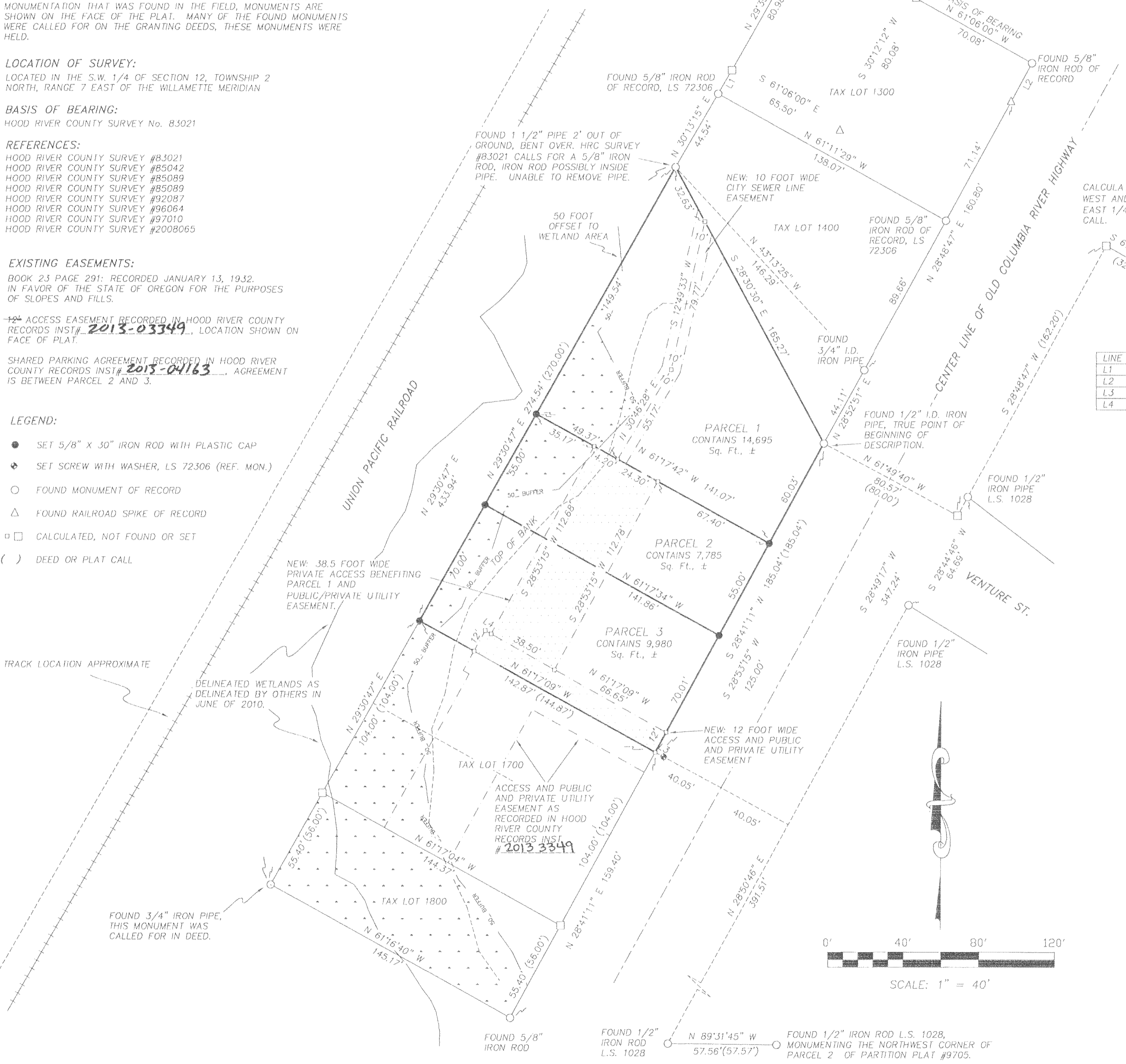
EXISTING EASEMENTS:
BOOK 23 PAGE 291: RECORDED JANUARY 13, 1932, IN FAVOR OF THE STATE OF OREGON FOR THE PURPOSES OF SLOPES AND FILLS.

~~12~~ ACCESS EASEMENT RECORDED IN HOOD RIVER COUNTY RECORDS INST# 2013-03349, LOCATION SHOWN ON FACE OF PLAT.

SHARED PARKING AGREEMENT RECORDED IN HOOD RIVER COUNTY RECORDS INST# 2013-04163, AGREEMENT IS BETWEEN PARCEL 2 AND 3.

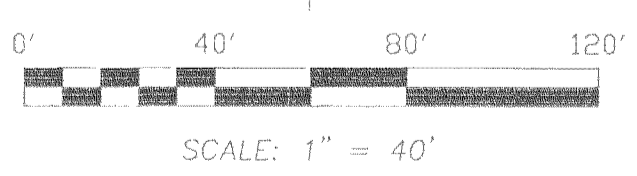
- LEGEND:**
- SET 5/8" X 30" IRON ROD WITH PLASTIC CAP
 - ◆ SET SCREW WITH WASHER, LS 72306 (REF. MON.)
 - FOUND MONUMENT OF RECORD
 - △ FOUND RAILROAD SPIKE OF RECORD
 - CALCULATED, NOT FOUND OR SET
 - () DEED OR PLAT CALL

TRACK LOCATION APPROXIMATE
DELINEATED WETLANDS AS DELINEATED BY OTHERS IN JUNE OF 2010.



CALCULATED P.O.B. BEING 3664.87' WEST AND 1476.76' SOUTH OF THE EAST 1/4 OF SECTION 12, DEED CALL.

LINE	BEARING	DISTANCE
L1	S 30°13'15" W	14.39'
L2	N 28°20'40" E	23.08'
L3	S 61°17'09" E	5.00'
L4	N 61°17'09" W	3.58'



ZONING:
(D) DOWNTOWN ZONE

OWNER:
PORT OF CASCADE LOCKS
355 CASCADE LOCKS HWY
CASCADE LOCKS, OR 97014
PH: 541-374-8619

TERRA SURVEYING

MONUMENTATION DATE: JUNE 5, 2013
SCALE: 1" = 40'
PROJECT: 13011PART
ASSESSORS MAP: 2N-7E-12CD TL 1500
P.O. BOX 617
HOOD RIVER, OREGON 97031
PHONE: (541) 386-4531
E-Mail: terra@gorge.net
www.terralandsurveying.com

SURVEYOR'S CERTIFICATE
I, Erik M. Carlson, being first duly sworn, depose and say that I have correctly surveyed and marked with proper monuments the lands represented on this Partition Plat, the boundaries being described in Book 23, Page 291 of Hood River County records.

REGISTERED PROFESSIONAL LAND SURVEYOR
Erik M. Carlson
OREGON
December 30, 2005
ERIK M. CARLSON
72306
Expires: December, 2013

ACKNOWLEDGMENTS
We the owner(s) of the land shown herein, hereby declare that this division of land has been made with our free consent and in accordance with our desires and grant the easements as shown on this plat.

Jess Groves 8/15/13
OWNER DATE
This instrument was acknowledged before me as a representative of The Port of Cascade Locks, the 15 day of August, 2013 by Jess Groves
Martin Ann Wynn
Notary Signature

STATE OF Oregon }
COUNTY OF Hood River } s.s.
Subscribed and sworn to before me on this 15 day of August, 2013

NOTARY PUBLIC - OREGON
COMMISSION NO. 474482
MY COMMISSION EXPIRES 1-2-17

I hereby certify that all taxes and assessments due hereon have been fully paid as required by law.

Richard Brown
Hood River County Director of Budget and Finance, Treasurer/ Tax Collector

I hereby certify this partition was examined and approved as of this 19th day of NOVEMBER, 2013
Ronald Roberts

Hood River County Surveyor

I hereby certify this partition was examined and approved as of this 25th day of OCTOBER, 2013

Planning File Number LU13-001
Cecilia Pagan
City of Cascade Locks Administrator

RECEIVED NOV 22 2013

CS 2013 045