

TERRA SURVEYING

LOCATION OF SURVEY:

A PORTION OF BLOCK 7, OF THE AMENDED PLAT OF IDLEWILDE ADDITION TO HOOD RIVER, LOCATED IN THE NORTHEAST QUARTER OF THE SOUTHEAST QUARTER OF SECTION 26, TOWNSHIP 3 NORTH, RANGE 10 EAST, WILLAMETTE MERIDIAN, CITY OF HOOD RIVER, HOOD RIVER COUNTY, OREGON

HOOD RIVER COUNTY SURVEYOR'S OFFICE

CS# 2013 041

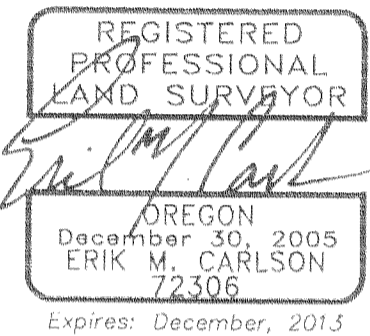
DATE FILED: 10-8-13

BY: *[Signature]*

File Number 2013-06P
Instrument received on the 3RD day of OCTOBER, 2013 at 9:51 A.M.
[Signature]
Hood River County Director of Records and Assessments.

SURVEYOR'S CERTIFICATE

I, Erik M. Carlson, being first duly sworn, depose and say that I have correctly surveyed and marked with proper monuments the lands represented on this Re-Plat the boundaries being described on instrument 201301218 Hood River County records.



DECLARATION

We the owner(s) of the land shown herein, hereby declare that this division of land has been made with our free consent and in accordance with our desires and grant the easements as shown on this plat.

[Signature] 9-30-13
OWNER DATE

State of Oregon }
County of Hood River } s.s.

This instrument was acknowledged before me on 9/30/13 (date)

by Michael Kitts as representative of Michael Kitts Homes, Inc.

[Signature]
Notary Signature

Public Notary
My Commission expires: March 11, 2016

I hereby certify that all taxes and assessments due hereon have been fully paid as required by law.

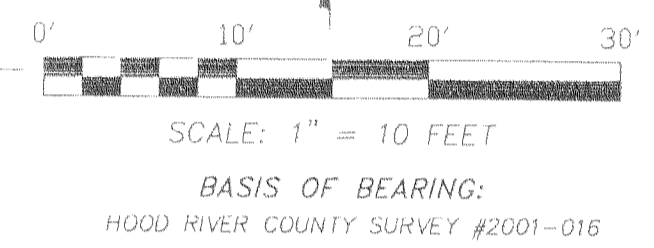
[Signature]
Hood River County Director of Budget and Finance, Treasurer/ Tax Collector

I hereby certify this partition was examined and approved as of this 1st day of October, 2013

[Signature]
Hood River County Surveyor

I hereby certify this partition was examined and approved as of this 2nd day of October, 2013

Planning File Number 2013-12
[Signature]
City of Hood River Planner



NARRATIVE:

THE PURPOSE OF THIS SURVEY WAS TO RE-PLAT TAX LOT 2403 OF ASSESSORS MAP 3N-10-26DA INTO A TOWNHOME RE-PLAT. THIS METHOD WAS USED BECAUSE THE TOWNHOME WAS BUILT OVER THE ORIGINAL PLATTED LOT LINE BETWEEN LOTS 6 AND 7, BLOCK 7, OF THE AMENDED PLAT OF IDLEWILDE ADDITION TO HOOD RIVER. THIS PROCESS NOW MOVES THE BOUNDARY LINE TO THE MIDDLE OF THE TOWNHOMES.

MONUMENTATION FOUND IS NOTED ON THE PLAT. THE DIVISION LINE BETWEEN PARCEL 1 AND 2 WERE MONUMENTED WITH 5/8" IRON RODS. BASIS OF BEARING WAS ESTABLISHED BY FOUND MONUMENTS BASED ON HOOD RIVER COUNTY SURVEY No. 2001016.

EXISTING EASEMENTS:

HOOD RIVER COUNTY RECORDS INST. #20013183. DECLARATION OF DEED RESTRICTIONS. THIS DOCUMENT WAS PART OF THE PROPERTY LINE ADJUSTMENT AS AN AGREEMENT FOR IMPROVEMENTS.

HOOD RIVER COUNTY RECORDS INST. #20015254. IN FAVOR OF PACIFICORP FOR THE PURPOSES OF POWER DISTRIBUTION. EASEMENT DIAGRAM GIVES GENERAL LOCATION, FIELD TIES SHOW PHYSICAL LOCATION OF UTILITY.

HOOD RIVER COUNTY RECORDS INST. #20025012 FOR THE PURPOSE LANDSCAPING. IN FAVOR OF PARCEL 2 OF HOOD RIVER COUNTY PARTITION PLAT No. 200217P.

HOOD RIVER COUNTY RECORDS INST. #201102462. AN AMENDMENT TO MICROFILM No. 20035938. EASEMENT FOR THE PURPOSES OF UTILITY AND ACCESS ROAD MAINTENANCE AGREEMENT.

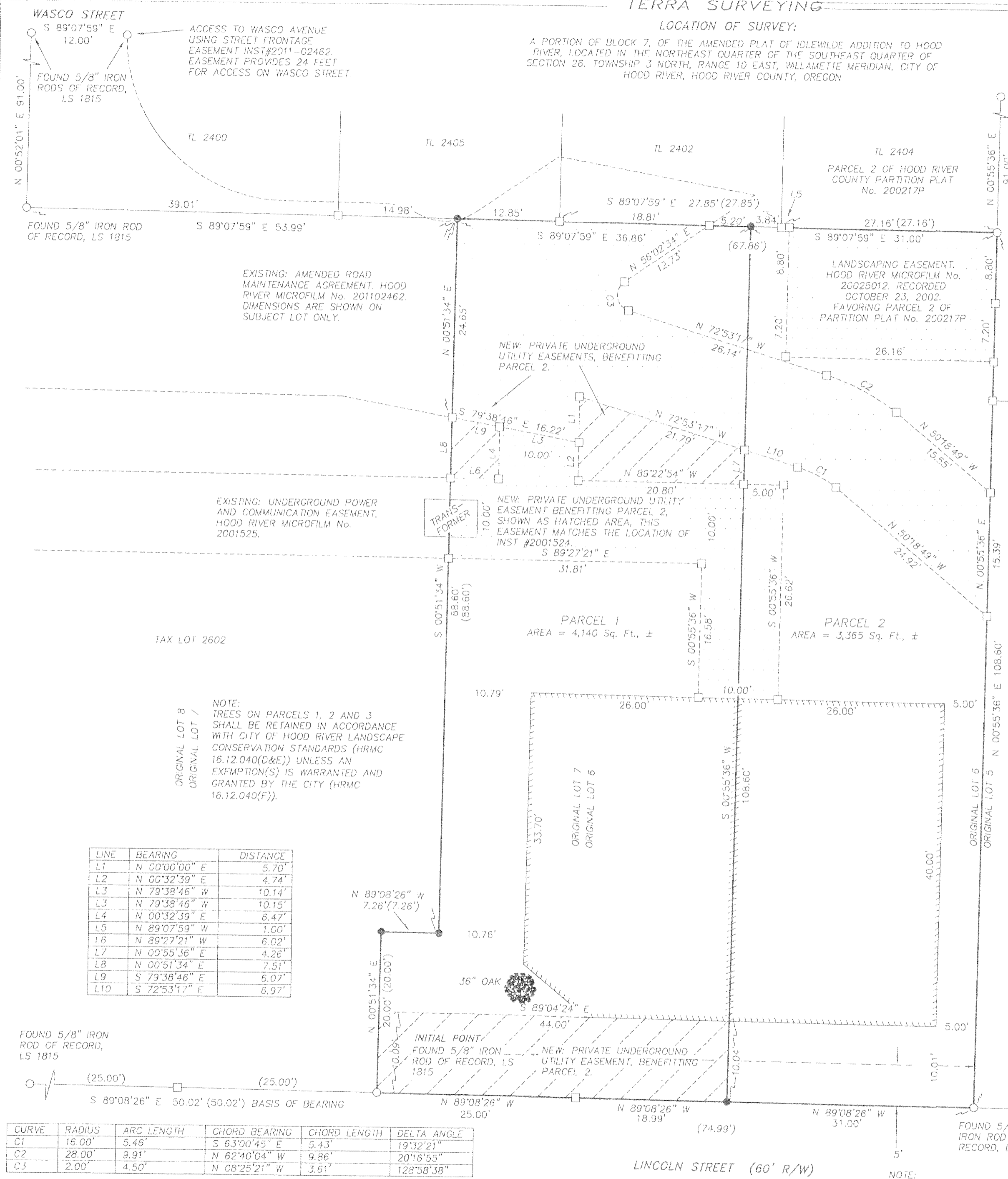
REFERENCES:

- HOOD RIVER COUNTY SURVEY No. 2000009
- HOOD RIVER COUNTY SURVEY No. 2001016
- HOOD RIVER COUNTY SURVEY No. 2002047
- HOOD RIVER COUNTY SURVEY No. 2011028

ZONING:

(R-3) URBAN HIGH DENSITY RESIDENTIAL

LINE	BEARING	DISTANCE
L1	N 00°00'00" E	5.70'
L2	N 00°32'39" E	4.74'
L3	N 79°38'46" W	10.14'
L3	N 79°38'46" W	10.15'
L4	N 00°32'39" E	6.47'
L5	N 89°07'59" W	1.00'
L6	N 89°27'21" W	6.02'
L7	N 00°55'36" E	4.26'
L8	N 00°51'34" E	7.51'
L9	S 79°38'46" E	6.07'
L10	S 72°53'17" E	6.97'



CURVE	RADIUS	ARC LENGTH	CHORD BEARING	CHORD LENGTH	DELTA ANGLE
C1	16.00'	5.46'	S 63°00'45" E	5.43'	19°32'21"
C2	28.00'	9.91'	N 62°40'04" W	9.86'	20°16'55"
C3	2.00'	4.50'	N 08°25'21" W	3.61'	128°58'38"

- LEGEND:
- FOUND MONUMENT OF RECORD
 - SET 5/8" IRON ROD WITH RED PLASTIC CAP
 - CALCULATED BOUNDARY CORNER
 - () DEED CALL

MICHAEL KITTS HOMES, INC., AN OREGON CORPORATION

MONUMENTATION DATE: AUGUST 14, 2013
SCALE: 1" = 10'
PROJECT: 13039PART
ASSESSORS MAP: 3N10E26DA TL2403
P.O. BOX 617
HOOD RIVER, OREGON 97031
PHONE: (541) 386-4531
E-Mail: terra@gorge.net
www.terralandsurveying.com

CS 2013 041