

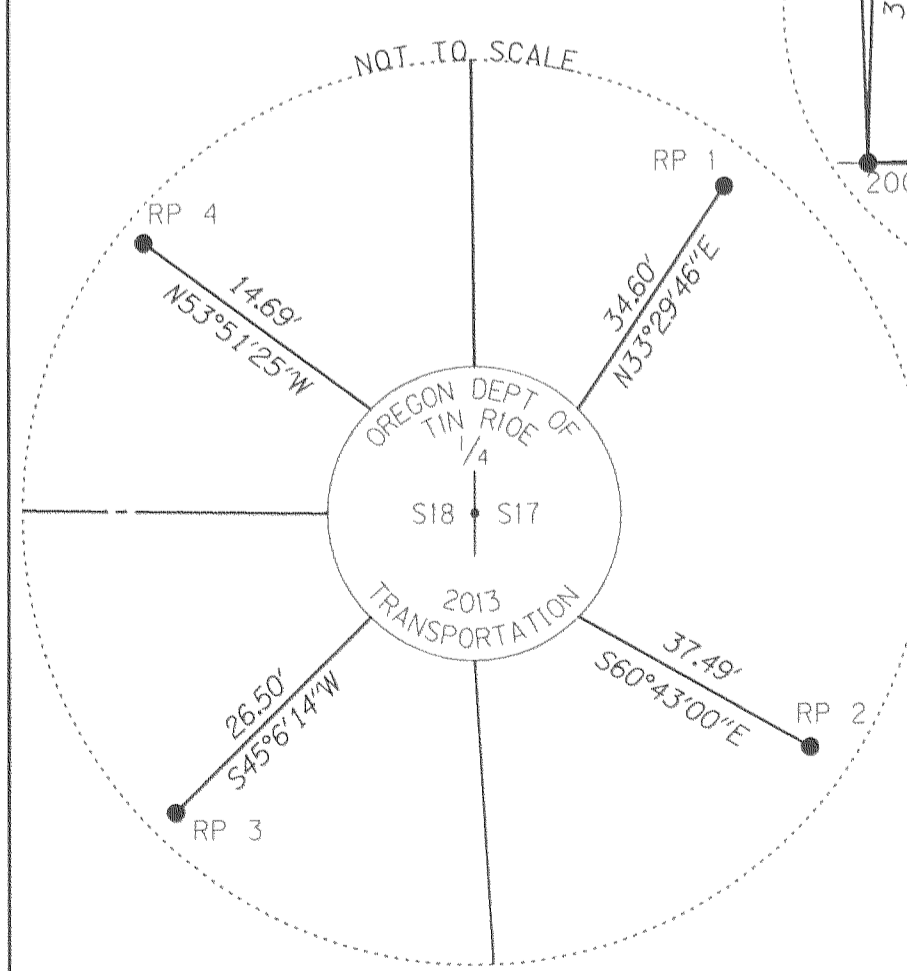
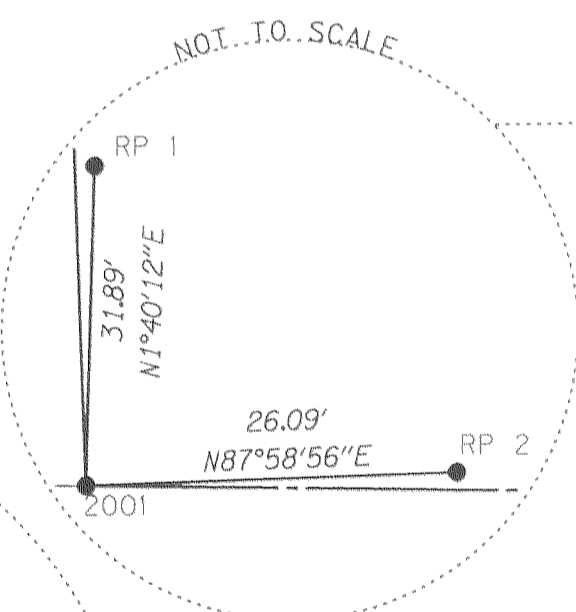
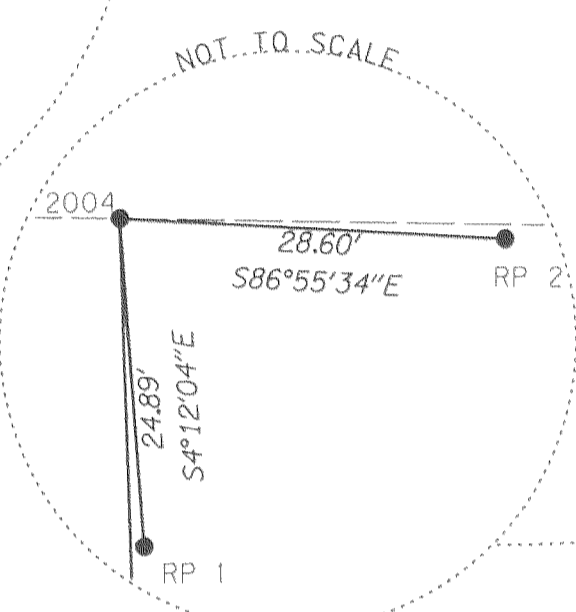
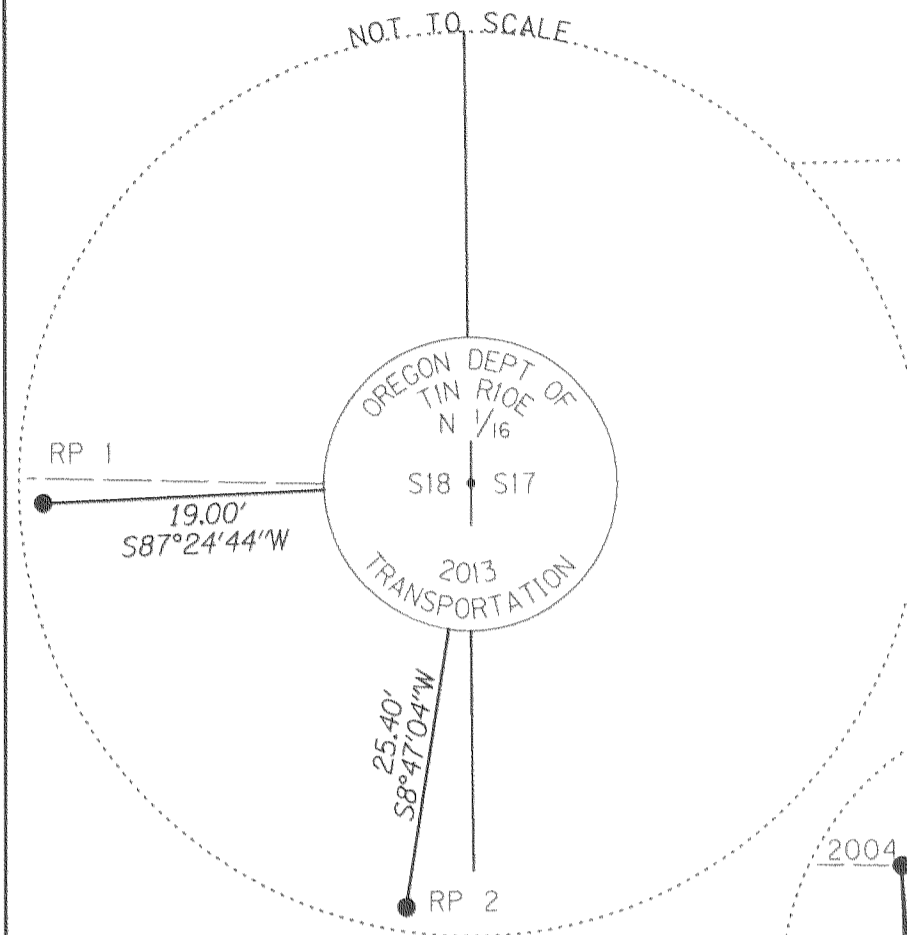
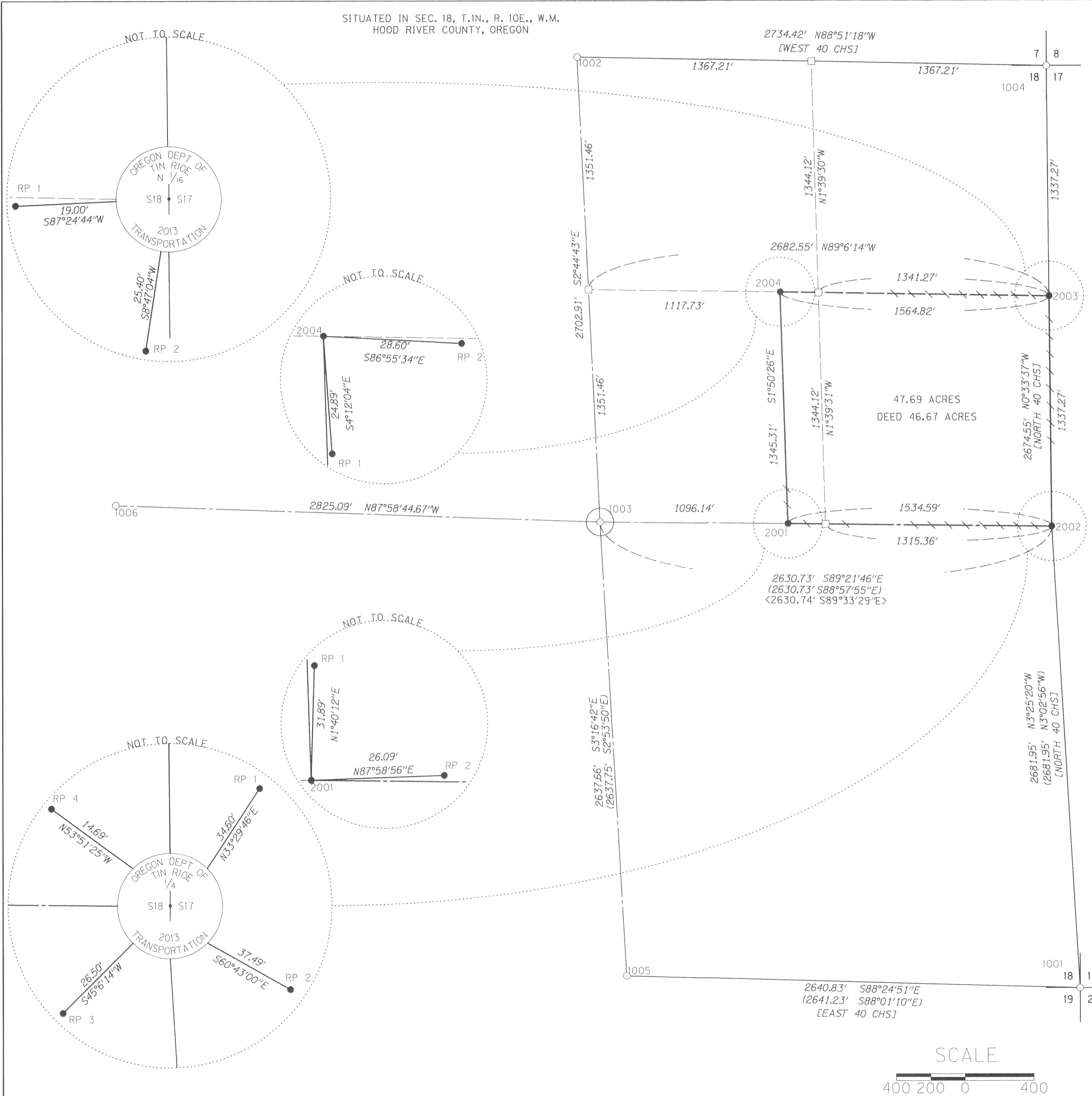
SITUATED IN SEC. 18, T.1N., R. 10E., W.M.
HOOD RIVER COUNTY, OREGON

Hood River County
Surveyor's Office

Survey No: *CS 2013 025*

Filed Date: *6-24-13*

By: *[Signature]*



N

REGISTERED
PROFESSIONAL
LAND SURVEYOR

[Signature]

OREGON
MAY 12th, 2010
WILLIAM L. DYE
46426

EXPIRES: DECEMBER 31, 2013

LEGEND

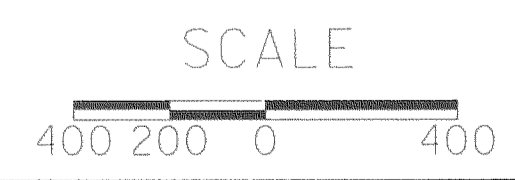
()	RECORD DATA PER COUNTY SURVEY 7350
[]	ORIGINAL SURVEY 1879
< >	ODOT FIELD SURVEY 1976
○	FOUND MONUMENT
●	SET MONUMENT
□	CALCULATED POINT
—	BOUNDARY POSTED SEE NARRATIVE

OREGON DEPARTMENT OF TRANSPORTATION

BOUNDARY SURVEY
DEE QUARRY
HOOD RIVER COUNTY

ODOT GEOMETRONICS
4040 FAIRVIEW INDUSTRIAL DRIVE SE
MS #4
SALEM, OR 97302-1142

JUNE 21st, 2013
SCALE: 1" = 400'
SHEET 1 OF 2



SURVEY NARRATIVE

SITUATED IN SEC. 18, T.1N., R. 10E., W.M.
HOOD RIVER COUNTY, OREGON

Hood River County
Surveyor's Office

Survey No: *CS 2013 025*

Filed Date: *6/24/13*

By: *[Signature]*

THIS SURVEY OF AN EXISTING OREGON DEPARTMENT OF TRANSPORTATION ROCK QUARRY KNOWN AS "DEE QUARRY" WAS INITIATED BY THE OREGON DEPARTMENT OF GEOLOGY AND MINERAL INDUSTRIES WHO REQUESTED THAT ODOT GEOMETRONICS UNIT, MONUMENT, POST LINE AND FILE A SURVEY FOR SAID QUARRY BOUNDARY. THE BARGAIN AND SALE DEED FOR THIS PARCEL IS ON FILE IN OREGON, HOOD RIVER COUNTY, RECORD OF DEEDS, IN BOOK 25, PAGE 120 AND IS DESCRIBED AS FOLLOWS:

"THE SOUTHEAST QUARTER (SE¹/₄) OF THE NORTHEAST QUARTER (NE¹/₄) AND THE EAST ONE-THIRD (E¹/₃) OF THE EAST HALF (E¹/₂) OF THE SOUTHWEST QUARTER (SW¹/₄) OF THE NORTHEAST QUARTER (NE¹/₄) OF SECTION 18, TOWNSHIP 1 NORTH, RANGE 10 EAST, W.M., CONTAINING 46.67 ACRES."

THE EAST QUARTER CORNER OF SECTION 18 WAS DESTROYED IN ABOUT 1977. IN 1976 AN ODOT SURVEY CREW TRAVERSED FROM THE CENTER QUARTER CORNER TO THE EAST QUARTER CORNER. (THE FIELD SURVEY NOTES, BOOK 4553, ARE AVAILABLE FROM ODOT FILES IN SALEM OREGON) THE DISTANCE ON THIS SURVEY WAS WITHIN 0.01' OF A 1970 SURVEY BY GLENN D. STRAIT. STRAIT'S DISTANCES FROM THE CENTER QUARTER CORNER TO THE SOUTH QUARTER CORNER, THEN ON TO THE SOUTHEAST CORNER BOTH AGREED REASONABLY WITH THIS CURRENT 2013 SURVEY. RATHER THAN PROPORTION FROM THE NORTHEAST CORNER, THAT WAS ALREADY RESET BY DOUBLE PROPORTION, I OPTED TO USE DISTANCE-DISTANCE INTERSECT FROM THE CENTER QUARTER CORNER AND THE SOUTHEAST CORNER, USING THE DISTANCES MEASURED BY STRAIT IN 1970. IN MY OPINION THIS SHOULD MORE CLOSELY PLACE THE RESET EAST QUARTER CORNER TO ITS ORIGINAL POSITION. THE NORTH SIXTEENTH CORNER ON THE EASTERLY BOUNDARY OF SECTION 18 HAD NEVER BEEN SET. SAID CORNER WAS LOCATED AT THE MID-POINT BETWEEN THE NORTHEAST CORNER AND THE RESET EAST QUARTER CORNER AS PER THE BLM MANUAL OF SURVEYING INSTRUCTIONS, AS WERE THE REMAINDER OF THE SET AND CALCULATED CORNERS IN THE NORTHEAST QUARTER OF SECTION 18, AS SHOWN ON THIS SURVEY.

ALL FOUND CORNERS WERE LOCATED RELATIVE OF CORRECTORS FROM THE OREGON REAL TIME GPS NETWORK (ORGN) AND AT THE TIME OF THE FOUND CORNER TIES, ORGN NETWORK POSITIONS WERE NAD 83 (CORS96) EPOCH 2002.00. SET CORNERS ARE ALSO RELATIVE OF THIS ADJUSTMENT. ALL CORNERS, SET AND FOUND, WERE DOUBLE TIED USING GPS REAL TIME KINETIC (RTK) POSITIONS OR BY CLOSED AND ADJUSTED TRAVERSE RUN FROM SETS OF DOUBLE TIED RTK POSITIONS. BOUNDARY LINE WAS MARKED WITH 3/8" X 5' WHITE FIBERGLASS POSTS WITH 2 BANDS OF 2" RED REFLECTIVE TAPE AND POSTED APPROXIMATELY 1' INSIDE QUARRY BOUNDARY LINE (SEE LEGEND). THE FIRST CORNER WAS SET ON MAY 13TH, 2013. THE BASIS OF BEARING IS THE OREGON COORDINATE REFERENCE SYSTEM, GRESHAM-WARM SPRINGS ZONE AND IS DESCRIBED IN THE OREGON ADMINISTRATIVE RULES (734-005-0015(L)) AS FOLLOWS:

ONE INTERNATIONAL FOOT = 0.3048 METERS

(L) GRESHAM-WARM SPRINGS ZONE
NORTH AMERICAN DATUM OF 1983
REFERENCE ELLIPSOID: GEODETIC REFERENCE SYSTEM OF 1980
PROJECTION: TRANSVERSE MERCATOR
LATITUDE OF GRID ORIGIN: 45°00'00" NORTH
CENTRAL MERIDIAN: 122°20'00" WEST
FALSE NORTHING: 0 METERS
FALSE EASTING: 10,000 METERS
CENTRAL MERIDIAN SCALE: 1.000050 (EXACT)

SET MONUMENT LIST

PT NO	DESCRIPTION & REFERENCE DOCUMENTS
2001	SET 5/8" X 22" REBAR WITH 2" ALUMINUM CAP STAMPED "OREGON DEPT. OF TRANSPORTATION, 2013"
2001 RP1	SET 5/8" X 18" REBAR WITH 2" ALUMINUM CAP STAMPED "OREGON DEPT. OF TRANSPORTATION, RP1"
2001 RP2	SET 5/8" X 18" REBAR WITH 2" ALUMINUM CAP STAMPED "OREGON DEPT. OF TRANSPORTATION, RP2"
2002	SET 5/8" X 30" REBAR WITH 3 1/4" ALUMINUM CAP STAMPED "TIN R10E 1/4 S18 S17, 2013"
2002 RP1	SET 5/8" X 30" REBAR WITH 1 1/2" BRASS CAP STAMPED "ODOT CONTROL, RP1"
2002 RP2	SET 5/8" X 30" REBAR WITH 1 1/2" BRASS CAP STAMPED "ODOT CONTROL, RP2"
2002 RP3	SET 5/8" X 30" REBAR WITH 1 1/2" BRASS CAP STAMPED "ODOT CONTROL, RP3"
2002 RP4	SET 5/8" X 18" REBAR WITH 1 1/2" BRASS CAP STAMPED "ODOT CONTROL, RP4"
2003	SET 5/8" X 30" REBAR WITH 3 1/4" ALUMINUM CAP STAMPED "TIN R10E N 1/16 S18 S17, 2013"
2003 RP1	SET 5/8" X 30" REBAR WITH 2" ALUMINUM CAP STAMPED "OREGON DEPT. OF TRANSPORTATION, RP1"
2003 RP2	SET 5/8" X 30" REBAR WITH 2" ALUMINUM CAP STAMPED "OREGON DEPT. OF TRANSPORTATION, RP2"
2004	SET 5/8" X 30" REBAR WITH 2" ALUMINUM CAP STAMPED "OREGON DEPT. OF TRANSPORTATION, 2013"
2004 RP1	SET 5/8" X 30" REBAR WITH 2" ALUMINUM CAP STAMPED "OREGON DEPT. OF TRANSPORTATION, RP1"
2004 RP2	SET 5/8" X 30" REBAR WITH 2" ALUMINUM CAP STAMPED "OREGON DEPT. OF TRANSPORTATION, RP2"

RECOVERED MONUMENT LIST

POINT ID	DESCRIPTION
1001	FOUND 3" DIAMETER BRASS DISK STAMPED "HOOD RIVER COUNTY, TIN R10E WM, S18/S17/S19/S20, 1970, No. 625"
BT 1	A 36" DIAMETER STUMP WITH BEARING TAG, BEARS N22°E AT 25'
1002	FOUND 2" DIAMETER IRON PIPE WITH ALUMINUM CAP STAMPED "1/4 COR S7/S18 HRC"
BT 1	A 6" DIAMETER TREE W/ FOREST SERVICE LOCATION POSTER, BEARS N32°W AT 14.7'
BT 2	A 22" DIAMETER TREE W/ HOOD RIVER COUNTY SURVEY DEPARTMENT LOCATION POSTER, BEARS S42°W AT 17'
1003	FOUND 2" DIAMETER IRON PIPE WITH NO CAP IN STONE MOUND, TOP OF PIPE EXPOSED APROXIMATELY 3" ABOVE GROUND
1004	FOUND 2" DIAMETER IRON PIPE WITH ALUMINUM CAP STAMPED "SEC. COR., S7/S8/S18/S17, HRC"
BT 1	A 14" DIAMETER DOUGLAS FIR WITH SCRIBED 'X', BEARS N60°E AT 5'
BT 2	A 18" DIAMETER DOUGLAS FIR WITH SCRIBED 'X', BEARS S60°W AT 5.6'
BT 3	A 12" DIAMETER MAPLE BEARS N48°E AT 24'
1005	FOUND 1 1/2" SQUARE HEAD BOLT IN GRAVEL ROAD 1' BELOW SURFACE
BT 1	A POWER POLE, BEARS S22°W AT 11.5'
1006	FOUND 5/8" IRON ROD WITH RED PLASTIC CAP STAMPED ORLS*1815/WALS*18731
BT 1	A 14" DIAMETER STUMP WITH BEARING TAG, BEARS N57°W AT 71.4'
BT 2	A 18" DIAMETER WHITE FIR WITH BEARING TAG, BEARS N31°E AT 25.7'

REGISTERED
PROFESSIONAL
LAND SURVEYOR

[Signature]

OREGON
MAY 12th, 2010
WILLIAM L. DYE
46426

EXPIRES: DECEMBER 31, 2013

OREGON DEPARTMENT OF TRANSPORTATION
BOUNDARY SURVEY
DEE QUARRY
HOOD RIVER COUNTY

ODOT GEOMETRONICS
4040 FAIRVIEW INDUSTRIAL DRIVE SE
MS #4
SALEM, OR 97302-1142
JUNE 21st, 2013
SCALE: 1" = 400'
SHEET 2 OF 2