

# RECORD OF SURVEY

## BLOCK 26, HOOD RIVER PROPER

LOCATED IN THE NE 1/4 OF SECTION 36, TOWNSHIP 3 NORTH, RANGE 10 EAST W.M.,  
TAX LOT 4100, 03N-10E-36AB, CITY OF HOOD RIVER, OREGON.

HOOD RIVER COUNTY  
SURVEYOR'S OFFICE

Survey No: CS 2013 023

Filed Date: 6-24-13

By: RJ

### NARRATIVE:

THE PURPOSE OF THIS SURVEY IS TO MONUMENT THE BOUNDARIES BLOCK 26 OF HOOD RIVER PROPER AS CONVEYED TO RICHARD AND RACHEL HYDE BY HOOD RIVER COUNTY WARRANTY DEED DOCUMENT 2012-03883.

I ESTABLISHED THE SOUTHERLY LINE OF BLOCK 26 BY HOLDING THE RECORD MONUMENTS FOUND AT THE SOUTHEAST CORNER OF BLOCK 28 AND THE SOUTHWEST CORNER OF LOT 13, BLOCK 25 AND THEN PROPORTIONING THE MEASURED DISTANCE BETWEEN THESE MONUMENTS WITH THE RECORD PLAT DISTANCE WHILEST MAINTAINING THE RECORD DISTANCE IN THE PUBLIC RIGHT OF WAYS.

I HELD THE RIGHT OF WAY WIDTH OF 60 FEET FROM THE CALCULATED SOUTHWEST CORNER OF LOT 12 OF BLOCK 25 TO ESTABLISH THE SOUTHWEST CORNER OF BLOCK 26. THE DIRECTION FOR THE EAST LINE OF BLOCK 26 WAS HELD PARALLEL TO THE LINE FORMED BETWEEN A POINT 18 FEET WESTERLY FROM THE SOUTHWEST CORNER OF LOT 12 ALONG THE NORTHERLY RIGHT OF WAY OF EUGENE STREET AND THE MONUMENT FOUND AT THE SOUTHWEST CORNER OF LOT 8, BLOCK 25. THE ASSUMPTION WAS MADE THAT IF SERPENTINE DRIVE DID NOT EXIST AND LOT 12 WAS PLATTED AT 50 FEET WIDE TO BE CONSISTENT WITH THE OTHER LOTS INSTEAD OF 32, THIS IS HOW THE LOT LINES WOULD BE ARRANGED.

I HELD THE CALCULATED POSITION OF THE NORTHEAST CORNER OF BLOCK 28 BY HOLDING THE DISTANCES SHOWN ON C.S.#2005080 FROM THE MONUMENTS FOUND AT THE SOUTHWEST CORNER OF THE BLOCK AND THE NORTHWEST CORNER OF LOT 2 TO ESTABLISH THE EAST LINE OF BLOCK 28. I THEN OFFSET THIS LINE BY THE RECORD PLAT DISTANCE OF 60 FEET TO ESTABLISH THE WEST LINE OF BLOCK 26.

I HELD THE MONUMENTS FOUND AT THE SOUTHWEST CORNER OF LOT 10 AND THE NORTHWEST CORNER OF LOT 11 FROM C.S.#2005071 TO ESTABLISH THE NORTHERLY RIGHT OF WAY OF SERPENTINE DRIVE. I THEN OFFSET THIS LINE BY THE RECORD PLAT DISTANCE OF 60 FEET TO ESTABLISH THE NORTHERLY LINE OF BLOCK 26.

IT SHOULD BE NOTED THAT THERE ARE SOME CONFLICTING ELEMENTS BETWEEN C.S.#94036 BY P.L.S. 932 AND HIS SUBSEQUENT SURVEY C.S.#2005071. C.S.#94036 MONUMENTED THE CORNERS OF BLOCK 26, HOWEVER ALL OF THESE MONUMENTS HAVE SINCE BEEN DESTROYED. C.S.#94036 SHOWS A DIFFERENT APPROACH TO ESTABLISHING SIMILAR BOUNDARIES USING THE SAME CONTROLLING MONUMENTS AS C.S.#2005071. I HELD THE MONUMENTS ALONG THE NORTHERLY LINE OF SERPENTINE DRIVE FOUND FROM C.S.#2005071 AS A MATTER OF EQUITY TO PROTECT THE RECENT CONSTRUCTION IN BLOCK 25 AS THIS DID NOT HAVE AN ADVERSE AFFECT ON BLOCK 26. THERE ARE NUMEROUS CASES OF SIGNIFICANT DIFFERENCES IN THE RECORD DIMENSIONS OF THE PLAT OF HOOD RIVER PROPER WITH THE LOCATIONS OF THE FOUND CONTROLLING MONUMENTS MAKING IT DIFFICULT TO RESOLVE THE BOUNDARIES.

### BASIS OF BEARINGS:

STATE PLANE COORDINATES (3601 OREGON NORTH, N.A.D.83).  
THE RELATIONSHIP BETWEEN THE BEARINGS MEASURED BY THIS SURVEY AND THOSE OF R1 (C.S.# 2005080) IS ALSO SHOWN BETWEEN FOUND MONUMENTS #1 & #2.

### OWNERS:

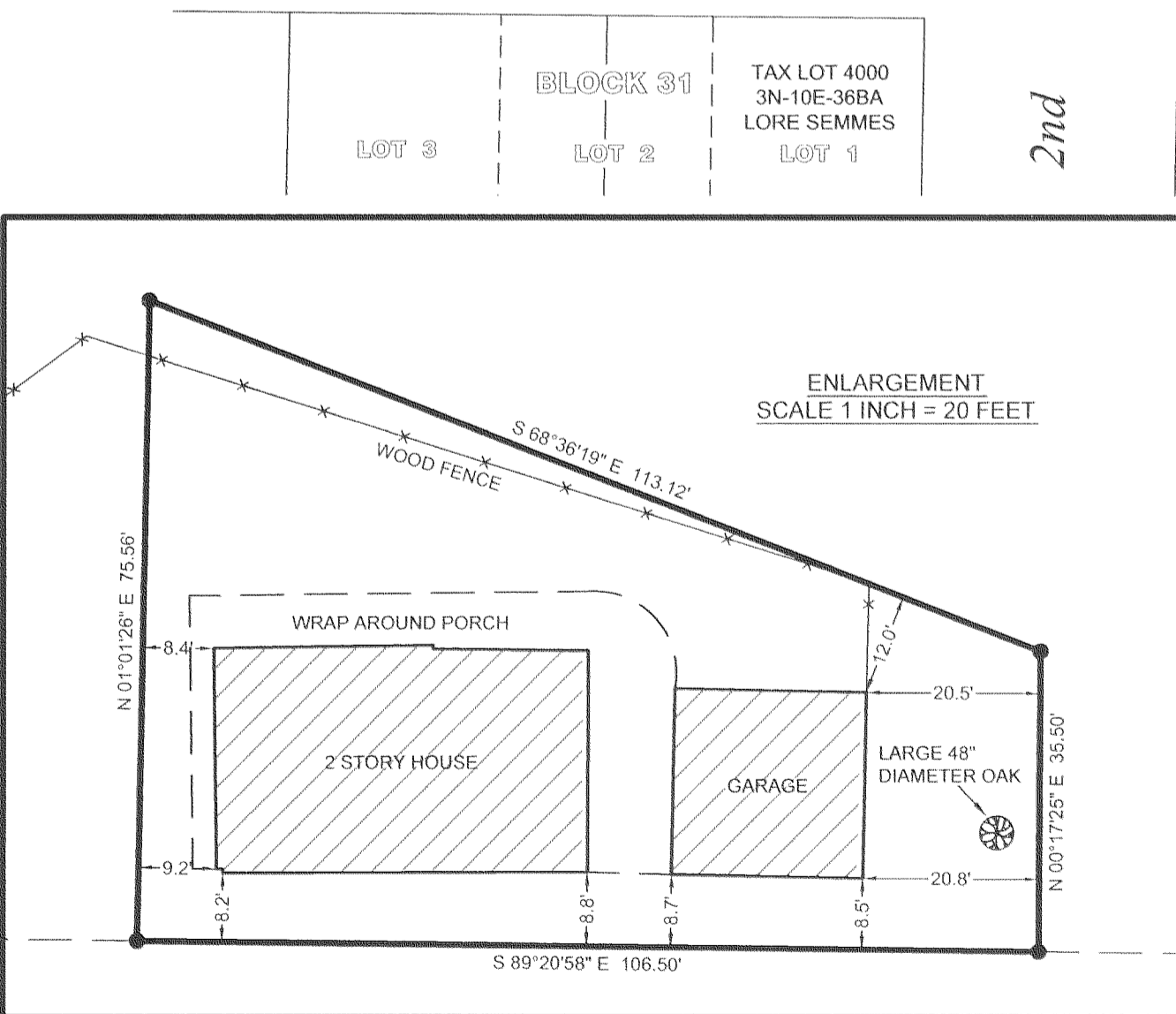
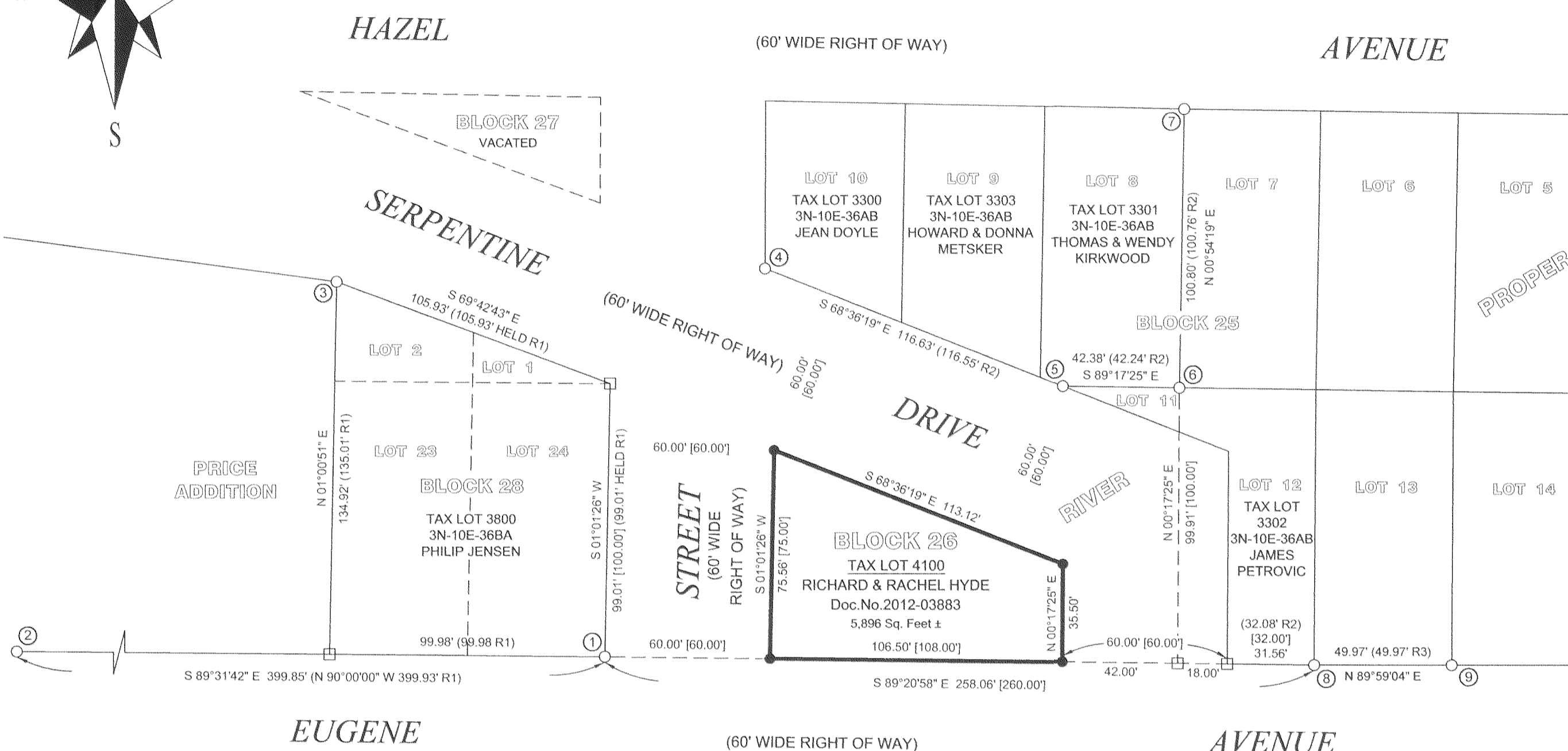
RICHARD & RACHEL HYDE  
1101 SHERMAN AVE,  
HOOD RIVER, OR, 97031.

### REFERENCES:

HOOD RIVER COUNTY SURVEYORS OFFICE:  
R1 C.S.#2005080, SURVEY BY P.L.S. 2393, FILED OCTOBER 12, 2005.  
R2 C.S.#2005071, SURVEY BY P.L.S. 932, FILED SEPTEMBER 21 2005.  
R3 C.S.#90036, SURVEY BY P.L.S. 1815, FILED JUNE 11, 1990.  
R4 C.S.#1180, SURVEY BY P.E. 2319, DATED MARCH 1965.  
C.S.#7348, SURVEY BY P.L.S. 872, FILED SEPTEMBER 12, 1973.  
C.S.#94036, SURVEY BY P.L.S. 932, FILED MAY 19, 1994.  
C.S.#2005108, SUBDIVISION PLAT OF PRICE ADDITION BY P.L.S. 2393, FILED NOVEMBER 29, 2005.

HOOD RIVER COUNTY DEED RECORDS:WARRANTY DEED  
WARRANTY DEED DOCUMENT 2012-03883, RECORDED NOVEMBER 7, 2012.

HOOD RIVER COUNTY ASSESSORS MAPS:  
3N-10E-36AB, REVISED APRIL 25, 2012.  
3N-10E-36BA, REVISED JULY 13, 2011.



### FOUND CORNER MONUMENTS:

1. FOUND NAIL IN CONCRETE STAIR STEP AS PER R4, ACCEPTED AS THE SE CORNER OF BLOCK 28.
2. FOUND 1" IRON PIPE AS PER R1, ACCEPTED AS THE SW CORNER OF LOT 17, BLOCK 28.
3. FOUND P.L.S. 2393 5/8" IRON ROD WITH YELLOW PLASTIC CAP FROM R1, ACCEPTED AS THE NW CORNER OF LOT 2, BLOCK 28.
4. FOUND P.L.S. 932 5/8" IRON ROD WITH YELLOW PLASTIC CAP FROM R2, ACCEPTED AS THE SW CORNER OF LOT 10, BLOCK 25.
5. FOUND P.L.S. 932 5/8" IRON ROD WITH YELLOW PLASTIC CAP FROM R2, ACCEPTED AS THE NW CORNER OF LOT 11, BLOCK 25.
6. FOUND P.L.S. 932 5/8" IRON ROD WITH YELLOW PLASTIC CAP FROM R2, ACCEPTED AS THE SE CORNER OF LOT 8, BLOCK 25.
7. FOUND 1" BOLT AS PER R3, ACCEPTED AS THE NE CORNER OF LOT 8, BLOCK 25.
8. FOUND 1" AXLE AS PER R3, ACCEPTED AS THE SE CORNER OF LOT 12, BLOCK 25.
9. FOUND 5/8" IRON ROD WITH NO CAP, ASSUMED FROM R3 (CAP MISSING), ACCEPTED AS THE SE CORNER OF LOT 13, BLOCK 25.

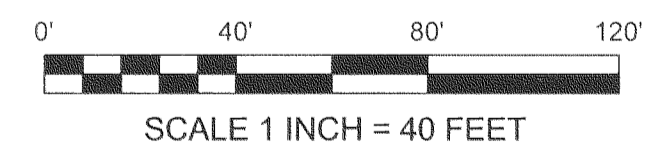
### SYMBOL LEGEND:

- SET 5/8" BY 30" IRON ROD WITH BLUE PLASTIC CAP INSCRIBED "CROSS PLS 60051"
- FOUND MONUMENT AS NOTED.
- CALCULATED CORNER - NOT FOUND OR SET
- [xx.xx'] PLAT OF HOOD RIVER PROPER DIMENSION
- (xx.xx' R#) PREVIOUS SURVEY DIMENSION WITH ASSOCIATED SURVEY REFERENCE NUMBER

REGISTERED  
PROFESSIONAL  
LAND SURVEYOR

*Bradley J. Cross*  
OREGON  
JANUARY 15, 2002  
BRADLEY J. CROSS  
60051

RENEWS: 12/31/2013



PROJECT NUMBER: 2013007  
DATE OF DRAWING: JUNE 1, 2013  
DATE OF MONUMENTATION: APRIL 5, 2013  
HOOD RIVER COUNTY ASSESSORS MAP: 03N-10E-36AB

**COLUMBIA RIVER  
SURVEYING  
& MAPPING**

1767 12th St, #191  
HOOD RIVER, OREGON, 97031  
PHONE: 541-386-9002  
EMAIL: INFO@COLUMBIASURVEYING.COM

RECEIVED JUN 19 2013

CS 2013 023