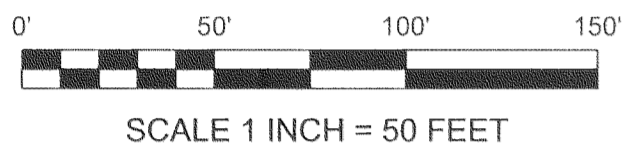
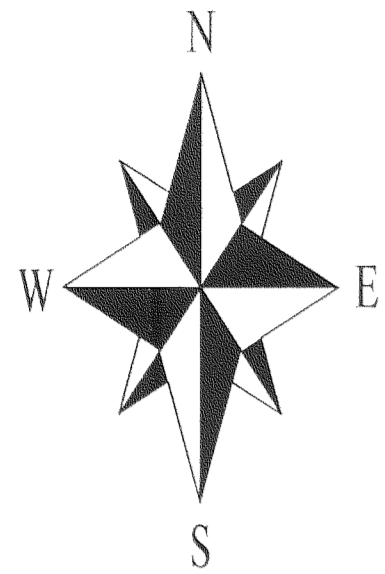


PROPERTY BOUNDARY SURVEY FOR CRESTLINE CONSTRUCTION
PORTION OF WATERFRONT BUSINESS PARK SUBDIVISION PLAT
 LOCATED IN THE NW 1/4 OF SECTION 25, TOWNSHIP 3 NORTH, RANGE 10 EAST W.M.,
 CITY OF HOOD RIVER, HOOD RIVER COUNTY, OREGON.

HOOD RIVER COUNTY
 SURVEYOR'S OFFICE
 Survey No: CS 2013 018
 Filed Date: 5.30.13
 By: [Signature]



NARRATIVE:

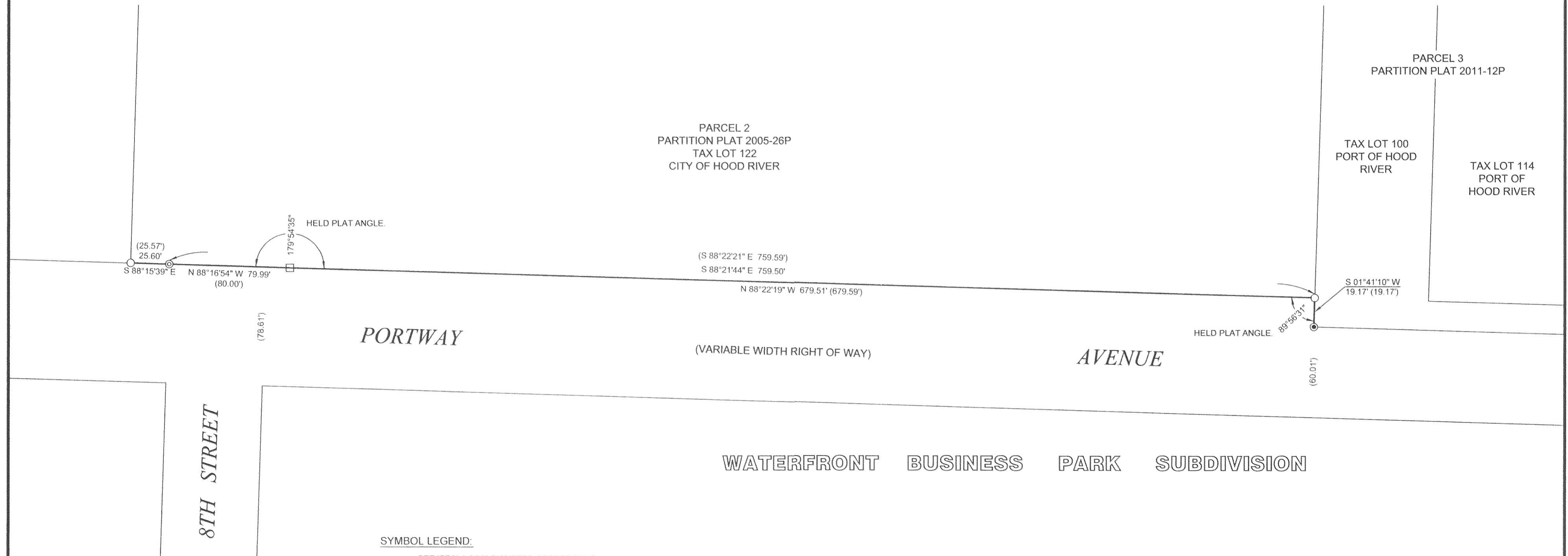
THE PURPOSE OF THIS SURVEY IS TO RESET A PROPERTY CORNER OF THE WATERFRONT BUSINESS PARK SUBDIVISION PLAT THAT WAS DESTROYED BY CONSTRUCTION OF A NEW SIDEWALK ALONG PORTWAY AVENUE. I FOUND THE MONUMENT AT THE SOUTHEAST CORNER OF PARCEL 2 OF PARTITION PLAT 2005-26P, SAID POINT ALSO BEING THE INITIAL POINT OF THE WATERFRONT BUSINESS PARK SUBDIVISION PARK PLAT. I ALSO FOUND A MONUMENT TO THE WEST ON THE SOUTHERLY LINE OF SAID PARCEL 2 SET BY C.S.#2008036. I HELD THE ANGLE POINT BETWEEN THESE TWO MONUMENTS CALCULATED AS PER THE SUBDIVISION PLAT AND THEN TURNED THE SUBDIVISION ANGLE AND DISTANCE FROM THE SOUTHEAST CORNER OF SAID PARCEL 2 TO POSITION THE NEW MONUMENT AT THE MISSING CORNER. NUMEROUS OTHER CORNER MONUMENTS FROM THE SUBDIVISION PLAT AND RECENT SURVEYS HAVE BEEN DESTROYED BY CONSTRUCTION.

REFERENCES:

SURVEYS FILED WITH HOOD RIVER COUNTY SURVEYORS OFFICE:
 PARTITION PLAT 2005-26P BY P.L.S. 1815, C.S.#2006002, FILED JANUARY 5, 2006.
 SURVEY FOR OREGON DEPARTMENT OF TRANSPORTATION BY P.L.S. 72306, C.S.#2008036, FILED MAY 1, 2008.
 WATERFRONT BUSINESS PARK SUBDIVISION PLAT BY P.L.S. 72306, C.S.#2009055, FILED NOVEMBER 12, 2009.
 PARTITION PLAT 2011-12P BY P.L.S. 72306, C.S.#2012004, FILED JANUARY 9, 2012.
 HOOD RIVER COUNTY ASSESSORS MAP 3N-10E-25, REVISED MAY 1, 2012.

BASIS OF BEARINGS:

N.A.D.83 (CORS96) (EPOCH 2002) OREGON STATE PLANE, NORTH ZONE.
 THE RELATIONSHIP BETWEEN THE BEARINGS OF THIS SURVEY AND MONUMENTS FOUND FROM C.S.#2008036 ALONG THE SOUTHERLY LINE OF PARCEL 2 OF PARTITION PLAT 2005-26P IS ALSO SHOWN.



SYMBOL LEGEND:

- SET "BP2" 1 5/32" DIAMETER COPPER PLUG INSCRIBED "CROSS PLS 60051"
- FOUND P.L.S. 1815 5/8" IRON ROD WITH RED PLASTIC CAP FROM PARTITION PLAT 2005-26P, C.S.#2006002.
- ⊙ FOUND P.L.S. 72306 5/8" IRON ROD WITH RED PLASTIC CAP FROM C.S.#2008036.
- CALCULATED CORNER - NOT FOUND OR SET
- (xx.xx') ORIGINAL DIMENSION FROM WATERFRONT BUSINESS PARK SUBDIVISION PLAT

REGISTERED
 PROFESSIONAL
 LAND SURVEYOR

 OREGON
 JANUARY 15, 2002
 BRADLEY J. CROSS
 60051

RENEWS: 12/31/2013

PROJECT NUMBER: 2013002
 DATE OF DRAWING: APRIL 29, 2013
 DATE OF MONUMENTATION: FEBRUARY 1, 2013
 HOOD RIVER COUNTY ASSESSORS MAP: 03N-10E-25

**COLUMBIA RIVER
 SURVEYING
 & MAPPING**

1767 12th St, #191
 HOOD RIVER, OREGON, 97031
 PHONE: 541-386-9002
 EMAIL: INFO@COLUMBIASURVEYING.COM

RECEIVED MAY - 3 2013

CS 2013 018