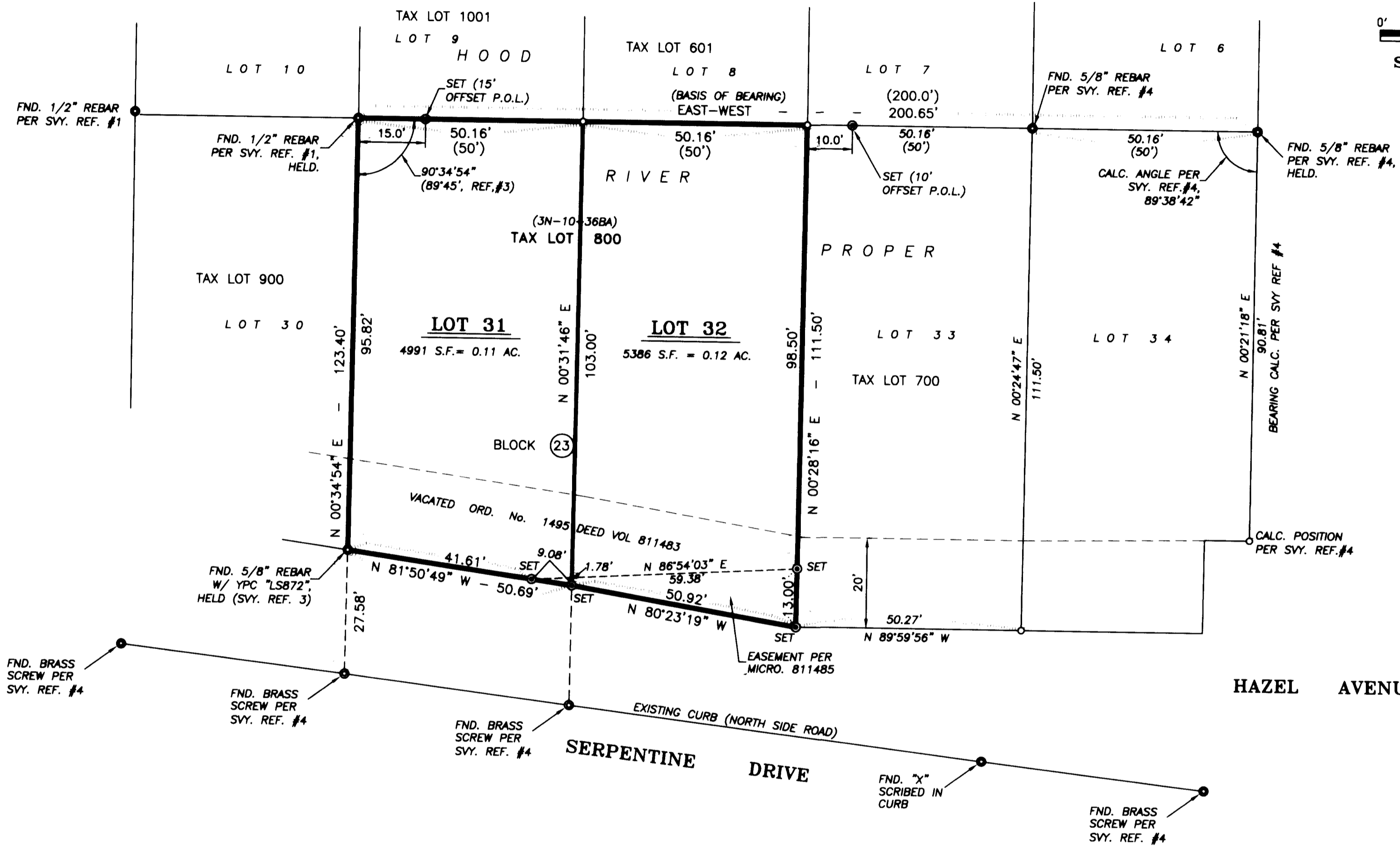


**NOTES:**

1. BEARINGS BASED ON ASSUMED EAST WEST LINE BETWEEN MONUMENTS FOUND AT THE NORTHWEST CORNER OF LOT 31 AND NORTHEAST CORNER OF LOT 34 OF BLOCK 23.
2. MONUMENTS SET ON SEPTEMBER 11, 2003.



**REFERENCES:**

- 1) JACK OLSON SURVEY OF LOTS 9 AND 10, BLOCK 23, HOOD RIVER PROPER BY TENNESON ENGINEERING CORP. W.O. #6134, FILED MARCH 1981 C.S. #81-018
- 2) ORIGINAL PLAT OF "HOOD RIVER PROPER"
- 3) DEPT. OF VETERANS AFFAIRS SURVEY OF LOTS 28 TO 30 H.R. PROPER BY TENNESON ENGINEERING CORP. W.O. #6366, JANUARY 14, 1983 C.S. #83-052
- 4) CITY OF HOOD RIVER SURVEY NORTH R/W SERPENTINE AVE. BY KLEIN & ASSOC. PLS 932 FILED AUGUST 27, 2003 C.S. #2003-059

**NARRATIVE:**

THE PURPOSE OF THIS SURVEY IS TO ESTABLISH AND MONUMENT THE EXTERIOR BOUNDARY OF TAX LOT 800 OF ASSESSOR'S MAP 3N-10-36BA. ALSO DESCRIBED AS LOTS 31 AND 32, BLOCK 23, HOOD RIVER PROPER, IN THE CITY OF HOOD RIVER, COUNTY OF HOOD RIVER, IN THE STATE OF OREGON, TOGETHER WITH THAT PORTION OF SERPENTINE DRIVE VACATED BY ORDINANCE NO. 1495. THE NORTH LINE OF THE SUBJECT PARCEL WAS ESTABLISHED BY HOLDING MONUMENTS FROM SURVEY REFERENCES #1 AND #4 AND PRORATING THE DISTANCE AS SHOWN. THE SOUTHWEST CORNER WAS ESTABLISHED BY HOLDING THE MONUMENT FOUND FROM SURVEY REFERENCE #3. THE SOUTHEAST CORNER OF LOT 31 WAS ESTABLISHED BY HOLDING THE BRASS SCREW FOR BEARING AND PLAT DISTANCE. THE EAST LOT LINE OF LOT 34 WAS ESTABLISHED PER SURVEY REFERENCE #4. THE EAST AND WEST LOT LINES OF LOT 33 WERE THEN ESTABLISHED BY PRORATING THE BEARING BETWEEN ESTABLISHED LINES. THE SOUTHEAST CORNER OF THE SUBJECT PARCEL WAS ESTABLISHED BY HOLDING PLAT DIMENSION, TOGETHER WITH THE VACATED PORTION OF SERPENTINE DRIVE BY ORDINANCE NO. 1495. MONUMENTS ON THE NORTH LINE WERE SET AT OFFSETS PER CLIENT'S REQUEST. MONUMENTS WERE ALSO SET AT EASEMENT CORNERS AS ESTABLISHED PER MICROFILM #811485 OF HOOD RIVER COUNTY RECORDS.

SET 5/8" X 30" REBAR WITH YELLOW PLASTIC CAP INSCRIBED "HUFFMON PLS 2786", AS SHOWN.

**LEGEND:**

- SET 5/8" X 30" REBAR WITH YELLOW PLASTIC CAP "HUFFMON PLS 2786"
- FOUND MONUMENTS, AS NOTED.
- CALCULATED CORNERS, NOT SET.
- SET HUB & TACK.
- SET P.K. NAIL OR AS NOTED.
- ⊙ SET BRASS SCREW AND WASHER, INSCRIBED "LS 2786"
- x- EXISTING FENCE LINE.

REGISTERED  
PROFESSIONAL  
LAND SURVEYOR

*Bradley R. Huffmon*

OREGON  
JANUARY 21, 1997  
BRADLEY R. HUFFMON  
2786

EXPIRES: 06/30/2013

Date	No.	Revisions	By	App.
SURVEY FOR <b>SCOTT WOOLUMS</b> TAX LOT 3N-10E-36BA 800 LOTS 31 & 32, BLOCK 23, HOOD RIVER PROPER IN THE NW.1/4, SECTION 36, TWP.3 N., RANGE 10 E. W.M. HOOD RIVER, HOOD RIVER COUNTY, OREGON				
<b>TENNESON ENGINEERING CORP.</b> CONSULTING ENGINEERS 3313 W. 2ND. STREET, Suite 100 THE DALLES, OREGON 97058 PH. 541-296-9177 FAX 541-296-6657				
Survey	Calculation	Design	Date	Scale
B.R.H.	B.B.B.		3/6/2013	1"=20'
Drawn	Drawing Number	Work Order No.	Sheet	
S.D.H.	K:\ACAD\10900\10940.dwg	10940	1 of 1	