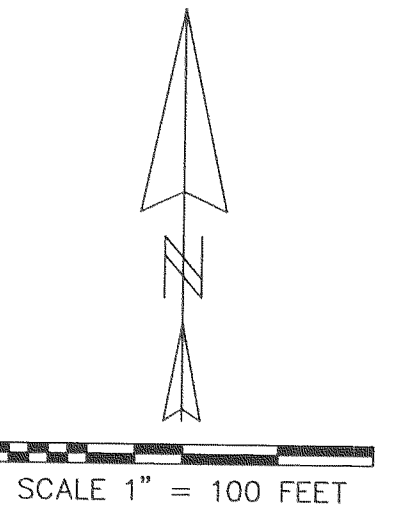
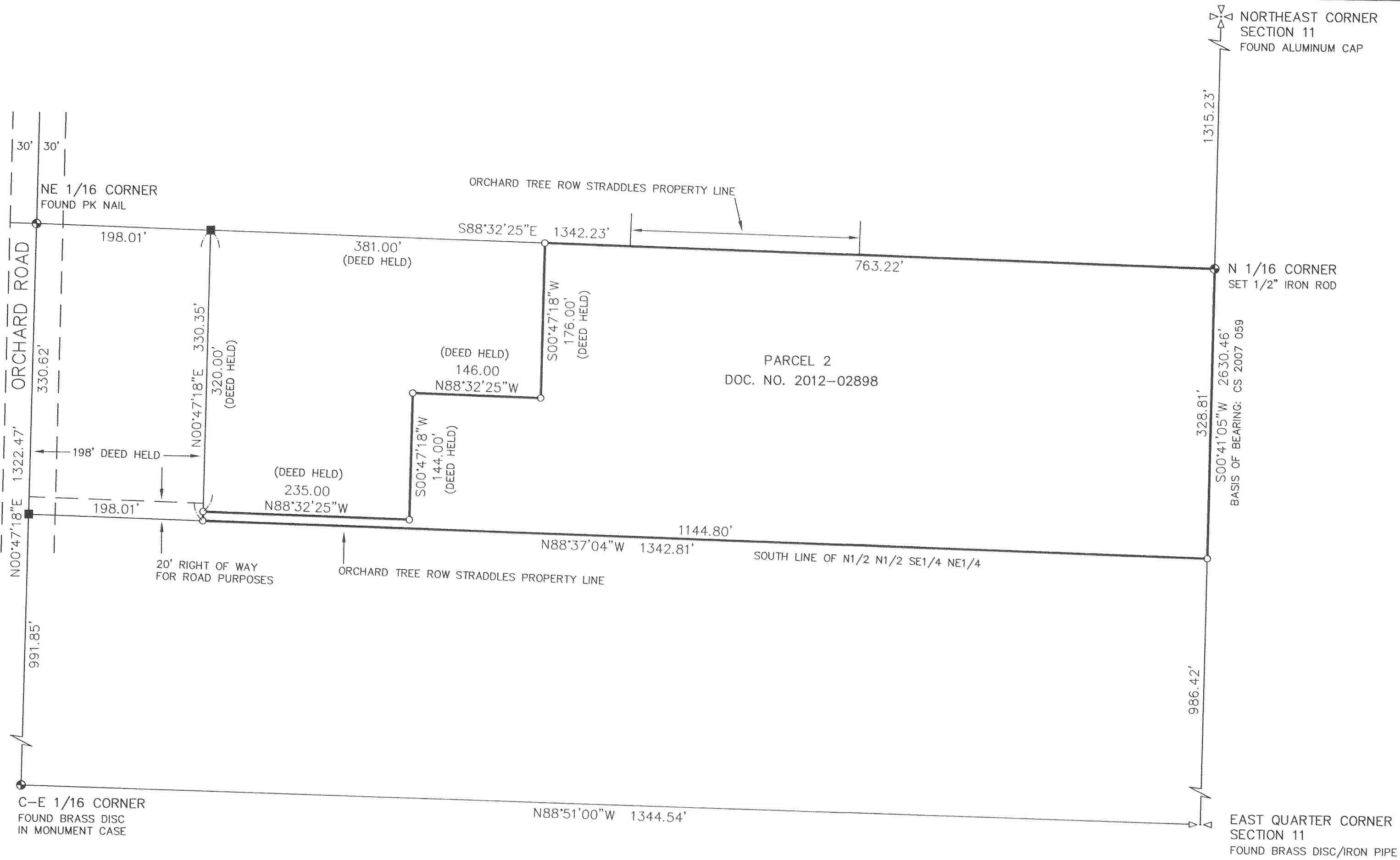


HOOD RIVER COUNTY  
 SURVEYOR'S OFFICE  
 SURVEY NO. *CS 2012 056*  
 FILED DATE: *12-21-12*  
 BY: *RJ*



REGISTERED  
 PROFESSIONAL  
 LAND SURVEYOR

*Kevin Dowd*

OREGON  
 JULY 26, 1989  
 KEVIN DOWD  
 2393  
 RENEW DATE: 12-31-13  
 NOVEMBER 20, 2012

**NARRATIVE**

THE PURPOSE OF THIS SURVEY IS TO ESTABLISH THE BOUNDARIES OF PARCEL 2 OF THOSE TRACTS OF LAND DESCRIBED IN DEED RECORDED AS DOC. NO. 2012-02898. THE DEED DESCRIPTION DESCRIBES AN ALIQUOT PART OF SECTION 11 EXCEPTING THEREFROM TWO TRACTS. MONUMENTS WERE RECOVERED AT THE NORTHEAST SECTION CORNER, EAST QUARTER CORNER, C-E 1/16 CORNER AND NE 1/16 CORNER TO ESTABLISH THE SOUTHEAST QUARTER OF THE NORTHEAST QUARTER OF SECTION 11. DEED CALLS WERE HELD TO ESTABLISH THE BOUNDARIES OF THE EXCEPTED TRACTS AS SHOWN.

DATE FIRST MONUMENT SET: NOVEMBER 2, 2012

**LEGEND**

- SET 1/2" X 30" IRON ROD WITH YELLOW PLASTIC CAP MARKED "WYEAST LS 2393"
- CALCULATED POSITION

**RECORD OF SURVEY**

LOCATED IN THE NORTHEAST QUARTER OF SECTION 11  
 T2 NORTH, R10 EAST, W.M.  
 HOOD RIVER COUNTY, OREGON

FOR: BOB BENTON

WYEAST SURVEYS  
 KEVIN DOWD  
 4399 WOODWORTH DR.  
 MT HOOD, OR 97041  
 (541) 352-6065