

PROPERTY BOUNDARY SURVEY
 PORTION OF LOT 1 OF BLOCK C, SOUTH WAUCOMA ADDITION
 LOCATED IN THE NW 1/4 OF THE NW 1/4 OF SECTION 36, TOWNSHIP 3 NORTH, RANGE 11 EAST W.M.,
 TAX LOT 2300, 03N-10E-36BB, CITY OF HOOD RIVER, OREGON.

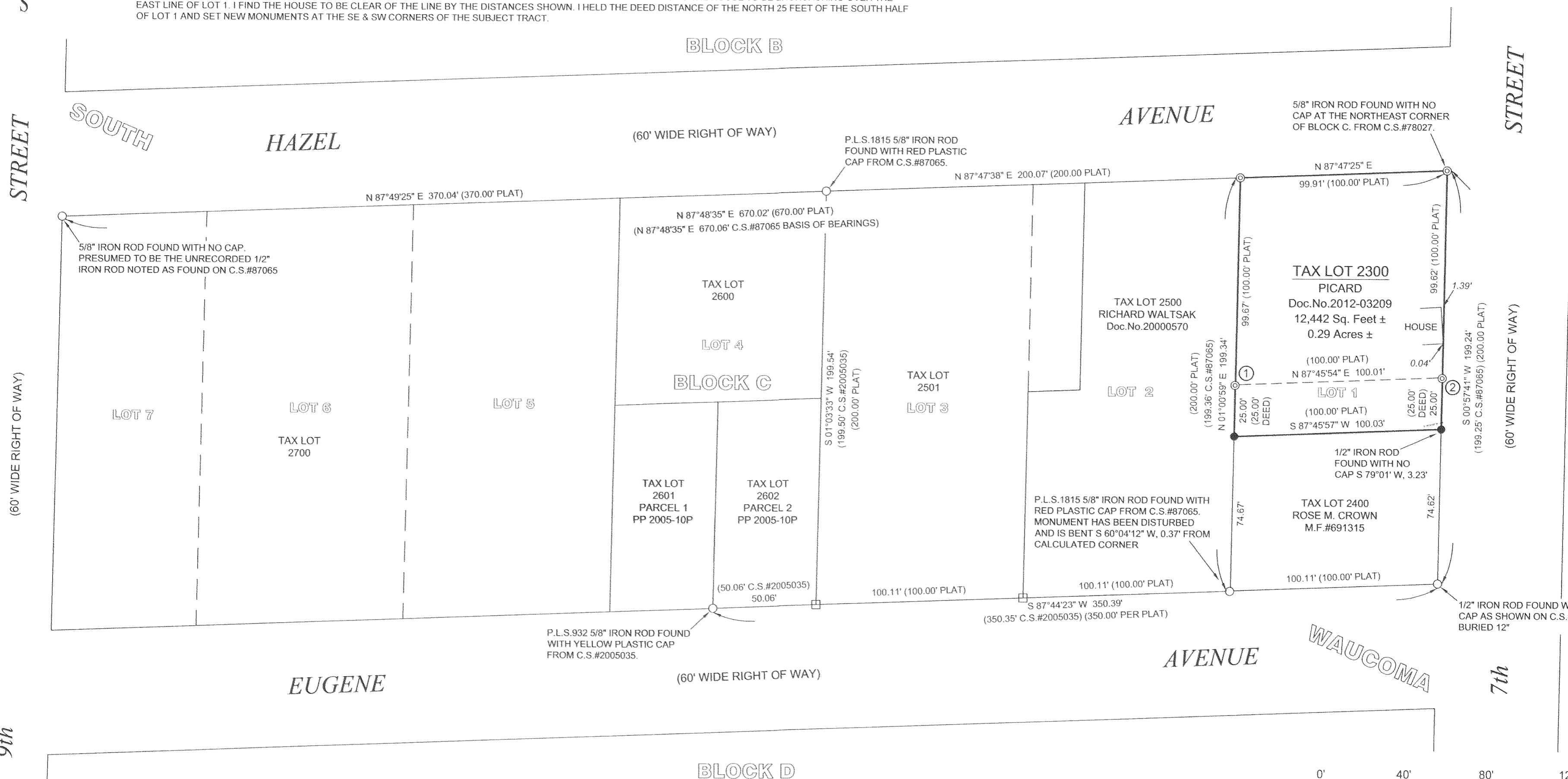
HOOD RIVER COUNTY
 SURVEYOR'S OFFICE
 Survey No: CS 2012 052
 Filed Date: 12.20.12
 By: [Signature]

NARRATIVE:

THE PURPOSE OF THIS SURVEY IS TO VERIFY AND MONUMENT THE BOUNDARIES OF TAX LOT 2300 DESCRIBED BY DEED DOCUMENT No 2012-03209 AS THE NORTH ONE-HALF OF LOT 1 AND THE NORTH 25 FEET OF THE SOUTH ONE-HALF OF LOT 1, SECTION C, SOUTH WAUCOMA. I FOUND AND ACCEPTED THE MONUMENTS AT THE NW, NE & SE CORNERS OF LOT 1 AS SHOWN ON C.S.#87065. THE MONUMENT FOUND AT THE SW CORNER OF LOT 1 HAS BEEN DISTURBED SLIGHTLY AS SHOWN. I CALCULATED THIS CORNER BY PROPORTIONING THE PLAT DISTANCES BETWEEN THE MONUMENT FOUND AT THE SE CORNER OF LOT 1 AND THE MONUMENT FOUND AT THE SW CORNER OF PARCEL 2 OF PARTITION PLAT 2005-10P. THE SW AND SE CORNERS OF THE NORTH HALF OF LOT 1 WERE SET BY C.S.#78027, HOWEVER I DID NOT ACCEPT THESE MONUMENTS AS THAT SURVEY DID NOT PROPORTION THE DISTANCES CORRECTLY AND THE MONUMENTS DO NOT APPEAR TO HAVE BEEN RELIED UPON FOR IMPROVEMENTS ALONG THE BOUNDARIES. C.S.#78027 ALSO SHOWS THE HOUSE TO BE ENCRUCHING OVER THE EAST LINE OF LOT 1. I FIND THE HOUSE TO BE CLEAR OF THE LINE BY THE DISTANCES SHOWN. I HELD THE DEED DISTANCE OF THE NORTH 25 FEET OF THE SOUTH HALF OF LOT 1 AND SET NEW MONUMENTS AT THE SE & SW CORNERS OF THE SUBJECT TRACT.

ADDITIONAL CORNER NOTES:

- 5/8" IRON ROD FOUND WITH NO CAP FROM C.S.#78027, S 25° 55' W, 0.35' FROM CALCULATED CORNER. ALSO FOUND 1/2" IRON PIPE N 36° 23' W, 0.69' FROM CALCULATED CORNER.
- 5/8" IRON ROD FOUND WITH NO CAP FROM C.S.#78027, S 14° 14' W, 0.34' FROM CALCULATED CORNER.



REFERENCES:

SURVEYS FILED WITH HOOD RIVER COUNTY SURVEYORS OFFICE:
 PLAT OF WAUCOMA PARK AND REPLAT OF SOUTH WAUCOMA ADDITION, FILED OCTOBER 3, 1900.
 PLAT OF SOUTH WAUCOMA, FILED APRIL 29, 1893.
 C.S.#78027, FILED MARCH 28, 1978.
 C.S.#87065, FILED OCTOBER 21, 1987.
 C.S.#89070, FILED AUGUST 22, 1989.
 C.S.#2001001, FILED JANUARY 11, 2001.
 C.S.#2005035, FILED MAY 10, 2005.

HOOD RIVER COUNTY DEED DOCUMENTS:
 BARGAIN AND SALE DEED, RECORDED SEPTEMBER 18, 2012, AS DOCUMENT No 2012-03209. (TAX LOT 2300).
 WARRANTY DEED, RECORDED FEBRUARY 18, 2000, AS DOCUMENT No.20000570. (TAX LOT 2500).
 WARRANTY DEED, DATED SEPTEMBER 8, 1969, AS MICROFILM No 691315. (TAX LOT 2400).

HOOD RIVER COUNTY ASSESSORS MAP 3N-10E-36BB, REVISED MARCH 30, 2011.

BASIS OF BEARINGS:

BETWEEN THE MONUMENTS FOUND AT THE NORTHWEST AND NORTHEAST CORNERS OF BLOCK C OF SOUTH WAUCOMA AS SHOWN ON C.S.#87065.

OWNERS:

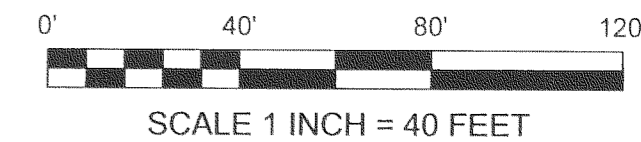
LAURENT AND MAY PICARD
 701 HAZEL AVENUE,
 HOOD RIVER, OR. 97031.

SYMBOL LEGEND:

- SET 5/8" BY 30" IRON ROD WITH BLUE PLASTIC CAP INSCRIBED "CROSS PLS 60051"
- ⊙ FOUND 5/8" IRON ROD WITH NO CAP FROM C.S.#78027.
- FOUND MONUMENT AS NOTED.
- CALCULATED CORNER - NOT FOUND OR SET
- (50.00') PREVIOUS SURVEY DISTANCE AS NOTED
- 5.00' BUILDING OFFSET TO PROPERTY LINE

REGISTERED
 PROFESSIONAL
 LAND SURVEYOR

 OREGON
 JANUARY 15, 2002
 BRADLEY J. CROSS
 60051
 RENEWS: 12/31/2013



PROJECT NUMBER: 2012032.
 DATE OF DRAWING: NOVEMBER 11, 2012.
 DATE OF MONUMENTATION: OCTOBER 23, 2012.
 HOOD RIVER COUNTY ASSESSORS MAP: 03N-11E-36BB.

**COLUMBIA RIVER
 SURVEYING
 & MAPPING**

1767 12th St. #191
 HOOD RIVER, OREGON, 97031
 PHONE: 541-386-9002
 EMAIL: INFO@COLUMBIASURVEYING.COM

RECEIVED NOV 15 2012

CS 2012 052