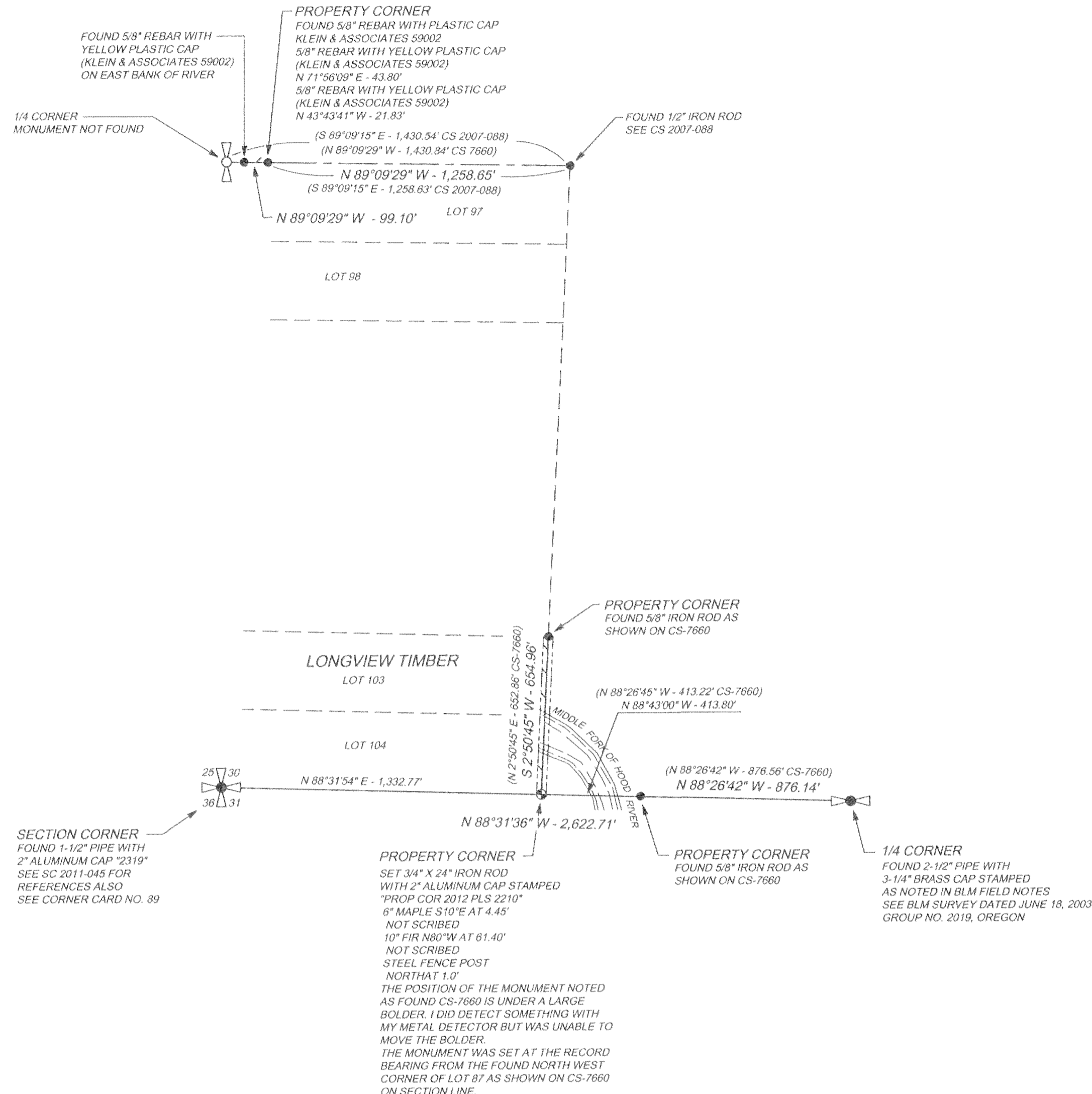
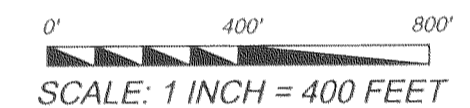


RECORD OF SURVEY
 FOR
 LONGVIEW TIMBER
 IN THE W 1/2 OF THE SW 1/4 OF
 SECTION 30, T 1 N, R 10 E, W.M.
 HOOD RIVER COUNTY, OREGON

AUGUST 13, 2012



BASIS OF BEARING
 SOUTH LINE OF LOT 88 CS-7660
 THE SOUTH 1/4 CORNER TO THE
 FOUND 5/8" IRON ROD AT APEX OF HILL



NARRATIVE

THE PURPOSE OF THIS SURVEY WAS TO ESTABLISH THE EAST LINE OF LOTS 103 AND 104 AND THE NORTH LINE OF LOT 97 OF WOODWORTH ACRES LYING EAST OF THE APEX OF THE BLUFF AS DESCRIBED IN DEED NUMBER 2007-02460, PARCEL 52. THE EAST LINE OF LOTS 103 AND 104 WAS LOCATED BY TENNESON ENGINEERING CORP. IN SURVEY DATED 8/17/76 FOR LYLE S. McALEIANDER, CS-7660. THIS SURVEY HELD THE FOUND MONUMENTS SET BY TENNESON TO ESTABLISH THE SOUTH EAST CORNER OF LOT 104 COVERED BY FLOOD. THE NORTH LINE OF LOT 97 WAS ESTABLISHED BY KLEIN AND ASSOCIATES IN SURVEY FILED 6/18/09, CS-2009-026-1. THIS SURVEY HELD FOUND MONUMENTS AS NOTED ON THE KLEIN SURVEY. NOTE: THE PLAT OF WOODWORTH ACRES SHOWS A DEDICATED ROAD ALONG THE EAST LINE OF LOTS 103 AND 104 HAVING A WIDTH OF 40 FEET.

LEGEND

- 1/4 CORNER FOUND AS NOTED
- FOUND MONUMENT AS NOTED
- LINE MARKED WITH 1/2" X 6" FIBER GLASS RODS SET ON LINE. PINK AND BLUE FLAGGING BETWEEN RODS TREES ALONG LINE PAINTED WITH BLUE PAINT.

NOTE: REFERENCES HAVE YELLOW LOCATION TAGS ABOVE SCRIBE AND A 6" SPIKE AT BASE OF SCRIBE. ALL ORIENTED TOWARD MONUMENT. BEARINGS TO REFERENCES TAKEN WITH HAND COMPASS HAVING A DECLINATION OF 16° EAST. DISTANCES MEASURED TO SPIKE. UNLESS NOTED OTHER WISE.

THIS MAP CORRECTLY REPRESENTS A SURVEY MADE BY ME OR UNDER MY DIRECTION AT THE REQUEST OF LONGVIEW TIMBER CORP. IN MAY 2011.

GEORGE J. FORD, PLS
 CERTIFICATE NO. 2210

REGISTERED
 PROFESSIONAL
 LAND SURVEYOR

George J. Ford
 NOV 5, 2012

OREGON
 JULY 17, 1986
 GEORGE J. FORD
 #2210
 EXP: 12/31/2013

PO BOX 353
 KLICKITAT, WA 98628
 (509) 369-1014