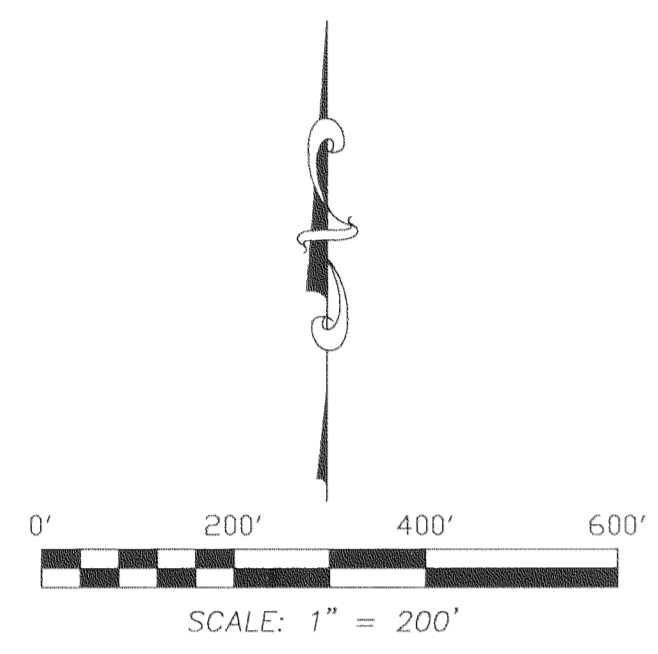
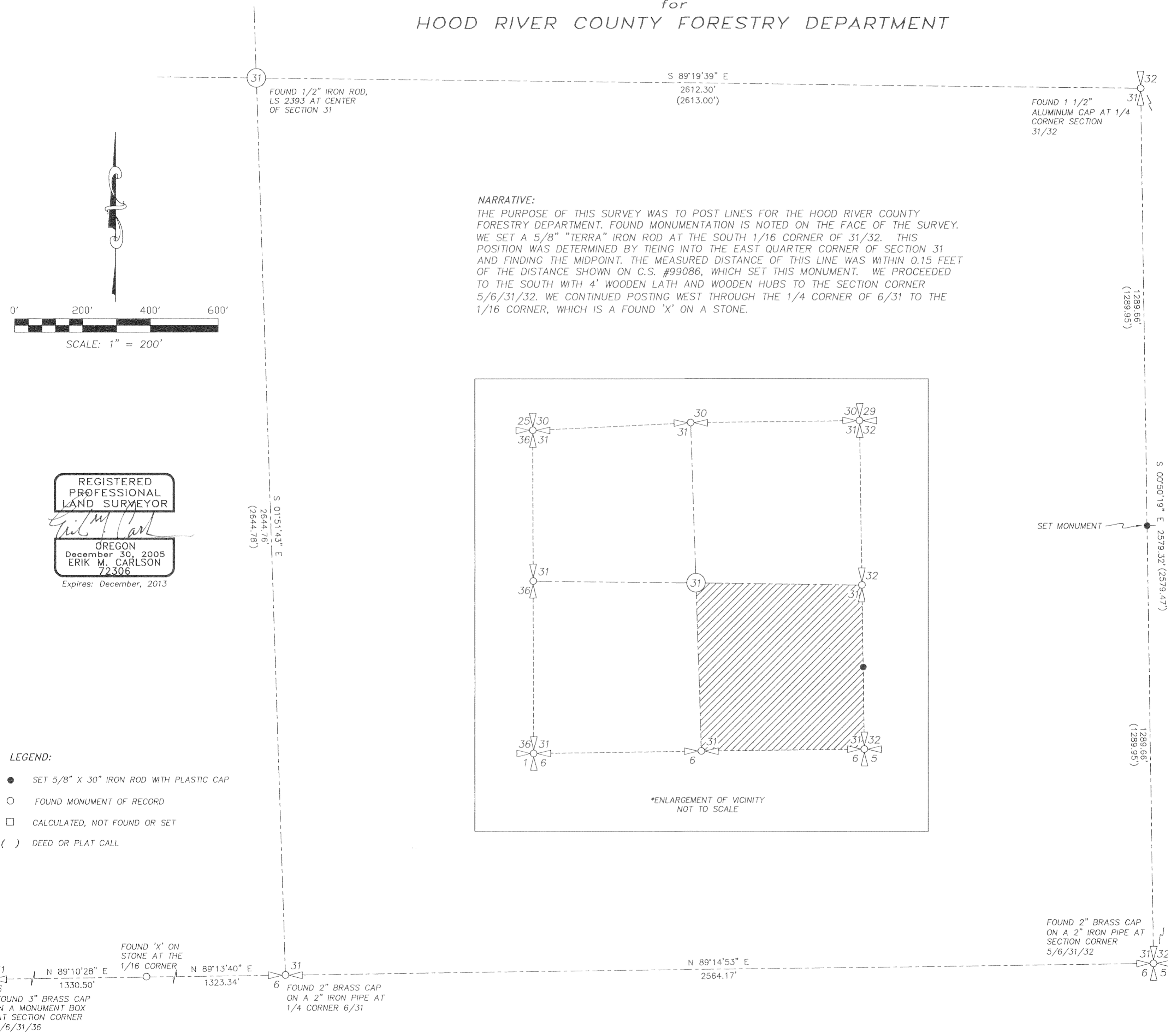


TERRA SURVEYING  
 BOUNDARY LINE SURVEY  
 for  
 HOOD RIVER COUNTY FORESTRY DEPARTMENT

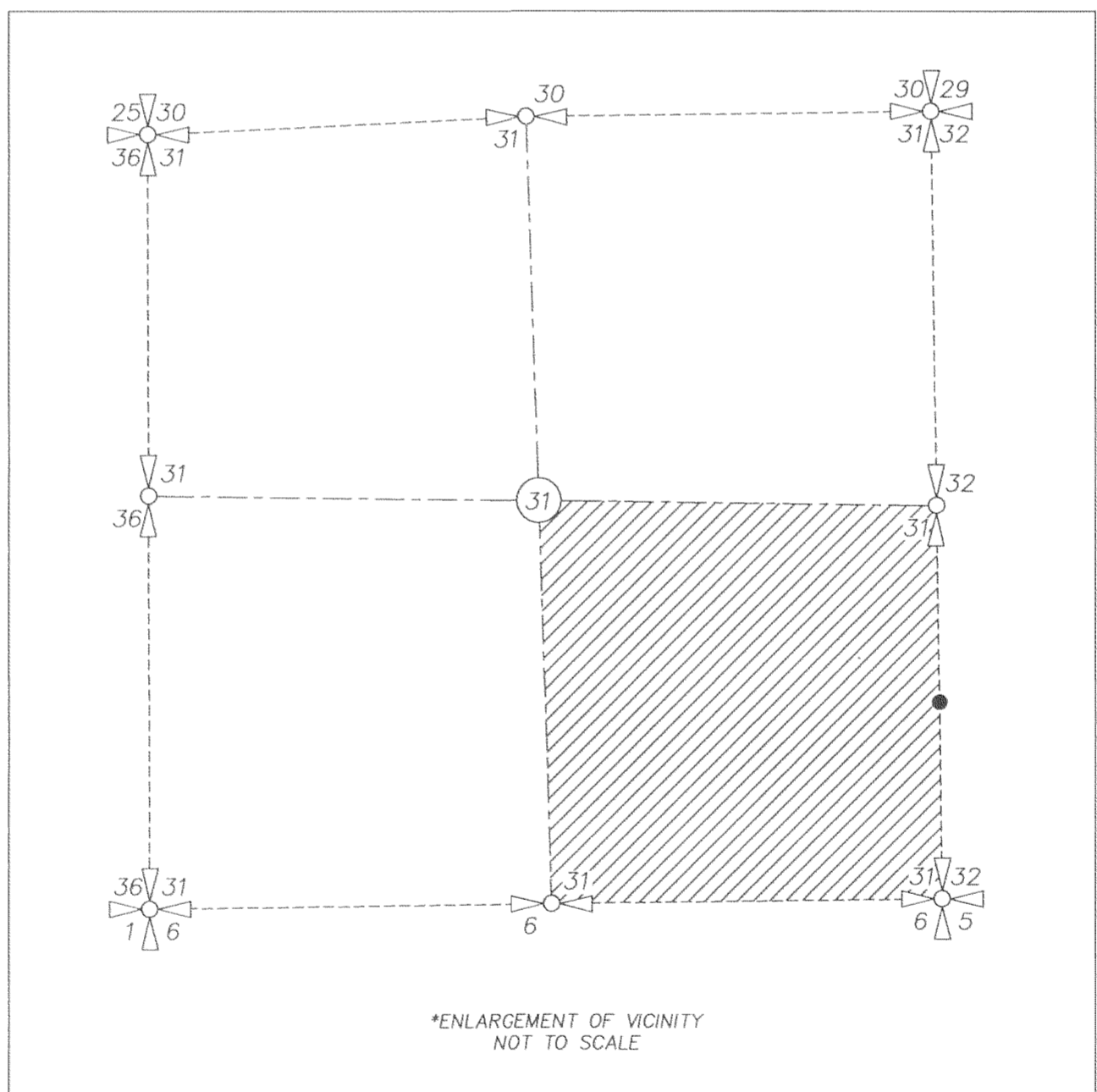
HOOD RIVER COUNTY  
 SURVEYOR'S OFFICE  
 CS# 2012 036  
 DATE FILED: 9-11-12  
 BY: *[Signature]*



REGISTERED  
 PROFESSIONAL  
 LAND SURVEYOR  
*[Signature]*  
 OREGON  
 December 30, 2005  
 ERIK M. CARLSON  
 72306  
 Expires: December, 2013

- LEGEND:**
- SET 5/8" X 30" IRON ROD WITH PLASTIC CAP
  - FOUND MONUMENT OF RECORD
  - CALCULATED, NOT FOUND OR SET
  - ( ) DEED OR PLAT CALL

**NARRATIVE:**  
 THE PURPOSE OF THIS SURVEY WAS TO POST LINES FOR THE HOOD RIVER COUNTY FORESTRY DEPARTMENT. FOUND MONUMENTATION IS NOTED ON THE FACE OF THE SURVEY. WE SET A 5/8" "TERRA" IRON ROD AT THE SOUTH 1/16 CORNER OF 31/32. THIS POSITION WAS DETERMINED BY TIEING INTO THE EAST QUARTER CORNER OF SECTION 31 AND FINDING THE MIDPOINT. THE MEASURED DISTANCE OF THIS LINE WAS WITHIN 0.15 FEET OF THE DISTANCE SHOWN ON C.S. #99086, WHICH SET THIS MONUMENT. WE PROCEEDED TO THE SOUTH WITH 4' WOODEN LATH AND WOODEN HUBS TO THE SECTION CORNER 5/6/31/32. WE CONTINUED POSTING WEST THROUGH THE 1/4 CORNER OF 6/31 TO THE 1/16 CORNER, WHICH IS A FOUND 'X' ON A STONE.



**LOCATION OF SURVEY:**  
 LAND LOCATED IN THE SOUTHEAST QUARTER OF SECTION 31, TOWNSHIP 2 NORTH, RANGE 10 EAST, WILLAMETTE MERIDIAN, HOOD RIVER COUNTY, OREGON.

**REFERENCES:**  
 HOOD RIVER COUNTY SURVEY No. 83079  
 HOOD RIVER COUNTY SURVEY No. 99086  
 HOOD RIVER COUNTY SURVEY No. 2008037

**BASIS OF BEARING:**  
 HOOD RIVER COUNTY SURVEY No. 99086

**TERRA SURVEYING**

DATE: AUGUST 20, 2012  
 SCALE: 1" = 200'  
 PROJECT: 12068  
 ASSESSORS MAP: 2N-10E-31  
 P.O. BOX 617  
 HOOD RIVER, OREGON 97031  
 PHONE & FAX: (541) 386-4531  
 E-Mail: terra@gorge.net  
 www.terralandsurveying.com