

A REPLAT OF LOTS 13, 14 & 15, VILLAGE AT RAND HILL P.U.D.

LOCATED IN THE SE 1/4 OF THE SW 1/4 OF SECTION 26, TOWNSHIP 3 NORTH, RANGE 10 EAST W.M.,
CITY OF HOOD RIVER, HOOD RIVER COUNTY, OREGON.

MARCH 28, 2012.

HOOD RIVER COUNTY
SURVEYOR'S OFFICE

Survey No: CS2012 019

Filed Date: 6/20/12

By: [Signature]

RECORDING INFORMATION:

PARTITION PLAT No. 2012 02P

instrument received on the 8th
day of JUNE, 2012

at 11:16 A.M.

Hood River County Director of Records and Assessments.



NARRATIVE:

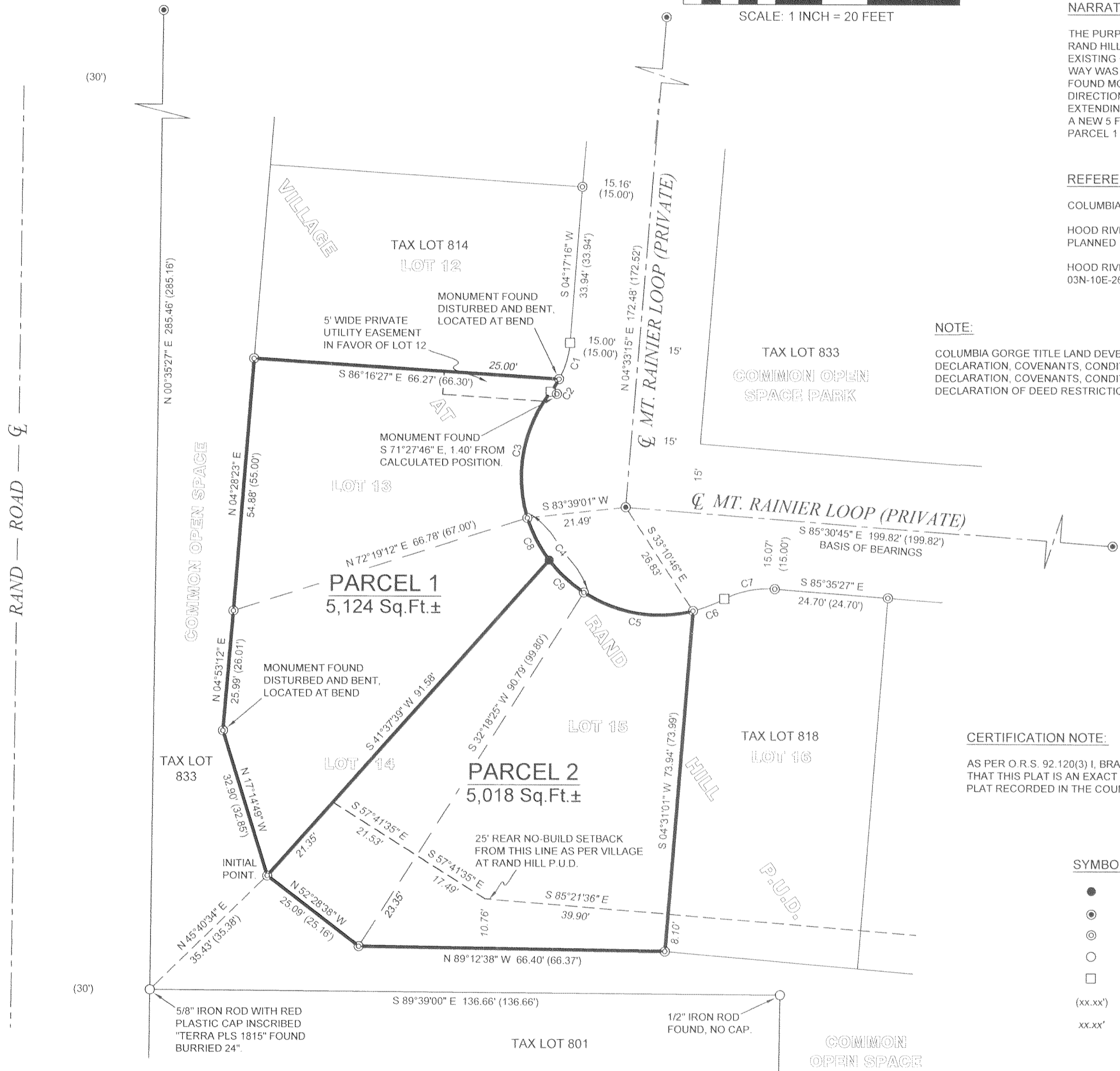
THE PURPOSE OF THIS PARTITION PLAT IS TO CREATE TWO PARCELS FROM LOTS 13, 14 AND 15 OF THE VILLAGE AT RAND HILL P.U.D. EXISTING CORNER MONUMENTS WERE FOUND AT ALL CORNER OF THE ORIGINAL LOTS. THE CURVED RIGHT OF WAY WAS DEFINED BY HOLDING THE ORIGINAL RADIUS DIMENSION AND FITTING THE ARC BETWEEN ADJACENT FOUND MONUMENTS. THE MONUMENT FOUND NEAR THE NORTHEAST CORNER OF LOT 13 AT THE CHANGE IN ARC DIRECTION WAS NOT ACCEPTED AS IT APPEARS TO HAVE BEEN MOVED. THIS POINT WAS CALCULATED BY EXTENDING THE 20 FOOT RADIUS ARC THROUGH THE MONUMENT FOUND AT THE NORTHEAST CORNER OF LOT 13. A NEW 5 FOOT WIDE UTILITY EASEMENT IS BEING CREATED IN FAVOR OF LOT 12 AT THE NORTHEAST CORNER OF PARCEL 1 AS SHOWN.

REFERENCES:

- COLUMBIA GORGE TITLE LAND DEVELOPMENT REPORT, ORDER No.12-0006JS, DATED JANUARY 9, 2012.
- HOOD RIVER COUNTY SURVEYORS OFFICE, PLANNED UNIT DEVELOPMENT (P.U.D.) FOR VILLAGE AT RAND HILL P.U.D., FILED MAY 30, 2007 AS C.S.#2007065
- HOOD RIVER COUNTY ASSESSORS MAP, 03N-10E-26CD, REVISED MARCH 31, 2009.

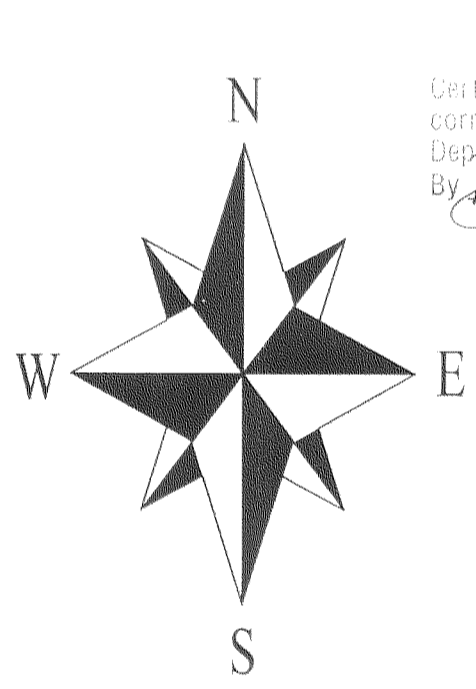
NOTE:

COLUMBIA GORGE TITLE LAND DEVELOPMENT REPORT, ORDER No.12-0006JS, DATED JANUARY 9, 2012, SHOWS GENERAL EXCEPTIONS INCLUDING: DECLARATION, COVENANTS, CONDITIONS, RESTRICTIONS AND OR EASEMENTS, RECORDED NOVEMBER 14, 2005, AS DOCUMENT No.20055868. DECLARATION, COVENANTS, CONDITIONS, RESTRICTIONS AND OR EASEMENTS, RECORDED MAY 24, 2007, AS DOCUMENT No.200702336. DECLARATION OF DEED RESTRICTIONS/RESTRICTIVE COVENANT AND REMONSTRANCE, RECORDED DECEMBER 4, 2007, AS DOCUMENT No.200705305.



CERTIFICATION NOTE:

AS PER O.R.S. 92.120(3) I, BRADLEY J. CROSS, CERTIFY THAT THIS PLAT IS AN EXACT COPY OF THE ORIGINAL PLAT RECORDED IN THE COUNTY RECORDERS OFFICE.



JUN 11 2012

Certified to be a true and correct copy of the ORIGINAL
Dept. of Records & Assessment
By [Signature] Deputy
Dawn Fitchen

BASIS OF BEARINGS:
VILLAGE AT RAND HILL P.U.D., FILED AS C.S.#2007065.

SYMBOL LEGEND:

- SET 5/8" X 30" IRON ROD WITH BLUE PLASTIC CAP STAMPED "CROSS P.L.S. 60051"
- ⊙ FOUND 1 1/2" ALUMINUM CAP IN PAVEMENT INSCRIBED TERRA PLS 72306 AS PER VILLAGE AT RAND HILL P.U.D.
- ⊙ FOUND 5/8" IRON ROD WITH RED PLASTIC CAP INSCRIBED TERRA PLS 72306 AS PER VILLAGE AT RAND HILL P.U.D.
- FOUND MONUMENT OF RECORD AS NOTED
- CALCULATED CORNER, NOT FOUND OR SET
- (xx.xx') VILLAGE AT RAND HILL P.U.D. DIMENSION
- xx.xx' EASEMENT DIMENSION

CURVE TABLE:

CURVE	RADIUS	ARC LENGTH	CHORD BEARING	CHORD LENGTH	DELTA ANGLE
C1	20.00' (20.00')	8.29' (8.32')	S 16°39'30" W	8.23' (8.26')	23°44'56"
C2	20.00' (20.00')	3.29' (3.26')	S 33°14'56" W	3.29' (3.26')	9°25'57"
C3	30.00' (30.00')	28.93' (28.84')	S 10°18'46" W	27.83' (27.74')	55°15'40"
C4	30.00' (30.00')	20.73' (20.65')	S 37°24'30" E	20.32' (20.24')	39°35'29"
C5	30.00' (30.00')	24.71' (24.73')	S 80°33'29" E	24.02' (24.04')	47°11'40"
C6	30.00' (30.00')	7.29' (7.30')	N 68°53'07" E	7.27' (7.28')	13°55'08"
C7	20.00' (20.00')	11.30' (11.32')	N 78°43'45" E	11.15' (11.17')	32°21'45"
C8	30.00'	10.35'	S 27°29'57" E	10.30'	19°46'23"
C9	30.00'	10.38'	S 47°17'42" E	10.33'	19°49'06"

REGISTERED
PROFESSIONAL
LAND SURVEYOR

[Signature]

OREGON
JANUARY 15, 2002
BRADLEY J. CROSS
60051

RENEWAL DATE: 12/31/2013

PROJECT NUMBER: 2011023.
DATE OF SURVEY MONUMENTATION: MARCH 28, 2012.
DATE OF DRAWING: MAY 21, 2012.
HOOD RIVER COUNTY ASSESSORS MAP: 03N-10E-26CD.

**COLUMBIA RIVER
SURVEYING
& MAPPING**

1767 12th STREET, #191
HOOD RIVER, OREGON, 97031
PHONE: 541-386-9002
EMAIL: INFO@COLUMBIASURVEYING.COM

APPROVALS:

I hereby certify that all taxes and assessments due hereon have been fully paid as required by law.

[Signature]
Hood River County Treasurer.

I hereby certify this partition was examined and approved as of this 7th day of June, 2012.

[Signature]
Hood River County Surveyor.

I hereby certify this partition was examined and approved as of this 7th day of JUNE, 2012.

[Signature]
City of Hood River Planning Director.