

# RECORD OF SURVEY

LOCATED IN THE  
NW 1/4 SECTION 5 AND NE 1/4 SECTION 6  
T. 2 N. R. 10 E. W.M.  
COUNTY OF HOOD RIVER, STATE OF OREGON

HOOD RIVER COUNTY  
SURVEYOR'S OFFICE

SURVEY NO. CS 2012017

FILED 6/20/12

BY RJ

TOWNSHIP 3 NORTH  
TOWNSHIP 2 NORTH

BASIS OF BEARING  
S89°39'07"E  
1322.10'R1  
1322.50'FD

FOUND 2" IRON PIPE W/BRASS CAP  
HOOD RIVER COUNTY  
BRASS CAP

W 1/16 CORNER  
PER BISHOP SURVEY  
CS NO. 78035

## LEGEND

- SET 5/8" IR W/YELLOW PLASTIC CAP (KLEIN ASSOC. LS 59002)
- FOUND 5/8" REBAR NO CAP BISHOP (CS 78035)
- ⊙ FOUND 1/2" WITH YELLOW CAP CRON (CS 84060)
- ⊗ FOUND 5/8" REBAR WITH YELLOW CAP ARNOLD (CS 90057)
- FOUND 5/8" REBAR WITH YELLOW CAP ARNOLD (CS 99099)
- ANGLE POINT, NOT MONUMENTED

- CS COUNTY SURVEY
- BOUNDARY LINE STAKED BLAZED AND FLAGGED
- - - EXISTING TAX LOT LINE
- x - EXISTING FENCE LINE

## NARRATIVE

THE PURPOSE OF THIS SURVEY IS TO SURVEY, BLAZE AND MARK THE HOOD RIVER COUNTY FORESTRY OWNERSHIP LINES AS SHOWN ON THIS SURVEY.

THE NORTHWEST SECTION CORNER OF SECTION 5 AND AN IRON ROD FOUND AT THE NORTHEAST CORNER OF THE NORTHWEST OF THE NORTHWEST QUARTER BEING THE WEST 1/16 CORNER, AS SHOWN A SURVEY BY BISHOP FILED AS SURVEY NO. 78035 WERE USED AS THE BASIS OF BEARING FOR THIS SURVEY.

DURING THE COURSE OF THIS SURVEY TWO CORNERS WERE FOUND REPRESENTING THE CENTER WEST 1/16 CORNER OF SECTION 5.

THE FIRST CORNER WAS ESTABLISHED BY BISHOP SURVEYING IN COUNTY SURVEY NO. 78035. IN SAID SURVEY NO. 78035 BISHOP BROKE DOWN SECTION 5. BISHOP DID NOT FIND THE WEST 1/4 CORNER OF SECTION 5. BISHOP COMPUTED THE POSITION OF THE WEST 1/4 CORNER OF SECTION 5 BY A SINGLE PROPORTION. AFTER BISHOP COMPUTED THE WEST 1/4 CORNER, BISHOP THEN COMPUTED THE CENTER WEST 1/16 CORNER AND SET A 5/8" REBAR FOR THE CENTER WEST 1/16 CORNER.

THE SECOND CORNER FOUND WAS ESTABLISHED BY CRON (DLC SURVEYING) IN COUNTY SURVEY NO. 84060. IN SAID SURVEY NO. 84060 CRON FOUND ORIGINAL BEARING TREE EVIDENCE OF THE WEST 1/4 CORNER OF SECTION 5. CRON RECOMPUTED THE POSITION OF THE CENTER WEST 1/16 CORNER AND SET A 1/2" REBAR MONUMENT FOR THE CENTER WEST 1/16 CORNER.

THIS SURVEY IS HOLDING THE CENTER WEST 1/16 CORNER MONUMENT ESTABLISHED BY CRON IN SURVEY NO. 84060 AND NOT THE MONUMENT ESTABLISHED BY BISHOP IN COUNTY SURVEY NO. 78035.

THIS SURVEY ALSO ESTABLISHED A NEW CORNER MONUMENT BETWEEN TAX PARCEL 101 AND 102 OF TAX MAP NO. 02N 10E 05 ON THE TRUE 1/16 LINE AS SHOWN ON THIS SURVEY.

AT THE WEST 1/4 CORNER WE DISCOVERED THE CORNER TO BE OBLITERATED. THE CORNER MARKER WAS FOUND LYING ON ITS SIDE NEXT TO AN UPROOTED TREE. THE BEARING TREES WERE ALSO FOUND TO BE UPROOTED AND NOT USABLE FOR ESTABLISHING THE CORNER POSITION.

THIS SURVEY COMPUTED THE POSITION OF THE WEST 1/4 CORNER BY USING A DISTANCE - DISTANCE METHOD FROM THE NORTHWEST CORNER OF SECTION 5 AND THE CENTER WEST 1/16 CORNER OF SECTION 5 AS ESTABLISHED BY CRON IN COUNTY SURVEY NO. 84060.

AT THE NORTH 1/16 CORNER COMMON TO SECTION 5 AND 6, A HOOD RIVER COUNTY SURVEY MONUMENT WAS FOUND AND HELD. SAID MONUMENT DID NOT MATCH THE RECORD DISTANCE FROM MONUMENT FOUND 1687 FEET WEST AS PER SURVEY NO. 99099. SAID NORTH 1/16 CORNER WAS NOT HELD FOR THE DISTANCE-DISTANCE INTERSECTION CALCULATION OF THE WEST 1/16 CORNER OF SECTION 5.

THIS SURVEY HELD THE FOUND MONUMENT AT THE NORTH 1/16 CORNER COMMON TO SECTION 5 AND 6 FOR THE PURPOSES OF FLAGGING AND BLAZING THE LINES.

## REFERENCED DEEDS

WARRANTY DEED INSTRUMENT NO. 20037575  
WARRANTY DEED INSTRUMENT NO. 831651

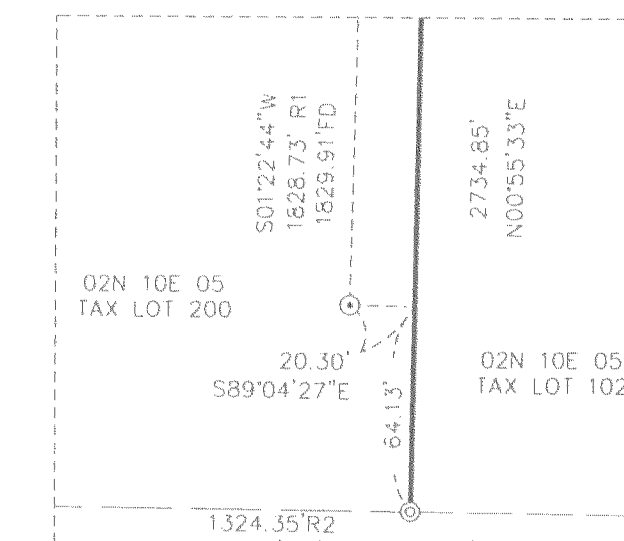
## REFERENCED SURVEYS

R1 = SURVEY BY BISHOP SURVEYING CS NO. 78035  
R2 = SURVEY BY D.L.C. SURVEYING CS NO. 84060  
R3 = SURVEY BY HOOD RIVER COUNTY CS NO. 99099  
R4 = SURVEY BY HOOD RIVER COUNTY CS NO. 90057

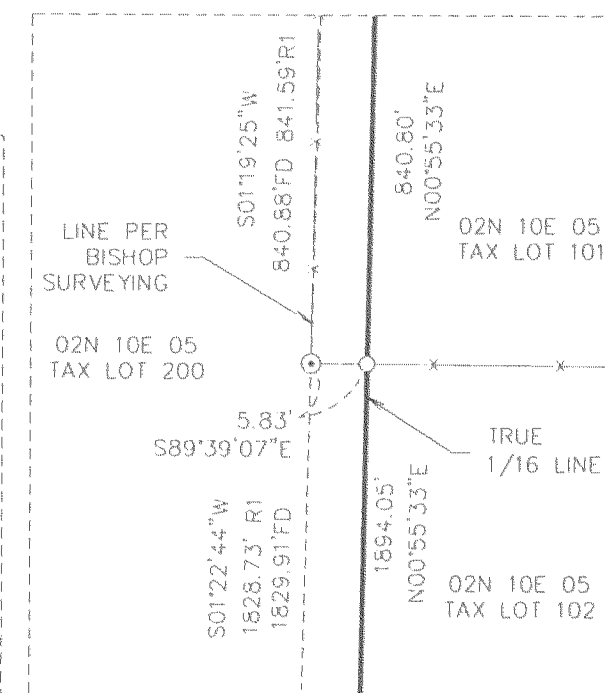
### DETAIL 2

02N 10E 05  
TAX LOT 101

02N 10E 05  
TAX LOT 102



DETAIL 1  
SCALE - 1"=60'



DETAIL 2  
SCALE - 1"=20'

### DETAIL 4

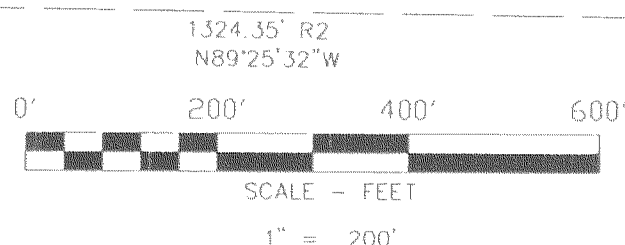
COMPUTED SECTION LINE  
PER CS 99099

### DETAIL 3

COMPUTED POSITION  
OF 1/4 CORNER  
COMPUTED BY DISTANCE-DISTANCE INTERSECT  
(SEE NARRATIVE)

## BASIS OF BEARINGS

COUNTY SURVEY NO. 78035



**Klein & Associates, Inc.**  
ENGINEERING • LAND SURVEYING • PLANNING

SURVEY PERFORMED FOR:  
HOOD RIVER COUNTY FORESTRY  
DATE OF MONUMENTATION  
APRIL 26, 2012  
PROJECT: 12-03-14  
FILE: 120314CS.DWG  
DRAFT: ADS

1411 13th Street, Hood River, Oregon 97031

Tel: (541)386-3322  
EMAIL info@kleinassocinc.com

## OWNER

HOOD RIVER COUNTY

REGISTERED  
PROFESSIONAL  
LAND SURVEYOR

*James M. Klein*  
OREGON  
JULY 12, 2005  
JAMES M. KLEIN  
59002

Expires 6-30-2013

SHEET 1 OF 1

WILLAMETTE MERIDIAN  
HOOD RIVER COUNTY, OREGON

1/4	SEC	T.	R.
<input checked="" type="checkbox"/>	5	2N.	10E.
<input checked="" type="checkbox"/>	6	2N.	10E.

KLEIN & ASSOCIATES, MAKES NO WARRANTY AS TO MATTERS OF UNWRITTEN TITLE, ADVERSE POSSESSION, ESTOPPEL, ACQUIESCENCE.

RECEIVED JUN - 1 2012

CS 2012 017