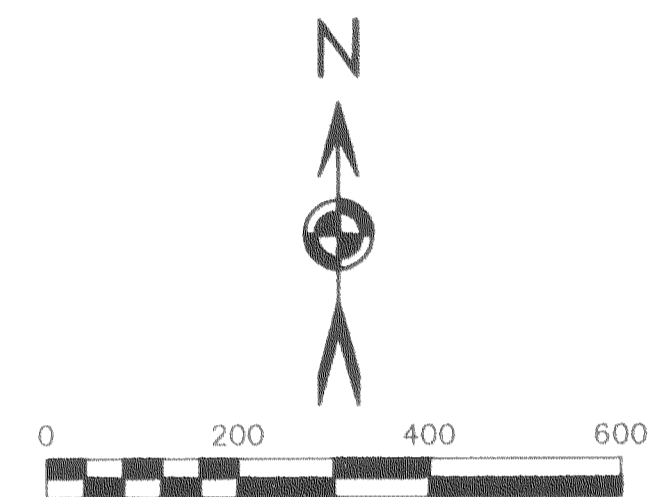


HOOD RIVER COUNTY SURVEYOR
 CS NUMBER: 2012 016
 DATE FILED: 6-20-12
 BY: RJ

RECORD OF SURVEY
 IN A PORTION OF THE
 NE 1/4 OF SECTION 24,
 T1N, R9E, W.M.,
 HOOD RIVER COUNTY, OREGON
 DATE: APRIL 11, 2012



BASIS OF BEARINGS: N 86°59'52" E ALONG THE
 NORTH LINE OF THE N.E. QUARTER OF SECTION
 24 BETWEEN MONUMENTS FOUND AS NOTED PER
 CS 2007108.

NARRATIVE:

THE PURPOSE OF THIS SURVEY WAS TO ESTABLISH THE CORNERS AND MARK THE LINES OF LONGVIEW TIMBERLANDS, LLC LAND IN THE N.E. QUARTER OF SECTION 24 AS DESCRIBED IN FEE NO. 2007-02460 AS SHOWN HEREON FOR FUTURE TIMBER HARVEST.

RESEARCH OF THE PUBLIC RECORD WAS PERFORMED FOR SURVEYS, CORNER RECORDS AND CONVEYANCE DEEDS. LONGVIEW TIMBER'S DEED DESCRIBED TWO (2) EXCEPTION PARCELS. BOTH PARCELS COMMENCE AT THE SAME POINT OF BEGINNING BEING 40 FEET "SOUTH" OF THE S.E. CORNER OF LOT 62 OF THE "FIRST ADDITION TO RIVERSIDE PARK".

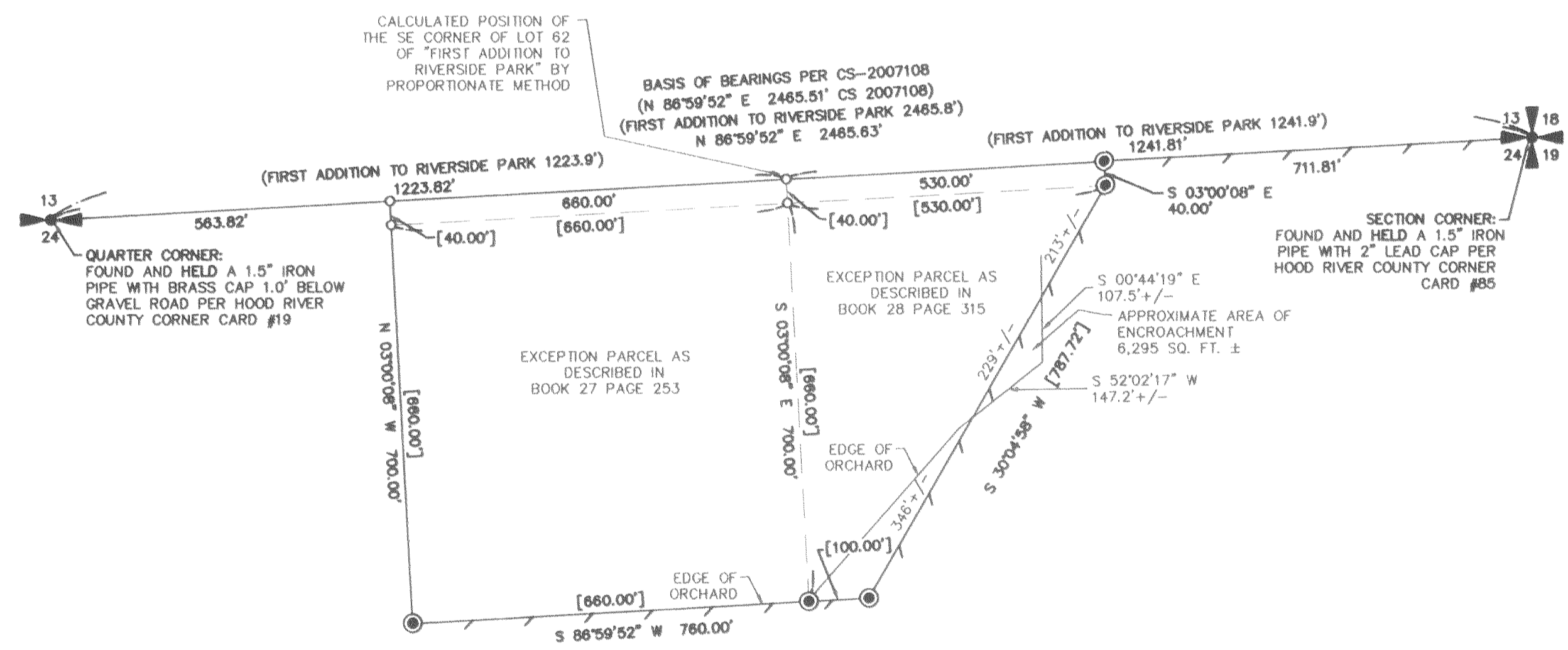
THERE ARE TWO POSSIBLE LOCATIONS FOR SAID "S.E. CORNER OF LOT 62". THE FIRST IS AS DEPICTED ON THE PLAT OF "FIRST ADDITION TO RIVERSIDE PARK" BEING AT THE INTERSECTION OF THE RIGHT-OF-WAY LINES OF COLLINS ROAD AND ALDER ROAD. USING THIS SOLUTION WOULD PUT THE PROPERTY LINES 40 FEET INSIDE OF THE ORCHARD AND CREATE A SUBSTANTIAL TRESPASS. THE SECOND BEING ON THE SECTION LINE/CENTERLINE OF ALDER ROAD AND COLLINS ROAD. THE PLAT DIMENSIONS ARE ALONG THE SECTION LINE/CENTERLINE OF THE ROAD AND IS THE METHOD USED/SHOWN IN HOOD RIVER COUNTY SURVEY NUMBERS 87059, 96004, 98049, 2002-006 AND 2008-085. USING THIS METHOD OF DETERMINING THE LOCATION OF THE "S.E. CORNER OF LOT 62" AGREES WITH THE AFOREMENTIONED SURVEYS AND THE PROPERTY LINES FOLLOW THE EDGE OF THE EXISTING ORCHARD.

AFTER CONSIDERING BOTH OPTIONS AND THE LINES OF OCCUPATION I DETERMINED THE "S.E. CORNER LOT 62" TO BE ON THE SECTION LINE/CENTERLINE OF THE ROAD METHOD. IT IS ALSO MY BELIEF THE DEEDS WERE WRITTEN AFTER THE ORCHARD WAS CLEARED AND CULTIVATED AND IS WHY THE SOLUTION USED IN THIS SURVEY CLOSELY MATCHES THE LINES OF OCCUPATION.

FOR THIS SURVEY I USED A NIKON NIVO 3.C TOTAL STATION WITH TDS ON-BOARD DATA COLLECTION SOFTWARE TO RUN A TRAVERSE FROM THE NORTH QUARTER CORNER OF SECTION 24 TO THE N.E. CORNER OF SECTION 24. THE DISTANCE WAS COMPARED TO EXISTING SURVEYS OF RECORD AND FOUND TO AGREE WITH THEM. I THEN ROTATED THE LINE TO MATCH THE BEARING AS SHOWN ON COUNTY SURVEY NUMBER 2007108.

I THEN CALCULATED THE PROPORTIONAL POSITION OF THE S.E. CORNER OF LOT 62 OF THE "FIRST ADDITION TO RIVERSIDE PARK" USING THE SECOND OPTION AS STATED ABOVE. FROM THIS POINT AS DESCRIBED IN THE EXCEPTION DEEDS I WENT "SOUTH" FOR 40 FEET TO THE POINT OF BEGINNING OF THE EXCEPTION PARCELS. I INTERPRET "SOUTH" TO BE PERPENDICULAR TO THE EAST-WEST SECTION LINE. I THEN HELD THE DEED ANGLES AND DISTANCES DESCRIBED IN THE EXCEPTIONS.

A TRAVERSE WAS THEN RUN FROM THE SECTION LINE TRAVERSE AROUND THE EXCEPTION PARCELS AND CLOSED ON SAID SECTION LINE TRAVERSE. THE TRAVERSE AROUND THE EXCEPTION PARCELS WAS ANGLE BALANCED AND ADJUSTED BY COMPASS RULE METHOD. CORNERS SHOWN AS SET WERE DONE SO RADIALLY FROM SAID TRAVERSE.



LEGEND:

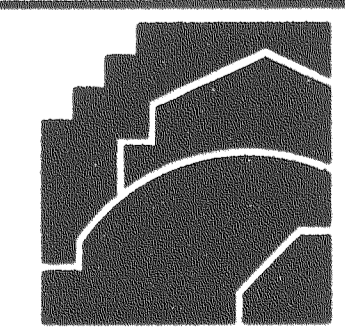
- INDICATES A CALCULATED POSITION
- INDICATES MONUMENT FOUND AS NOTED
- ⊙ INDICATES 5/8" x 36" IRON REBAR WITH YELLOW PLASTIC CAP INSCRIBED "SIMES 83256PLS" SET APRIL 6, 2012
- () INDICATES RECORD INFORMATION PER SURVEY CITED
- [] INDICATES DEED DISTANCE
- INDICATES LINE MARKED WITH 1/2" x 72" FIBER GLASS RODS WITH RED AND WHITE RIBBON. TREES ALONG LINE PAINTED WITH BLUE PAINT.

DEED REFERENCES:
 GRANTOR: CHAMPION INTERNATIONAL CORPORATION
 GRANTEE: LONGVIEW FIBRE COMPANY
 FEE # 841119

GRANTOR: LONGVIEW FIBRE COMPANY
 GRANTEE: LONGVIEW TIMBERLANDS, LLC
 FEE # 2007-02460

5-9-2012
REGISTERED PROFESSIONAL LAND SURVEYOR
Jason L. Simes
 OREGON
 NOVEMBER 10, 2009
 JASON L. SIMES
 83256PLS
 Expires 6-30-2012

SCALE: 1"=200'
 JOB NO. 1N9E24
 DATE: 4-11-12
 CALC BY: JLS
 DRAWN BY: JLS
 CHECKED BY: EVB
 SHEET 1 OF 1



LONGVIEW TIMBER CORP.
 10 INTERNATIONAL WAY
 LONGVIEW, WA 98632