

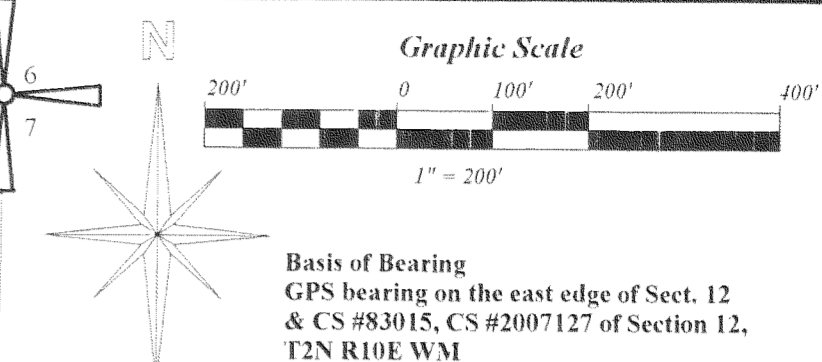
1/4 between S 1 & S 12 Calc. corner based off CS # 95111

- A. Fd. bent 5/8" IR w/2" cap with 3/8" fiberglass rod CS 2007127
- B. Fd. 5/8" IR w/2" cap with 3/8" fiberglass rod as approx point on spiral curve
- C. Fd. 5/8" IR w/2" cap with 3/8" fiberglass rod CS 2007-127
- D1. Set 5/8" IR w/2" cap with 3/8" fiber rod as R/W
- D2. Set 5/8" IR w/2" cap with 3/8" fiber rod as POL
- E. Set 5/8" IR w/2" cap with 3/8" fiber rod as property cor. in blackberry patch
- F. Fd. 5/8" IR w/2" cap with 3/8" fiberglass rod CS 2007-127
- G.
- D = 64°27'23.19" @ c/l & 39°50'19" @ P/L
- A = 337.49' @ c/l & 229.45' @ P/L
- R = 300.00' at c/l 330.00' at R/W
- LC = N58°20'32"E, 319.98' c/l
- LC = S46°02'06"W, 224.86' @ P/L
- T = 189.13' @ c/l & 119.58' @ P/L
- H. Fd. 5/8" IR w/2" cap with 3/8" fiberglass rod CS 2007127
- I.
- D = 36°43'23"
- A = 414.93'
- R = 647.37' at R/W
- LC = S34°51'50"W, 407.86'
- T = 214.87'

- J. 3'00 CR
- T delta = 25°17'30"
- Ts = 679.59'
- K.
- N 26°03'29" E 48.50' to offset spiral chord
- L.
- N 26°03'29" E 112.98' to offset spiral chord
- M. N 26°49'57" E 219.10' to offset spiral chord
- N.
- N 15°41'05" E 140.49' to offset spiral chord

REGISTERED PROFESSIONAL LAND SURVEYOR
Dennis Peoples
 7/24/2012
 OREGON
 Dennis R Peoples
 Jan. 1. 1988
 LICENSE # 2325
 EXPIRES 12/31/2012

D2AB Surveying Inc.
 22 Cottontail Ridge Road
 White Salmon, WA 98672
 Phone 509-493-3376



Hood River County Surveyor's Office
 Survey No. CS 2012 012
 Filed 5.3.12
 By [Signature]

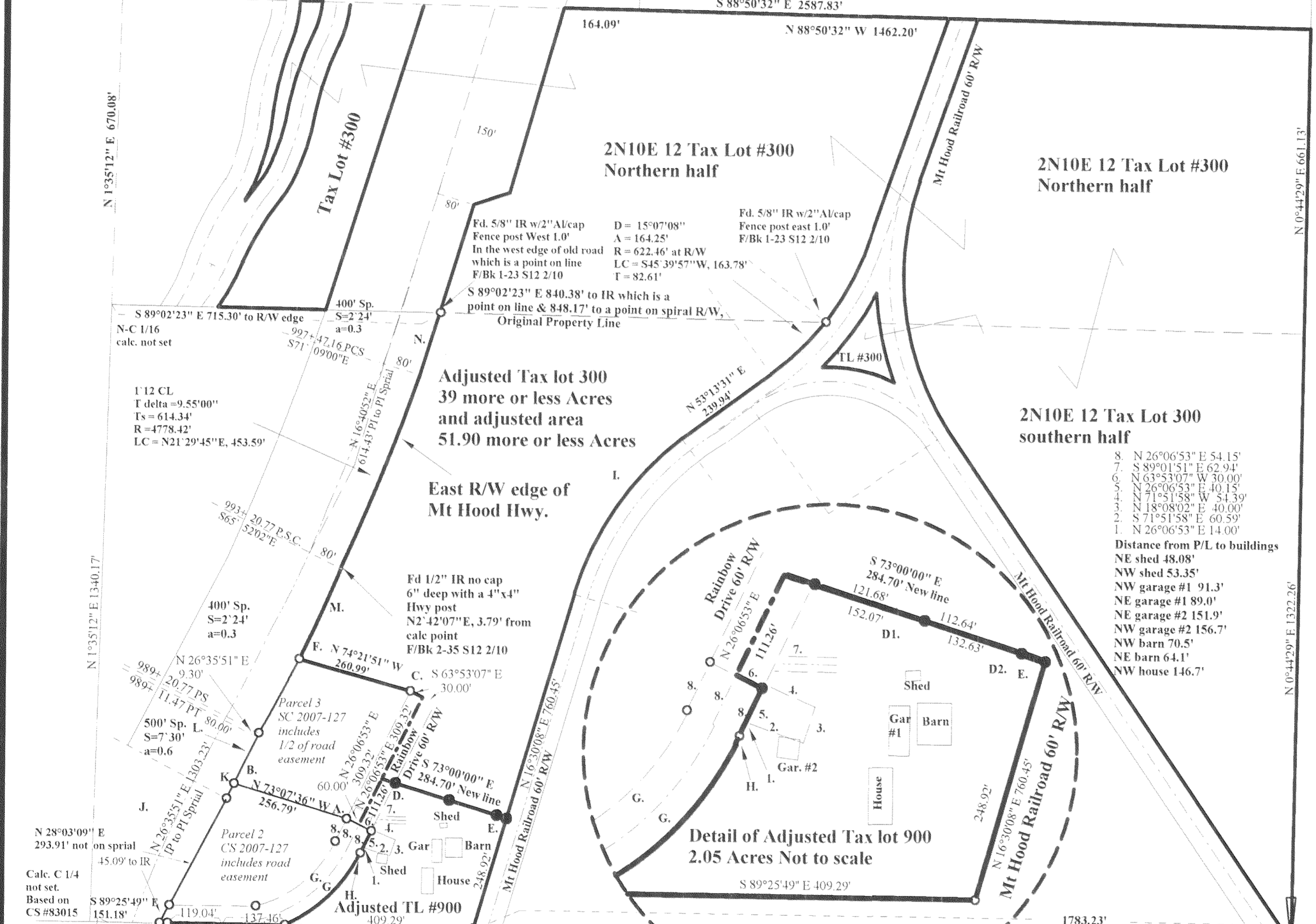
Property Line Adjustment
 Located in South 1/2 of Northeast 1/4 Sec. 12 T2N R10E W.M.
 County of Hood River, State of Oregon Between 2N 10E 12
 Tax Lot 300 & 900 for Joe Holt

References:
 REFERENCED DEEDS:
 Contract of sale, recorded in instrument No. 20041758
 Warranty Deed recorded in Instrument No. 680140
 REFERENCED SURVEYS:
 Oregon State Highway Dept Map No ir-4-222
 Survey performed by D2AB Surveying filed as CS# 2007-005 & 2007-127
 Survey performed by DLC Surveying, file as CS# 83015
 Survey performed by Klein & Associates, Inc, filed as CS# 2010 032
 Survey performed by Gera, filed as CS# 95111

GLO notes, deeds, surveys of record CS# 7337, CS# 81106, CS# 82002, CS# 83012, CS#83015, State Hwy maps 4F 9-8 Sh 10-13, PacificCorps Powerdale Hydroelectric Project

Equipment: 6" Topcon Total Station or 3" Leica, closed loop, calibrated Dec. 2011, closed loop by Least Squares or Compass Rule, 1/64781 0.058".

- Legend
- Set 5/8" iron rod with 2" or 2 1/2 AL Cap
 - Found monument of record
 - Fd. Found corner



Narrative:

1. The purpose of this survey was to adjust Tax Lot # 300 and Tax Lot #900 in the 1/4 Sec. 12 2N 10E, WM bounded Mt Hood RR and Mt. Hood Hwy on the west and the Mt. Hood Railroad on the East, in the South 3/4 of NE 1/4 Sec. 12 2N 10E, WM.
2. I used GPS to locate and tie the NE & SE Section corners of Sec. 12 and other controlling points for horizontal control and I used the east edge of Section 12 as my Basis of Bearing.
3. Then I ran a closed traverse through the gps points for sets.
4. The Mt. Hood Railroad tracks were used as the center line of the railroad to locate the west controlling edge of the railroad.
5. The corners fit very well within lines of occupation.
6. Corners were set March 5, 27, 2012.
7. Controlling mon. were found for State Hwy 35 and lost corners were reset as noted on the plat.
8. I found both IR's at 975+68.41 P.S. and rotated from the East 1/4 and fit hwy ties within 0.2'. I also found R/W IR at 993+20.77' P.C.S. and it fit within 3' of calc point.

NE corner of Sect. 12 2N 10E: Fd. Brass Cap in Mon. Box
 This corner is N0°44'29" E 2644.52' (2644.57' CS#83015) from E 1/4 Sect. 12
 and found the SE of Section 12 2N 10E (Fd. HRC 3" Brass cap), is
 S0°02'02" E, 2624.85' (2625.20') CS# 83015) from the E 1/4 Sect. 12

RECEIVED APR 27 2012

CS 2012 012