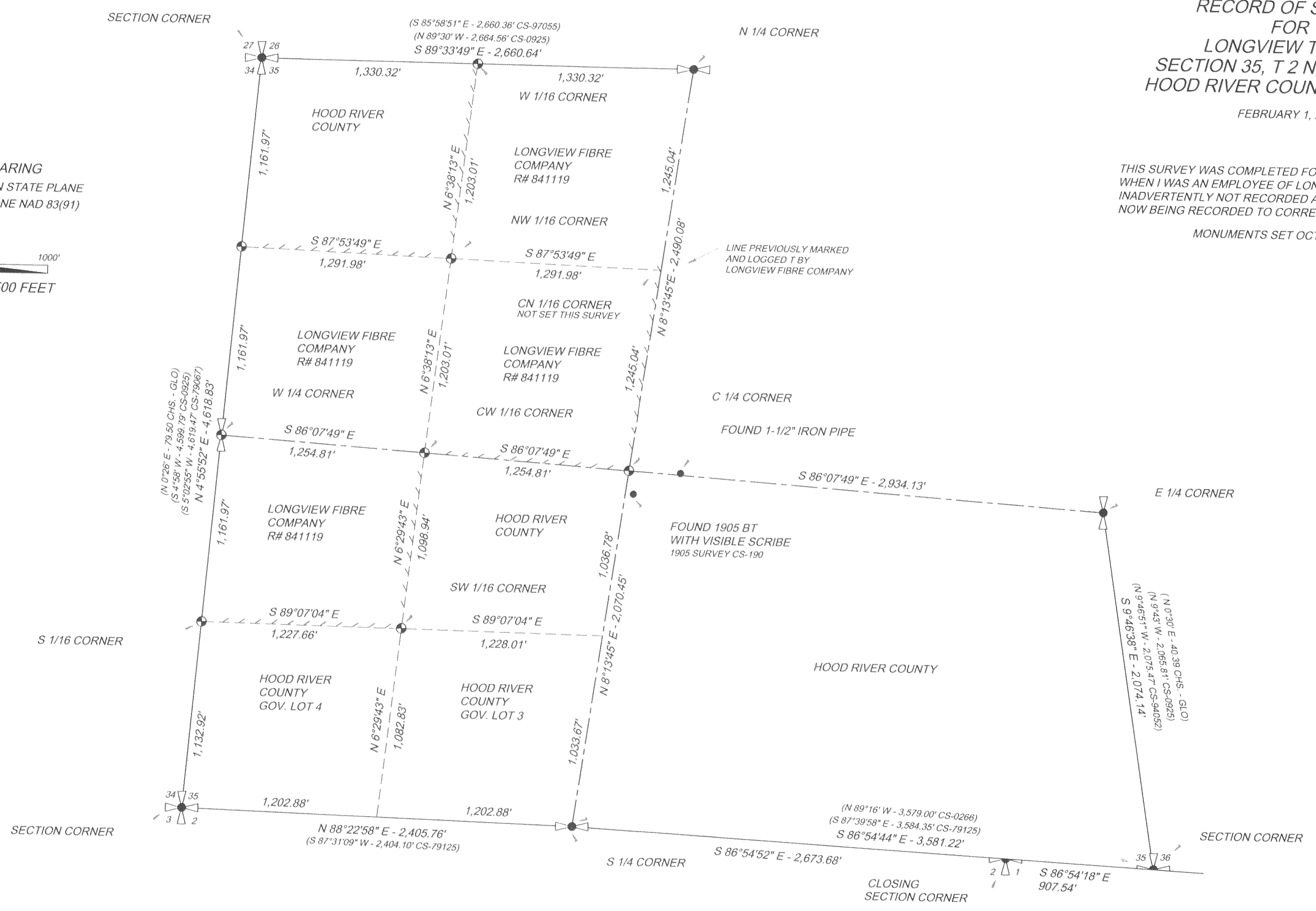
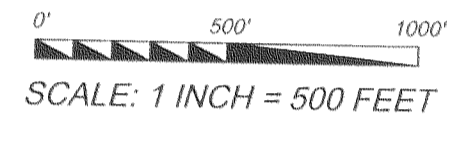
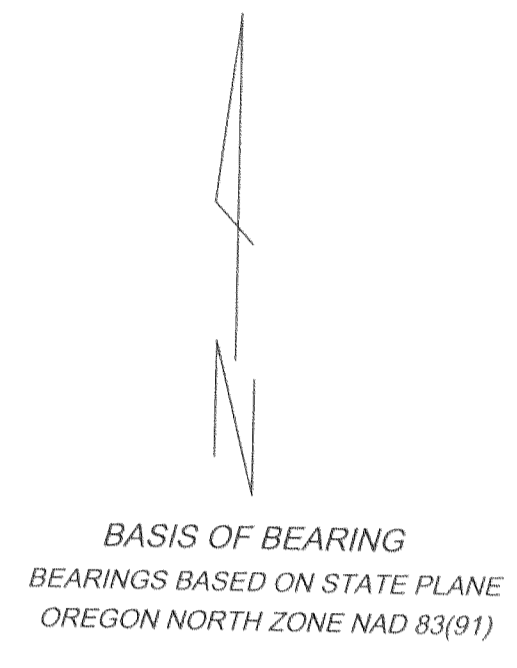


RECORD OF SURVEY  
 FOR  
 LONGVIEW TIMBER  
 SECTION 35, T 2 N, R 9 E, W.M.  
 HOOD RIVER COUNTY, OREGON

FEBRUARY 1, 2012

THIS SURVEY WAS COMPLETED FOR LONGVIEW FIBRE COMPANY WHEN I WAS AN EMPLOYEE OF LONGVIEW FIBRE. THE SURVEY WAS INADVERTENTLY NOT RECORDED AT THAT TIME. THIS SURVEY IS NOW BEING RECORDED TO CORRECT THAT ERROR.

MONUMENTS SET OCTOBER 2002

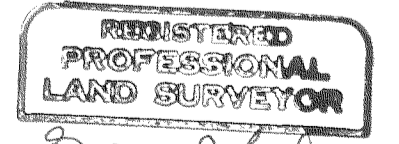


- LEGEND**
- SECTION CORNER, 1/4 CORNER FOUND AS NOTED
  - FOUND MONUMENT AS NOTED
  - SET 3/4" X 30" PIPE WITH 2" BRASS CAP STAMPED AS SHOWN
  - RECORD BEARING AND/OR DISTANCE, AS NOTED
  - LINE MARKED WITH 1/2" X 60" FIBER GLASS RODS RED AND WHITE RIBBON ALONG LINE BETWEEN RODS TREES ALONG LINE PAINTED WITH BLUE PAINT

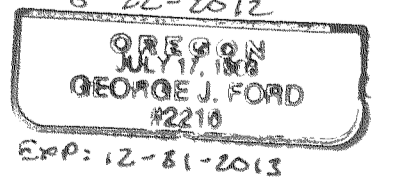
NOTE: NEW REFERENCES HAVE AN 8" SPIKE AT BASE OF SCRIBE WITH LONGVIEW FIBRE COMPANY LOCATION TAG ABOVE SCRIBE. ALL ORIENTED TOWARD THE MONUMENT. DISTANCES MEASURED TO SPIKE. BEARINGS TO REFERENCES TAKEN WITH HAND COMPASS HAVING A DECLINATION OF 21° EAST.

THIS MAP CORRECTLY REPRESENTS A SURVEY MADE BY ME AT THE REQUEST OF LONGVIEW FIBRE CO. IN AUGUST 2002.

GEORGE J. FORD, PLS  
 CERTIFICATE NO. 2210



PO BOX 353  
 KLICKITAT, WA 98628  
 (509) 369-1014



02N 09E 00 2400

RECEIVED MAR 22 2012

CS 2012 008-1

RECORD OF SURVEY  
FOR  
LONGVIEW TIMBER  
SECTION 35, T 2 N, R 9 E, W.M.  
HOOD RIVER COUNTY, OREGON

FEBRUARY 1, 2012

THIS SURVEY WAS COMPLETED FOR LONGVIEW FIBRE COMPANY WHEN I WAS AN EMPLOYEE OF LONGVIEW FIBRE. THE SURVEY WAS INADVERTENTLY NOT RECORDED AT THAT TIME. THIS SURVEY IS BEING RECORDED TO CORRECT THAT ERROR.

MONUMENTS SET OCTOBER 2002

THE PURPOSE OF THIS SURVEY WAS TO LOCATE PROPERTY LINES BETWEEN LONGVIEW FIBRE COMPANY AND HOOD RIVER COUNTY IN SECTION 35. THIS SECTION WAS SUBDIVIDED IN 1905, SEE J.L.H. SURVEY CS-190. THE CENTER 1/4 CORNER WAS ESTABLISHED AT THE INTERSECTION OF TRUE LINES RAN BETWEEN THE FOUND EXTERIOR 1/4 CORNERS. THE 1905 SURVEY NOTED THE EXISTING DITCHES CROSSING THE RAN LINES. WE WERE ABLE TO RECOVER THE CENTER 1/4 CORNER REFERENCE NOTED AS A MARKED DOUBLE FIR BEARS SOUTH "CS 35". THE 1905 NOTES DID NOT RECORD A DISTANCE FROM THE REFERENCE TO THE CORNER. I WAS NOT ABLE TO RECOVER THE 1905 CENTER 1/4 CORNER POSITION, THE NORTH 1/4 CORNER POSITION OR THE WEST 1/4 CORNER POSITION BASED ON 1905 RECORD DISTANCES.

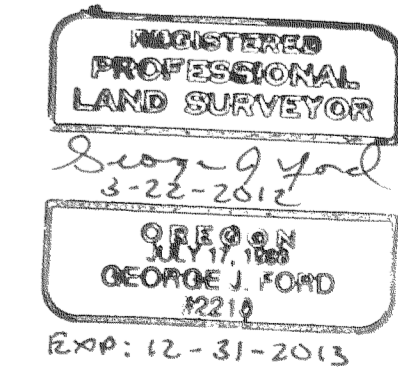
MART C. PERKINS, COUNTY SURVEYOR, PERFORMED A SECTION SUBDIVISION SURVEY OF SECTION 35 IN 1961, SEE CS-0925. PERKINS ESTABLISHED A 1" IRON BAR AT A POINT N 65° 32' E AT 317.12 FEET FROM THE FOUND 1905 CENTER 1/4 REFERENCE. THE 1961 SURVEY WAS DONE INCORRECTLY AND THE IRON BAR WAS NOT ACCEPTED. THE IRON BAR WAS BASED ON A PROPORTIONED SOUTH 1/4 CORNER PERKINS NOTED AS 636.77 FEET EAST OF THE ORIGINAL SOUTH 1/4 CORNER OF SECTION 35. PERKINS SHOULD HAVE ACCEPTED THE FOUND GLO SOUTH 1/4 CORNER TO BE THE CENTER 1/4 CORNER POSITION. THE 1961 SURVEY ALSO PROPORTIONED THE NORTH AND WEST 1/4 CORNERS. THE WEST 1/4 CORNER, NOTED AS A 5/8" REBAR ON CS-79067, WAS FOUND N 21° 46' E AT 18.71 FEET FROM THE CORRECT POSITION. THE RECORD DISTANCE FROM THE SET REBAR (CS-79067) TO THE SOUTH 1/16 SET MONUMENT (CS-79067) IS S 5° 12' W AT 1162.55 FEET. THE RECORD DISTANCE NOTED ON SURVEY (CS-79067) WAS 1161.97 FEET. THE REBAR AND MONUMENT NOTED ON CS-79067 WERE NOT ACCEPTED BY THIS SURVEY. THE NORTH 1/4 CORNER SHOWN ON CS-97055 WAS ACCEPTED BY THIS SURVEY. THE EAST 1/4 CORNER SHOWN ON CS-94052 WAS ACCEPTED BY THIS SURVEY.

SECTION 35 WAS ORIGINALLY SURVEYED BY LEBAN H. WHEELER, SURVEY NO. 482, DATED AUGUST 1883, IN PURSUANCE OF SPECIAL INSTRUCTION; THE EAST AND WEST LINES WERE RUN FROM NORTH TO SOUTH WITH LOTS BEING CREATED ALONG SOUTH LINE OF SECTION 35. SURVEY BY PERKINS, DATED AUGUST 1961, CS-0925, NOTED THE WEST 1/4 CORNER AND SOUTH 1/16 CORNER ON THE WEST LINE OF SECTION 34 AS SET. THE SOUTH 1/16 CORNER WAS SET AT MIDPOINT NOT AT THE CORRECT PROPORTION POSITION BASED ON SPECIAL INSTRUCTIONS AND GLO PLAT CREATING LOTS. SURVEY OF SECTION 34 FOR CHAMPION TIMBERLANDS, DATED 8-23-79, CS-79067 ALSO NOTED THE SOUTH 1/16 CORNER ON THE EAST LINE OF SECTION 34 AT MIDPOINT DISREGARDING GLO RECORD AND PLAT FOR LOTS ALONG SOUTH LINE OF SECTION 34. THIS SURVEY ESTABLISHED THE WEST 1/4 CORNER AND SOUTH 1/16 CORNER COMMON TO SECTIONS 34 AND 35 BASED ON GLO PLAT.

THIS MAP CORRECTLY REPRESENTS A SURVEY MADE BY ME AT THE REQUEST OF LONGVIEW FIBRE COMPANY IN AUGUST 2002.

GEORGE J. FORD, PLS  
CERTIFICATE NO. 2010

FORD LAND SURVEYING  
PO BOX 353  
CLICKITAT, WA 98628



EXP: 12-31-2013

CS 2012 008\_2



**SECTION CORNER**  
FOUND 1.4" X 0.9" STONE  
WITH NAIL IN STONE  
FOUND REFERENCES:  
46" FIR S35°W AT 17'  
FOREST SERVICE TAG DATED 9-16-58  
BY COUNTY SURVEYOR  
48" FIR SNAG N38°W AT 37'  
VISIBLE AXING, NO SCRIBE  
GLO (28" FIR N44°W AT 55 LINKS)  
36" FIR STUMP N70°E AT 35.5'  
VISIBLE AXING, NO SCRIBE  
NEW REFERENCES:  
12" FIR N64°W AT 10.98'  
SCRIBED [T2N R9E S27 BT]  
14" FIR S11°E AT 8.48'  
SCRIBED [T2N R9E S35 BT]  
STEEL FENCE POST  
SOUTH AT 2.0'



**W 1/16 CORNER**  
SET 3/4" X 3/8" PIPE  
WITH 2" BRASS CAP  
NEW REFERENCES:  
19" W. FIR S5°W AT 9.50'  
SCRIBED [W 1/16 S35 BT]  
18" FIR N10°W AT 17.00'  
SCRIBED [W 1/16 S 26 BT]  
STEEL FENCE POST  
EAST AT 2.0'



**N 1/4 CORNER**  
FOUND 3/4" PIPE  
FOUND REFERENCES:  
15" FIR S74°W AT 24.2'  
WITH HEALED SCAR  
19" FIR N23° AT 21.3'  
WITH SCAR & USFS TAG



**N 1/16 CORNER**  
SET 3/4" X 3/8" PIPE  
WITH 2" BRASS CAP  
NEW REFERENCES:  
15" FIR N84°W AT 11.10'  
SCRIBED [N 1/16 S34 BT]  
16" FIR S84°E AT 3.80'  
SCRIBED [N 1/16 S35 BT]  
STEEL FENCE POST  
NORTH AT 2.0'



**NW 1/16 CORNER**  
SET 3/4" X 3/8" PIPE  
WITH 2" BRASS CAP  
NEW REFERENCES:  
16" FIR N52°W AT 12.92'  
SCRIBED [NW 1/16 S35 BT]  
13" FIR S22°E AT 8.31'  
SCRIBED [NW 1/16 S35 BT]  
STEEL FENCE POST  
WEST AT 2.0'



**W 1/4 CORNER**  
SET 3/4" X 3/8" PIPE  
WITH 2" BRASS CAP  
AT PROPORTION POSITION  
NEW REFERENCES:  
20" FIR N82°E AT 9.05'  
SCRIBED [1/4 S35 BT]  
20" FIR N43°W AT 20.02'  
SCRIBED [1/4 S34 BT]  
STEEL FENCE POST  
SOUTH AT 2.0'  
FOUND 5/8" REBAR WITH  
ALUMINUM CAP  
N 21°45'39" E - 18.71'  
SEE CS-79067  
FOUND 2" AXLE  
N 60°00'37" W - 14.84'



**CW 1/16 CORNER**  
SET 3/4" X 3/8" PIPE  
WITH 2" BRASS CAP  
NEW REFERENCES:  
17" FIR S10°E AT 10.12'  
SCRIBED [CW 1/16 S35 BT]  
25" FIR N56°E AT 14.26'  
SCRIBED [CW 1/16 S35 BT]  
11" FIR N6°W AT 24.65'  
SCRIBED [CW 1/16 S35 BT]  
STEEL FENCE POST  
EAST AT 2.0'



**C 1/4 CORNER**  
SET 3/4" X 3/8" PIPE  
WITH 2" BRASS CAP  
NEW REFERENCES:  
13" FIR S16°W AT 4.82'  
SCRIBED [C 1/4 S35 BT]  
25" FIR N56°E AT 14.26'  
SCRIBED [C 1/4 S35 BT]  
11" FIR N6°W AT 24.65'  
SCRIBED [C 1/4 S35 BT]  
STEEL FENCE POST  
NORTH AT 2.0'  
FOUND 1-1/2" IRON BAR  
S 87°57'54" E - 328.08'  
SEE CS-0925  
FOUND 1905 C 1/4 BT  
WITH VISIBLE SCRIBE [C S 35]  
S 15°20'35" W - 148.31'  
SEE CS-190



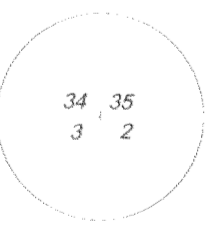
**E 1/4 CORNER**  
FOUND 1/2" REBAR WITH  
YELLOW PLASTIC CAP "LS 1028"  
SEE CS-94052  
FOUND 3/8" NAIL IN PILE OF STONE  
S 11°08' E AT 7.8' FROM REBAR  
BADLY DECAYED STUMP WITH  
AXING AND OVERGROWN AXING  
VISIBLE ON STUMP AND IN DEPRIS  
AROUND STUMP  
S 35°15' E AT 4.2' FROM  
FOUND NAIL



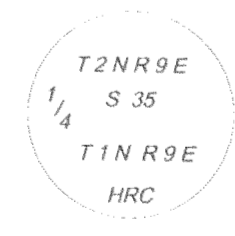
**S 1/16 CORNER**  
SET 3/4" X 3/8" PIPE  
WITH STAMPED BRASS CAP  
AT PROPORTION POSITION  
NEW REFERENCES:  
15" W. FIR S70°E AT 11.10'  
SCRIBED [S 1/16 S35 BT]  
9" FIR S58°W AT 16.15'  
SCRIBED [S 1/16 S34 BT]  
STEEL FENCE POST  
NORTH AT 2.0'  
FOUND 3" BRASS CAP  
IN 3" CONCRETE  
N 4°46'36" E - 17.35'  
SEE CS-79076  
FOUND 1/2" PIPE  
N 37°40'19" W - 16.66'  
SEE CS-0925



**SW 1/16 CORNER**  
SET 3/4" X 3/8" PIPE  
WITH 2" BRASS CAP  
NEW REFERENCES:  
8" FIR S20°E AT 23.00'  
SCRIBED [SW 1/16 S35 BT]  
20" FIR N82°W AT 40.42'  
SCRIBED [SW 1/16 S35 BT]  
STEEL FENCE POST  
EAST AT 2.0'



**STANDARD SECTION CORNER**  
FOUND 2-1/4" PIPE  
WITH 2-1/2" BRASS CAP  
FOUND REFERENCES:  
36" FIR STUMP S73°E AT 11.5'  
(GLO S53°E - 12.5') AXING VISIBLE  
20" FIR STUMP S60°W AT 22.9'  
(GLO S50°W - 23.1') AXING VISIBLE  
DECAYED STUMP N23°E AT 16.1'  
(GLO N26°W - 15.8') AXING VISIBLE  
NEW REFERENCES:  
5" FIR S80°W AT 7.33'  
SCRIBED [T2N R9E S3 BT]  
16" FIR S44°E AT 15.18'  
SCRIBED [T2N R9E S2 BT]



**S 1/4 CORNER**  
FOUND 2" PIPE WITH  
2" ALUMINUM CAP  
FOUND REFERENCES:  
11" OAK N16°W AT 16.7'  
HEALED SCAR  
14" OAK S32°E AT 12.0'  
HEALED SCAR, HOOD RIVER COUNTY  
LOCATION TAG DATED 1980  
22" FIR S75°E AT 6.0'  
HEALED SCAR, HOOD RIVER COUNTY  
LOCATION TAG, DATED 1-2-80  
10" OAK N56°E AT 25.1'  
AXING VISIBLE, NO SCRIBE  
NEW REFERENCES:  
STEEL FENCE POST  
SOUTH AT 1.0'

**CLOSING SECTION CORNER**  
FOUND IRON STAKE  
WITH 4" X 4" STEEL  
PLATE ON TOP



**STANDARD SECTION CORNER**  
FOUND 2" ALUMINUM CAP  
IN CONCRETE  
FOUND REFERENCES:  
36" FIR N33°W AT 18.0'  
HEALED SCAR  
9" FIR S48°W AT 14.22'  
STATE TAG, SPIKE, NO SCRIBE  
9" FIR N82°E AT 12.5'  
STATE TAG  
STEEL FENCE POST  
WEST AT 1.0'