

RECORD OF SURVEY
FOR
LONGVIEW TIMBER
IN THE NW 1/4, THE SW 1/4 AND IN
THE SE 1/4 OF
SECTION 30, T1N, R9E, W.M.
HOOD RIVER COUNTY, OREGON
MONUMENTS SET OCTOBER 27, 2011

0' 600' 1,200'
SCALE: 1 INCH = 600 FEET

BEARINGS BASED ON SURVEY
CS-80091 FOR U.S.D.A. FOREST
SERVICE, REGION 6
WEST 1/4 SECTION 30 TO
SOUTHWEST SECTION CORNER
SECTION 30

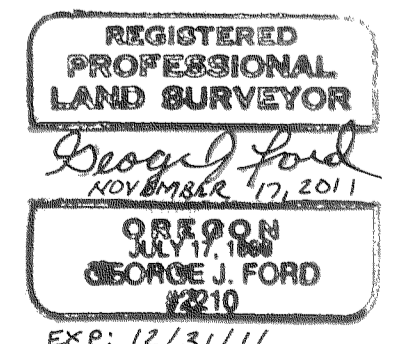
NARRATIVE

THE PURPOSE OF THIS SURVEY WAS TO LOCATE THE PROPERTY BOUNDARY OF LONGVIEW TIMBER. THE WEST LINE WAS MONUMENTED BY BISHOP IN SURVEY FOR U.S. FOREST SERVICE IN 1980, CS-80091. CARSONITE POSTS WERE SET TO MARK LINE. THIS SURVEY HELD THE CORNERS ESTABLISHED BY BISHOP. HOOD RIVER COUNTY SURVEYED SECTION 31 IN 1981, CS-81006. THE NORTH EAST CORNER OF SECTION 31 WAS NOTED AS CALCULATED BY DOUBLE PROPORTION. HOOD RIVER COUNTY FOUND THE NORTHEAST CORNER OF SECTION 30. THE EAST 1/4 OF SECTION 30 WAS NOT FOUND. THIS SURVEY ACCEPTED AND HELD THE CORNERS ESTABLISHED AND CALCULATED BY HOOD RIVER COUNTY. THE NORTH 1/4 CORNER WAS NOTED AS FOUND ON 1960 SURVEY BY GEORGE FREY, CS-0266. I WAS NOT ABLE TO FIND THE 1960 MONUMENT THE LOCATION BASED ON THE FREY SURVEY WOULD BE 160 FEET FROM THE PROPORTION POSITION BASED ON THE 1960 RECORD DISTANCE. HOOD RIVER COUNTY REJECTED A FOUND PIPE N 64°39'E AT 298.15 FEET FROM THE NORTH 1/4 CORNER OF SECTION 31. NEITHER POSITION HAD CORROBORATING EVIDENCE SUPPORTING THE POSITION. THE SECTION SUBDIVISION IS BASED ON THE CORNERS ESTABLISHED BY BISHOP AND HOOD RIVER COUNTY.

THIS MAP CORRECTLY REPRESENTS A SURVEY MADE BY ME OR UNDER MY DIRECTION AT THE REQUEST OF LONGVIEW TIMBER CORP. IN JULY 2011.

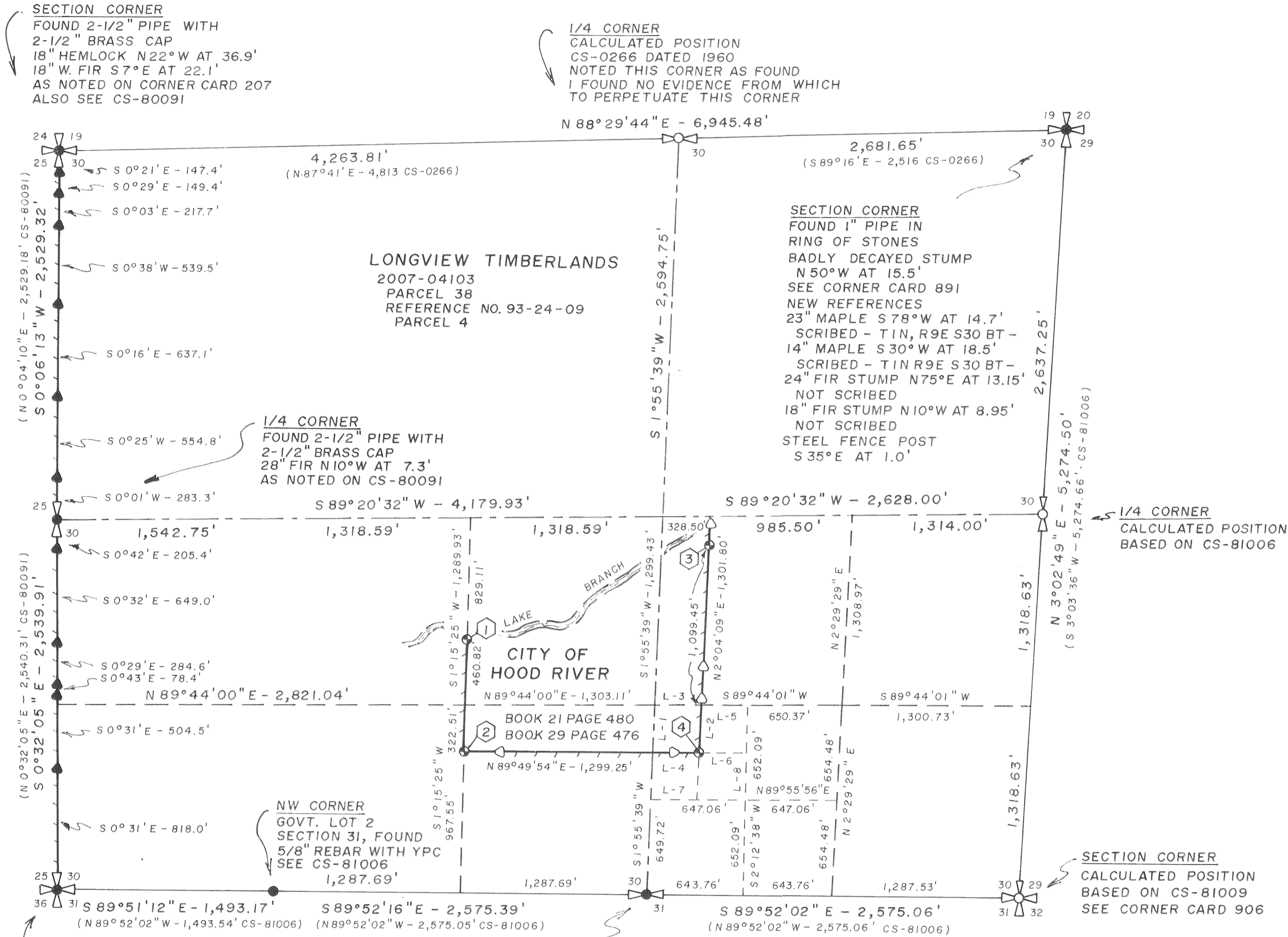
GEORGE J. FORD, PLS
CERTIFICATE NO. 2210

PO BOX 353
KLICKITAT, WA 98628
(509) 369-1014



CS 2012 003

- 1 POINT ON LINE
SET 3/4" IRON ROD
WITH 1-1/2" ALUMINUM CAP
STAMPED "POINT ON LINE PLS 2210"
10" FIR N20°W AT 9.53'
9" FIR S70°E AT 14.42'
STEEL FENCE POST SOUTH AT 1.0'
TOP OF ROCK BLUFF ON
SOUTH SIDE OF NARROW GORGE
- 2 PROPERTY CORNER
SET 3/4" IRON ROD
WITH 1-1/2" ALUMINUM CAP
STAMPED "PROP COR PLS 2210"
26" FIR S52°E AT 7.72'
20" FIR S60°W AT 18.14'
STEEL FENCE POST NORTH AT 1.0'
CREEK 20' EAST OF CORNER
- 3 POINT ON LINE
SET 3/4" IRON ROD
WITH 1-1/2" ALUMINUM CAP
STAMPED "POINT ON LINE PLS 2210"
20" FIR N50°E AT 4.0'
21" FIR S14°E AT 20.48'
STEEL FENCE POST SOUTH AT 1.0'
OLD ROAD GRADE APPARENT
CENTER LINE NORTH AT 20'
- 4 PROPERTY CORNER
SET 3/4" IRON ROD
WITH 1-1/2" ALUMINUM CAP
STAMPED "PROP COR PLS 2210"
17" FIR S80°E AT 4.19'
9" FIR N30°W AT 6.35'
STEEL FENCE POST WEST AT 2.0'



SECTION CORNER
FOUND 2-1/2" PIPE WITH
2-1/2" BRASS CAP
28" STUMP S21°W AT 6.3'
RAILROAD SPIKE IN CENTER
30" HEMLOCK N62°E AT 49.2'
HEALED SCAR
SEE CORNER CARD 91
NEW REFERENCES
8" FIR N74°W AT 11.45'
SCRIBED - TIN R8E S25 BT -
13" FIR S10°W AT 5.8'
SCRIBED - TIN R8E S36 BT -
12" FIR N45°E AT 11.00'
SCRIBED - TIN R9E S30 BT -
FOUND CARSONITE POST
N45°W AT 1.4'

1/4 CORNER
FOUND 1-1/2" PIPE
WITH BRASS CAP
SEE CORNER CARD 889
AND CS-81006

LINE TABLE
L-1 = N1°55'39"E - 324.86'
L-2 = N2°04'09"E - 325.45'
L-3 = N89°44'01"E - 325.18'
L-4 = N89°49'57"E - 324.35'
L-5 = N89°44'01"E - 325.18'
L-6 = N89°49'57"E - 324.35'
L-7 = N89°55'56"E - 323.53'
L-8 = N2°12'38"E - 326.04'

NOTE: NEW REFERENCES HAVE YELLOW LOCATION TAG ABOVE SCRIBE AND 6 INCH SPIKE AT BASE OF SCRIBE, ALL ORIENTED TOWARD MONUMENT. BEARINGS TAKEN WITH HAND COMPASS WITH A DECLINATION OF 16° EAST. DISTANCES MEASURED TO SPIKE. REFERENCES FOR POINTS ON LINE AND PROPERTY CORNERS NOT SCRIBED.

LEGEND

- SECTION CORNER, 1/4 CORNER, AS NOTED
- FOUND MONUMENT, AS DESCRIBED
- CALCULATED POSITION
- SET 3/4" x 24" IRON ROD WITH STAMPED 1-1/2" ALUMINUM CAP "PROP COR PLS 2210" OR "POINT ON LINE PLS 2210"
- STEEL FENCE POST SET ON LINE
- FOUND CARSONITE POST, SEE CS-80091
- () RECORD BEARING AND/OR DISTANCE AS NOTED