

**HOOD RIVER COUNTY
SURVEYOR'S OFFICE**

Survey No. *CS 2011 050*

Filed *12-14-11*

By *[Signature]*

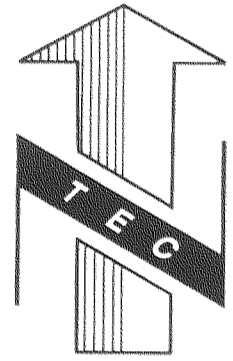
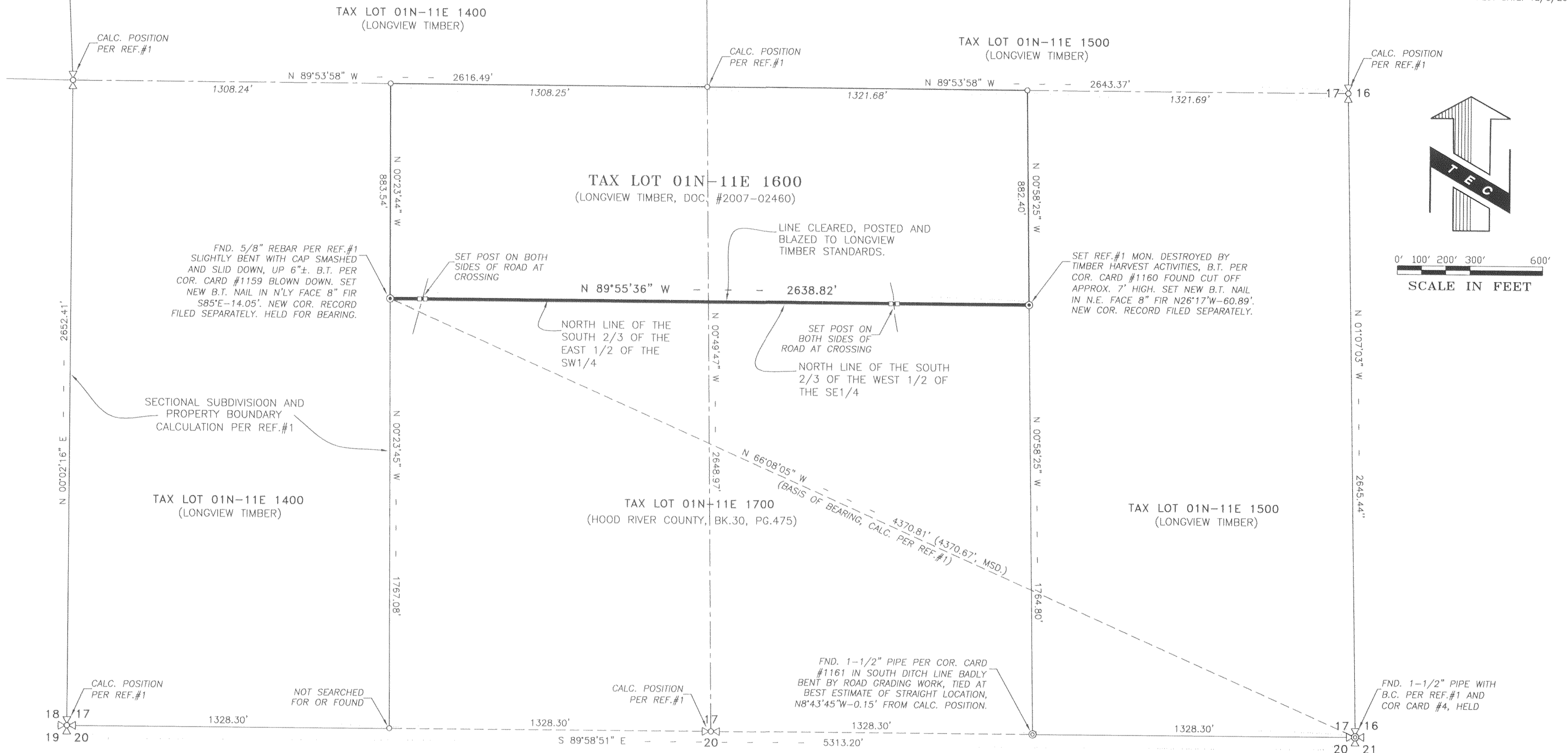
PLOT DATE: 12/8/2011

REFERENCES :

- 1) HOOD RIVER COUNTY SURVEY BY HOOD RIVER COUNTY FILED SEPTEMBER 29, 1995 C.S. #95-090
- 2) HOOD RIVER COUNTY CORNER CARD No.s 4, 1159, 1160 AND 1161.

NOTES :

1. BEARINGS BASED ON COUNTY SURVEY #95-090 BETWEEN FOUND MONUMENTS AS SHOWN.
2. MONUMENTS SET AND RECOVERED ON OCTOBER 13 & 27 AND NOVEMBER 3, 2011



0' 100' 200' 300' 600'
SCALE IN FEET

NARRATIVE :

THE PURPOSE OF THIS SURVEY WAS TO VERIFY THE POSITION OF THE EXISTING MONUMENTS AND THEN MARK THE INTERVENING LINE FOR THE SOUTH LINE OF TAX LOT 01N-11E 1600. THE SUBJECT PROPERTY LIES IN THE SOUTH 1/2 OF SECTION 17, TOWNSHIP 1 NORTH, RANGE 11 EAST, W.M., HOOD RIVER COUNTY, OREGON. PRIOR TO COMPLETING THE FIELD WORK AND MAPPING NECESSARY FOR THIS PROJECT, RESEARCH WAS MADE TO OBTAIN COPIES OF PRIOR SURVEYS CONDUCTED ON OR IN THE VICINITY OF THE SUBJECT PROPERTY AND TO OBTAIN A COPY OF THE SUBJECT AND ADJOINING PROPERTY DEEDS. SURVEYS UTILIZED AS A PART OF THE RESOLUTION SHOWN HEREON ARE LISTED AS REFERENCES.

THE SUBJECT LINE AND CORNERS WERE MONUMENTED IN 1995 IN COUNTY SURVEY #95-090. THE EAST CORNER OF THE SUBJECT LINE WAS FOUND TO BE DESTROYED BY TIMBER HARVEST ACTIVITY. THE WEST CORNER WAS FOUND AS NOTED ON THE SURVEY. ADDITIONAL MONUMENTS WERE FOUND PER REFERENCE #1, ALSO AS SHOWN ON THE SURVEY. THE SOUTHEAST SECTION CORNER AND WEST CORNER OF THE SUBJECT LINE WERE HELD AS SHOWN TO ESTABLISH THE BASIS OF BEARING FOR THIS SURVEY. THE SECTIONAL BREAKDOWN AND PROPERTY BOUNDARY SHOWN HEREON ARE CALCULATED IDENTICALLY TO REFERENCE #1.

WITH RESOLUTION OF THE LOCATION OF THE SUBJECT LINE, IT WAS CLEARED, POSTED, AND BLAZED TO LONGVIEW TIMBER STANDARDS. ALSO, AS NOTED ON THE SURVEY, THE EAST CORNER OF THE SUBJECT LINE WAS REMONUMENTED AS SHOWN. NEW BEARING TREE LOCATIONS WERE ESTABLISHED AND CORNER CARDS WERE FILED SEPARATE FROM THIS SURVEY FOR EACH OF THE CORNER LOCATIONS.

THE SET MONUMENT IS A 5/8" X 30" REBAR WITH YELLOW PLASTIC CAP INSCRIBED "B BESEDA PLS 50800".

LEGEND :

- SET 5/8" X 30" REBAR WITH YELLOW PLASTIC CAP, "B BESEDA PLS 50800"
- FOUND MONUMENTS, AS NOTED.
- CALCULATED CORNERS, NOT SET.
- SET STEEL FENCE POST
- SET P.K. NAIL OR AS NOTED.
- SET BRASS SCREW AND WASHER, INSCRIBED "LS 50800"
- x- EXISTING FENCE LINE.

REGISTERED
PROFESSIONAL
LAND SURVEYOR

[Signature]
OREGON
JULY 13, 1999
BENJAMIN B. BESEDA
50800

EXPIRES: 12/31/2011

Date	No.	Revisions	By	App.
SURVEY FOR LONGVIEW TIMBER PORTION OF TAX LOT 01N-11E 1600 IN THE SOUTH 1/2 OF SECTION 17 TOWNSHIP 1 NORTH, RANGE 11 E., W.M. HOOD RIVER COUNTY, OREGON				
TENNESON ENGINEERING CORP. CONSULTING ENGINEERS 3313 W. 2ND. STREET, Suite 100 THE DALLES, OREGON 97058 PH. 541-296-9177 FAX 541-296-6657				
Survey	Calculation	Design	Date	Scale
B.R.H.	B.B.B.	<i>[Signature]</i>	12/8/2011	1"=300'
Drawn	DWG. No.	Work Order No.	Sheet	
S.D.H.	K:\ACAD\13700\13770svy.dwg	13770	1 of 1	