

NARRATIVE:

THE PURPOSE OF THIS SURVEY IS TO CREATE STAGE 4 OF "COLUMBIA CLIFF VILLAS, A CONDOMINIUM". STAGE 4 CONTAINS 6 LIVING UNITS.

SEE FACE OF PLAT FOR SPECIFIC DETAILS.

THE PROPERTY BOUNDARIES WERE HELD AS CREATED BY LS 59002 AN OREGON SURVEYOR. PARCELS 1 AND 2 ARE SHOWN ON HOOD RIVER COUNTY PARTITION PLAT NO. 2006-19P AS RECORDED ON JUNE 14, 2006.

NEW EASEMENTS NOTED:

NOTE: SPECIFIC DETAILS OF EASEMENTS ARE FOUND ON RECORD DECLARATION IN HOOD RIVER COUNTY RECORDS NO. 2011-03576 ARTICLE 7:

- 7.1-GENERAL EASEMENT
7.2-ENCROACHMENTS
7.5-EASEMENTS FOR DECLARANT
7.6-RESERVATION OF EASEMENTS FOR FUTURE DEVELOPMENT
7.7-INCORPORATION OF EASEMENTS IN PARTITION PLAT AND BY SEPARATE RECORDED EASEMENT AGREEMENT.

EASEMENTS NOTED:

SEE PAGE 8 FOR EASEMENT DETAILS

FOUND IRON ROD WITH CAP LS 59002. POINT WAS SET TO REFERENCE CORNER ON SOUTH R/W OF UNION PACIFIC RAILROAD

STAGE 2 OF COLUMBIA CLIFF VILLAS, A CONDOMINIUM AS RECORDED IN HOOD RIVER COUNTY RECORDERS OFFICE FILE #2008-01971 DATED MAY 21, 2008

STAGE 3 OF COLUMBIA CLIFF VILLAS, A CONDOMINIUM AS RECORDED IN HOOD RIVER COUNTY RECORDERS OFFICE FILE #2009-1555 DATED APRIL 21, 2009

EASEMENT #20065122, GENERALLY LOCATED IN THIS AREA. EASEMENT BASED ON FIELD LOCATED UNDERGROUND POWER LINE.

PARCEL 1 PARTITION PLAT 2006-19P

Table with 3 columns: LINE, BEARING, DISTANCE. Lists lines L1 through L9 with their respective bearings and distances.

DETECTED IRON AT THIS POSITION, BELIEVED TO BE PREVIOUSLY SET IRON ROD, POSITION FALLS IN SIDEWALK.

STAGE 1 OF COLUMBIA CLIFF VILLAS, A CONDOMINIUM AS RECORDED IN HOOD RIVER COUNTY RECORDERS OFFICE FILE #2008-0250 DATED JANUARY 24, 2008

Table with 6 columns: CURVE, RADIUS, ARC LENGTH, CHORD BEARING, CHORD LENGTH, DELTA ANGLE. Lists curves C1 through C4 with their geometric data.

TERRA SURVEYING

PLAT OF STAGE 4 COLUMBIA CLIFF VILLAS, A CONDOMINIUM Supplemental Plat No. 3: Annexation of Stage 4

A PORTION OF PARCEL 2 OF HOOD RIVER COUNTY PARTITION PLAT 2006-19P LOCATED IN THE SE 1/4 OF SECTION 27, TOWNSHIP 3 NORTH, RANGE 10 EAST, WILLAMETTE MERIDIAN, HOOD RIVER COUNTY, OREGON.

REGISTERED PROFESSIONAL LAND SURVEYOR

OREGON December 30, 2009 ERIK M. CARLSON 72306

Expires: December, 2011

REFERENCES:

- HOOD RIVER PARTITION PLAT NO. 2006-19P
HOOD RIVER COUNTY SURVEY #99084
HOOD RIVER COUNTY SURVEY #78093
HOOD RIVER COUNTY SURVEY #78088
HOOD RIVER COUNTY SURVEY #2008 004
HOOD RIVER COUNTY SURVEY #2008 040
HOOD RIVER COUNTY SURVEY #2009 018

NOTE: As per O.R.S. 92.120(3) I, Erik M. Carlson, certify this plat to be an exact copy of the original plat recorded in the county recorders office.

HOOD RIVER COUNTY SURVEYOR'S OFFICE

CS# 2011047

DATE FILED: 11-28-11

BY: [Signature]

LEGEND:

- SET 5/8" X 30" IRON ROD WITH PLASTIC CAP
FOUND CONCRETE NAIL IN ROCK
FOUND 5/8" IRON ROD OF RECORD, LS 72306, EXCEPT WHERE NOTED ON PLAT
SET SCREW WITH BRASS WASHER, LS 72306
CALCULATED, NOT FOUND OR SET
DEED OR PLAT CALL
GCE = GENERAL COMMON ELEMENT



SCALE: 1" = 20'

BASIS OF BEARING: HOOD RIVER COUNTY PARTITION PLAT 2006-19P

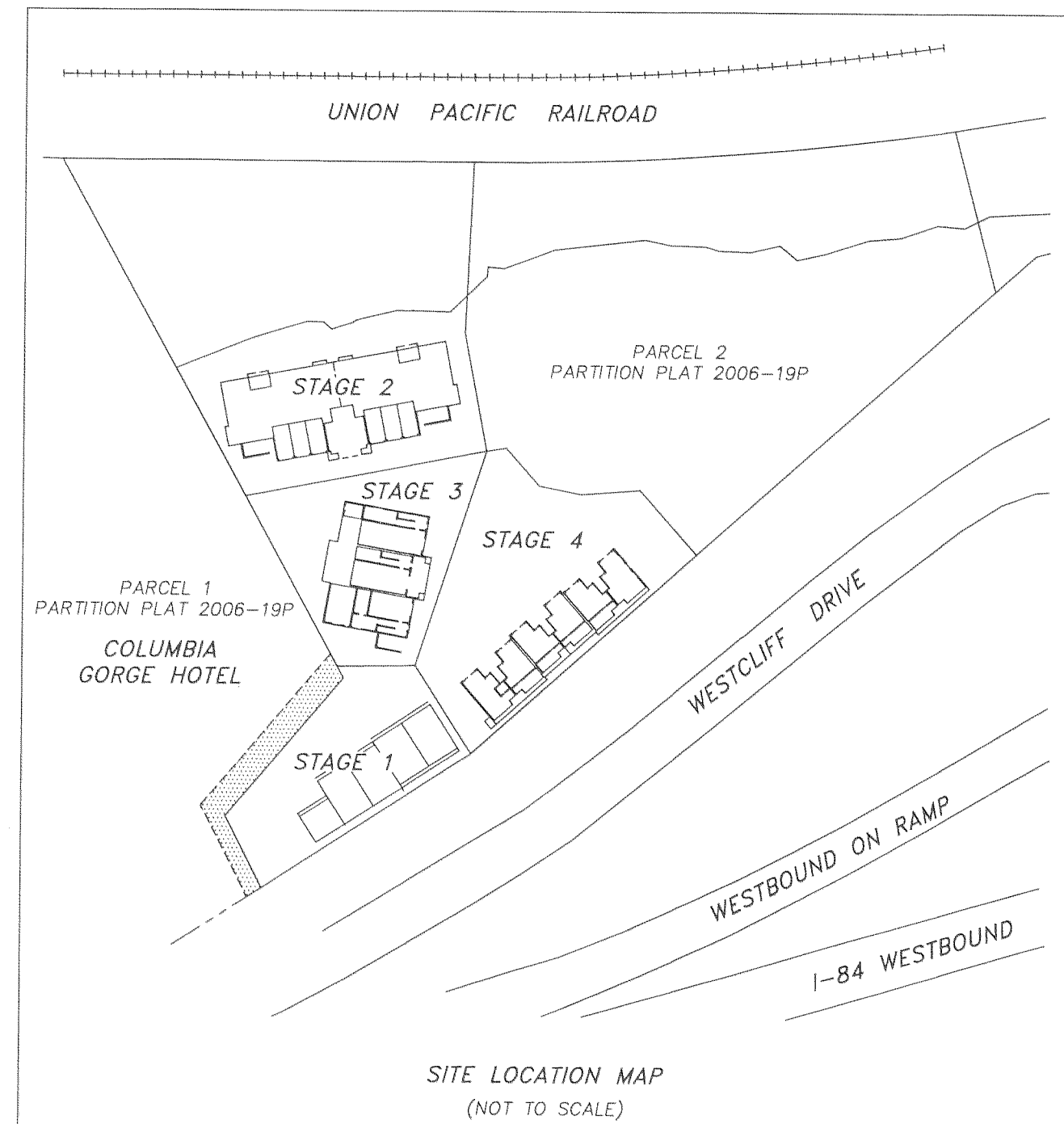
TERRA SURVEYING

DATE: OCTOBER 26, 2011
DATE OF MONUMENTATION: 10/26/2011
SCALE: 1" = 20'
PROJECT: 206025STG4
ASSESSORS MAP: 3N 10E 27D
P.O. BOX 617
HOOD RIVER, OREGON 97031
PHONE & FAX: (541) 386-4531
E-Mail: terra@gorge.net

Certified to be a true and correct copy of the ORIGINAL Dept. of Records & Assessment By [Signature] Deputy

SHEET INDEX:

- SHEET 1: PLAT BOUNDARY, VILLA UNIT LOCATIONS, NARRATIVE.
SHEET 2: FIRST FLOOR PLAN
SHEET 3: SECOND FLOOR PLAN
SHEET 4: DETAIL SECOND FLOOR UNITS 24 AND 25
SHEET 5: DETAIL SECOND FLOOR UNITS 26 AND 27
SHEET 6: DETAIL SECOND FLOOR UNITS 28 AND 29
SHEET 7: BUILDING SECTION PLAN
SHEET 8: SURVEYOR'S CERTIFICATE, DECLARATION AND ACKNOWLEDGMENT CERTIFICATE OF COMPLETION APPROVALS



PLAT OF STAGE 4  
 COLUMBIA CLIFF VILLAS, A CONDOMINIUM  
 Supplemental Plat No. 3: Annexation of Stage 4

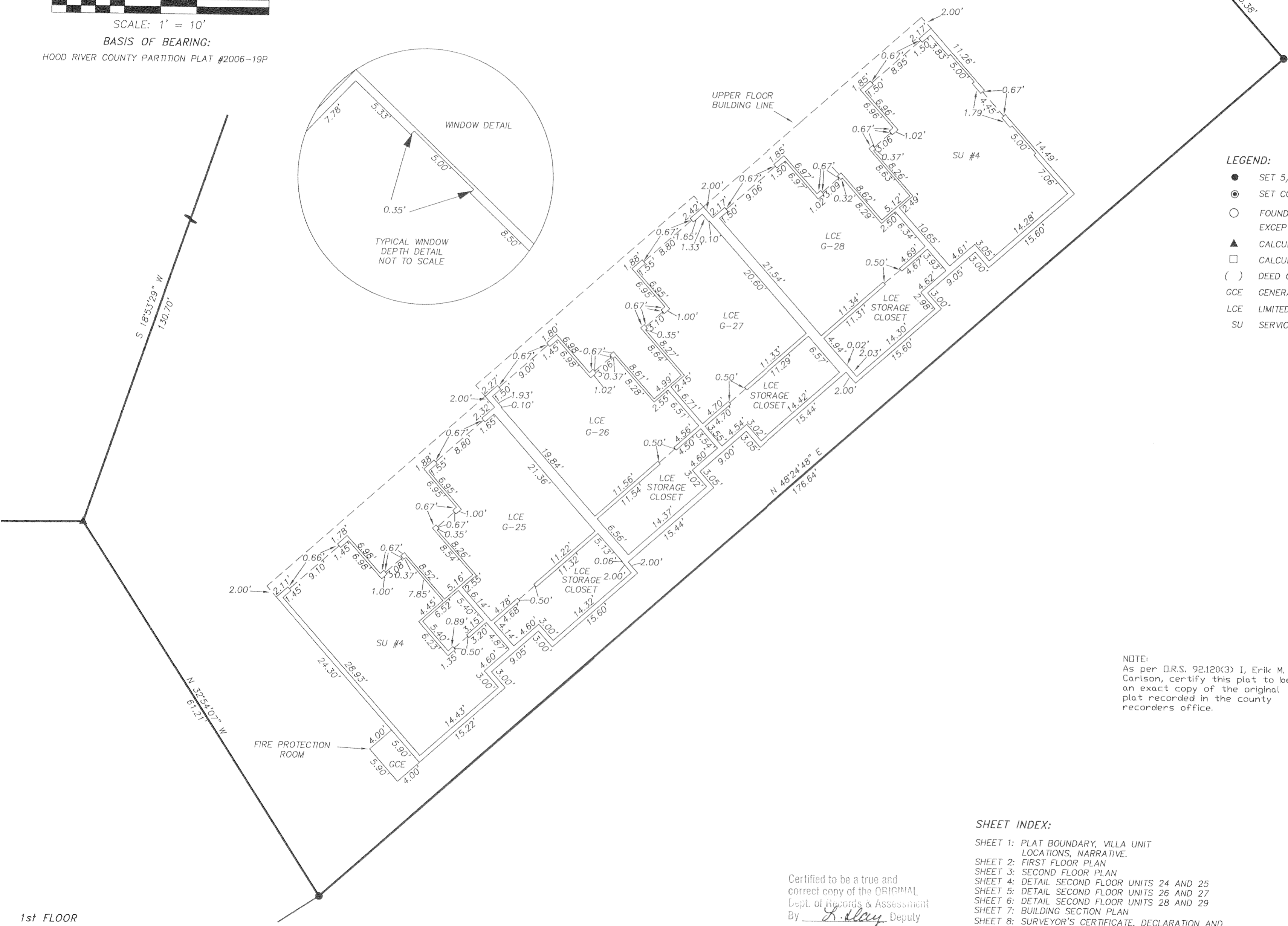
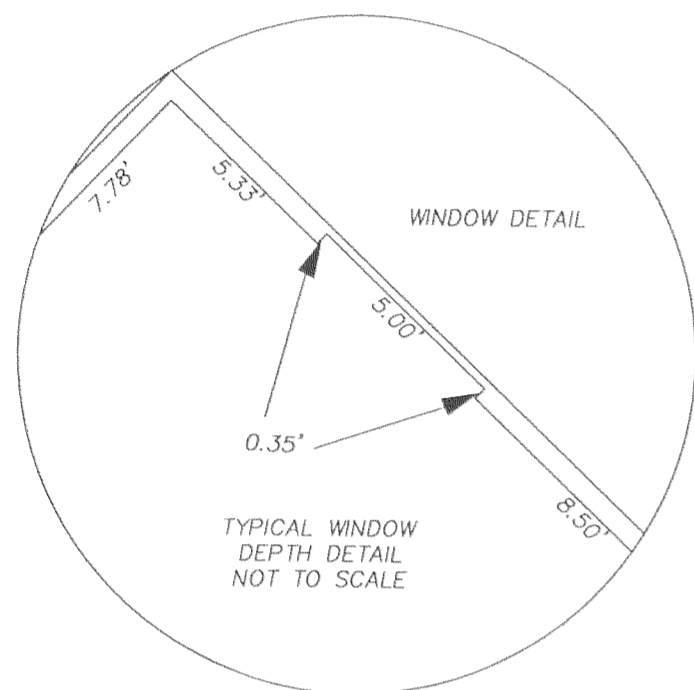
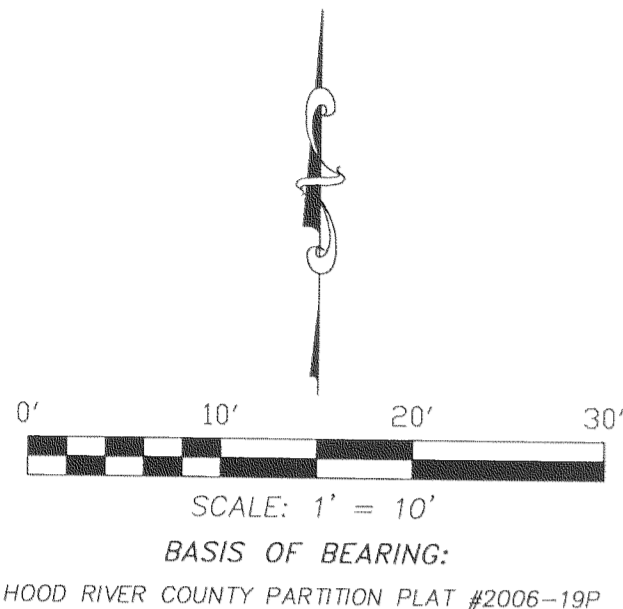
A PORTION OF PARCEL 2 OF HOOD RIVER COUNTY PARTITION PLAT 2006-19P  
 LOCATED IN THE SE 1/4 OF SECTION 27,  
 TOWNSHIP 3 NORTH, RANGE 10 EAST, WILLAMETTE MERIDIAN,  
 HOOD RIVER COUNTY, OREGON.

HOOD RIVER COUNTY  
 SURVEYOR'S OFFICE

CS# 2011 047

DATE FILED: 11-28-11

BY: *RF*



LEGEND:

- SET 5/8" X 30" IRON ROD WITH PLASTIC CAP
- ⊙ SET CONCRETE NAIL IN ROCK
- FOUND 5/8" IRON ROD OF RECORD, LS 72306, EXCEPT WHERE NOTED ON PLAT
- ▲ CALCULATED, NOT FOUND OR SET
- CALCULATED, NOT FOUND OR SET
- ( ) DEED OR PLAT CALL
- GCE GENERAL COMMON ELEMENT
- LCE LIMITED COMMON ELEMENT
- SU SERVICE UNIT

UNIT #	AREA
24	505 Sq. Ft. ±
25	505 Sq. Ft. ±
26	505 Sq. Ft. ±
27	500 Sq. Ft. ±
28	500 Sq. Ft. ±
29	505 Sq. Ft. ±
G25	462 Sq. Ft. ±
G26	460 Sq. Ft. ±
G27	464 Sq. Ft. ±
G28	464 Sq. Ft. ±
SU4	935 Sq. Ft. ±

NOTE:  
 As per O.R.S. 92.120(3) I, Erik M. Carlson, certify this plat to be an exact copy of the original plat recorded in the county recorders office.

REGISTERED  
 PROFESSIONAL  
 LAND SURVEYOR

*Erik M. Carlson*

OREGON  
 December 30, 2005  
 ERIK M. CARLSON  
 72306

Expires: December, 2011

TERRA SURVEYING

SHEET INDEX:

- SHEET 1: PLAT BOUNDARY, VILLA UNIT LOCATIONS, NARRATIVE.
- SHEET 2: FIRST FLOOR PLAN
- SHEET 3: SECOND FLOOR PLAN
- SHEET 4: DETAIL SECOND FLOOR UNITS 24 AND 25
- SHEET 5: DETAIL SECOND FLOOR UNITS 26 AND 27
- SHEET 6: DETAIL SECOND FLOOR UNITS 28 AND 29
- SHEET 7: BUILDING SECTION PLAN
- SHEET 8: SURVEYOR'S CERTIFICATE, DECLARATION AND ACKNOWLEDGMENT CERTIFICATE OF COMPLETION APPROVALS

DATE: OCTOBER 26, 2011  
 SCALE: 1" = 10'  
 PROJECT: 206025STG4  
 ASSESSORS MAP: 3N 10E 27D  
 P.O. BOX 617  
 HOOD RIVER, OREGON 97031  
 PHONE & FAX: (541) 386-4531  
 E-Mail: terra@gorge.net

Certified to be a true and correct copy of the ORIGINAL  
 Dept. of Records & Assessment  
 By *L. Day* Deputy

TERRA SURVEYING

PLAT OF STAGE 4  
**COLUMBIA CLIFF VILLAS, A CONDOMINIUM**  
 Supplemental Plat No. 3: Annexation of Stage 4

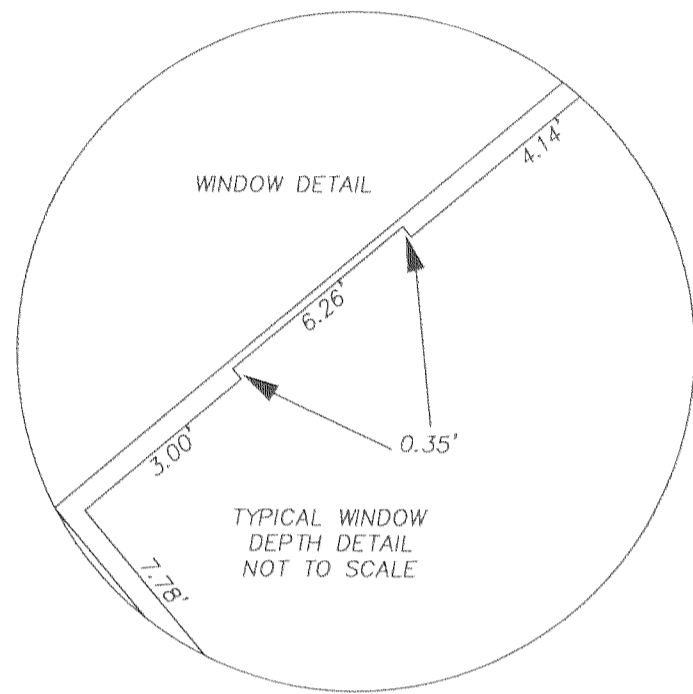
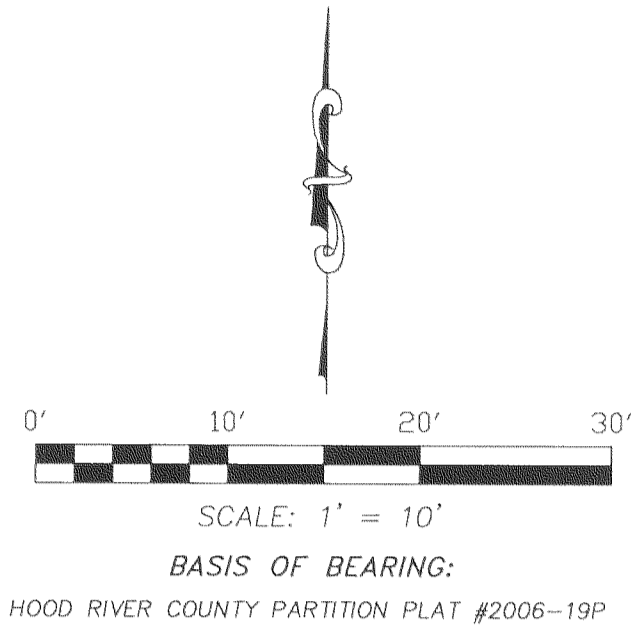
A PORTION OF PARCEL 2 OF HOOD RIVER COUNTY PARTITION PLAT 2006-19P  
 LOCATED IN THE SE 1/4 OF SECTION 27,  
 TOWNSHIP 3 NORTH, RANGE 10 EAST, WILLAMETTE MERIDIAN,  
 HOOD RIVER COUNTY, OREGON.

HOOD RIVER COUNTY  
 SURVEYOR'S OFFICE

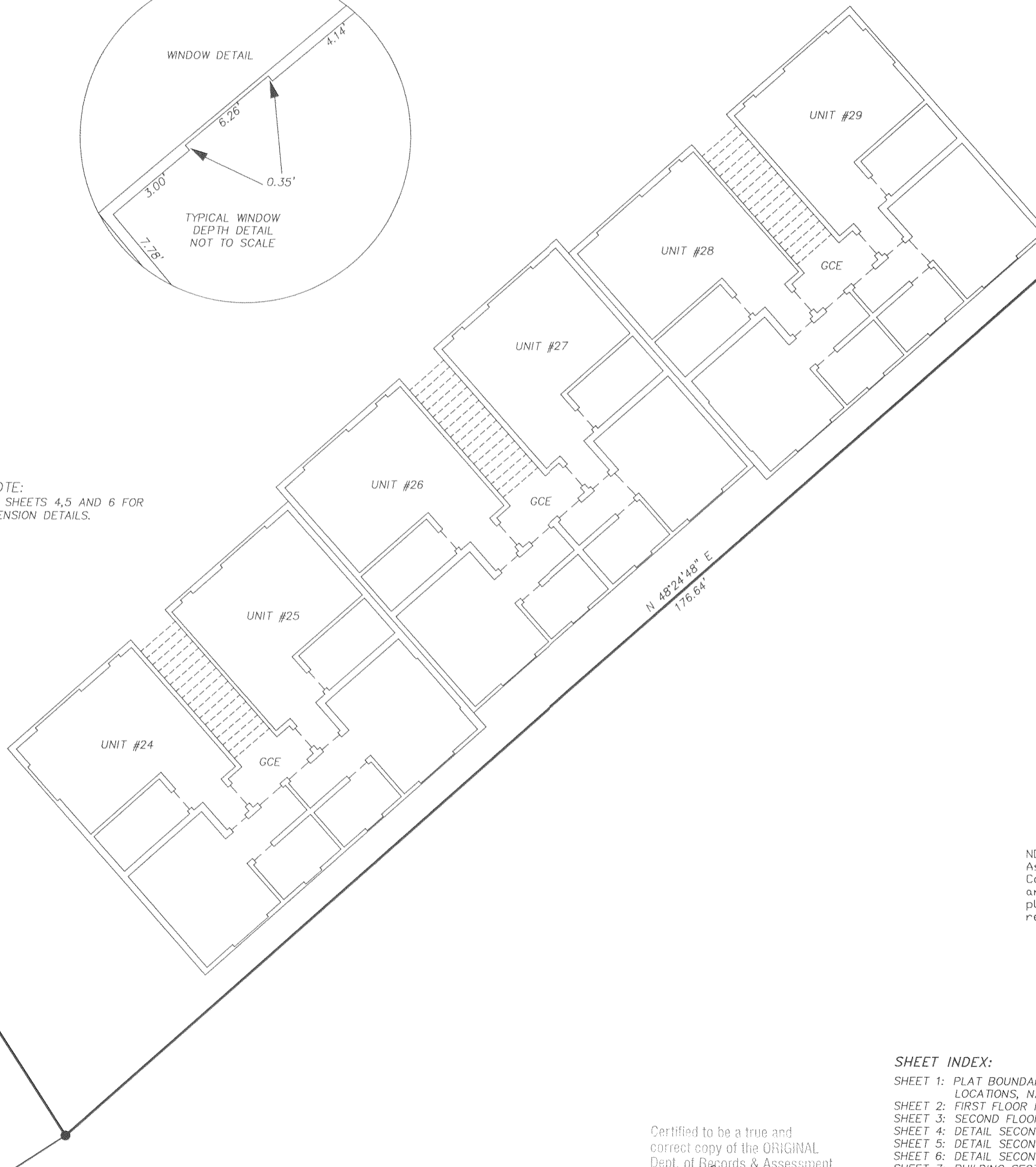
CS# 2011 047

DATE FILED: 11-28-11

BY: *RJ*



\*NOTE:  
 SEE SHEETS 4,5 AND 6 FOR  
 DIMENSION DETAILS.



LEGEND:

- SET 5/8" X 30" IRON ROD WITH PLASTIC CAP
- ⊙ SET CONCRETE NAIL IN ROCK
- FOUND 5/8" IRON ROD OF RECORD, LS 72306, EXCEPT WHERE NOTED ON PLAT
- ▲ CALCULATED, NOT FOUND OR SET
- CALCULATED, NOT FOUND OR SET
- ( ) DEED OR PLAT CALL
- GCE GENERAL COMMON ELEMENT
- LCE LIMITED COMMON ELEMENT
- SU SERVICE UNIT

UNIT #	AREA
24	505 Sq. Ft. ±
25	505 Sq. Ft. ±
26	505 Sq. Ft. ±
27	500 Sq. Ft. ±
28	500 Sq. Ft. ±
29	505 Sq. Ft. ±
G25	462 Sq. Ft. ±
G26	460 Sq. Ft. ±
G27	464 Sq. Ft. ±
G28	464 Sq. Ft. ±
SU4	935 Sq. Ft. ±

NOTE:  
 As per D.R.S. 92.120(3) I, Erik M. Carlson, certify this plat to be an exact copy of the original plat recorded in the county recorders office.

REGISTERED  
 PROFESSIONAL  
 LAND SURVEYOR

*Erik M. Carlson*  
 OREGON  
 December 30, 2005  
 ERIK M. CARLSON  
 72306

Expires: December, 2011

TERRA SURVEYING

SHEET INDEX:

- SHEET 1: PLAT BOUNDARY, VILLA UNIT LOCATIONS, NARRATIVE.
- SHEET 2: FIRST FLOOR PLAN
- SHEET 3: SECOND FLOOR PLAN
- SHEET 4: DETAIL SECOND FLOOR UNITS 24 AND 25
- SHEET 5: DETAIL SECOND FLOOR UNITS 26 AND 27
- SHEET 6: DETAIL SECOND FLOOR UNITS 28 AND 29
- SHEET 7: BUILDING SECTION PLAN
- SHEET 8: SURVEYOR'S CERTIFICATE, DECLARATION AND ACKNOWLEDGMENT CERTIFICATE OF COMPLETION APPROVALS

DATE: OCTOBER 26, 2011  
 SCALE: 1" = 10'  
 PROJECT: 206025STG4  
 ASSESSORS MAP: 3N 10E 27D  
 P.O. BOX 617  
 HOOD RIVER, OREGON 97031  
 PHONE & FAX: (541) 386-4531  
 E-Mail: terra@gorge.net

Certified to be a true and correct copy of the ORIGINAL  
 Dept. of Records & Assessment  
 By *R. Klay* Deputy

TERRA SURVEYING

PLAT OF STAGE 4  
COLUMBIA CLIFF VILLAS, A CONDOMINIUM  
Supplemental Plat No. 3: Annexation of Stage 4

A PORTION OF PARCEL 2 OF HOOD RIVER COUNTY PARTITION PLAT 2006-19P  
LOCATED IN THE SE 1/4 OF SECTION 27,  
TOWNSHIP 3 NORTH, RANGE 10 EAST, WILLAMETTE MERIDIAN,  
HOOD RIVER COUNTY, OREGON.

HOOD RIVER COUNTY  
SURVEYOR'S OFFICE

CS# 2011 047

DATE FILED: 11-28-11

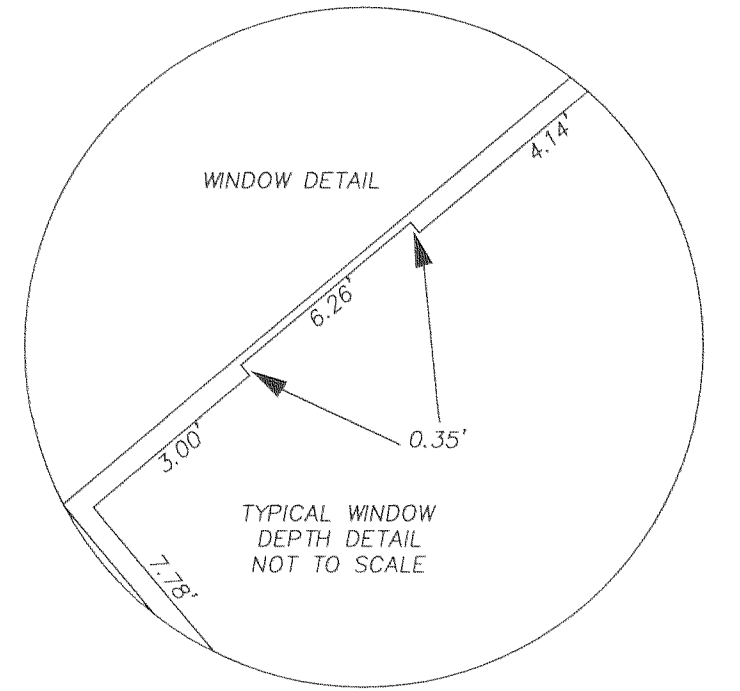
BY: *[Signature]*



SCALE: 1" = 10'

BASIS OF BEARING:

HOOD RIVER COUNTY PARTITION PLAT #2006-19P



SCALE: 1" = 5'

NOTE:  
As per O.R.S. 92.120(3) I, Erik M. Carlson, certify this plat to be an exact copy of the original plat recorded in the county recorders office.

Certified to be a true and correct copy of the ORIGINAL  
Dept. of Records & Assessment  
By *[Signature]* Deputy

2nd FLOOR  
SHEET 4 OF 8

SHEET INDEX:

- SHEET 1: PLAT BOUNDARY, VILLA UNIT LOCATIONS, NARRATIVE.
- SHEET 2: FIRST FLOOR PLAN
- SHEET 3: SECOND FLOOR PLAN
- SHEET 4: DETAIL SECOND FLOOR UNITS 24 AND 25
- SHEET 5: DETAIL SECOND FLOOR UNITS 26 AND 27
- SHEET 6: DETAIL SECOND FLOOR UNITS 28 AND 29
- SHEET 7: BUILDING SECTION PLAN
- SHEET 8: SURVEYOR'S CERTIFICATE, DECLARATION AND ACKNOWLEDGMENT CERTIFICATE OF COMPLETION APPROVALS

REGISTERED  
PROFESSIONAL  
LAND SURVEYOR

*[Signature]*

OREGON  
December 30, 2005  
ERIK M. CARLSON  
72306

Expires: December, 2011

TERRA SURVEYING

DATE: OCTOBER 26, 2011  
SCALE: 1" = 10'  
PROJECT: 206025STG4  
ASSESSORS MAP: 3N 10E 27D  
P.O. BOX 617  
HOOD RIVER, OREGON 97031  
PHONE & FAX: (541) 386-4531  
E-Mail: terra@gorge.net

CS 2011 047.4

TERRA SURVEYING

PLAT OF STAGE 4  
COLUMBIA CLIFF VILLAS, A CONDOMINIUM  
Supplemental Plat No. 3: Annexation of Stage 4

A PORTION OF PARCEL 2 OF HOOD RIVER COUNTY PARTITION PLAT 2006-19P  
LOCATED IN THE SE 1/4 OF SECTION 27,  
TOWNSHIP 3 NORTH, RANGE 10 EAST, WILLAMETTE MERIDIAN,  
HOOD RIVER COUNTY, OREGON.

HOOD RIVER COUNTY  
SURVEYOR'S OFFICE

CS# 2011 047

DATE FILED: 11-28-11

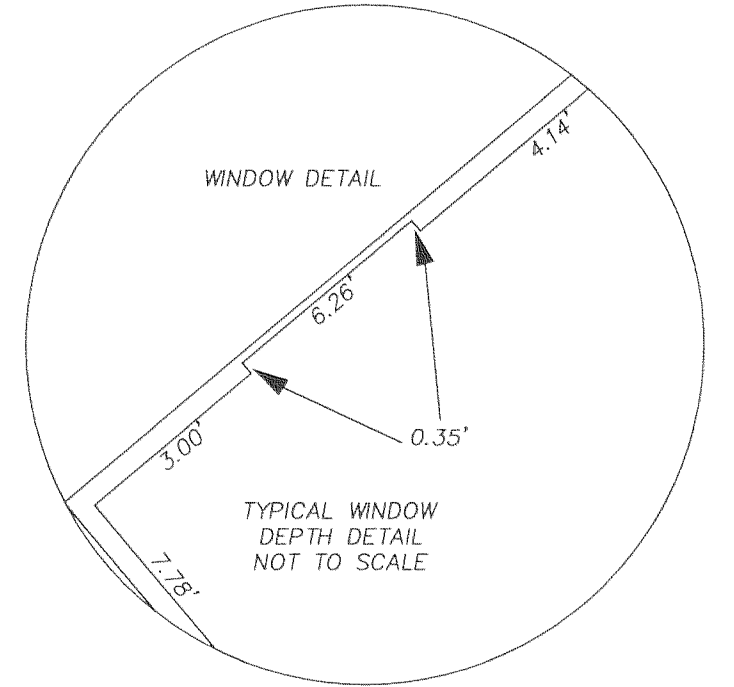
BY: RJ



SCALE: 1' = 10'

BASIS OF BEARING:

HOOD RIVER COUNTY PARTITION PLAT #2006-19P



NOTE:  
As per O.R.S. 92.120(3) I, Erik M. Carlson, certify this plat to be an exact copy of the original plat recorded in the county recorders office.

Certified to be a true and correct copy of the ORIGINAL Plat of Records & Assessment by R. Hlay Deputy

2nd FLOOR  
SHEET 5 OF 8

SHEET INDEX:

- SHEET 1: PLAT BOUNDARY, VILLA UNIT LOCATIONS, NARRATIVE.
- SHEET 2: FIRST FLOOR PLAN
- SHEET 3: SECOND FLOOR PLAN
- SHEET 4: DETAIL SECOND FLOOR UNITS 24 AND 25
- SHEET 5: DETAIL SECOND FLOOR UNITS 26 AND 27
- SHEET 6: DETAIL SECOND FLOOR UNITS 28 AND 29
- SHEET 7: BUILDING SECTION PLAN
- SHEET 8: SURVEYOR'S CERTIFICATE, DECLARATION AND ACKNOWLEDGMENT CERTIFICATE OF COMPLETION APPROVALS

REGISTERED  
PROFESSIONAL  
LAND SURVEYOR

*Erik M. Carlson*

OREGON  
December 30, 2005  
ERIK M. CARLSON  
72306

Expires: December, 2011

TERRA SURVEYING

DATE: OCTOBER 26, 2011

SCALE: 1" = 10'

PROJECT: 206025STG4

ASSESSORS MAP: 3N 10E 27D

P.O. BOX 617

HOOD RIVER, OREGON 97031

PHONE & FAX: (541) 386-4531

E-Mail: terra@gorge.net

CS 2011 047-5

TERRA SURVEYING

PLAT OF STAGE 4  
COLUMBIA CLIFF VILLAS, A CONDOMINIUM  
Supplemental Plat No. 3: Annexation of Stage 4

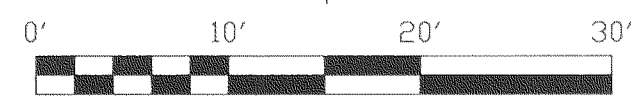
A PORTION OF PARCEL 2 OF HOOD RIVER COUNTY PARTITION PLAT 2006-19P  
LOCATED IN THE SE 1/4 OF SECTION 27,  
TOWNSHIP 3 NORTH, RANGE 10 EAST, WILLAMETTE MERIDIAN,  
HOOD RIVER COUNTY, OREGON.

HOOD RIVER COUNTY  
SURVEYOR'S OFFICE

CS# 2011 047

DATE FILED: 11.28-11

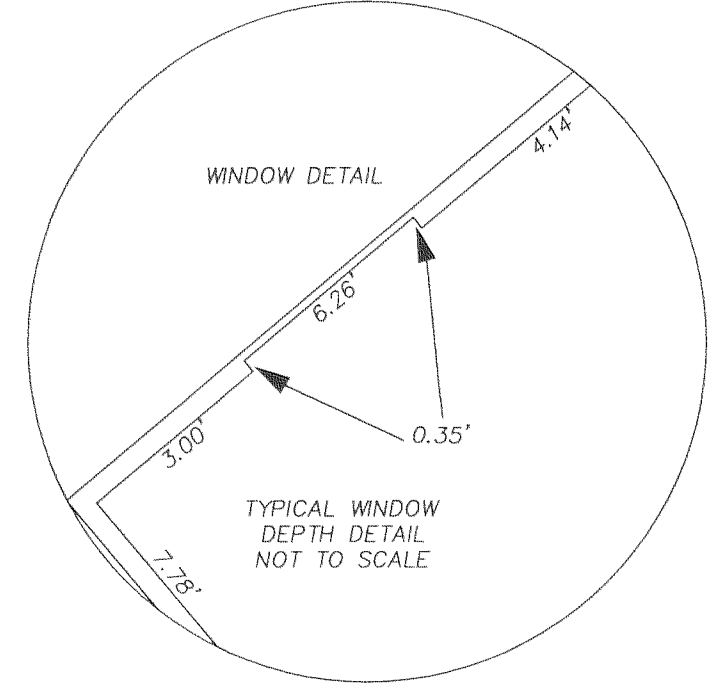
BY: *[Signature]*



SCALE: 1" = 10'

BASIS OF BEARING:

HOOD RIVER COUNTY PARTITION PLAT #2006-19P



NOTE:  
As per O.R.S. 92.120(3) I, Erik M. Carlson, certify this plat to be an exact copy of the original plat recorded in the county recorders office.

REGISTERED  
PROFESSIONAL  
LAND SURVEYOR

*Erik M. Carlson*

OREGON  
December 30, 2005  
ERIK M. CARLSON  
72306

Expires: December, 2011

Certified to be a true and correct copy of the ORIGINAL  
Dept. of Records & Assessment  
By E. Clay Deputy

SCALE: 1" = 5'

SHEET INDEX:

- SHEET 1: PLAT BOUNDARY, VILLA UNIT LOCATIONS, NARRATIVE.
- SHEET 2: FIRST FLOOR PLAN
- SHEET 3: SECOND FLOOR PLAN
- SHEET 4: DETAIL SECOND FLOOR UNITS 24 AND 25
- SHEET 5: DETAIL SECOND FLOOR UNITS 26 AND 27
- SHEET 6: DETAIL SECOND FLOOR UNITS 28 AND 29
- SHEET 7: BUILDING SECTION PLAN
- SHEET 8: SURVEYOR'S CERTIFICATE, DECLARATION AND ACKNOWLEDGMENT CERTIFICATE OF COMPLETION APPROVALS

TERRA SURVEYING

DATE: OCTOBER 26, 2011  
SCALE: 1" = 10'  
PROJECT: 206025STG4  
ASSESSORS MAP: 3N 10E 27D  
P.O. BOX 617  
HOOD RIVER, OREGON 97031  
PHONE & FAX: (541) 386-4531  
E-Mail: terra@gorge.net

PLAT OF STAGE 4  
COLUMBIA CLIFF VILLAS, A CONDOMINIUM  
Supplemental Plat No. 3: Annexation of Stage 4

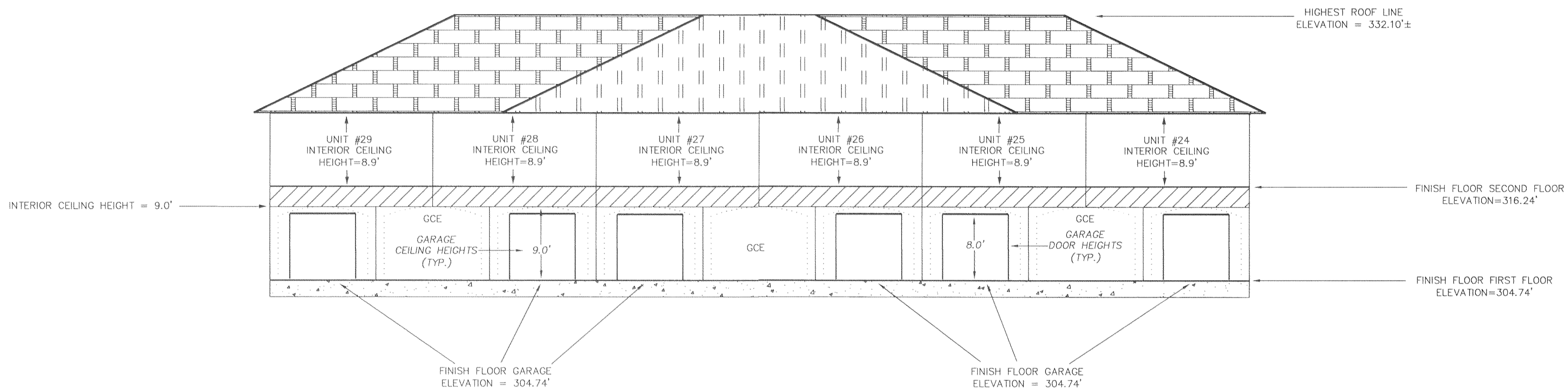
A PORTION OF PARCEL 2 OF HOOD RIVER COUNTY PARTITION PLAT 2006-19P  
LOCATED IN THE SE 1/4 OF SECTION 27,  
TOWNSHIP 3 NORTH, RANGE 10 EAST, WILLAMETTE MERIDIAN,  
HOOD RIVER COUNTY, OREGON.

HOOD RIVER COUNTY  
SURVEYOR'S OFFICE  
CS# 2011047  
DATE FILED: 11-28-11  
BY: [Signature]

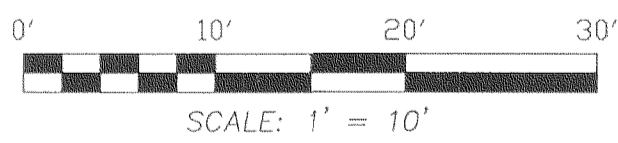
LEGEND:  
GCE GENERAL COMMON ELEMENT  
TYP TYPICAL MEASUREMENT

VERTICAL DATUM:  
U.S.G.S. STATION PONDER-2  
N.A.D. 1983 (1998 ADJUSTMENT)  
LATITUDE = 45°42'39.37105" (N)  
LONGITUDE = 121°32'59.76083" (W)  
ORTHOMETRIC HEIGHT OF 102.638 METERS  
(336.74')  
N.A.V.D. 1988 USING THE 1999 GEOID FOR  
THE U.S.

REGISTERED  
PROFESSIONAL  
LAND SURVEYOR  
[Signature]  
OREGON  
December 30, 2005  
ERIK M. CARLSON  
72306  
Expires: December, 2011



ELEVATED VIEW: LOOKING SOUTH



NOTE:  
As per O.R.S. 92.120(3) I, Erik M. Carlson,  
certify this plat to be an exact copy  
of the original plat recorded in the  
county recorders office.

TERRA SURVEYING

SHEET INDEX:  
SHEET 1: PLAT BOUNDARY, VILLA UNIT  
LOCATIONS, NARRATIVE.  
SHEET 2: FIRST FLOOR PLAN  
SHEET 3: SECOND FLOOR PLAN  
SHEET 4: DETAIL SECOND FLOOR UNITS 24 AND 25  
SHEET 5: DETAIL SECOND FLOOR UNITS 26 AND 27  
SHEET 6: DETAIL SECOND FLOOR UNITS 28 AND 29  
SHEET 7: BUILDING SECTION PLAN  
SHEET 8: SURVEYOR'S CERTIFICATE, DECLARATION AND  
ACKNOWLEDGMENT CERTIFICATE OF COMPLETION  
APPROVALS

DATE: OCTOBER 26, 2011  
SCALE: 1" = 10'  
PROJECT: 206025STG4  
ASSESSOR'S MAP: 3N 10E 27D  
P.O. BOX 617  
HOOD RIVER, OREGON 97031  
PHONE & FAX: (541) 386-4531  
E-Mail: terra@gorge.net

certified to be a true and  
correct copy of the ORIGINAL  
of Records & Assessment  
[Signature] Deputy

