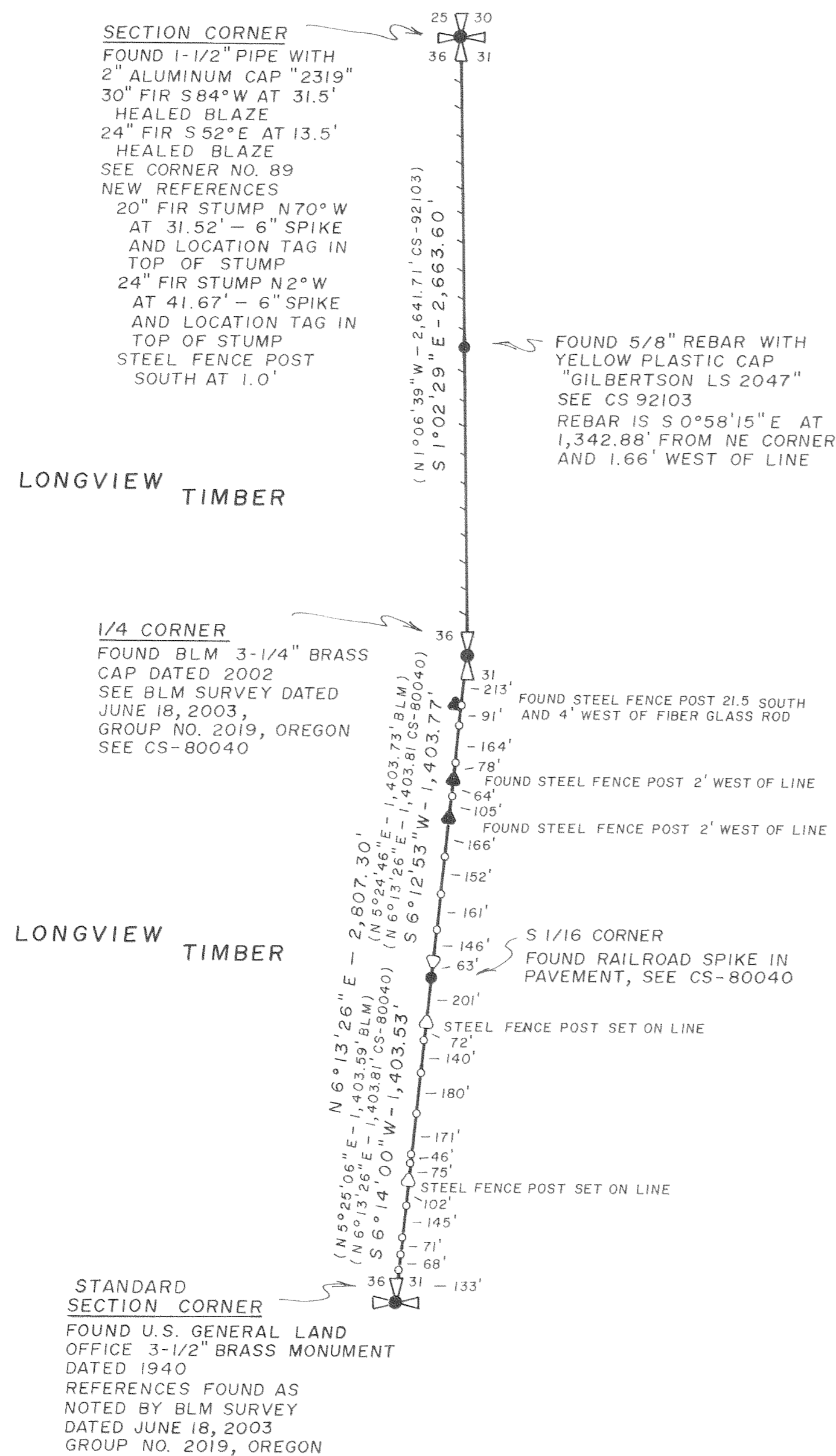


RECORD OF SURVEY
FOR
LONGVIEW TIMBER
IN THE NE 1/4 AND IN THE SE 1/4 OF
SECTION 36, T1N, R9E, W.M.
HOOD RIVER COUNTY, OREGON

LINES MARKED
AUGUST 30 & 31, 2011



LEGEND

- SECTION CORNER, 1/4 CORNER
FOUND AS NOTED
- MONUMENT FOUND AS NOTED
- STEEL FENCE POST FOUND AS NOTED
- 1/2"x6' FIBER GLASS ROD SET ON LINE
- STEEL FENCE POST SET ON LINE
- RECORD BEARING AND/OR DISTANCE
- LINE MARKED WITH 1/2"x6' FIBER GLASS RODS
SET ON LINE, BLUE AND PINK FLAGGING
BETWEEN RODS, TREES ALONG LINE PAINTED
WITH BLUE PAINT.

NOTE: REFERENCES HAVE YELLOW LOCATION TAG
AND 6" INCH SPIKE IN TOP OF STUMP
BEARING TO REFERENCE TAKEN WITH HAND
COMPASS, DISTANCES MEASURED TO SPIKE.

NARRATIVE

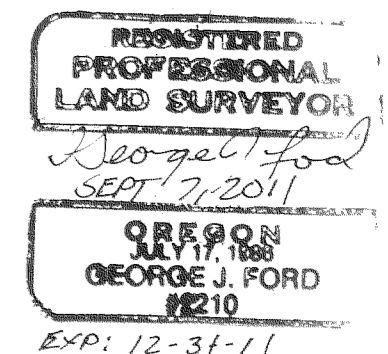
THE PURPOSE OF THIS SURVEY WAS TO LOCATE THE
EAST PROPERTY BOUNDARY OF LONGVIEW TIMBER
DESCRIBED IN DEED NUMBER 2007-02460
PARCEL 43: THE EAST HALF OF SECTION 36

THE NORTHEAST SECTION CORNER, EAST 1/4 CORNER,
SOUTH 1/16 CORNER AND SOUTHEAST SECTION CORNER
WERE FOUND AS NOTED AND HELD TO ESTABLISH LINE
THE NORTH 1/16 CORNER SET IN CS-92103 WAS NOT
ACCEPTED IN THIS SURVEY.

A TRAVERSE WAS RUN FROM THE NORTHEAST CORNER TO
EAST 1/4 CORNER, TO THE SOUTHEAST CORNER. THE
PROPERTY LINES WERE THEN RUN, TRAVERSE LOOPS
CLOSED AND ADJUSTED. SURVEY WAS DONE WITH A
TOPCON GTS-2.

THIS MAP CORRECTLY REPRESENTS A SURVEY MADE BY
ME OR UNDER MY DIRECTION AT THE REQUEST OF
LONGVIEW TIMBER CORP. IN JUNE 2011.

GEORGE J. FORD, PLS
CERTIFICATE NO. 2210



PO BOX 353
KLICKITAT, WA 98628
(509) 369-1014