

RECORD OF SURVEY FOR DOUG ROVIANEK
 LOCATED IN THE SE 1/4 OF THE SW 1/4 OF SECTION 35, TOWNSHIP 3 NORTH, RANGE 10 EAST W.M.,
 HOOD RIVER COUNTY, OREGON.
 TAX LOT 103, 03N-10E-35CD.

HOOD RIVER COUNTY
 SURVEYOR'S OFFICE

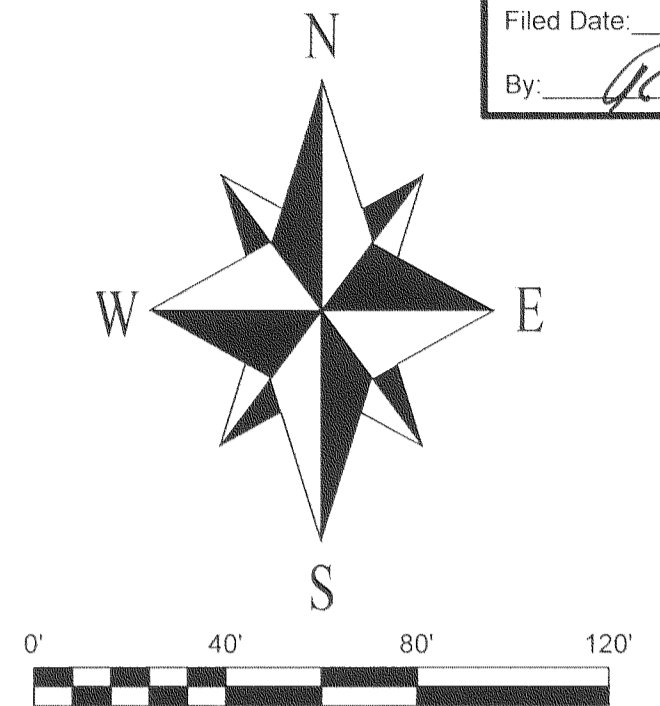
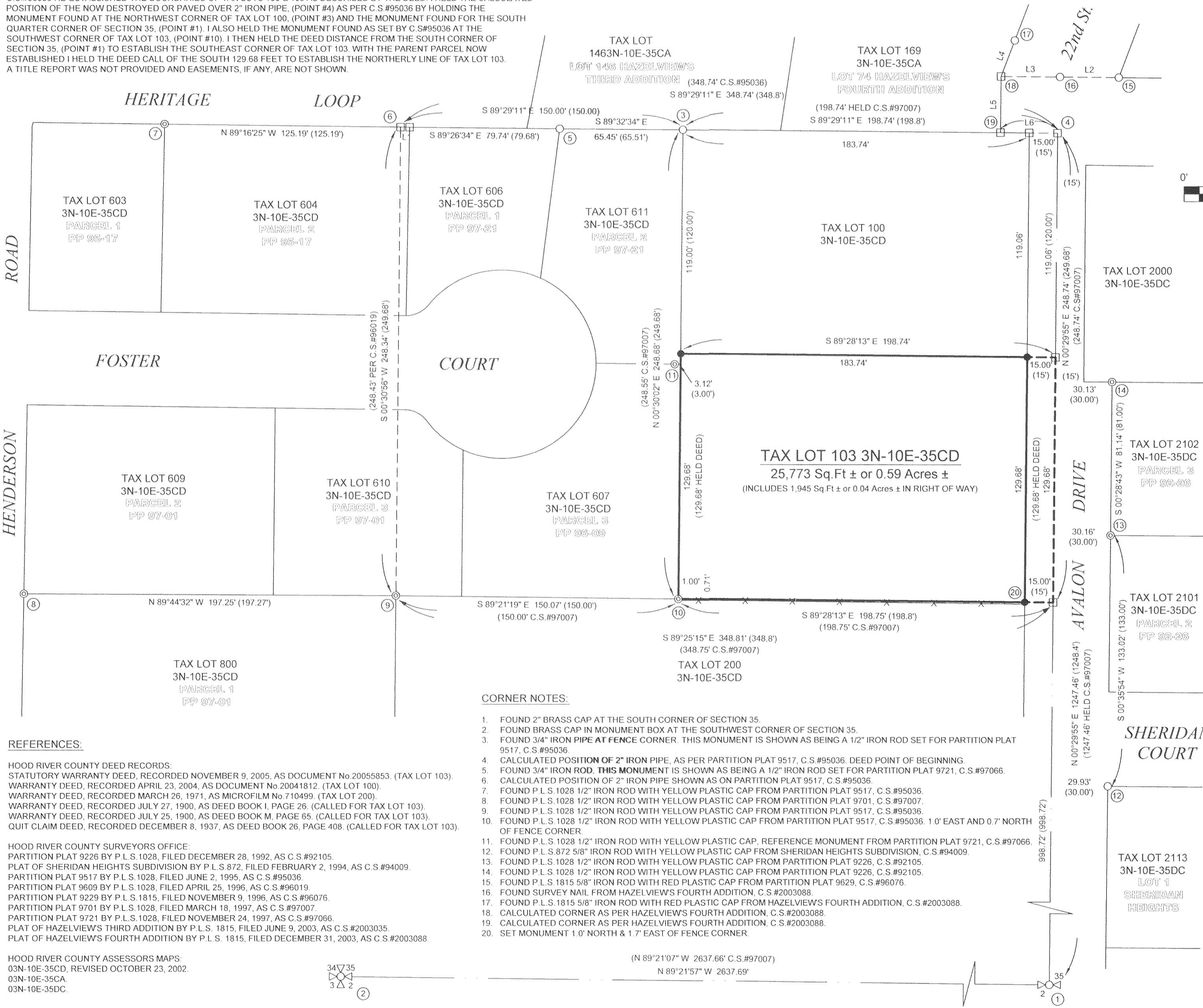
Survey No. CS 2011 035

Filed Date: 9-28-11

By: [Signature]

NARRATIVE:

THE PURPOSE OF THIS SURVEY IS TO VERIFY AND MONUMENT THE PROPERTY BOUNDARY OF TAX LOT 103 AS DESCRIBED BY STATUTORY WARRANTY DEED DOCUMENT No 20055853. P.L.S. 1028 PERFORMED FOUR PARTITION SURVEYS TO THE WEST OF TAX LOT 103. THE FIRST OF THESE PARTITIONS, 9517, C.S.#95036 RE-ESTABLISHED THE BOUNDARIES OF TAX LOTS 100 & 103 AS DESCRIBED BY THE DEED. I HELD THE CALCULATED POSITION OF THE NOW DESTROYED OR PAVED OVER 2" IRON PIPE, (POINT #4) AS PER C.S.#95036 BY HOLDING THE MONUMENT FOUND AT THE NORTHWEST CORNER OF TAX LOT 100, (POINT #3) AND THE MONUMENT FOUND FOR THE SOUTH QUARTER CORNER OF SECTION 35, (POINT #1). I ALSO HELD THE MONUMENT FOUND AS SET BY C.S.#95036 AT THE SOUTHWEST CORNER OF TAX LOT 103, (POINT #10). I THEN HELD THE DEED DISTANCE FROM THE SOUTH CORNER OF SECTION 35, (POINT #1) TO ESTABLISH THE SOUTHEAST CORNER OF TAX LOT 103. WITH THE PARENT PARCEL NOW ESTABLISHED I HELD THE DEED CALL OF THE SOUTH 129.68 FEET TO ESTABLISH THE NORTHERLY LINE OF TAX LOT 103. A TITLE REPORT WAS NOT PROVIDED AND EASEMENTS, IF ANY, ARE NOT SHOWN.



BASIS OF BEARINGS:
 N.A.D. 83 (CORS96) (EPOCH 2002) OREGON STATE PLANE, NORTH ZONE, GRID BEARINGS.
 THE RELATIONSHIP BETWEEN THE BEARINGS OF THIS SURVEY AND THE MONUMENTS FOUND FROM C.S.#95036 AT THE SOUTH AND SOUTHWEST CORNER OF SECTION 35 ARE ALSO SHOWN.

LINE TABLE:

LINE	BEARING	DISTANCE
L1	S 89°26'34" E	4.81' (4.81')
L2	S 89°24'14" E	31.17' (31.17')
L3	S 89°30'25" E	31.17' (31.17')
L4	N 20°47'26" E	20.36' (20.36')
L5	N 00°27'32" E	29.69' (30.00')
L6	N 89°29'11" W	30.19' (30.41')

- SYMBOL LEGEND:**
- SET 5/8" BY 30" IRON ROD WITH ORANGE PLASTIC CAP STAMPED "CROSS PLS 60051"
 - FOUND MONUMENT OF RECORD AS NOTED
 - ⊙ FOUND P.L.S. 1028 1/2" IRON ROD WITH YELLOW PLASTIC CAP
 - CALCULATED CORNER - NOT FOUND OR SET
 - (50.00') DEED DISTANCE OR PREVIOUS SURVEY DISTANCE AS NOTED
 - — — FENCE

CORNER NOTES:

- FOUND 2" BRASS CAP AT THE SOUTH CORNER OF SECTION 35.
- FOUND BRASS CAP IN MONUMENT BOX AT THE SOUTHWEST CORNER OF SECTION 35.
- FOUND 3/4" IRON PIPE AT FENCE CORNER. THIS MONUMENT IS SHOWN AS BEING A 1/2" IRON ROD SET FOR PARTITION PLAT 9517, C.S.#95036.
- CALCULATED POSITION OF 2" IRON PIPE, AS PER PARTITION PLAT 9517, C.S.#95036. DEED POINT OF BEGINNING.
- FOUND 3/4" IRON ROD. THIS MONUMENT IS SHOWN AS BEING A 1/2" IRON ROD SET FOR PARTITION PLAT 9721, C.S.#97066.
- CALCULATED POSITION OF 2" IRON PIPE SHOWN AS ON PARTITION PLAT 9517, C.S.#95036.
- FOUND P.L.S. 1028 1/2" IRON ROD WITH YELLOW PLASTIC CAP FROM PARTITION PLAT 9517, C.S.#95036.
- FOUND P.L.S. 1028 1/2" IRON ROD WITH YELLOW PLASTIC CAP FROM PARTITION PLAT 9701, C.S.#97007.
- FOUND P.L.S. 1028 1/2" IRON ROD WITH YELLOW PLASTIC CAP FROM PARTITION PLAT 9517, C.S.#95036.
- FOUND P.L.S. 1028 1/2" IRON ROD WITH YELLOW PLASTIC CAP FROM PARTITION PLAT 9517, C.S.#95036.
- FOUND P.L.S. 1028 1/2" IRON ROD WITH YELLOW PLASTIC CAP FROM PARTITION PLAT 9517, C.S.#95036. 1.0' EAST AND 0.7' NORTH OF FENCE CORNER.
- FOUND P.L.S. 1028 1/2" IRON ROD WITH YELLOW PLASTIC CAP, REFERENCE MONUMENT FROM PARTITION PLAT 9721, C.S.#97066.
- FOUND P.L.S. 872 5/8" IRON ROD WITH YELLOW PLASTIC CAP FROM SHERIDAN HEIGHTS SUBDIVISION, C.S.#94009.
- FOUND P.L.S. 1028 1/2" IRON ROD WITH YELLOW PLASTIC CAP FROM PARTITION PLAT 9226, C.S.#92105.
- FOUND P.L.S. 1028 1/2" IRON ROD WITH YELLOW PLASTIC CAP FROM PARTITION PLAT 9226, C.S.#92105.
- FOUND P.L.S. 1815 5/8" IRON ROD WITH RED PLASTIC CAP FROM PARTITION PLAT 9629, C.S.#96076.
- FOUND SURVEY NAIL FROM HAZELVIEW'S FOURTH ADDITION, C.S.#2003088.
- FOUND P.L.S. 1815 5/8" IRON ROD WITH RED PLASTIC CAP FROM HAZELVIEW'S FOURTH ADDITION, C.S.#2003088.
- CALCULATED CORNER AS PER HAZELVIEW'S FOURTH ADDITION, C.S.#2003088.
- CALCULATED CORNER AS PER HAZELVIEW'S FOURTH ADDITION, C.S.#2003088.
- SET MONUMENT 1.0' NORTH & 1.7' EAST OF FENCE CORNER.

REFERENCES:

- HOOD RIVER COUNTY DEED RECORDS:
 STATUTORY WARRANTY DEED, RECORDED NOVEMBER 9, 2005, AS DOCUMENT No 20055853. (TAX LOT 103).
 WARRANTY DEED, RECORDED APRIL 23, 2004, AS DOCUMENT No 20041812. (TAX LOT 100).
 WARRANTY DEED, RECORDED MARCH 26, 1971, AS MICROFILM No. 710499. (TAX LOT 200).
 WARRANTY DEED, RECORDED JULY 27, 1900, AS DEED BOOK I, PAGE 26. (CALLED FOR TAX LOT 103).
 WARRANTY DEED, RECORDED JULY 25, 1900, AS DEED BOOK M, PAGE 65. (CALLED FOR TAX LOT 103).
 QUIT CLAIM DEED, RECORDED DECEMBER 8, 1937, AS DEED BOOK 26, PAGE 408. (CALLED FOR TAX LOT 103).
- HOOD RIVER COUNTY SURVEYORS OFFICE:
 PARTITION PLAT 9226 BY P.L.S. 1028, FILED DECEMBER 28, 1992, AS C.S.#92105.
 PLAT OF SHERIDAN HEIGHTS SUBDIVISION BY P.L.S. 872, FILED FEBRUARY 2, 1994, AS C.S.#94009.
 PARTITION PLAT 9517 BY P.L.S. 1028, FILED JUNE 2, 1995, AS C.S.#95036.
 PARTITION PLAT 9609 BY P.L.S. 1028, FILED APRIL 25, 1996, AS C.S.#96019.
 PARTITION PLAT 9229 BY P.L.S. 1815, FILED NOVEMBER 9, 1996, AS C.S.#96076.
 PARTITION PLAT 9701 BY P.L.S. 1028, FILED MARCH 18, 1997, AS C.S.#97007.
 PARTITION PLAT 9721 BY P.L.S. 1028, FILED NOVEMBER 24, 1997, AS C.S.#97066.
 PLAT OF HAZELVIEW'S THIRD ADDITION BY P.L.S. 1815, FILED JUNE 9, 2003, AS C.S.#2003035.
 PLAT OF HAZELVIEW'S FOURTH ADDITION BY P.L.S. 1815, FILED DECEMBER 31, 2003, AS C.S.#2003088.
- HOOD RIVER COUNTY ASSESSORS MAPS:
 03N-10E-35CD, REVISED OCTOBER 23, 2002.
 03N-10E-35CA
 03N-10E-35DC.

REGISTERED
 PROFESSIONAL
 LAND SURVEYOR

[Signature]
 OREGON
 JANUARY 15, 2002
 BRADLEY J. CROSS
 60051
 RENEWAL DATE: 12/31/2011

PROJECT NUMBER: 2011016.
 DATE OF DRAWING: SEPTEMBER 6, 2011.
 DATE OF MONUMENTATION: JUNE 30, 2011.
 HOOD RIVER COUNTY ASSESSORS MAP: 03N-10E-35CD.

**COLUMBIA RIVER
 SURVEYING
 & MAPPING**

1767 12th St, #191
 HOOD RIVER, OREGON, 97031
 PHONE: 541-386-9002
 EMAIL: INFO@COLUMBIASURVEYING.COM

RECEIVED SEP 21 2011

CS 2011 035